

06 EASY HOLD SYSTEM

ROUND	74 - 78
ROUND INSTALLATION	79
SQUARE	80
SQUARE INSTALLATION	81

06 EASY HOLD SYSTEM



RUBBER MALLET TO BE USED



PRODUCT TO BE GLUED WITH E4054



ASSEMBLY WITH ALLEN KEY



PRODUCT TO BE WELDED



ANTI-CLIMB PRODUCT



SUPER STRONG, HIGH RESISTANT PRODUCT



Ease of installation is a focus of Easy Hold in a system also characterised by its technical and aesthetic qualities. In addition to being simpler to install, Easy Hold is more cost effective than many other systems on the market with a lighter lower support which still provides the required structural integrity to meet the all important safety criteria.



06 EASY HOLD SYSTEM

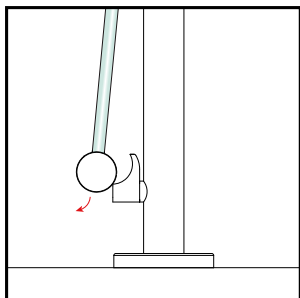
EASY HOLD - ROUND

Functionality and elegance with the new EASY HOLD system

Our EASY HOLD system has been improved to make installation even easier, with special care given to technical and aesthetic details.

New EASY HOLD - ROUND system surpasses itself and the competition. In four different ways.

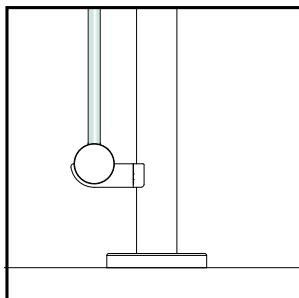
OTHERS



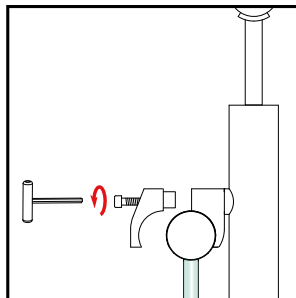
SAFER

It holds the tube during the installation, with no risk of falling.

EASY HOLD - ROUND



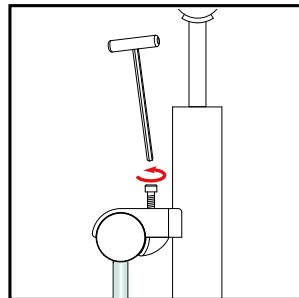
OTHERS



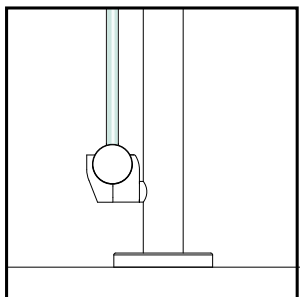
EASIER

Fixing from the top makes installation easier, even from the opposite side of the handrail.

EASY HOLD - ROUND



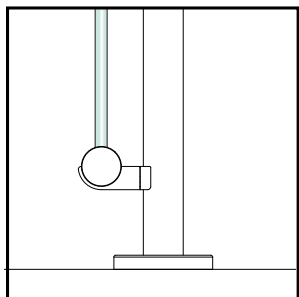
OTHERS



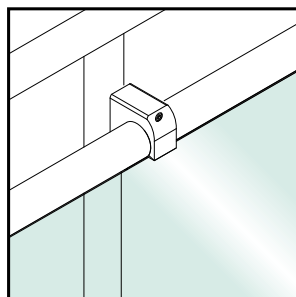
CHEAPER

Thanks to in-depth research and making a structural change, we have been able to make the lower support lighter, thereby reducing the cost of the whole system.

EASY HOLD - ROUND



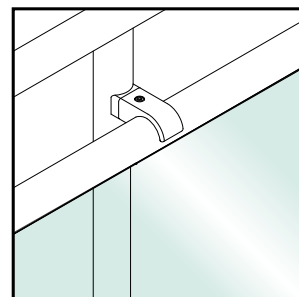
OTHERS



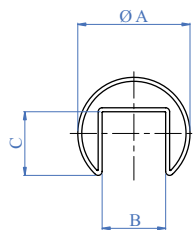
SMART

Lighter and less bulky design.

EASY HOLD - ROUND



EASY HOLD - ROUND



AISI304	AISI316	TUBE A	B	C
Satin Finish				
E1000424	E1100424	Ø 42.4 x 1.5 x 6000mm	24mm	24mm

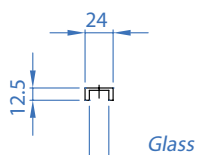
RUBBER GASKETS



Also available in lengths of 6 metres

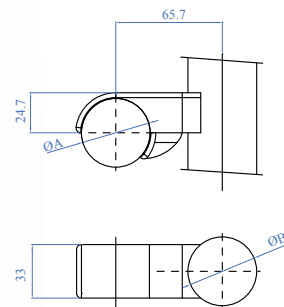
RUBBER	FOR TUBE	GLASS	COIL LENGTH
E1999100	Ø 42.4mm	8 - 10.76mm	3000mm
E1999200	Ø 42.4mm	12 - 16.76mm	3000mm
E1999300	Ø 42.4mm	16.76 - 18mm	3000mm

'SPEEDYRAIL' ABS GASKETS

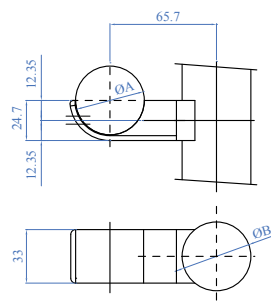


ABS	GLASS	KIT
E1991000	12.76mm	10 pieces
E1991010	16.76mm	10 pieces
E1991020	17.52mm	10 pieces
E1991030	21.52mm	10 pieces

USE E1000424 AND E1100424 WITH THE NEW GASKET **SPEEDYRAIL** FIXING SYSTEM, SEE PAGES 40 - 41



AISI304	AISI316	TUBE A	ANCHORAGE SURFACE B
E2500100	E4500100	Ø 42.4mm	Ø 42.4mm
E2500200	E4500200	Ø 42.4mm	Ø 48.3mm
E2500300	E4500300	Ø 42.4mm	Flat face



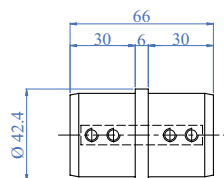
AISI304	AISI316	FOR TUBE	ANCHORAGE SURFACE B
E2500110	E4500110	Ø 42.4mm	Ø 42.4mm
E2500210	E4500210	Ø 42.4mm	Ø 48.3mm
E2500310	E4500310	Ø 42.4mm	Flat face



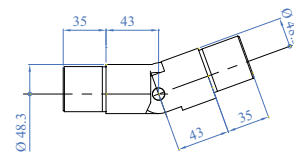
NO NEED TO SMOOTH THE GLASS ON THE EDGES INSERTED INTO THE FIXING TUBE AND NO NEED TO DRILL THE GLASS



EASY HOLD - ROUND



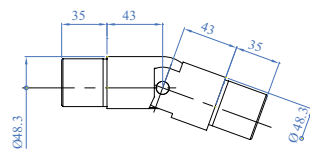
Upward pivotable connector, 25-55°



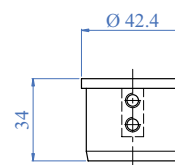
AISI304	AISI316	FOR TUBE
E1200200	E1200100	Ø 42.4 x 1.5mm

AISI316	FOR TUBE
E1510100	Ø 42.4 x 1.5mm

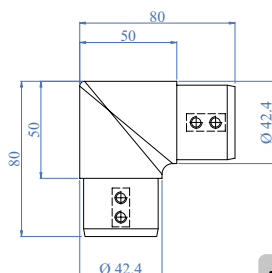
Downward pivotable connector, 25-55°



AISI316	FOR TUBE
E1520100	Ø 42.4 x 1.5mm

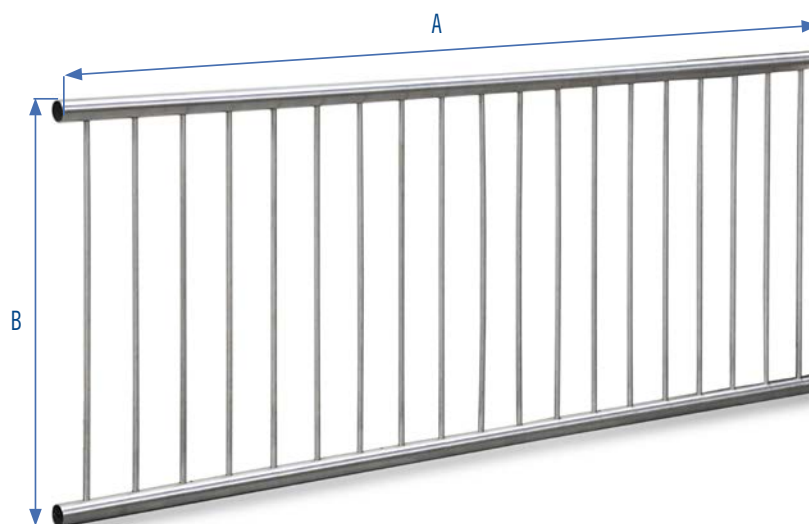
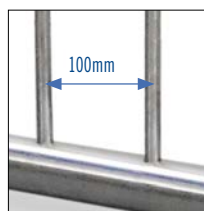
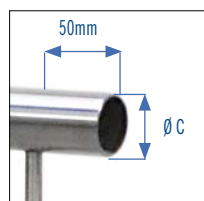


AISI304	AISI316	FOR TUBE
E1100200	E1100100	Ø 42.4 x 1.5mm

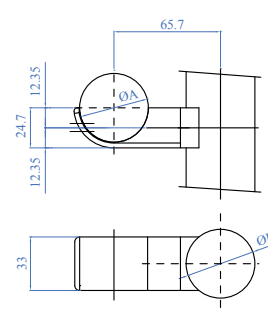
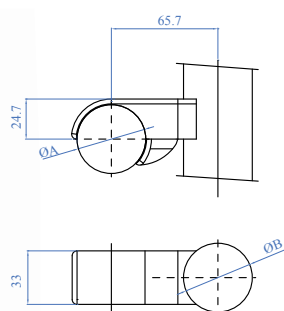


AISI304	AISI316	FOR TUBE
E1400200	E1400100	Ø 42.4 x 1.5mm

EASY HOLD - ROUND



AISI304	AISI316	DIMENSIONS A x B	Ø C
E1900300	E1900310	2000 x 900mm	42.4mm
E1900400	-	3000 x 900mm	42.4mm
-	E1900510	2000 x 1100mm	42.4mm



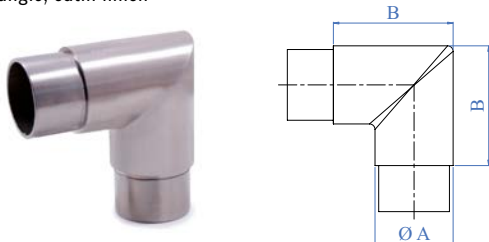
AISI304	AISI316	TUBE A	ANCHORAGE SURFACE B
E2500100	E4500100	Ø 42.4mm	Ø 42.4mm
E2500200	E4500200	Ø 42.4mm	Ø 48.3mm
E2500300	E4500300	Ø 42.4mm	Flat face

AISI304	AISI316	FOR TUBE	ANCHORAGE SURFACE B
E2500110	E4500110	Ø 42.4mm	Ø 42.4mm
E2500210	E4500210	Ø 42.4mm	Ø 48.3mm
E2500310	E4500310	Ø 42.4mm	Flat face



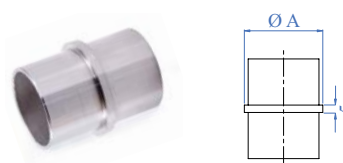
EASY HOLD - ROUND

90° angle, satin finish



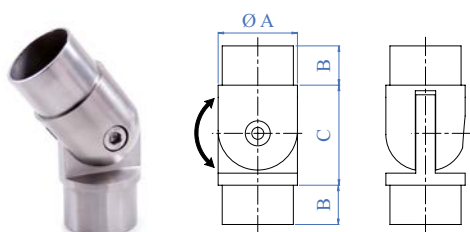
AISI304	AISI316	FOR TUBE A	B
E451/304	E451	Ø 42.4 x 2.0mm	65mm

Connector, satin finish



AISI304	AISI316	FOR TUBE A
E455/304	E455	Ø 42.4 x 2.0mm
	E455/26	Ø 42.4 x 2.0mm

Pivotal connector, satin finish



AISI304	AISI316	FOR TUBE A	B	C
E446/304	E446	Ø 42.4 x 2.0mm	22mm	53mm

Satin finish, with knurling



AISI316	FOR TUBE A
E4100	Ø 42.4 x 2.0mm



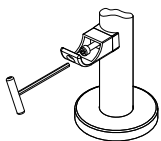
FOR THE POSTS FOR THE EASY HOLD ROUND SYSTEM GO TO PAGE 122



EASY HOLD - ROUND INSTALLATION

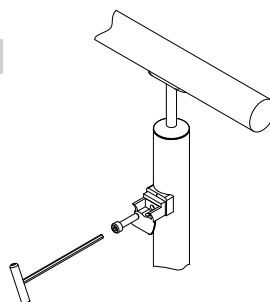
INSTALLATION OF THE EASY HOLD - ROUND ELEMENTS

1



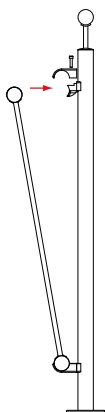
Fix the back of E2500100 at the correct distance from E2500110 using the appropriate allen key

2



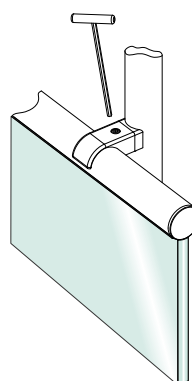
Fix E2500110 on the lower part of the post to the required height

3



Lean the panel on previously fixed E2500110 and let the upper part touch the back of E2500100

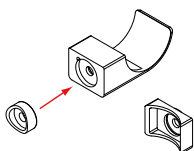
4



With an allen key fix the upper part of E2500100 to complete the assembly

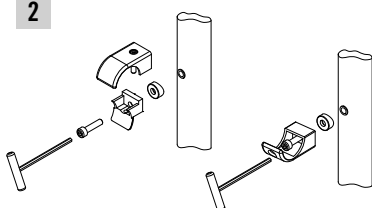
INSTALLATION OF THE EASY HOLD - ROUND ELEMENTS ON AN INCLINED SURFACE

1



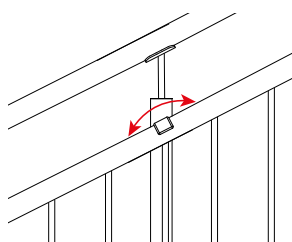
Substitute the rectangular back with the cylindrical one

2



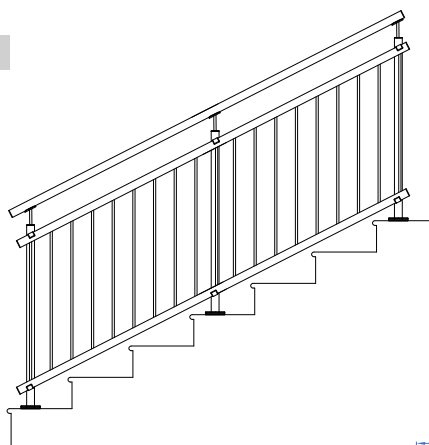
Anchor either to the post or to the surface - whichever is preferred

3

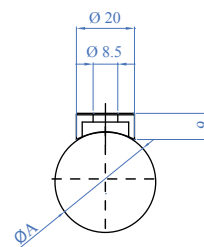


Fix as required

4



Your staircase is easily created

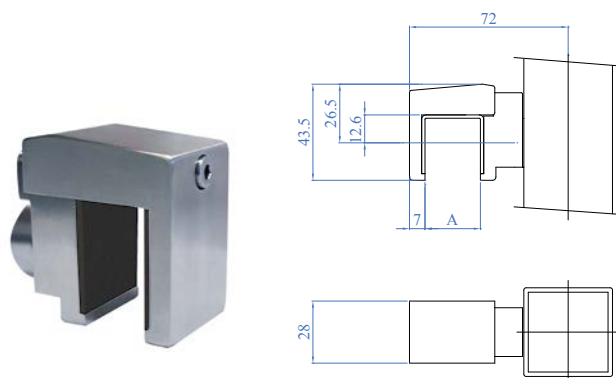


Applications to adaptor on inclined surfaces

AISI304	AISI316	FOR TUBE A
E2500400	E2500410	Ø 42.4mm
E2500500	-	Ø 48.3mm

EASY HOLD - SQUARE

Easy Hold Square system is a more modern style. It has precise lines and sharp edges which give each railing a special elegance.



AISI304	AISI316	ANCHORAGE SURFACE	A
E3500100	E3500110	Flat face	From 12.76 to 25mm
E3500200	E3500210	Ø 42.4mm	From 12.76 to 25mm

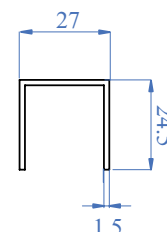


RUBBER GASKETS

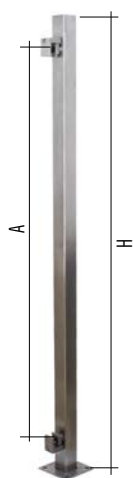


Also available in groups of 6 metres

RUBBER	FOR TUBE	GLASS	COIL LENGTH
E1999100	Ø 42.4mm	8 - 10.76mm	30m
E1999200	Ø 42.4mm	12 - 16.76mm	30m
E1999300	Ø 42.4mm	16.76 - 18mm	30m

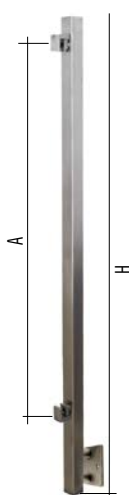


AISI316	PROFILE	LENGTH
E1100000	27 x 24.5 x 1.5mm	3000mm



E02050

Complete with welded flange



E1120/304

Complete with welded flange

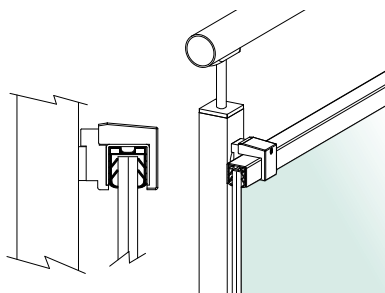
AISI304	AISI316	DIMENSIONS	A	H
EQ32100	EQ32110	40 x 40mm	900mm	1000mm

AISI304	AISI316	DIMENSIONS	A	H
EQ35100	EQ35110	40 x 40mm	900mm	1200mm

EASY HOLD - SQUARE INSTALLATION

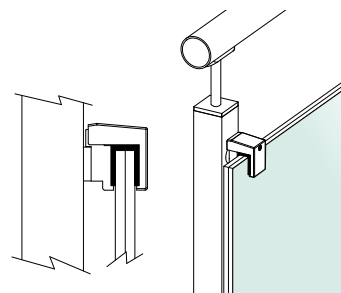
EASY HOLD SQUARE - 3 installation solutions

1



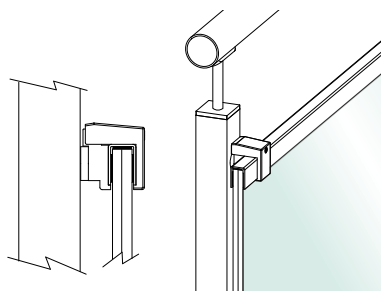
It is to be used in conjunction with E1100000 of the Cube System and with the rubber gaskets supplied.

2



It can be used to anchor the glass directly. By using special rubber gaskets, it is possible to fix glass thicknesses from 10.76 to 21.52mm.

3



It can also be combined with other profiles, simply by using the appropriate rubber gaskets and adjusting the fixing.

