

09 ROUND BAR HOLDERS

ROUND BARS

106

ROUND BAR HOLDERS

107 - 109

09 ROUND BAR HOLDERS



RUBBER MALLET TO BE USED



PRODUCT TO BE GLUED WITH E4054



ASSEMBLY WITH ALLEN KEY



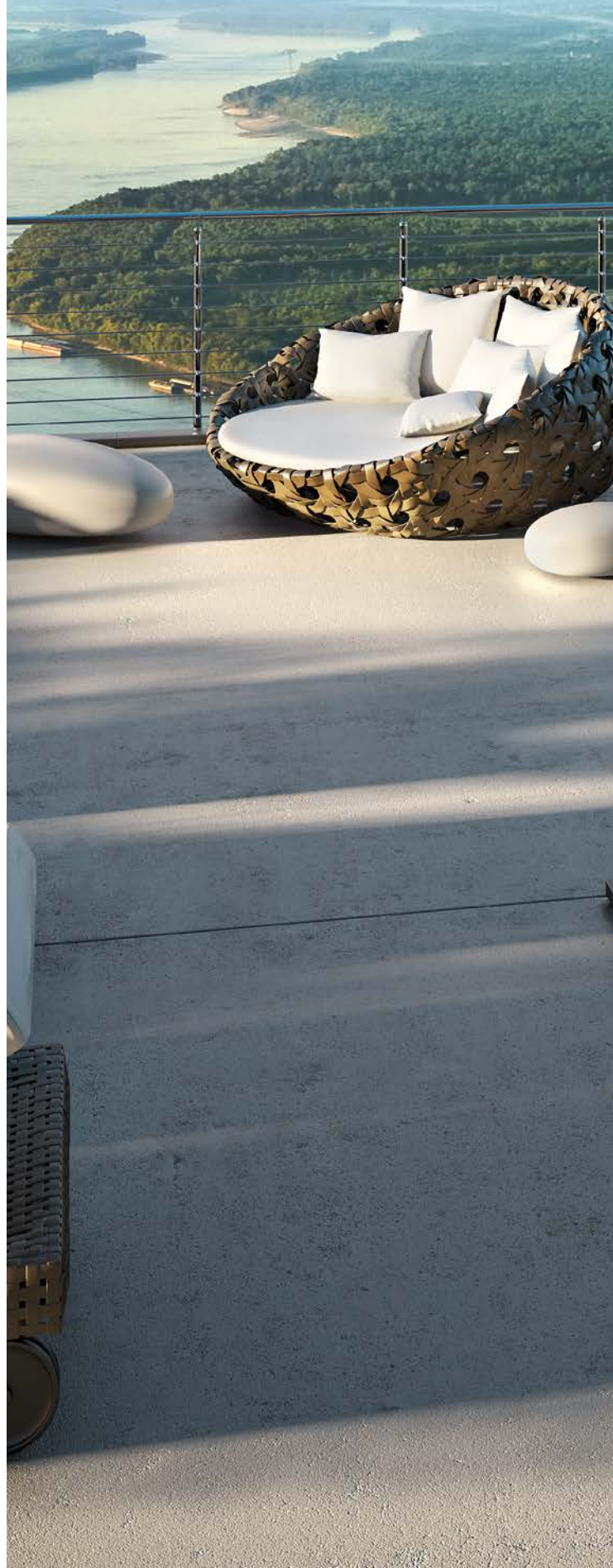
PRODUCT TO BE WELDED



ANTI-CLIMB PRODUCT



SUPER STRONG, HIGH RESISTANT PRODUCT



Designed to meet different architectural designs is a comprehensive range of modern, elegant bar holders and angle bar holders for both internal and external corners. The holders suit numerous bar diameters and are available in different finishes and designs.



ROUND BAR HOLDERS - ROUND BARS



Stainless steel, Brushed



In cold galvanized iron, Brushed

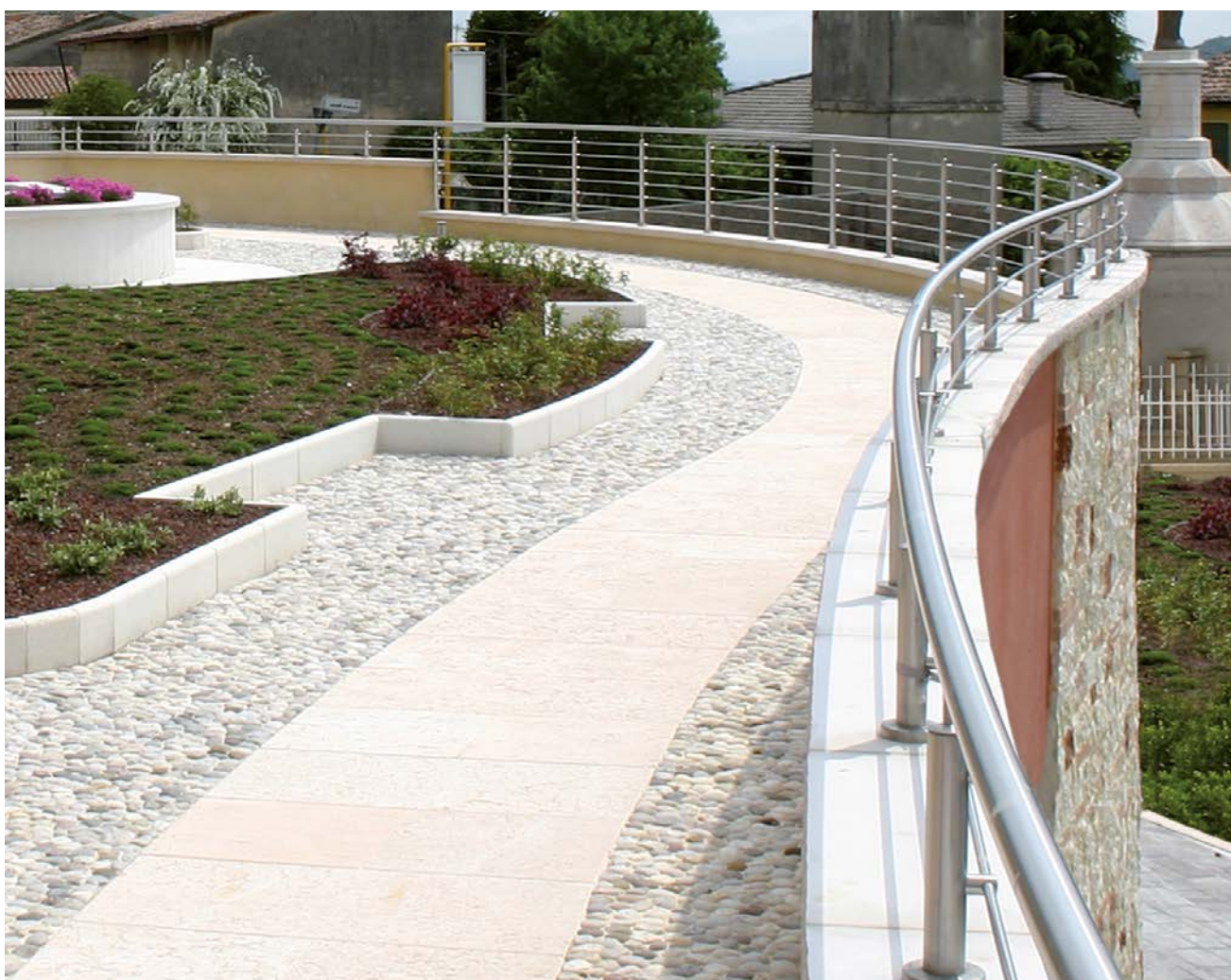
AISI304	AISI316	DIMENSIONS	LENGTH	WEIGHT
E0052/6000		Ø 8mm	6000mm	2.38kg
E0051	E4850	Ø 10mm	3000mm	1.85kg
E0051/6000	E4850/6000	Ø 10mm	6000mm	3.70kg
E005	E4851	Ø 12mm	3000mm	2.66kg
E005/6000	E4851/6000	Ø 12mm	6000mm	5.32kg
E0050		Ø 14mm	3000mm	3.62kg
E0050/6000		Ø 14mm	6000mm	7.24kg

IRON ZINC	DIMENSIONS	LENGTH	WEIGHT
I005/6000	Ø 12mm	6000mm	5.32kg

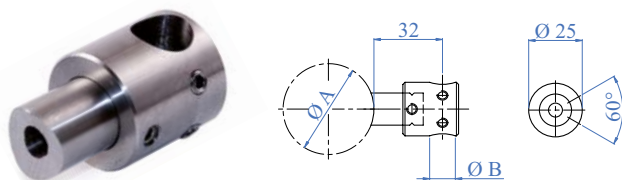


Stainless steel, mirror polished, individually packed

AISI316	DIMENSIONS	LENGTH	WEIGHT
Mirror Polished			
X4851	Ø 12mm	3000mm	2.66kg
X4851/6000	Ø 12mm	6000mm	5.32kg



ROUND BAR HOLDERS



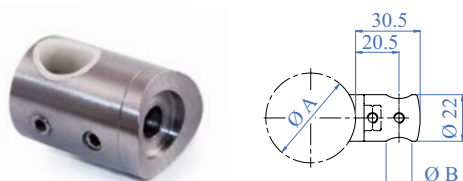
Complete with 2 pieces and threaded lock for rod

AISI303	AISI316	FOR TUBE A	HOLE B	DESCRIPTION
-	E006316	Ø 33.7 - Ø 42.4mm	Ø 12.2mm	Through
E0066	E0066316	Ø 33.7 - Ø 42.4mm	Ø 14.2mm	Through
E0067	-	Ø 33.7 - Ø 42.4mm	Ø 14.2mm	Blind - L
E0068	-	Ø 33.7 - Ø 42.4mm	Ø 14.2mm	Blind - R



Complete with 2 pieces and threaded lock for rod

AISI303	AISI316	FOR TUBE A	HOLE B
E0069101	E0069101316	Ø 33.7mm	Ø 10.2mm through
E006911	E006911316	Ø 33.7mm	Ø 12.2mm through
E0069/38	-	Ø 38.1mm	Ø 12.2mm through
E006910	E006910316	Ø 42.4mm	Ø 10.2mm through
E0069	E4042	Ø 42.4mm	Ø 12.2mm through
E00691	E4040	Ø 42.4mm	Ø 14.2mm through
E006916	-	Ø 48.3mm	Ø 12.2mm through
E006912	E4043	Ø 48.3mm	Ø 14.2mm through
E006917	-	Flat face	Ø 10.2mm through
E00692	E4044	Flat face	Ø 12.2mm through
E006921	-	Flat face	Ø 14.2mm through
Mirror Polished			
X0069	X4042	Ø 42.4mm Ø 43.0mm	Ø 12.2mm through



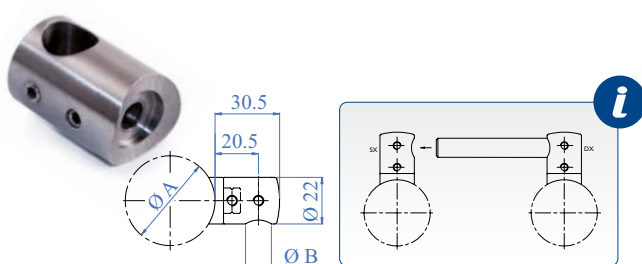
Complete with 2 pieces and threaded lock for rod and teflon spacer

AISI303	AISI316	FOR TUBE A	HOLE B
E006918	E006918316	Ø 42.4mm	Ø 12.2mm through

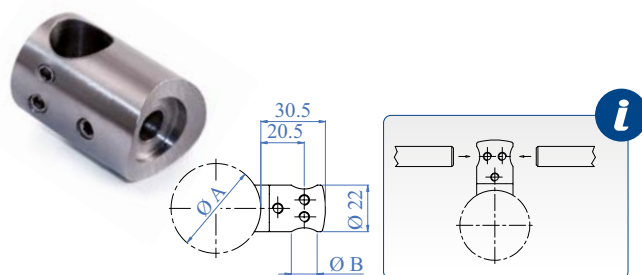


ANTI-SCRATCH BAR HOLDER,
VERY USEFUL WITH PAINTED
RODS

ROUND BAR HOLDERS



AISI303	AISI316	FOR TUBE A	HOLE B
E0069100	E40493	Ø 42.4mm	Ø 12.2mm blind right
E006922	E40492	Ø 42.4mm	Ø 12.2mm blind left
-	E40494	Flat face	Ø 12.2mm blind right
-	E40495	Flat face	Ø 12.2mm blind left



AISI303	AISI316	FOR TUBE A	HOLE B
E00692100	-	Ø 33.7mm	Ø 10.2mm through
-	E40422200	Ø 33.7mm	Ø 12.2mm through
E00693100	-	Ø 42.4mm	Ø 10.2mm through
E00693200	E40423200	Ø 42.4mm	Ø 12.2mm through
E00693400	-	Flat face	Ø 10.2mm through

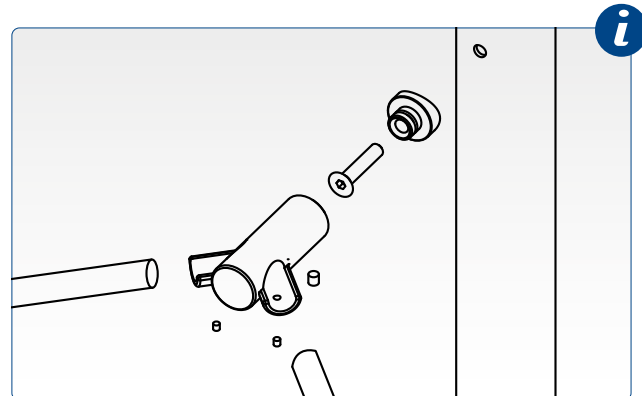
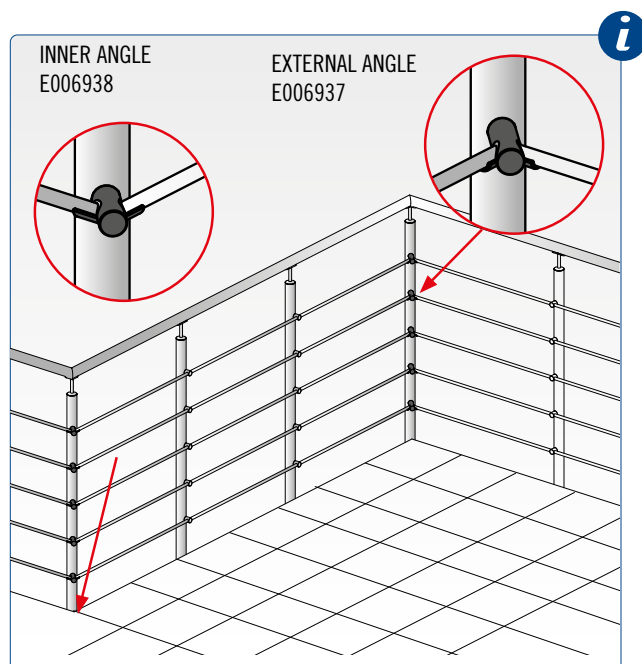
ANGLE ROUND BAR HOLDERS



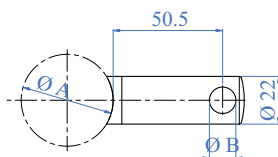
AISI304	FOR TUBE A	B
E006937	Ø 42.4mm	Ø 12mm



AISI304	FOR TUBE A	B
E006938	Ø 42.4mm	Ø 12mm



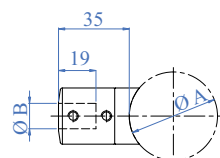
ROUND BAR HOLDERS



Two components, complete with grub screws

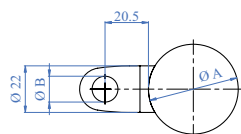
AISI303	FOR TUBE A	HOLE B
E006934	Flat face	Ø 12.2mm

Round



Two components, complete with grub screws

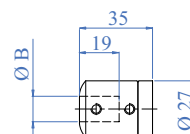
AISI303	AISI316	FOR TUBE A	ROUND BAR B
E01651	E41651	Ø 42.4mm	Ø 12.2mm



Two components, complete with grub screws

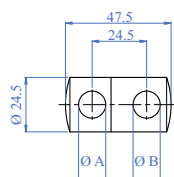
AISI316	FOR TUBE A	HOLE B
E40429100	Ø 33.7mm	Ø 10.2mm

Flat face



Two components, complete with grub screws

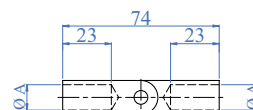
AISI303	AISI316	FOR TUBE	ROUND BAR B
E00654	-	Flat face	Ø 10.2mm
E00651	E40651	Flat face	Ø 12.2mm



Two components, complete with grub screws

AISI303	HOLE A	HOLE B
E006966	Ø 12.2mm	Ø 12.2mm

ADJUSTABLE



AISI303	AISI316	ROUND BAR A
E0170	E0170316	Ø 12mm
E0172	-	Ø 10mm