

aalco®

ARCHITECTURAL
HANDRAIL
SYSTEMS

www.aalco-handrail.com

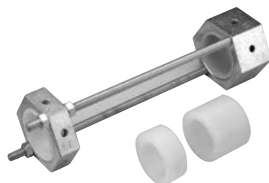
AALCO COMPONENTS

ACCESSORIES



ACCESSORIES

Drilling template, patented for tubes Ø 33.7 - 42.4 - 48.3mm
Makes round holes Ø 7 - 9 - 11mm for threaded inserts and holes for M5 - M6 - M8 threads



Art. no.

E40580

Plastic carrying case containing riveting tool for threaded inserts along with M5, M6, M8 mandrels and heads



Art. no.

E40590

Mandrels for riveting tool



Art. no.

THREAD

E40590/M5

M5

E40590/M8

M8



Threaded inserts for riveting tool



AISI304

THREAD

E40591

M5

E40592

M6

E40593

M8

Threaded inserts for riveting tool



IRON

THREAD

I40591

M5

I40592

M6

I40593

M8

Spray-on zinc to retouch welding spots for use with Systema Iron



Art. no.

185/9

Adjustable wrench to tighten rods and suspended steps



Art. no.

E40695

10 Scotch-Brite cloths



Art. no.

E40586

Set of hexagonal allen keys
1.5 - 2 - 2.5 - 3 - 4 - 5 - 8 - 9mm



Art. no.

E40587

Spanner



Art. no.

E40790

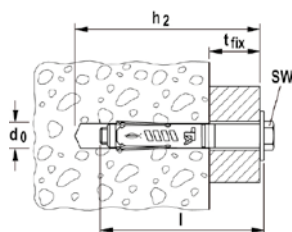
E40791

E40792

FASTENINGS

Expanding metallic anchoring

All-purpose dowel with TA M-T screw



A = Zinc-coated steel

B = \varnothing Hole (mm)

C = Minimum hole depth h_2 [mm]

D = Anchoring length l [mm]

E = Maximum fastening thickness t_{fix} [mm]

F = \varnothing x length [mm]

G = Tightening key ffj SW [mm]

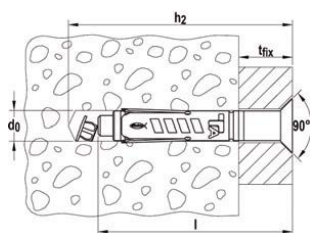
H = Packaging [pz]

	A	B	C	D	E	F	G	H
Product	gvz							
TA M6 T/25 S	090267	10	90	80	25	M 6 x 80	10	50
TA M8 T/25 S	090268	12	95	84	25	M 8 x 80	13	50
TA M10 T/25 S	090269	15	110	100	25	M 10 x 100	17	50
TA M12 T/25 S	090270	18	120	114	25	M 12 x 110	19	50

TA M -S K all-purpose dowel with plain flaring head



fischer
innovative solutions



	A	B	C	D	E	F	G	H
Product	gvz							
TA M 6/30 SK	590271	10	90	80	30	M 6 x 80	4	50
TA M 8/30 SK	590272	12	100	84	30	M 8 x 90	5	50
TA M 10/30 SK	590273	15	110	100	30	M 10 x 100	6	50
TA M 12/30 SK	590274	18	125	114	30	M 12 x 115	8	50

Suitable for:

- Uncracked concrete with resistance class from C20/25 to C50/60

Suitable for:

- Uncracked concrete with resistance class C12/15 and C16/20
- Compact natural stone

CERTIFICATIONS

FIP C 700 HP / T-BOND injection chemical system

Hybrid polyester resin for structural applications on brickwork (full and pierced bricks)



fischer
innovative solutions



ANCHORING MATERIALS

Anchorings certification for:

- Full brick in brick and calcium silicate
- Semi - full brick (vertically pierced)
- Hollow block in normal concrete
- Hollow block in lightened concrete

Suitable for non structural applications:

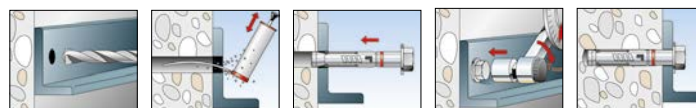
- Concrete not cracked
- Compact natural stone

OPERATION

FIP C700 HP / T-BOND are injection chemical anchorings - two-component, polyester-based hybrids.

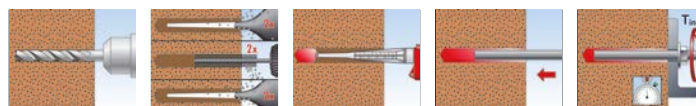
- Resin and hardener are located in separate containers and are not blended or activated as long as extrusion takes place through the mixer.
- Before installing, clean the hole according to recommendations below.
- Extrude FIP C700 HP / T-BOND chemical anchorings without air bubbles, starting from hole bottom.
- Chemical anchoring firmly connects the entire accessory surface side with the hole surface side by sealing it.
- Different-sized cartridges are easily and quickly accessible with fisher dispensers.
- Partially used cartridges can be used by replacing the mixer.

Expansion metallic anchorings



FIP C 700 HP / T-BOND injection chemical system

FIS A installation in full bricks



ACCESSORIES

CLEANING PRODUCTS FOR STAINLESS STEEL

Degreaser spray for cleaning all metal surfaces to be glued.



Art. no.

E4051

Leaves a thin antistatic and water-repellent coat on treated metallic surfaces. Recommended for use on finished products



Art. no.

E4052

Threadlocking



Art. no.

E4053

High-strength adhesive



Art. no.

E4054

De-rusting solution for stainless steel. It is a powerful degreasing product to clean up traces of iron from stainless steel surfaces. It cleans, protects and enhances the original brightness



1 Kg

Art. no.

E4051/D

Product enough for approx 2m²

Passivating product for stainless steel. Its purpose is to create a protective oxide and chrome film on the stainless steel surface



1 Kg

Art. no.

E4051/P

Product enough for approx 2m²

Stainless steel cleaning kit

Including:
250 g ultra active cleaner
250 g surface cleaner
2 special sponges
1 polishing cloth
1 pair of protective glasses and instruction sheet



Art. no.

E91901

HOW TO TREAT OXIDISED STAINLESS STEEL

Stainless steel is a lasting and reliable material. Nevertheless, it is necessary to treat it correctly in order to avoid its oxidation under specific conditions. In fact, stainless steel can oxidise in case of: storage near iron elements; inadequate treatment during the assembly phase; use of the same tools used to work iron elements; urban pollution and dust; and proximity of companies working in the metallurgic field.

In order to meet the needs of its customers, Ind.i.a. spa created a range of specific items: a De-rusting (E4051/D) product for cleaning "polluted" stainless steel components and Passivating (E4051/P) product to restore their protective film.

The combined use of these products makes the "renovation" of surfaces - even those which seem compromised - possible.



Example of a stainless steel picket polluted by external agents like dust and smog



Application of the De-rusting product E4051/D: all polluted parts must be covered



Application of the Passivating product E4051/P: polluted component must be entirely covered



Result of the application of De-rusting and Passivating products



Aalco has 18 service centres around the country which offer a reliable and on-time delivery service anywhere in the UK. Each centre holds stock to meet the immediate needs of customers in the local area and this is backed up by bulk stocks held at a central warehouse.

To find out more, ask for a quotation or to get advice on any product selection, please contact your local Aalco service centre.

ABERDEEN

Tel: 01224 854810
Fax: 01224 871982
aberdeen@aalco.co.uk

LEEDS

Tel: 0113 276 3300
Fax: 0113 276 0382
leeds@aalco.co.uk

AYLESBURY

Tel: 01296 461700
Fax: 01296 339923
aylesbury@aalco.co.uk

LIVERPOOL

Tel: 0151 207 3551
Fax: 0151 207 2657
liverpool@aalco.co.uk

BELFAST

Tel: 028 9083 8838
Fax: 028 9083 7837
belfast@aalco.co.uk

MANCHESTER

Tel: 01204 863456
Fax: 01204 863430
manchester@aalco.co.uk

BIRMINGHAM

Tel: 0121 585 3600
Fax: 0121 585 6864
birmingham@aalco.co.uk

NEWCASTLE

Tel: 0191 491 1133
Fax: 0191 491 1177
newcastle@aalco.co.uk

CHEPSTOW

Tel: 01291 638638
Fax: 01291 638600
chepstow@aalco.co.uk

NORWICH

Tel: 01603 787878
Fax: 01603 789999
norwich@aalco.co.uk

DYFED

Tel: 01269 842044
Fax: 01269 845276
dyfed@aalco.co.uk

NOTTINGHAM

Tel: 0115 988 2600
Fax: 0115 988 2636
nottingham@aalco.co.uk

ESSEX

Tel: 01268 884200
Fax: 01268 884220
essex@aalco.co.uk

SOUTHAMPTON

Tel: 023 8087 5200
Fax: 023 8087 5275
southampton@aalco.co.uk

GLASGOW

Tel: 0141 646 3200
Fax: 0141 646 3260
glasgow@aalco.co.uk

STOKE

Tel: 01782 375700
Fax: 01782 375701
stoke@aalco.co.uk

HULL

Tel: 01482 626262
Fax: 01482 626263
hull@aalco.co.uk

SWANLEY

Tel: 01322 610900
Fax: 01322 610910
swanley@aalco.co.uk

Also available in Ireland

DUBLIN

Tel: +353 (0) 1 629 8600
Fax: +353 (0) 1 629 9200
dublin@amari-dublin.com

CORK

Tel: +353 (0) 21 431 0520
Fax: +353 (0) 21 431 0519
cork@amari-cork.com

