

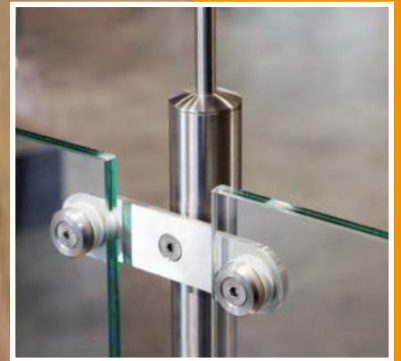
aalco®

ARCHITECTURAL
HANDRAIL
SYSTEMS

www.aalco-handrail.com

AALCO COMPONENTS

GLASS CLAMPS



GLASS CLAMPS

Aalco glass clamps are available in a wide range of different sizes and shapes, with either a flat or radial base, to ensure there is an option to suit numerous applications, whatever the design. Materials available include AISI 316 and AISI 304 stainless steels, Zamac and, on request, mirror polish finish in grade 316. Different glass thicknesses are accommodated through the provision of separate specifically sized rubbers. The modular approach has been designed to allow a combination of different features to tailor the handrail to the requirements of a given application. This modularity is reflected in a product coding system which enables easy identification of a glass clamp's specific features. In addition, we also offer a wide range of glass holders, glass adaptors and glass clamps for ground anchorage, as well as metal sheet holders.



RUBBER Mallet TO BE USED



PRODUCT TO BE GLUED WITH E4054



ASSEMBLY WITH ALLEN KEY



PRODUCT TO BE WELDED

How to read the glass clamps' codes



E 1 10 042 00 EXAMPLE

Finishes	Material	Model	Anchor surface	Rubber
E Satin Finish	1 AISI 304	10 40 x 50 x 24mm Round	000 Flat Surface	00 Without rubber
X Mirror Polished	2 AISI 316	11 45 x 45 x 28mm Square	033 Ø 33.7mm	
J Unpolished	3 Zamac/Aluminium	12 45 x 63 x 28mm Round	042 Ø 42.4mm	
		13 70 x 55 x 40mm Square - With side stopper	048 Ø 48.3mm	
		14 45 x 63 x 30mm Round	050 Ø 50.8mm	
		15 55 x 55 x 35mm Square - With side stopper		
		16 40 x 50 x 28mm Round		

AIS I 304 AIS I 316 STAINLESS STEEL FINISHES



Satin Finish



Mirror Polished

ZAMAC FINISHES



Unpolished



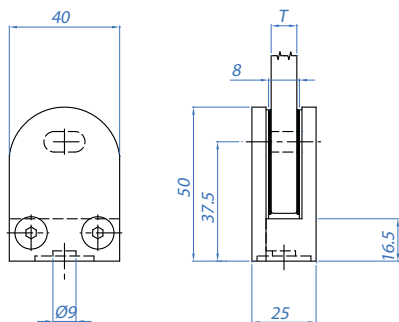
Satin Finish



Mirror Polished

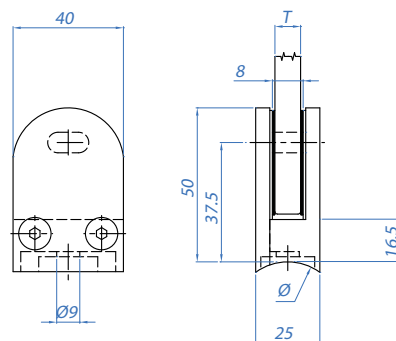
GLASS CLAMPS MODEL 10

GLASS CLAMPS, FLAT BASE



AISI304	FINISH	FOR TUBE Ø	Box
E 1 10 000 00	Satin	Flat surface	4 pcs.
AISI316	FINISH	FOR TUBE Ø	Box
E 2 10 000 00	Satin	Flat surface	4 pcs.
AISI316	FINISH	FOR TUBE Ø	Box
X 2 10 000 00	Mirror	Flat surface	4 pcs.
ZAMAC RAW	FINISH	FOR TUBE Ø	Box
J 3 10 000 00	Raw	Flat surface	4 pcs.

GLASS CLAMPS, RADIAL BASE



AISI304	FINISH	FOR TUBE Ø	Box
E 1 10 033 00	Satin	33.7mm	4 pcs.
E 1 10 042 00	Satin	42.4mm	4 pcs.
AISI316	FINISH	FOR TUBE Ø	Box
E 2 10 033 00	Satin	33.7mm	4 pcs.
E 2 10 042 00	Satin	42.4mm	4 pcs.
AISI316	FINISH	FOR TUBE Ø	Box
X 2 10 033 00	Mirror	33.7mm	4 pcs.
X 2 10 042 00	Mirror	42.4mm	4 pcs.
ZAMAC SATIN	FINISH	FOR TUBE Ø	Box
E 3 10 042 00	Satin	42.4mm	4 pcs.
ZAMAC LUCIDO - SATIN	FINISH	FOR TUBE Ø	Box
X 3 10 042 00	Mirror	42.4mm	4 pcs.

Glass clamps are supplied without rubbers in boxes of 4

RUBBER

Monolithic glass



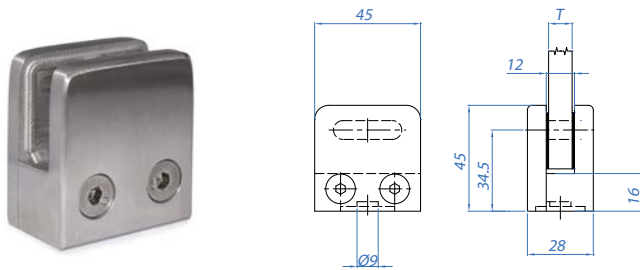
RUBBER	MOD.	GLASS THICKNESS T	NO. SET	NO. PER SET
R 10 06	10	6mm	4	2 pcs.
R 10 08	10	8mm	4	2 pcs.

Laminated glass



RUBBER	MOD.	GLASS THICKNESS T	NO. SET	NO. PER SET
R 10 07	10	6.76mm	4	2 pcs.

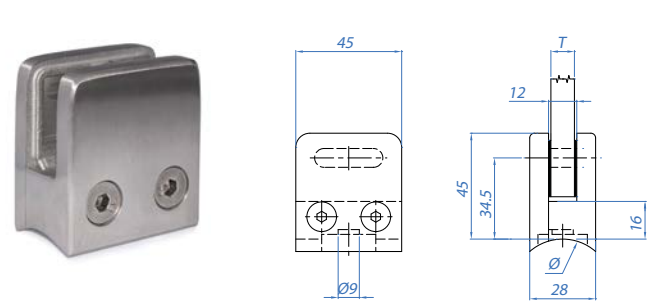
GLASS CLAMPS, FLAT BASE



AISI304	FINISH	FOR TUBE Ø	Box
E 1 11 000 00	Satin	Flat surface	4 pcs.
AISI316	FINISH	FOR TUBE Ø	Box
E 2 11 000 00	Satin	Flat surface	4 pcs.
AISI316	FINISH	FOR TUBE Ø	Box
X 2 11 000 00	Mirror	Flat surface	4 pcs.
ZAMAC GREZZO - RAW	FINISH	FOR TUBE Ø	Box
J 3 11 000 00	Raw	Flat surface	4 pcs.
ZAMAC SATINATO - SATIN	FINISH	FOR TUBE Ø	Box
E 3 11 042 00	Satin	Flat surface	4 pcs.
ZAMAC LUCIDO - MIRROR	FINISH	FOR TUBE Ø	Box
X 3 11 042 00	Mirror	Flat surface	4 pcs.

Glass clamps are supplied without rubbers in boxes of 4

GLASS CLAMPS, RADIAL BASE



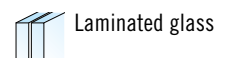
AISI304	FINISH	FOR TUBE Ø	Box
E 1 11 042 00	Satin	42.4mm	4 pcs.
E 1 11 048 00	Satin	48.3mm	4 pcs.
AISI316	FINISH	FOR TUBE Ø	Box
E 2 11 042 00	Satin	42.4mm	4 pcs.
E 2 11 048 00	Satin	48.3mm	4 pcs.
AISI316	FINISH	FOR TUBE Ø	Box
X 2 11 042 00	Mirror	42.4mm	4 pcs.
ZAMAC SATINATO - SATIN	FINISH	FOR TUBE Ø	Box
E 3 11 042 00	Satin	42.4mm	4 pcs.
ZAMAC LUCIDO - SATIN	FINISH	FOR TUBE Ø	Box
X 3 11 042 00	Mirror	42.4mm	4 pcs.

RUBBER



Monolithic glass

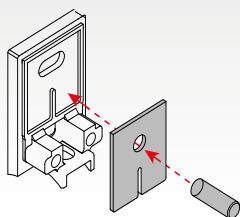
RUBBER	MOD.	GLASS THICKNESS T	NO. SET	NO. PER SET
R 11 06	11	6mm	4	2 pcs.
R 11 08	11	8mm	4	2 pcs.
R 11 10	11	10mm	4	2 pcs.



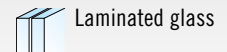
Laminated glass

RUBBER	MOD.	GLASS THICKNESS T	NO. SET	NO. PER SET
R 11 07	11	6.76mm	4	2 pcs.
R 11 09	11	8.76mm	4	2 pcs.
R 11 44	11	9.52mm	4	2 pcs.

i



KIT WITH RUBBER AND
SECURITY PIN
FOR MODEL 11

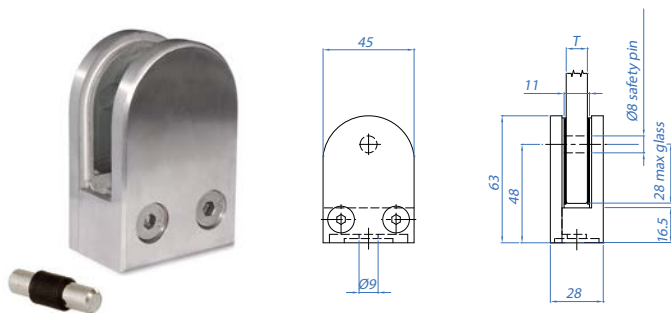


Laminated glass

SAFETY KIT	MOD.	GLASS THICKNESS T	NO. SET	NO. PER SET
R 11 09P	11	8.76 mm	4	2 pcs.
R 11 11P	11	10.76 mm	4	2 pcs.

GLASS CLAMPS MODEL 12

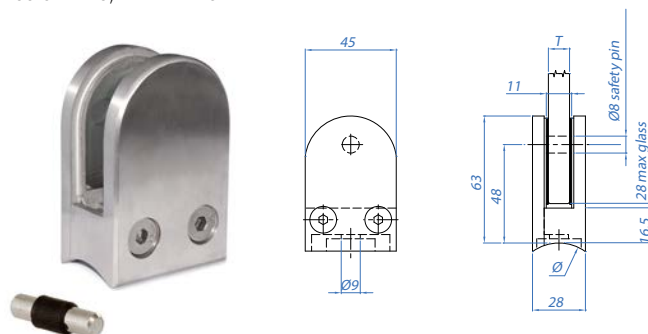
GLASS CLAMPS, FLAT BASE



With locking pin

AISI304					FINISH	FOR TUBE Ø	Box
E	1	12	000	00	Satin	Flat surface	4 pcs.
AISI316					FINISH	FOR TUBE Ø	Box
E	2	12	000	00	Satin	Flat surface	4 pcs.
AISI316					FINISH	FOR TUBE Ø	Box
X	2	12	000	00	Mirror	Flat surface	4 pcs.
ZAMAC RAW					FINISH	FOR TUBE Ø	Box
J	3	12	000	00	Raw	Flat surface	4 pcs.
ZAMAC SATIN					FINISH	FOR TUBE Ø	Box
E	3	12	000	00	Satin	Flat surface	4 pcs.
ZAMAC MIRROR					FINISH	FOR TUBE Ø	Box
X	3	12	000	00	Mirror	Flat surface	4 pcs.

GLASS CLAMPS, RADIAL BASE

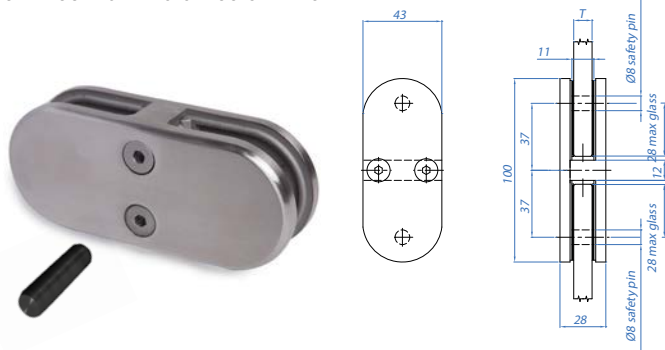


With locking pin

AISI304					FINISH	FOR TUBE Ø	Box
E	1	12	042	00	Satin	42.4mm	4 pcs.
E	1	12	048	00	Satin	48.3mm	4 pcs.
AISI316					FINISH	FOR TUBE Ø	Box
E	2	12	042	00	Satin	42.4mm	4 pcs.
E	2	12	048	00	Satin	48.3mm	4 pcs.
AISI316					FINISH	FOR TUBE Ø	Box
X	2	12	042	00	Mirror	42.4mm	4 pcs.
X	2	12	048	00	Mirror	48.3mm	4 pcs.
ZAMAC RAW					FINISH	FOR TUBE Ø	Box
J	3	12	042	00	Raw	42.4mm	4 pcs.
ZAMAC SATIN					FINISH	FOR TUBE Ø	Box
E	3	12	042	00	Satin	42.4mm	4 pcs.
ZAMAC SATIN					FINISH	FOR TUBE Ø	Box
X	3	12	042	00	Mirror	42.4mm	4 pcs.

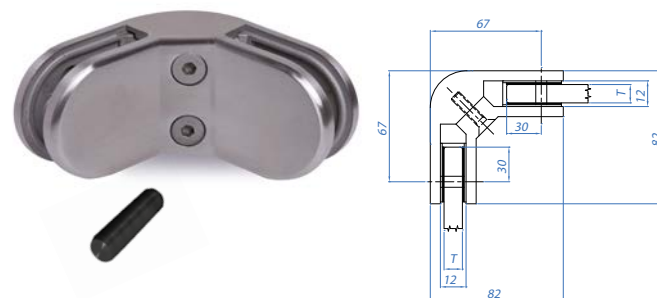


SELF-SUPPORTING GLASS CLAMPS



With locking pin

AISI316					FINISH	DIMENSIONS
E	2	12	180	00	Satin	43 x 100 x 28mm



With locking pin

AISI304					FINISH	DIMENSIONS
E	1	12	090	00	Satin	82 x 82 x 28mm

AISI316					FINISH	DIMENSIONS
E	2	12	090	00	Satin	82 x 82 x 28mm

Glass clamps are supplied without rubbers in boxes of 4

RUBBER

Monolithic glass



RUBBER	MOD.	GLASS THICKNESS T	NO. SET	NO. PER SET
R 12 06	12	6mm	4	2 pcs.
R 12 08	12	8mm	4	2 pcs.
R 12 10	12	10mm	4	2 pcs.

Laminated glass

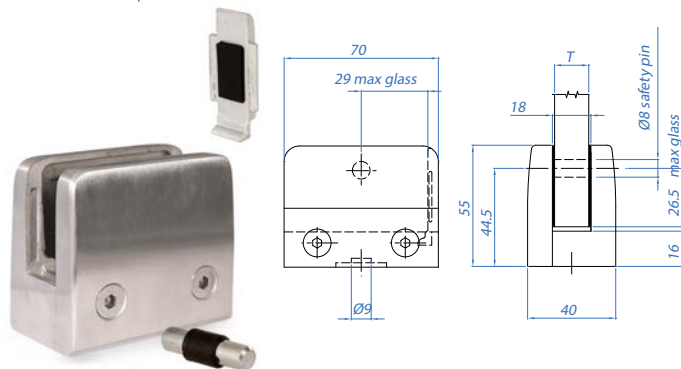


RUBBER	MOD.	GLASS THICKNESS T	NO. SET	NO. PER SET
R 12 07	12	6.76mm	4	2 pcs.
R 12 09	12	8.76mm	4	2 pcs.
R 12 44	12	9.52mm	4	2 pcs.



GLASS CLAMPS MODEL 13

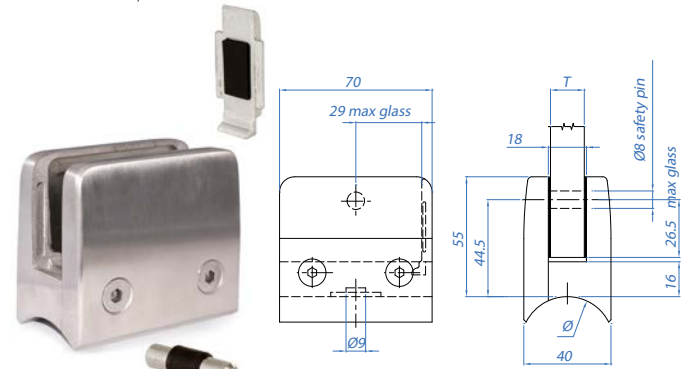
GLASS CLAMPS, FLAT BASE



With locking pin

AISI304	FINISH	FOR TUBE Ø	Box
E 1 13 000 00	Satin	Flat surface	4 pcs.
AISI316	FINISH	FOR TUBE Ø	Box
E 2 13 000 00	Satin	Flat surface	4 pcs.
AISI316	FINISH	FOR TUBE Ø	Box
X 2 13 000 00	Mirror	Flat surface	4 pcs.
ZAMAC RAW	FINISH	FOR TUBE Ø	Box
J 3 13 000 00	Raw	Flat surface	4 pcs.
ZAMAC SATIN	FINISH	FOR TUBE Ø	Box
E 3 13 000 00	Satin	Flat surface	4 pcs.
ZAMAC MIRROR	FINISH	FOR TUBE Ø	Box
X 3 13 000 00	Mirror	Flat surface	4 pcs.

GLASS CLAMPS, RADIAL BASE



With locking pin

AISI304	FINISH	FOR TUBE Ø	Box
E 1 13 048 00	Satin	48.3mm	4 pcs.
AISI316	FINISH	FOR TUBE Ø	Box
E 2 13 048 00	Satin	48.3mm	4 pcs.
AISI316	FINISH	FOR TUBE Ø	Box
X 2 13 048 00	Mirror	48.3mm	4 pcs.
ZAMAC SATIN	FINISH	FOR TUBE Ø	Box
E 3 13 048 00	Satin	48.3mm	4 pcs.
ZAMAC SATIN	FINISH	FOR TUBE Ø	Box
X 3 13 048 00	Mirror	48.3mm	4 pcs.

Glass clamps are supplied without rubbers in boxes of 4

RUBBER

Monolithic glass

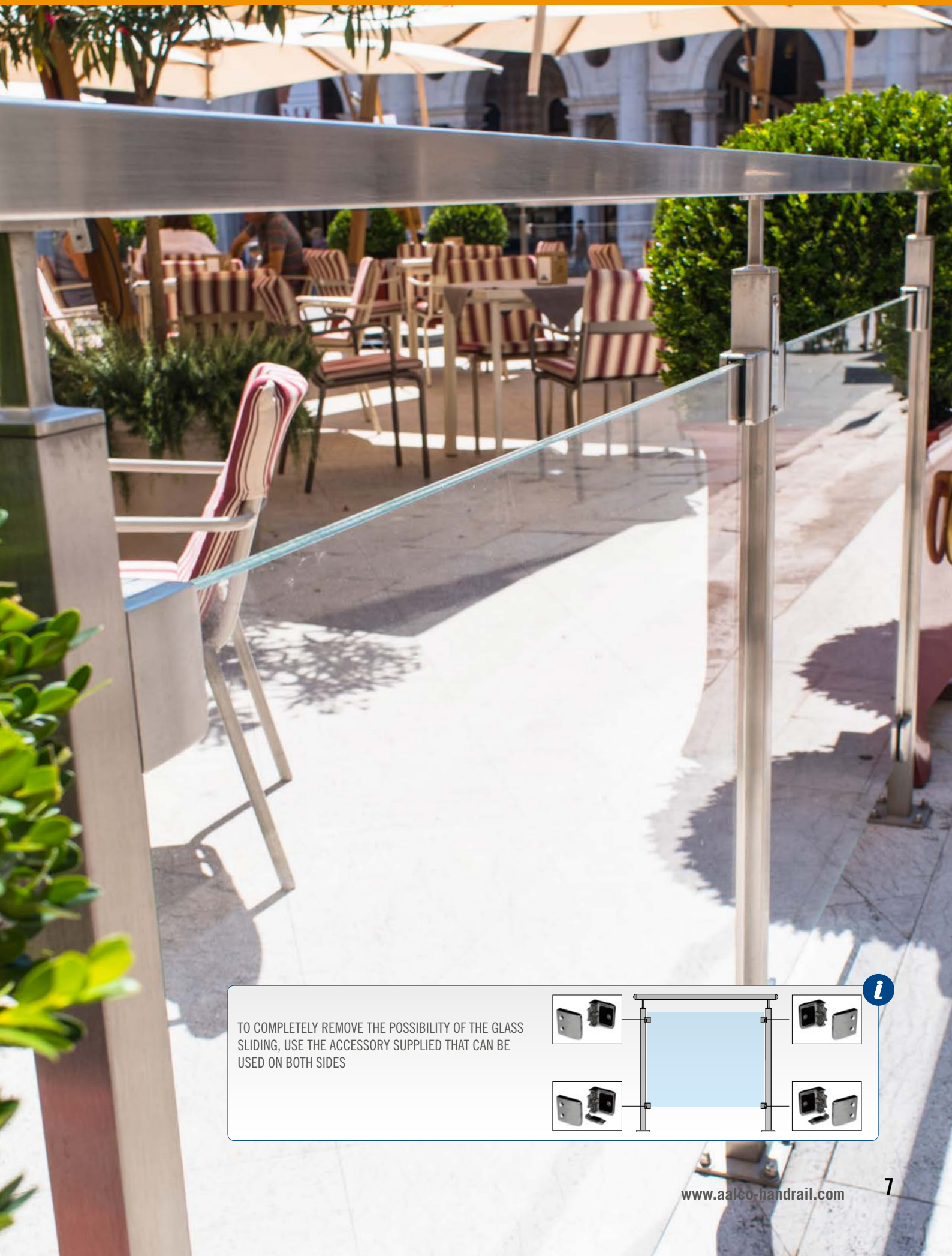


RUBBER	MOD.	GLASS THICKNESS T	NO. SET	NO. PER SET
R 13 12	13	12mm	4	2 pcs.
R 13 15	13	15mm	4	2 pcs.

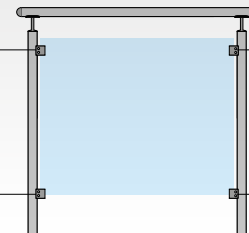
Laminated glass



RUBBER	MOD.	GLASS THICKNESS T	NO. SET	NO. PER SET
R 13 44	13	9.52mm	4	2 pcs.
R 13 13	13	12.76mm	4	2 pcs.
R 13 17	13	16.76mm	4	2 pcs.
R 13 18	13	17.52mm	4	2 pcs.

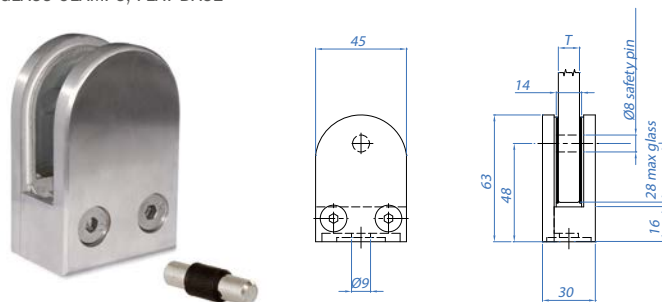


TO COMPLETELY REMOVE THE POSSIBILITY OF THE GLASS
SLIDING, USE THE ACCESSORY SUPPLIED THAT CAN BE
USED ON BOTH SIDES

**i**

GLASS CLAMPS MODEL 14

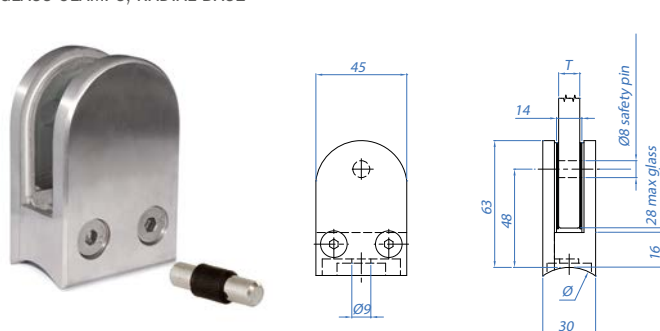
GLASS CLAMPS, FLAT BASE



With locking pin

AISI304		FINISH	FOR TUBE Ø	Box
E	1 14 000 00	Satin	Flat surface	4 pcs.
AISI316		FINISH	FOR TUBE Ø	Box
E	2 14 000 00	Satin	Flat surface	4 pcs.
AISI316		FINISH	FOR TUBE Ø	Box
X	2 14 000 00	Mirror	Flat surface	4 pcs.
ZAMAC RAW		FINISH	FOR TUBE Ø	Box
J	3 14 000 00	Raw	Flat surface	4 pcs.
ZAMAC SATIN		FINISH	FOR TUBE Ø	Box
E	3 14 000 00	Satin	Flat surface	4 pcs.
ZAMAC MIRROR		FINISH	FOR TUBE Ø	Box
X	3 14 000 00	Mirror	Flat surface	4 pcs.

GLASS CLAMPS, RADIAL BASE



With locking pin

AISI304		FINISH	FOR TUBE Ø	Box
E	1 14 042 00	Satin	42.4mm	4 pcs.
E	1 14 048 00	Satin	48.3mm	4 pcs.
AISI316		FINISH	FOR TUBE Ø	Box
E	2 14 042 00	Satin	42.4mm	4 pcs.
E	2 14 048 00	Satin	48.3mm	4 pcs.
AISI316		FINISH	FOR TUBE Ø	Box
X	2 14 042 00	Mirror	42.4mm	4 pcs.
ZAMAC SATIN		FINISH	FOR TUBE Ø	Box
E	3 14 042 00	Satin	42.4mm	4 pcs.
ZAMAC SATIN		FINISH	FOR TUBE Ø	Box
X	3 14 042 00	Mirror	42.4mm	4 pcs.

Glass clamps are supplied without rubbers in boxes of 4

RUBBER

Monolithic glass



RUBBER	MOD.	GLASS THICKNESS T	NO. SET	NO PER SET
R 14 12	14	12mm	4	2 pcs.

Laminated glass

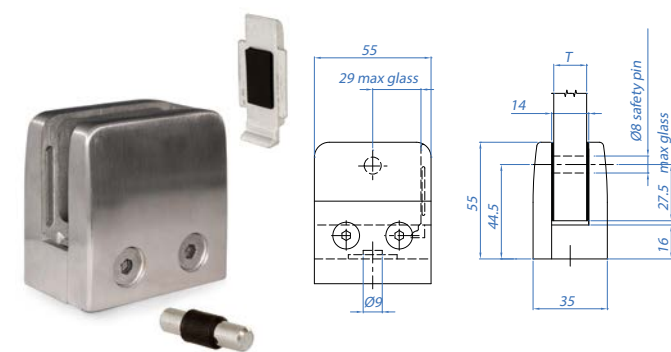


RUBBER	MOD.	GLASS THICKNESS T	NO. SET	NO PER SET
R 14 11	14	10.76mm	4	2 pcs.
R 14 13	14	12.76mm	4	2 pcs.
R 14 14	14	13.52mm	4	2 pcs.



GLASS CLAMPS MODEL 15

GLASS CLAMPS, FLAT BASE

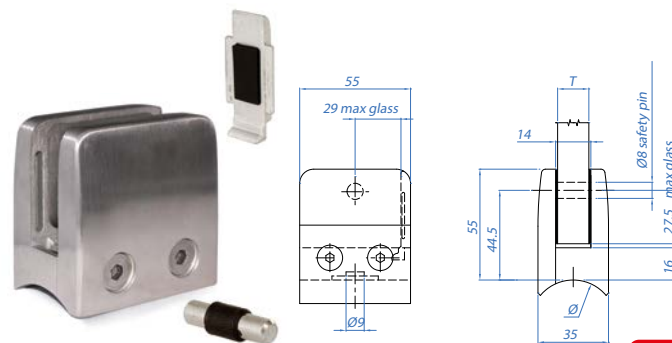


With locking pin

AISI304	FINISH	FOR TUBE Ø	Box
E 1 15 000 00	Satin	Flat surface	4 pcs.
AISI316	FINISH	FOR TUBE Ø	Box
E 2 15 000 00	Satin	Flat surface	4 pcs.
AISI316	FINISH	FOR TUBE Ø	Box
X 2 15 000 00	Mirror	Flat surface	4 pcs.
ZAMAC RAW	FINISH	FOR TUBE Ø	Box
J 3 15 000 00	Raw	Flat surface	4 pcs.
ZAMAC SATIN	FINISH	FOR TUBE Ø	Box
E 3 15 000 00	Satin	Flat surface	4 pcs.
ZAMAC MIRROR	FINISH	FOR TUBE Ø	Box
X 3 15 000 00	Mirror	Flat surface	4 pcs.

Glass clamps are supplied without rubbers in boxes of 4

GLASS CLAMPS, RADIAL BASE

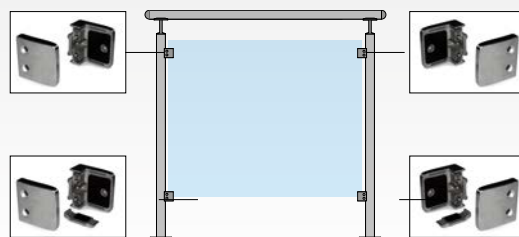


With locking pin



AISI304	FINISH	FOR TUBE Ø	Box
E 1 15 042 *00	Satin	42.4mm	4 pcs.
E 1 15 048 00	Satin	48.3mm	4 pcs.
AISI316	FINISH	FOR TUBE Ø	Box
E 2 15 042 *00	Satin	42.4mm	4 pcs.
E 2 15 048 00	Satin	48.3mm	4 pcs.
AISI316	FINISH	FOR TUBE Ø	Box
X 2 15 042 *00	Lucido - Mirror	42.4mm	4 pcs.

TO COMPLETELY REMOVE THE POSSIBILITY OF THE GLASS SLIDING, USE THE ACCESSORY SUPPLIED THAT CAN BE USED ON BOTH SIDES



RUBBER

Monolithic glass



RUBBER	MOD.	GLASS THICKNESS T	NO. SET	NO. PER SET
R 15 08	15	8mm	4	2 pcs.
R 15 10	15	10mm	4	2 pcs.
R 15 12	15	12mm	4	2 pcs.

Laminated glass

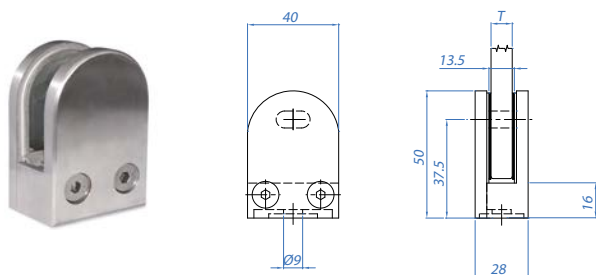


RUBBER	MOD.	GLASS THICKNESS T	NO. SET	NO. PER SET
R 15 09	15	8.76mm	4	2 pcs.
R 15 44	15	9.52mm	4	2 pcs.
R 15 11	15	10.76mm	4	2 pcs.
R 15 13	15	12.76mm	4	2 pcs.



GLASS CLAMPS MODEL 16

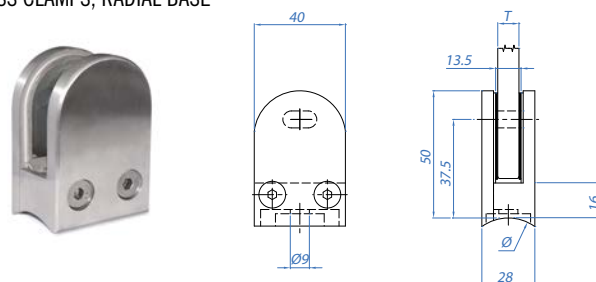
GLASS CLAMPS, FLAT BASE



AISI304	FINISH	FOR TUBE Ø	Box
E 1 16 000 00	Satin	Flat surface	4 pcs.
AISI316	FINISH	FOR TUBE Ø	Box
E 2 16 000 00	Satin	Flat surface	4 pcs.
AISI316	FINISH	FOR TUBE Ø	Box
X 2 16 000 00	Mirror	Flat surface	4 pcs.
ZAMAC RAW	FINISH	FOR TUBE Ø	Box
J 3 16 000 00	Raw	Flat surface	4 pcs.
ZAMAC SATIN	FINISH	FOR TUBE Ø	Box
E 3 16 000 00	Satin	Flat surface	4 pcs.
ZAMAC MIRROR	FINISH	FOR TUBE Ø	Box
X 3 16 000 00	Mirror	Flat surface	4 pcs.

Glass clamps are supplied without rubbers in boxes of 4

GLASS CLAMPS, RADIAL BASE

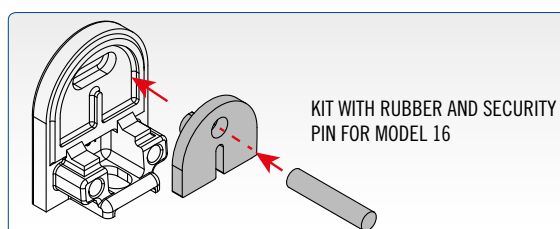


AISI304	FINISH	FOR TUBE Ø	Box
E 1 16 033 00	Satin	33.7mm	4 pcs.
E 1 16 042 00	Satin	42.4mm	4 pcs.
AISI316	FINISH	FOR TUBE Ø	Box
E 2 16 033 00	Satin	33.7mm	4 pcs.
E 2 16 042 00	Satin	42.4mm	4 pcs.
AISI316	FINISH	FOR TUBE Ø	Box
X 2 16 042 00	Mirror	42.4mm	4 pcs.
ZAMAC SATIN	FINISH	FOR TUBE Ø	Box
E 3 16 042 00	Satin	42.4mm	4 pcs.
ZAMAC SATIN	FINISH	FOR TUBE Ø	Box
X 3 16 042 00	Mirror	42.4mm	4 pcs.

RUBBER

RUBBER	MOD.	GLASS THICKNESS T	NO. SET	NO. PER SET
R 16 10	16	10mm	4	2 pcs.

RUBBER	MOD.	GLASS THICKNESS T	NO. SET	NO. PER SET
R 16 09	16	8.76mm	4	2 pcs.
R 16 44	16	9.52mm	4	2 pcs.
R 16 11	16	10.76mm	4	2 pcs.



SAFETY KIT	MOD.	GLASS THICKNESS T	NO. SET	NO. PER SET
R 16 09P	16	8.76mm	4	2 pcs.
R 16 11P	16	10.76mm	4	2 pcs.

Laminated glass



SAFETY PIN



Removes any chance of the glass sliding, giving peace of mind.



Saves time and money, as you do not need to drill the glass to insert the safety pins inside the clamps. The cost of drilling 4 holes in the glass averages an additional 15% on the cost of 1m² of glass - a cost that this accessory eliminates.

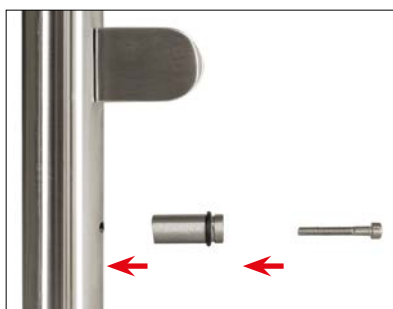


Only one **safety pin** is used on each side of the post.



1

DRILL A HOLE IN THE POST
BENEATH THE GLASS CLAMP



2

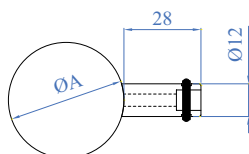
INSERT THE SAFETY PIN



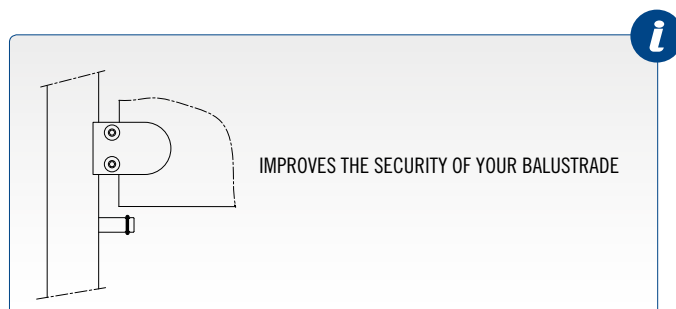
3

FIT THE GLASS

EXTERNAL SAFETY PIN

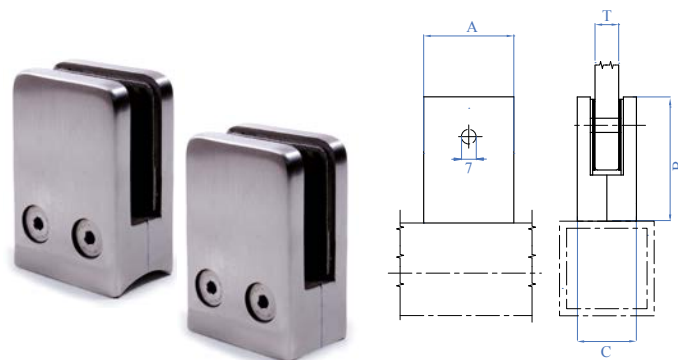
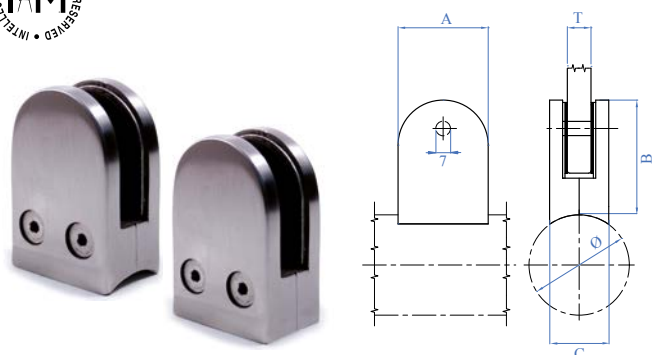


AISI304	AISI316	FOR TUBE A
E21710	E41710	Ø 33.7mm
E21810	E41810	Ø 42.4mm
E21910	E41910	Flat surface



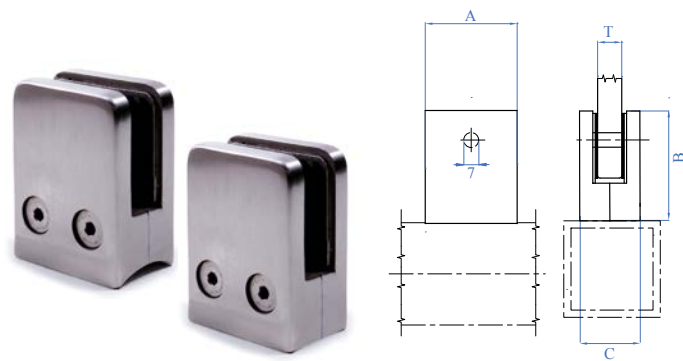
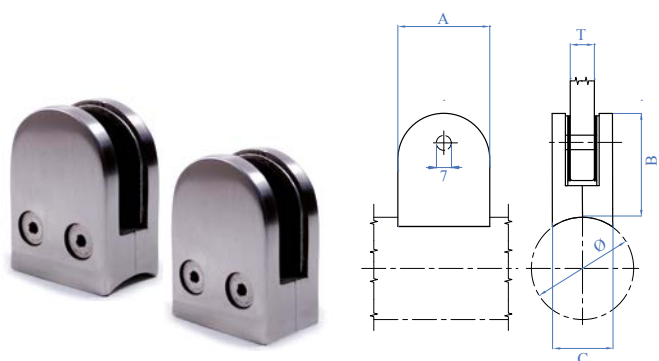


THESE LIGHT GLASS CLAMPS ARE SUPPLIED WITH RUBBERS FOR THE FOLLOWING GLASS THICKNESSES: 8-8.76-10-10.76-12-12.76mm



AISI316	FINISH	A x B x C	Ø	GLASS THICKNESS T
E0082	Satin	43 x 64 x 28mm	42.4mm	from 8 to 12.76mm
E0083	Satin	43 x 64 x 28mm	Flat surface	from 8 to 12.76mm

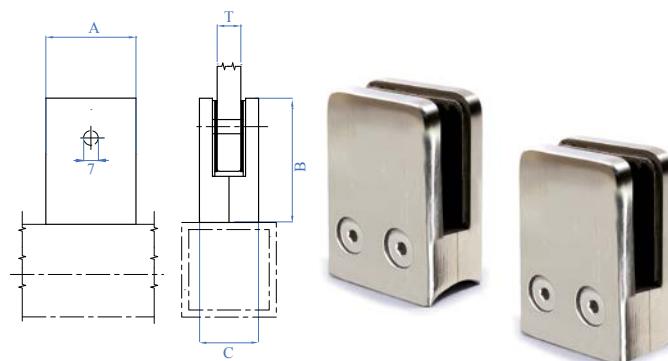
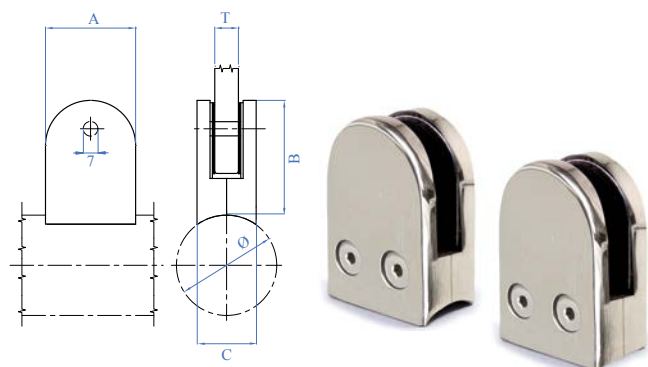
AISI316	FINISH	A x B x C	Ø	GLASS THICKNESS T
E0084	Satin	43 x 69 x 28mm	42.4mm	from 8 to 12.76mm
E0085	Satin	43 x 69 x 28mm	Flat surface	from 8 to 12.76mm



AISI316	FINISH	A x B x C	Ø	GLASS THICKNESS T
E0086	Satin	43 x 54 x 28mm	42.4mm	from 8 to 12.76mm
E0087	Satin	43 x 54 x 28mm	Flat surface	from 8 to 12.76mm

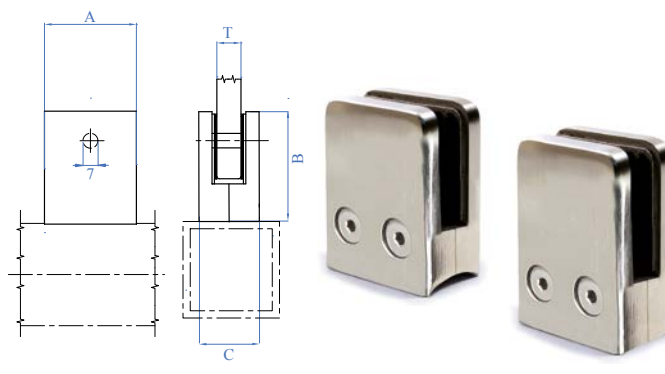
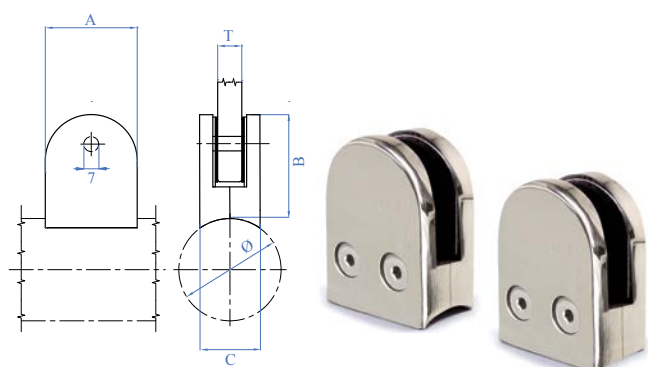
AISI316	FINISH	A x B x C	Ø	GLASS THICKNESS T
E0088	Satin	43 x 59 x 28mm	42.4 mm	from 8 to 12.76mm
E0089	Satin	43 x 59 x 28mm	Flat surface	from 8 to 12.76mm

Glass clamps are supplied with rubbers in boxes of 4



AISI316	FINISH	A x B x C	Ø	GLASS THICKNESS T
X0082	Mirror	43 x 64 x 28mm	42.4mm	from 8 to 12.76mm
X0083	Mirror	43 x 64 x 28mm	Flat surface	from 8 to 12.76mm

AISI316	FINISH	A x B x C	Ø	GLASS THICKNESS T
X0084	Mirror	43 x 69 x 28mm	42.4mm	from 8 to 12.76mm
X0085	Mirror	43 x 69 x 28mm	Flat surface	from 8 to 12.76mm



AISI316	FINISH	A x B x C	Ø	GLASS THICKNESS T
X0086	Mirror	43 x 54 x 28mm	42.4mm	from 8 to 12.76mm
X0087	Mirror	43 x 54 x 28mm	Flat surface	from 8 to 12.76mm

AISI316	FINISH	A x B x C	Ø	GLASS THICKNESS T
X0088	Mirror	43 x 59 x 28mm	42.4mm	from 8 to 12.76mm
X0089	Mirror	43 x 59 x 28mm	Flat surface	from 8 to 12.76mm

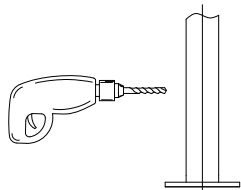
Glass clamps are supplied with rubbers in boxes of 4



GLASS CLAMPS INSTALLATION

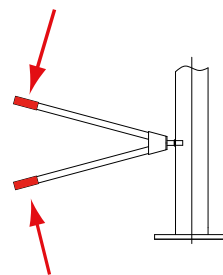
1

Drill an 11mm hole in the tube



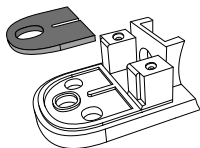
2

Use a riveting tool with an M8 rivet



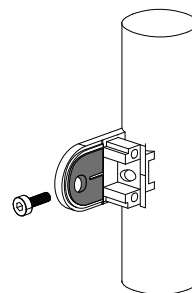
3

Put the rubbers of the required thickness in the appropriate position



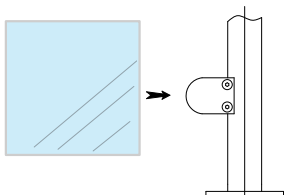
4

Fix the support to the tube by using an M8 screw



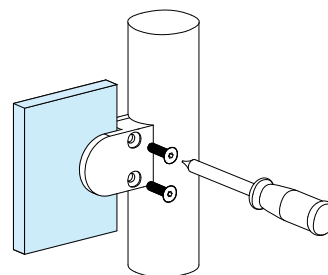
5

Position the glass against the support



6

Fix the support to the clamp with an M6 screw



WARNING

Please retain this brochure particularly the installation manual. Read the instruction manual carefully before assembling and installing the component parts. Always follow the legislation appropriate to the country of installation and for special projects please check local and national building regulations. Fit all parts as indicated in the relevant installation manual. Do not fit or use any products if you have doubts concerning its fitting. Do not use or install the products if you are missing any component pieces. In such cases, please contact your local Service Centre.

CHECKING AND MAINTENANCE

The fitting of any installation must be carried out by skilled workers, following instructions contained in the technical sheets supplied. Regular, periodical maintenance and checking are needed in order to gain and maintain the functionality and efficiency of any installation. Again, inspection and maintenance should only be carried out by competent and skilled workers.

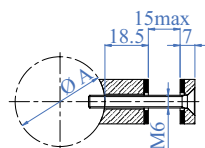
We therefore suggest using only installers recommended by the manufacturer. Failure to do so will result in Aalco refusing all responsibility.

CLEANING INSTRUCTIONS

The use of stainless steel metallic parts guarantees the resistance to different atmospheric conditions. Do not use acids, alkaline solutions, abrasives or corrosive agents to clean the railings.

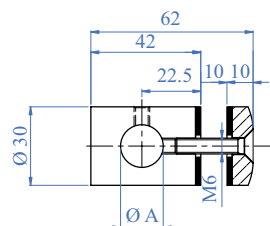


GLASS CLAMPS



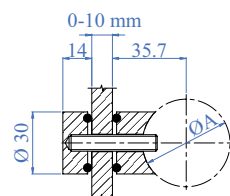
2 pieces with screw and plastic washers

AISI304	AISI316	FOR TUBE A
E40560304	E40560	Ø 42.4mm
E40570304	E40570	Flat face



Complete with PVC plastic washers

AISI304	AISI316	HOLE
E4032/304	E4032	Ø 12.2mm
E4031/304	-	Ø 14.2mm
E4030/304	E4030	Ø 16.2mm



AISI316	FOR TUBE A
E40581	Ø 424mm
E40583	Flat face





THE GLASS SYSTEM

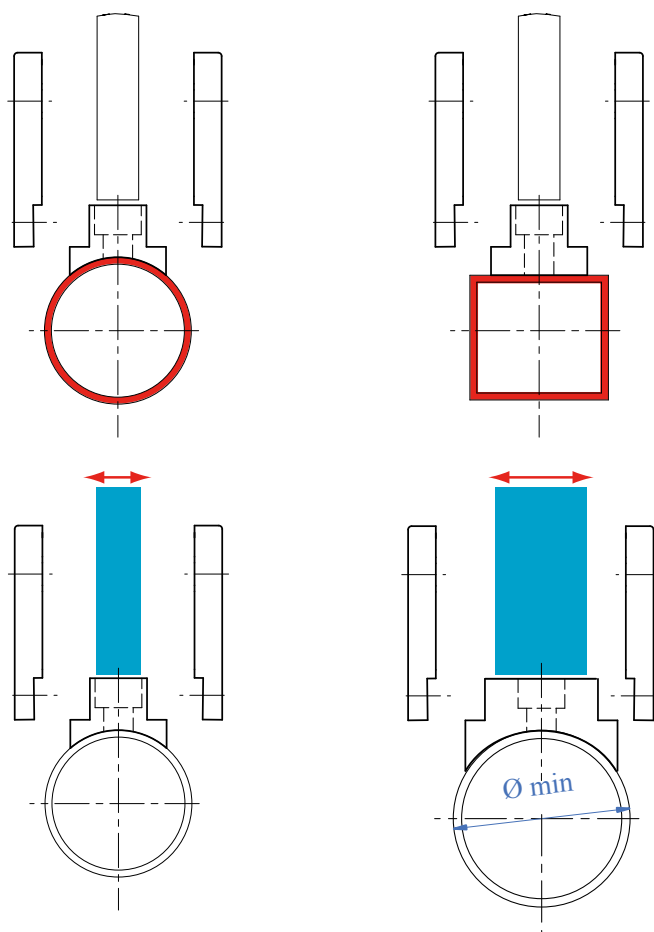


ALSO FOR SAFETY
GLASS
8 + 8mm
10 + 10mm

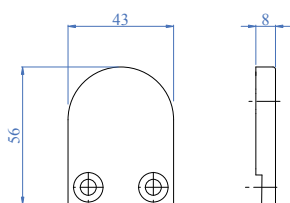
MODULAR
GLASS FIXING
SYSTEM

WHY IS IT INNOVATIVE?

- The interchangeable clamp can be used with almost any tube - and with welding
- The thickness of the glass used can be changed according to the thickness of the interchangeable anchorage
- A few accessories, a lot of solutions



SIDE FIXING PLATES

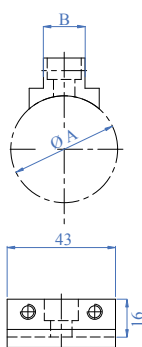


2 side fixing plates
1 set of one-layer rubbers for glass
1 set of two-layer rubbers for glass
4 M6 screws

AISI304	AISI316	GLASS THICKNESS
E0099100	E0099	Adjustable

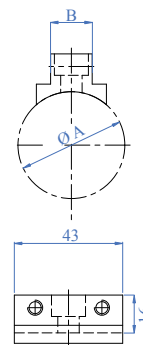


ADAPTORS FOR SAFETY GLASS



Adaptors to combine with side plates
Stainless steel safety pin included

AISI316	FOR TUBE A	GLASS THICKNESS B
E99P16	Flat face	16.76 - 17.52mm
E9942P16	Ø 42.4mm	16.76 - 17.52mm
E99P20	Flat face	20.76 - 21.52mm
E9942P20	Ø 42.4mm	20.76 - 21.52mm



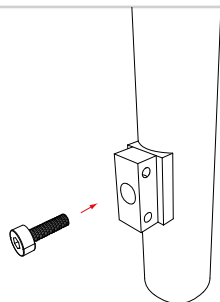
Adaptors to combine with side plates
Stainless steel safety pin included

AISI316	FOR TUBE A	GLASS THICKNESS B
E99P8	Flat face	8 - 8.76mm
E9933P8	Ø 33.7mm	8 - 8.76mm
E9942P8	Ø 42.4mm	8 - 8.76mm
E9950P8	Ø 50.8mm	8 - 8.76mm
E99P10	Flat face	10 - 10.76mm
E9933P10	Ø 33.7mm	10 - 10.76mm
E9942P10	Ø 42.4mm	10 - 10.76mm
E99P12	Flat face	12 - 12.76mm
E9933P12	Ø 33.7mm	12 - 12.76mm
E9942P12	Ø 42.4mm	12 - 12.76mm
E9950P12	Ø 50.8mm	12 - 12.76mm

THE GLASS CLAMP INSTALLATION

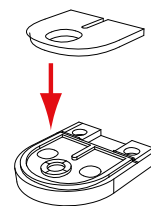
1

Fix the chosen adaptor to the tube with the screw



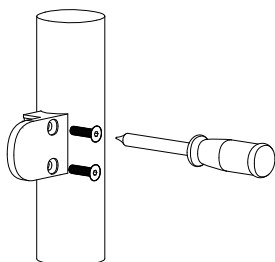
2

Put the rubbers of the required thickness in the appropriate position



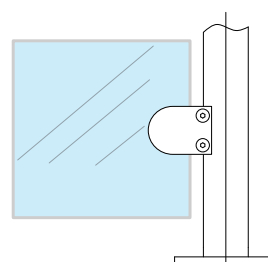
3

Fix one of the two plates to the chosen adaptor



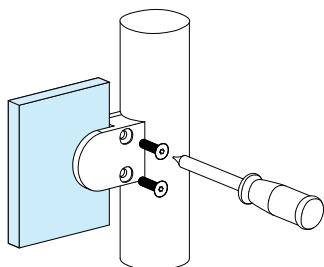
4

Lean the glass against the support



5

Then fix the second plate



WARNING

Please retain this brochure particularly the installation manual. Read the instruction manual carefully before assembling and installing the component parts. Always follow the legislation appropriate to the country of installation and for special projects please check local and national building regulations. Fit all parts as indicated in the relevant installation manual. Do not fit or use any products if you have doubts concerning its fitting. Do not use or install the products if you are missing any component pieces. In such cases, please contact your local Service Centre.

CHECKING AND MAINTENANCE

The fitting of any installation must be carried out by skilled workers, following instructions contained in the technical sheets supplied. Regular, periodical maintenance and checking are needed in order to gain and maintain the functionality and efficiency of any installation. Again, inspection and maintenance should only be carried out by competent and skilled workers.

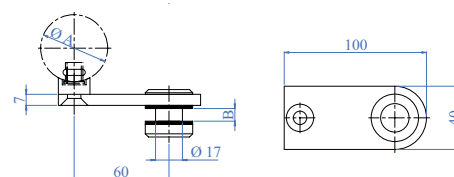
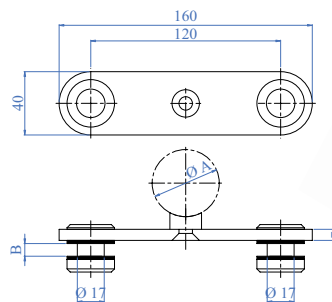
We therefore suggest using only installers recommended by the manufacturer. Failure to do so will result in Aalco refusing all responsibility.

CLEANING INSTRUCTIONS

The use of stainless steel metallic parts guarantees the resistance to different atmospheric conditions. Do not use acids, alkaline solutions, abrasives or corrosive agents to clean the railings.



GLASS CLAMPS - SPIDER FOR TUBES



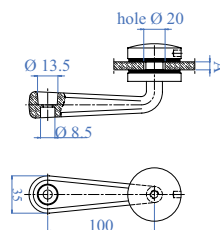
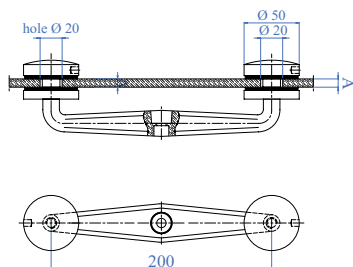
4 pieces: one arm, 2 round clamps for glass and one tube adaptor

AISI304	AISI316	FOR TUBE A	GLASS THICKNESS B
E008910	E008901316	Ø 33.7mm	from 8.76 to 13.52mm
E008920	E008920316	Ø 42.4mm	from 8.76 to 13.52mm
E008930	E008930316	Flat face	from 8.76 to 13.52mm

3 pieces: one arm, 1 round clamp for glass and one tube adaptor

AISI304	AISI316	FOR TUBE A	GLASS THICKNESS B
E008950	E008950316	Ø 33.7mm	from 8.76 to 13.52mm
E008960	E008960316	Ø 42.4mm	from 8.76 to 13.52mm
E008970	E008970316	Flat face	from 8.76 to 13.52mm





TO ANCHOR THESE PRODUCTS USE THESE
ARTICLE NUMBERS:

E00882, E00883 AISI 304
E00883316 AISI 316

3 pieces: one arm with hole and 2 round clamps for glass

AISI304	AISI316	FOR GLASS A
E00880	E00880316	from 8.76 to 13.52mm

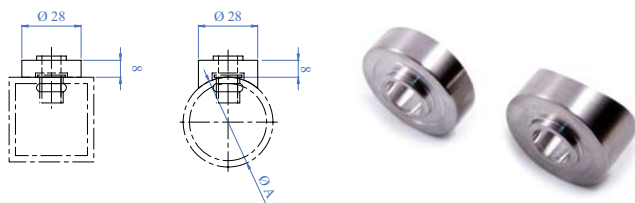
TO ANCHOR THESE PRODUCTS USE THESE
ARTICLE NUMBERS:

E00882, E00883 AISI 304
E00883316 AISI 316

2 pieces: one arm with hole and one round clamp for glass

AISI304	AISI316	FOR GLASS A
E00881	E00881316	from 8.76 to 13.52mm

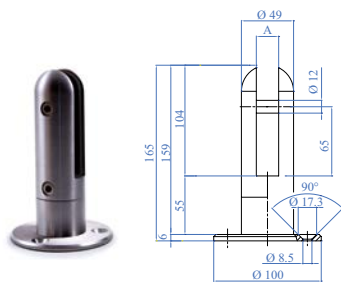
SPIDER ADAPTORS



AISI304	AISI316	FOR TUBE A
E00882	-	Ø 42.4mm
E00883	E00883316	Flat face



GLASS CLAMPS FOR GROUND ANCHORAGE



2 pieces: anchor flange \varnothing 100mm and 3 countersunk holes and glass clamp with 165mm

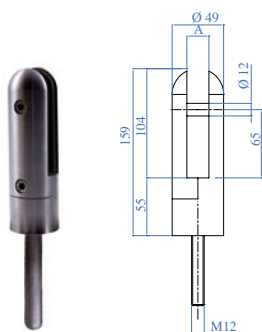


2 pieces: anchor flange 100mm with 4 holes and glass clamp with 186mm

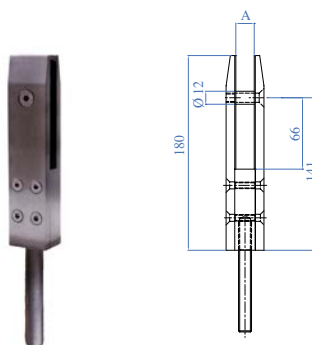


AISI304	AISI316	GLASS THICKNESS A
E2000500	E2000600	12 and 17.52mm

AISI304	AISI316	GLASS THICKNESS A
E2100500	E2100600	12 and 17.52mm



2 pieces: glass support 159mm high and M12 threaded bar x L 120mm



2 pieces: glass support 180mm high and M12 threaded bar x L 120mm



AISI304	AISI316	GLASS THICKNESS A
E2000100	E2000200	12 and 17.52mm

AISI304	AISI316	GLASS THICKNESS A
E2100100	E2100200	12 and 17.52mm





Adjustable Fixing Points

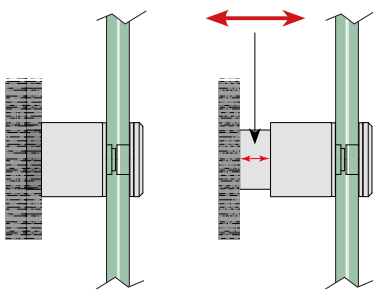
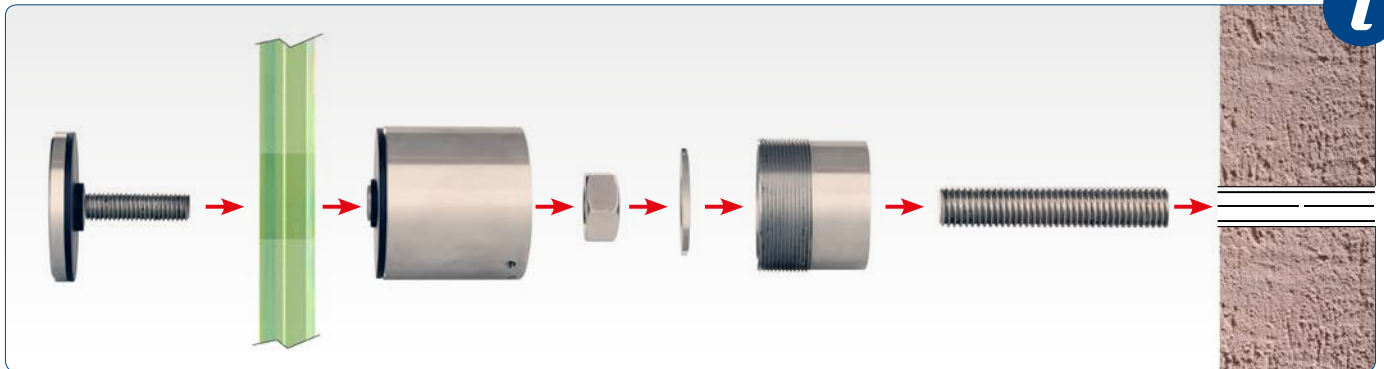
New ADJUSTABLE fixing system for balustrades and much more.

This innovative fixing system for glass gives total control of the adjustment of the sheets, making it easier, even on irregular walls.

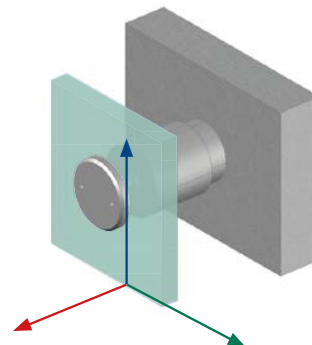
EN
12600

CE

APPROVED
NTC 2008



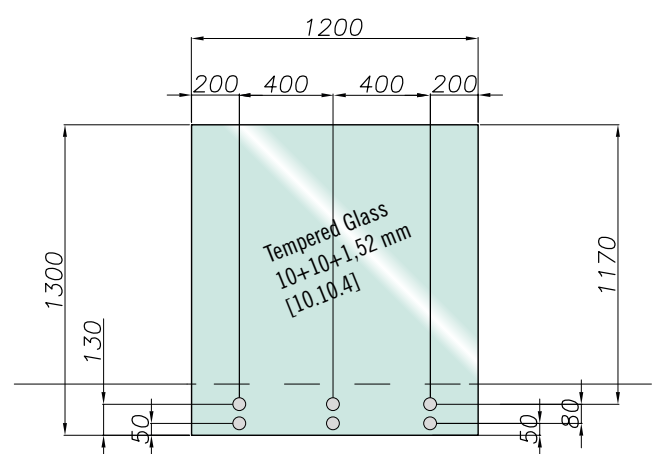
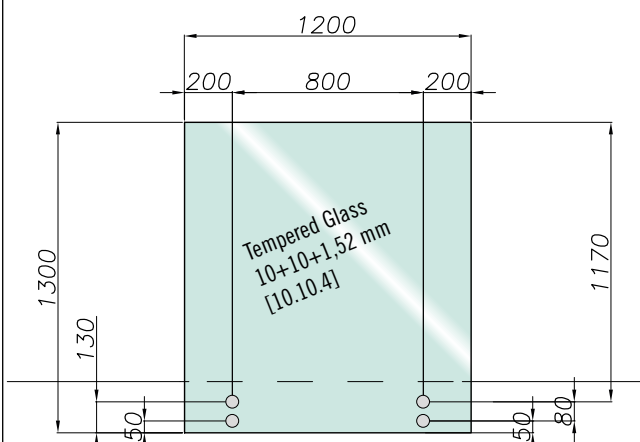
12mm depth adjustability
of the glass sheet

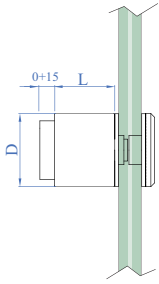


360° adjustability
of the glass sheet

Fixing Point Ø 50mm

Fixing Point Ø 50mm



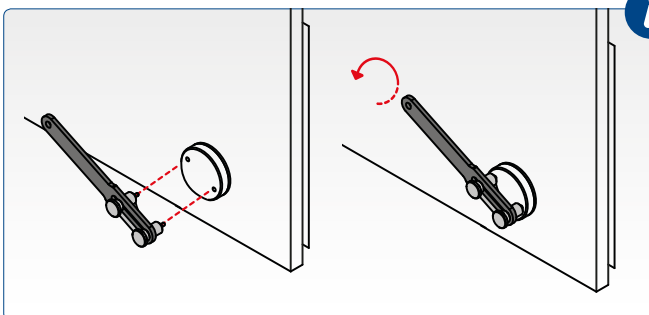


AISI304	LENGTH L	DIAMETER D	GLASS THICKNESS
E620075	45mm	40mm	from 12.76 to 15mm
E620080	45mm	50mm	from 16.76 to 21.52mm
E620085	45mm	60mm	from 22 to 25.52mm

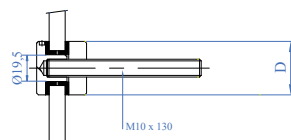
AISI316	LENGTH L	DIAMETER D	GLASS THICKNESS
E640075	45mm	40mm	from 12.76 to 15mm
E640080	45mm	50mm	from 16.76 to 21.52mm
E640085	45mm	60mm	from 22 to 25.52mm

Adjustable wrench to tighten rods and suspended steps

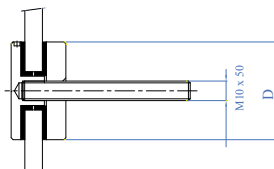
Art. no.
E40695



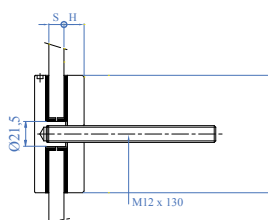
GLASS CLAMPS - ADAPTORS



AISI304	AISI316	H	DIAMETER D	GLASS THICKNESS
E40930304	E40930	10mm	30mm	8 -16.76mm



AISI304	AISI316	H	DIAMETER D	GLASS THICKNESS
E40940304	E40940	10mm	50mm	8 -16.76mm



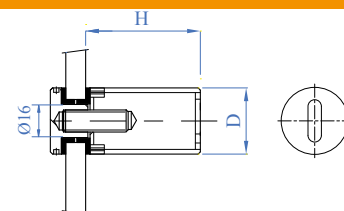
AISI316	H	DIAMETER D	GLASS THICKNESS S
E40960	10mm	60mm	8 -16.76mm

ADAPTOR FOR WOOD

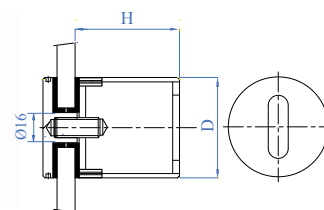
Article E40999 makes installation of the glass supports onto wood very easy.
The part is installed in place of the M10 threaded rod



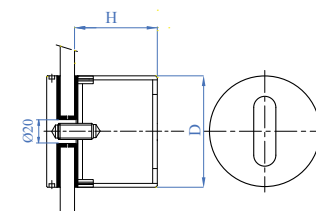
AISI304	METRIC THREAD	WOOD THREAD	LENGTH
E40999	M10	11	100mm



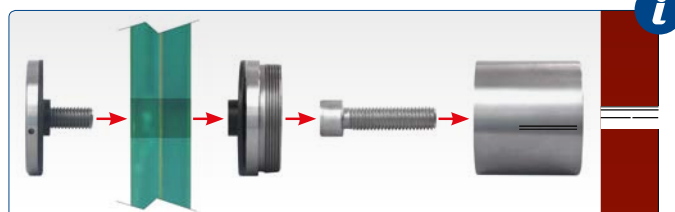
AISI304	AISI316	H	DIAMETER D	GLASS THICKNESS
E40900304	E40900	40mm	30mm	8 -16.76mm
E40901304	E40901	50mm	30mm	8 -16.76mm
E40902304	E40902	60mm	30mm	8 -16.76mm



AISI316	H	DIAMETER D	GLASS THICKNESS
E40910	40mm	50mm	8 -17.52mm
E40911	50mm	50mm	8 -17.52mm
E40912	60mm	50mm	8 -17.52mm

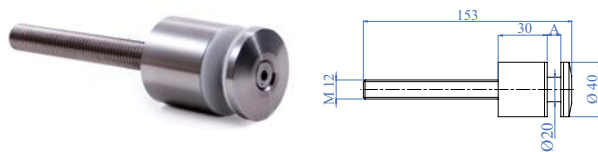


AISI316	H	DIAMETER D	GLASS THICKNESS
E40920	40mm	60mm	8 -17.52mm
E40921	50mm	60mm	8 -17.52mm
E40922	60mm	60mm	8 -17.52mm





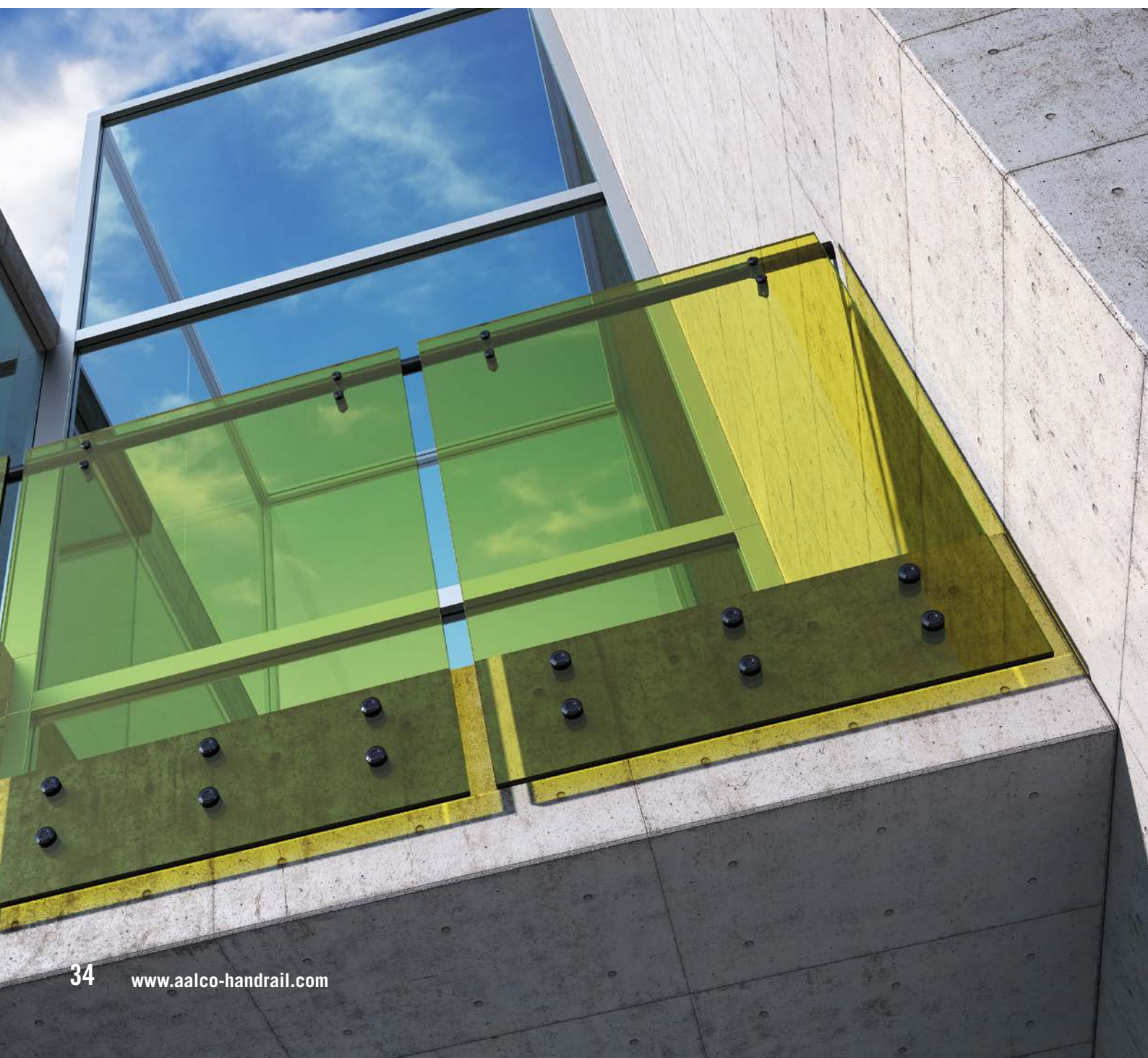
WALL GLASS CLAMPS



Round support complete with threaded screw and glass attachment

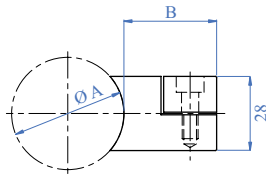


AISI304	AISI316	GLASS THICKNESS A
E2200100	E2200200	from 8 to 12.76mm
E2200300	E2200400	from 16.76 to 21.52mm

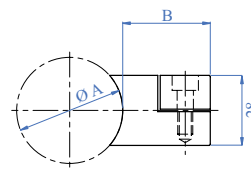








2 pieces with screws for sheet metal 1 - 2mm



2 pieces with screws for sheet metal 1.5 - 4mm

AISI304	AISI316	FOR TUBE A
-	E40500	Ø 33.7mm
E00698	E40510	Ø 42.4mm
-	E40520	Ø 48.3mm
-	E40530	Ø 60.3mm
E00699	E40540	Flat face

AISI304	FOR TUBE A
E72181	Ø 33.7mm
E72182	Ø 42.4mm
E72180	Flat face



Aalco has 18 service centres around the country which offer a reliable and on-time delivery service anywhere in the UK. Each centre holds stock to meet the immediate needs of customers in the local area and this is backed up by bulk stocks held at a central warehouse.

To find out more, ask for a quotation or to get advice on any product selection, please contact your local Aalco service centre.

ABERDEEN

Tel: 01224 854810
Fax: 01224 871982
aberdeen@aalco.co.uk

LEEDS

Tel: 0113 276 3300
Fax: 0113 276 0382
leeds@aalco.co.uk

AYLESBURY

Tel: 01296 461700
Fax: 01296 339923
aylesbury@aalco.co.uk

LIVERPOOL

Tel: 0151 207 3551
Fax: 0151 207 2657
liverpool@aalco.co.uk

BELFAST

Tel: 028 9083 8838
Fax: 028 9083 7837
belfast@aalco.co.uk

MANCHESTER

Tel: 01204 863456
Fax: 01204 863430
manchester@aalco.co.uk

BIRMINGHAM

Tel: 0121 585 3600
Fax: 0121 585 6864
birmingham@aalco.co.uk

NEWCASTLE

Tel: 0191 491 1133
Fax: 0191 491 1177
newcastle@aalco.co.uk

CHEPSTOW

Tel: 01291 638638
Fax: 01291 638600
chepstow@aalco.co.uk

NORWICH

Tel: 01603 787878
Fax: 01603 789999
norwich@aalco.co.uk

DYFED

Tel: 01269 842044
Fax: 01269 845276
dyfed@aalco.co.uk

NOTTINGHAM

Tel: 0115 988 2600
Fax: 0115 988 2636
nottingham@aalco.co.uk

ESSEX

Tel: 01268 884200
Fax: 01268 884220
essex@aalco.co.uk

SOUTHAMPTON

Tel: 023 8087 5200
Fax: 023 8087 5275
southampton@aalco.co.uk

GLASGOW

Tel: 0141 646 3200
Fax: 0141 646 3260
glasgow@aalco.co.uk

STOKE

Tel: 01782 375700
Fax: 01782 375701
stoke@aalco.co.uk

HULL

Tel: 01482 626262
Fax: 01482 626263
hull@aalco.co.uk

SWANLEY

Tel: 01322 610900
Fax: 01322 610910
swanley@aalco.co.uk

Also available in Ireland

DUBLIN

Tel: +353 (0) 1 629 8600
Fax: +353 (0) 1 629 9200
dublin@amari-dublin.com

CORK

Tel: +353 (0) 21 431 0520
Fax: +353 (0) 21 431 0519
cork@amari-cork.com

