

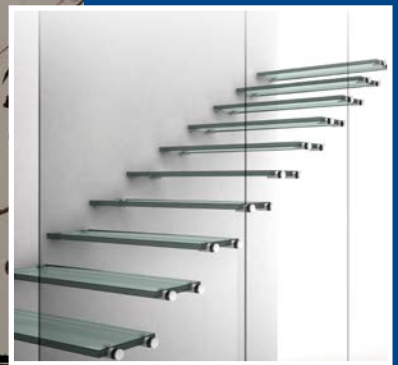
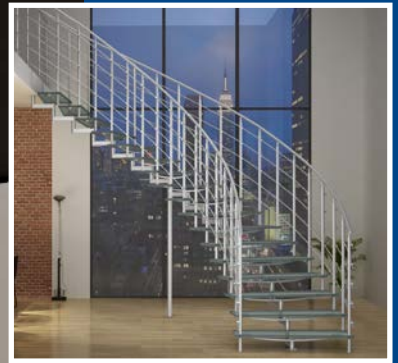
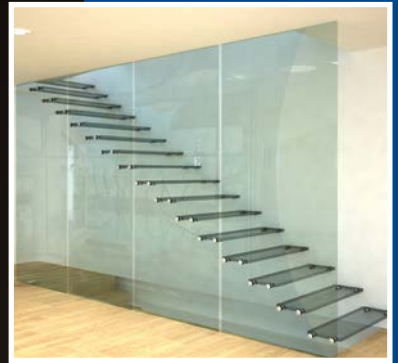
aalco®

ARCHITECTURAL
HANDRAIL
SYSTEMS

www.aalco-handrail.com

AALCO SYSTEMS

GLASS STAIRCASES



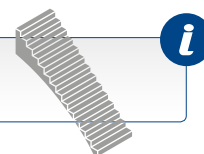
IAM
DESIGN®
INNOVATION ARCHITECTURAL METAL

GLASS AND STAINLESS STEEL STAIRCASES





Requires engineering calculations



SPIRAL

The Glasstree system has been inspired by nature. This is best illustrated in Glasstree Spiral, with its tree-like structure and functional lines which ensure a strong and lasting impression in any environment. The central support is like the trunk of the tree, with the glass steps and their supporting elements branching from it in a modular format to provide the flexibility to construct to a range of different heights. The number of treads and their height can be adjusted through the use of spacers. Glasstree combines maximum structural solidity in a design which is light and airy.

Satin finish

Indoor use

AISI304



AISI304

E022740



Stairway suitable for areas open to the public with low or medium footfall.
Developed for 400Kg/m² design load

WALL

Glasstree Wall is the wall-mounted version of the system. The 'branches' are formed by two stainless steel vertical flat bars joined by pierced cylindrical spacers to create a retaining flat bar for the wall fixing. The modular production concept has been optimised through the basic module of the 'branches' being independent from the fixing module. The glass can be customised, offering both lightness and structural efficiency. For an alternate approach to suit different applications, materials like wood or metal sheet can be employed instead of glass.

Satin finish

Indoor use

AISI304

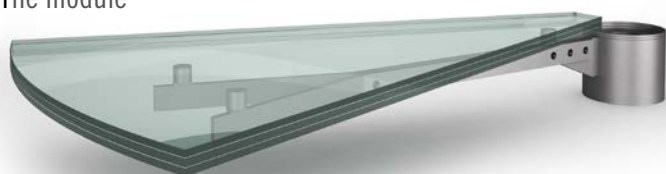


AISI304

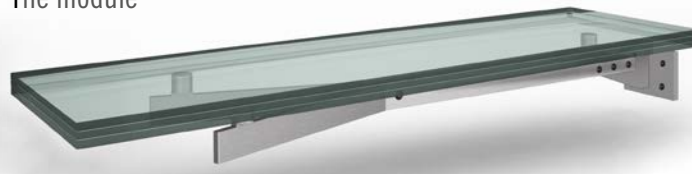
E022750



The module



The module

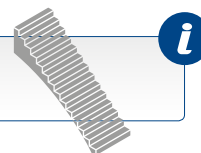




BACBONE



Requires engineering calculations



SINGLE

Backbone has been designed around a common basic module through which both linear and curved structures can be created. The capacity to rotate around the vertical plane, the use of rings to adjust the step tread and a wide range of accessories means this is a very flexible system. The Backbone Single system offers the opportunity to meet the demands of the widest range of applications. The basic repeatable stainless steel module allows the staircase to follow the contours of many different environments.

Satin finish

Indoor use

AISI304

AISI304



E022760



Stairway suitable for areas open to the public with low or medium footfall.
Developed for 400Kg/m² design load

DOUBLE

The Double Backbone system is available to create linear stairways, with or without landings, complemented by railings in both stainless steel and glass. This offers the potential to span greater widths, achieve higher resistance, remove the need in some cases for supporting elements and reduce the dimensions of the glass tread by increasing its support points.

Satin finish

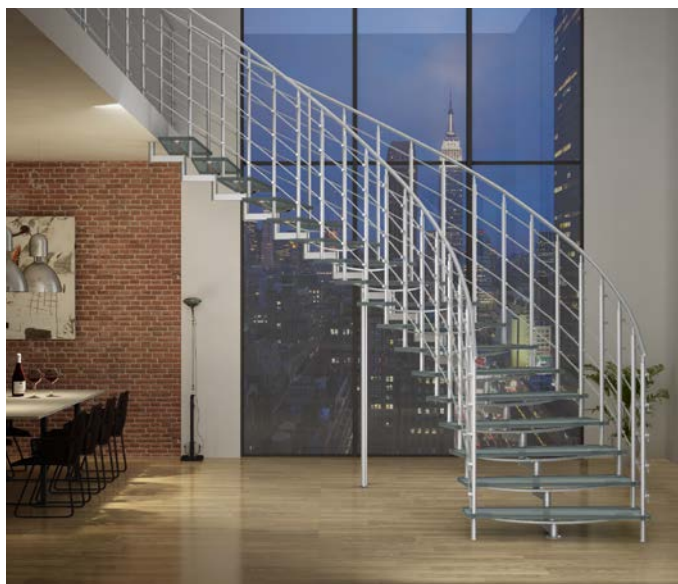
Indoor use

AISI304

AISI304



E022770

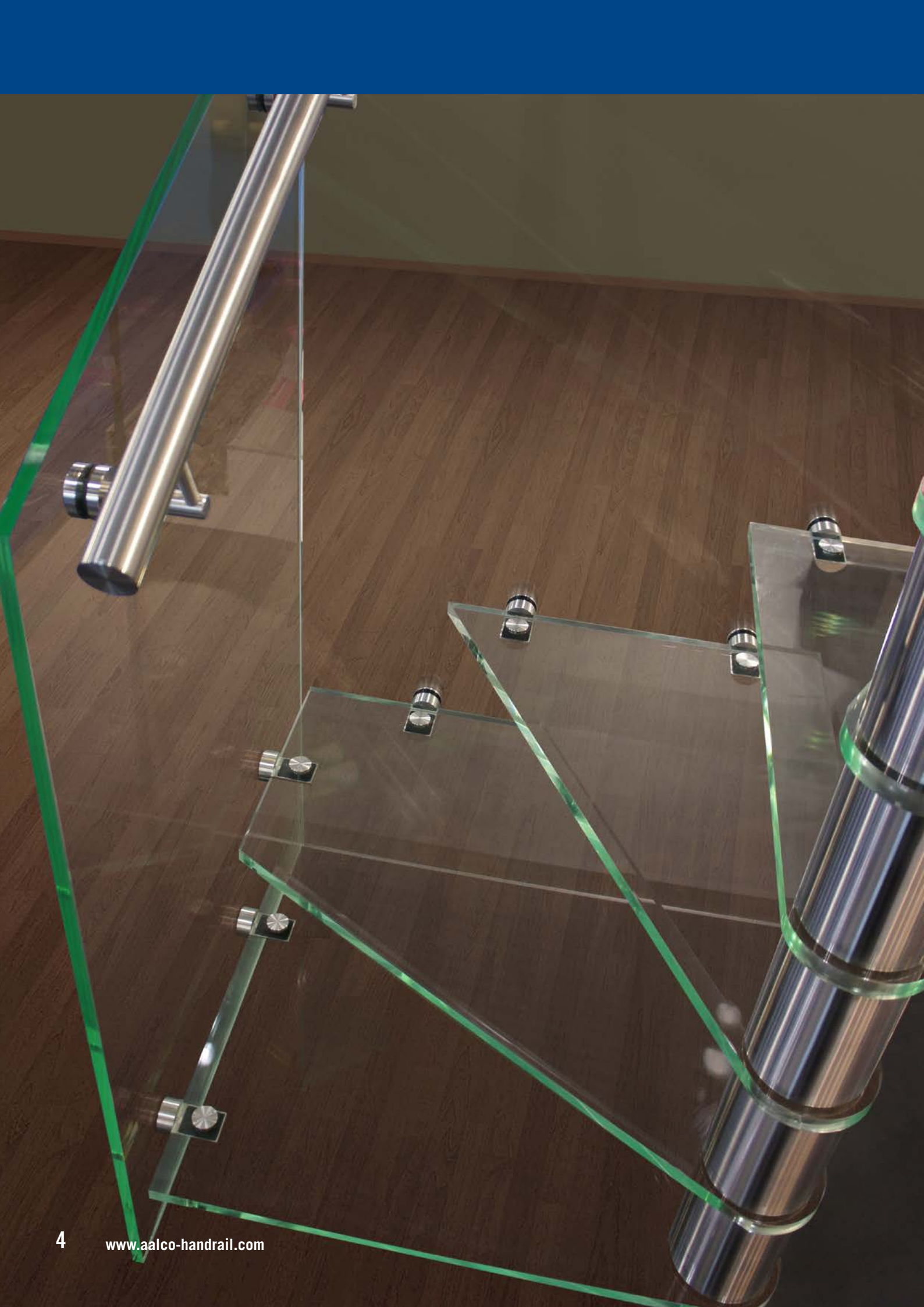


The module



The module

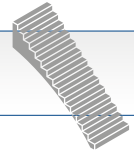




GLASSTEP



Requires engineering calculations



This glass stairway is completely transparent, allowing it to effectively 'disappear' and not detract from the surrounding features of the building. It is based on a minimalist design, with the laminated glass functioning as the structural support for the whole stairway, through a clever anchor system created by the stainless steel elements used to connect the glass. This makes Glasstep very flexible, allowing it to be adjusted for many different situations. Both the tread and the riser of the steps can be completely personalised to suit the specifics of a given installation.

Satin finish

Outdoor use

AISI316



Stairway suitable for areas open to the public with low or medium footfall.
Developed for 400Kg/m² design load



AISI316

E022720

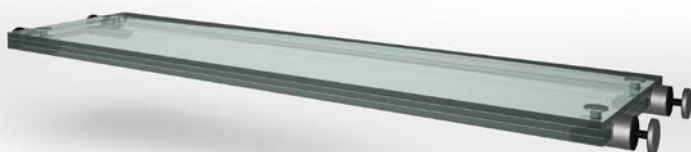


AISI316

E022730



The module



Aalco has 18 service centres around the country which offer a reliable and on-time delivery service anywhere in the UK. Each centre holds stock to meet the immediate needs of customers in the local area and this is backed up by bulk stocks held at a central warehouse.

To find out more, ask for a quotation or to get advice on any product selection, please contact your local Aalco service centre.

ABERDEEN

Tel: 01224 854810
Fax: 01224 871982
aberdeen@aalco.co.uk

LEEDS

Tel: 0113 276 3300
Fax: 0113 276 0382
leeds@aalco.co.uk

AYLESBURY

Tel: 01296 461700
Fax: 01296 339923
aylesbury@aalco.co.uk

LIVERPOOL

Tel: 0151 207 3551
Fax: 0151 207 2657
liverpool@aalco.co.uk

BELFAST

Tel: 028 9083 8838
Fax: 028 9083 7837
belfast@aalco.co.uk

MANCHESTER

Tel: 01204 863456
Fax: 01204 863430
manchester@aalco.co.uk

BIRMINGHAM

Tel: 0121 585 3600
Fax: 0121 585 6864
birmingham@aalco.co.uk

NEWCASTLE

Tel: 0191 491 1133
Fax: 0191 491 1177
newcastle@aalco.co.uk

CHEPSTOW

Tel: 01291 638638
Fax: 01291 638600
chepstow@aalco.co.uk

NORWICH

Tel: 01603 787878
Fax: 01603 789999
norwich@aalco.co.uk

DYFED

Tel: 01269 842044
Fax: 01269 845276
dyfed@aalco.co.uk

NOTTINGHAM

Tel: 0115 988 2600
Fax: 0115 988 2636
nottingham@aalco.co.uk

ESSEX

Tel: 01268 884200
Fax: 01268 884220
essex@aalco.co.uk

SOUTHAMPTON

Tel: 023 8087 5200
Fax: 023 8087 5275
southampton@aalco.co.uk

GLASGOW

Tel: 0141 646 3200
Fax: 0141 646 3260
glasgow@aalco.co.uk

STOKE

Tel: 01782 375700
Fax: 01782 375701
stoke@aalco.co.uk

HULL

Tel: 01482 626262
Fax: 01482 626263
hull@aalco.co.uk

SWANLEY

Tel: 01322 610900
Fax: 01322 610910
swanley@aalco.co.uk

Also available in Ireland

DUBLIN

Tel: +353 (0) 1 629 8600
Fax: +353 (0) 1 629 9200
dublin@amari-dublin.com

CORK

Tel: +353 (0) 21 431 0520
Fax: +353 (0) 21 431 0519
cork@amari-cork.com

