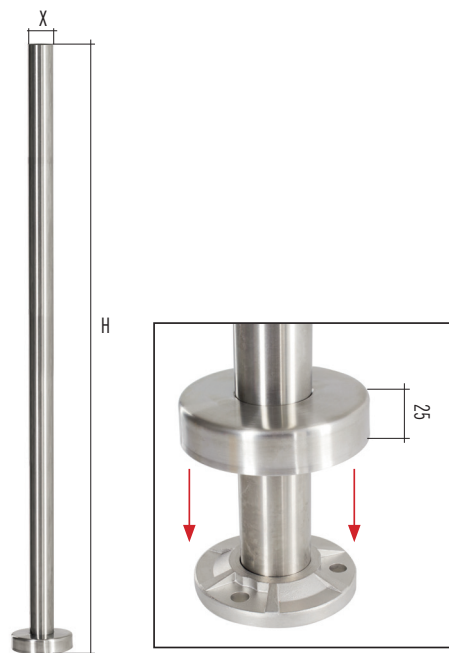
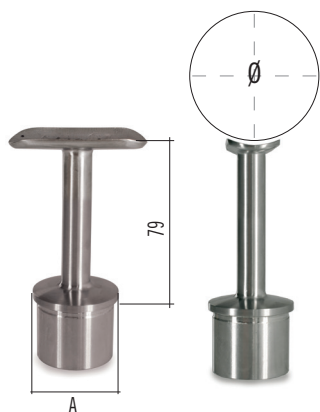


COMPLETE POSTS



AISI316	X	H
E033610014	42.4 x 2.0mm	1000mm
E033610015	42.4 x 2.6mm	1000mm
E033610016	48.3 x 2.0mm	1000mm
E033610017	48.3 x 2.6mm	1000mm

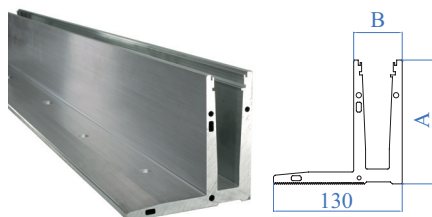
CAST SADDLE



Fixed Handrail support

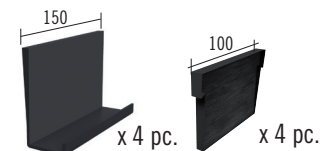
AISI316	For tube A	Ø
E033610009	Ø 42.4 x 2.5mm	Ø 42.4mm
E033610011	Ø 48.3 x 2.0mm	Ø 48.3mm
E033610012	Ø 48.3 x 2.5mm	Ø 42.4mm
E033610013	Ø 48.3 x 2.5mm	Ø 48.3mm

GLASS U 2000 L



ALUMINIUM	A	B	LENGTH
E1800170	125mm	49mm	3000mm

GLASS U WEDGE KIT



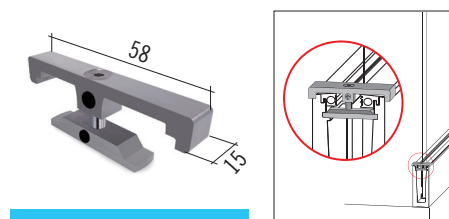
Fixing kit for 1 metre balustrade

PLASTIC	Glass thickness
E1810600	19mm
E1802600	24.76 and 25.52mm
E1803600	31.52mm
E1806600	20.76 - 21.52mm

GLASS U PRECISION BASE

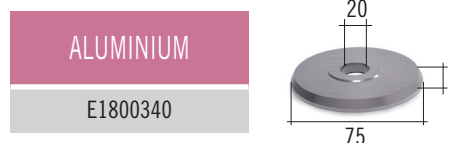


GLASS U BRIDGE CLIP

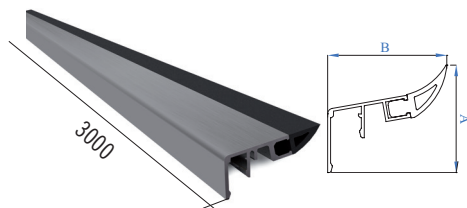


AISI316
E1800240

GLASS U DISC



GLASS U PRECISION SEAL

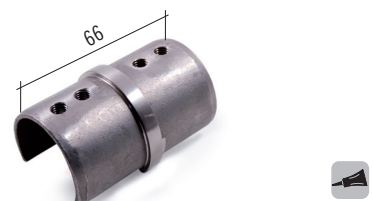


ALUMINIUM	RUBBER	A	B
E1800630		29mm	32.5mm

GLASS U PRECISION WEDGE



STRAIGHT CONNECTOR SLOTTED



AISI316	FOR TUBE A
E1200100	Ø 42.4 x 1.5mm

ADJUSTABLE SADDLE



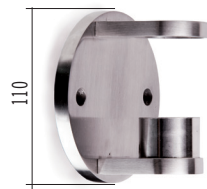
AISI303	AISI316	For tube
-	E030/S316/26	Ø 42.4 x 2.5mm

ADJUSTABLE ELBOW



AISI316	For tube	A
E4463	Ø 48.3 x 2.5 mm	59mm

SIDE MOUNTED BASE



AISI316	For tube
E40350/26	Ø 42.4 x 2.5mm

GLASS CLAMPS



AISI304 SATIN	For tube Dia.	R
E 1 14 042 00	42.4 mm	21.2mm

90° BEND



AISI316	For tube	A
E4472	Ø 48.3 x 2.0mm	74mm

INDOOR FLOOR BASE

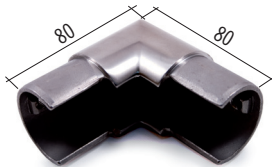


AISI316	Dimensions	For tube
E0214316	Ø 100 x 6mm and 4 holes Ø 11mm	Ø 48.3 x 2.0mm



AISI304 SATIN	For tube Dia.	R
E 1 15 042 00	42.4mm	21.2mm
E 1 15 048 00	48.3mm	24.2mm

90° ANGLE VERTICAL



AISI316	Tube
E1500110	Ø 48.3 x 1.5mm

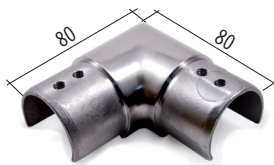
GLASS CLAMPS



AISI304 SATIN	For tube Dia.
E 1 11 042 00	42.4mm

AISI316 SATIN	For tube Dia.	R
E 2 15 042 00	42.4mm	21.2mm

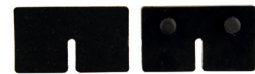
90° ANGLE HORIZONTAL



AISI316	Tube
E1400110	Ø 48.3 x 1.5mm

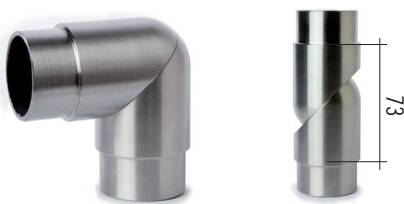
AISI316 SATIN	For tube Dia.
E 2 11 042 00	42.4mm

GLASS CLAMP RUBBERS



RUBBER	MOD.	Nr. Set	Nr. per Set	Glass thick.
R 11 06	11	4	2 pcs.	6mm

90° CURVED ELBOW



AISI316	For tube
E5588/26	Ø 48.3 x 2.5mm



AISI304 SATIN	For tube Dia.
E 1 13 000 00	Flat surface

AISI316 SATIN	For tube Dia.	R
E 2 13 000 00	Flat surface	-
E 2 13 048 00	48.3mm	24.15mm

GLASS CLAMP RUBBERS



RUBBER	MOD.	Nr. Set	Nr. per Set	Glass thick.
R 15 08	15	4	2 pcs.	8mm
R 15 12	15	4	2 pcs.	12mm

SIDE MOUNTING



AISI316	For tube
E406/26	Ø 42.4 x 2.5mm
E407/26	Ø 48.3 x 2.5mm

END CAP SLOTTED



AISI316	Tube
E1100110	Ø 48.3 x 1.5mm

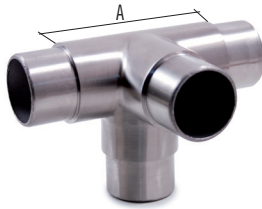
CLEANING SPRAY



Degreaser spray
Spray for cleaning
all metal surfaces

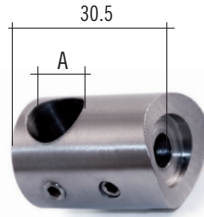
CODE NO.
E4051

4 WAY T CONNECTOR



AISI316	For tube	A
E2035/26	Ø 42.4 x 2.5 mm	89mm

CROSS BAR HOLDER



AISI316	For tube	Hole A
E4040	Ø 42.4mm	Ø 14.2mm through
E4041	Ø 48.3mm	Ø 12.2mm through
E4044	Flat face	Ø 12.2mm through

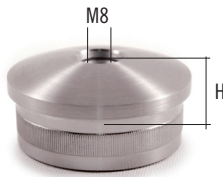
PROTECTION SPRAY



Leaves a thin antistatic and
water-repellent coat on the
treated metallic surface. It
is recommended on finished
products

CODE NO.
E4052

ROUNDED, HOLLOW END CAPS FOR TUBE



AISI316	For tube	H
E4130/26	Ø 42.4 x 2.5mm	7mm
E4136/26	Ø 48.3 x 2.5mm	7mm

CROSS CONNECTOR



AISI316	For tube	A
E2045/26	Ø 42.4 x 2.5mm	87mm
E2047/26	Ø 48.3 x 2.5mm	91mm

SEMI-SPHERICAL END CAPS



Hollow, satin finish



AISI316	For tube
E465/26	Ø 42.4 x 2.5mm