

NEW

05 CLEAR VISTA FRENCH BALCONY

FRENCH BALCONY SYSTEM - CLEAR VISTA	66
REGULATIONS	67
APPLICATION 1 - MASONRY FITTING	68 - 69
APPLICATION 2 - WINDOW FRAME FITTING	70 - 71

05 CLEAR VISTA FRENCH BALCONY



RUBBER MALLET TO BE USED



PRODUCT TO BE GLUED WITH E4054



ASSEMBLY WITH ALLEN KEY



PRODUCT TO BE WELDED



ANTI-CLIMB PRODUCT

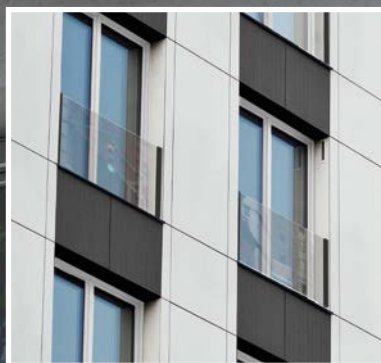


SUPER STRONG, HIGH RESISTANT PRODUCT



NEW

The Clear Vista French Balcony is designed to be in harmony with the environment and the surrounding built architecture. It ensures protection for the windows, without blocking the light, impeding the view or compromising safety.



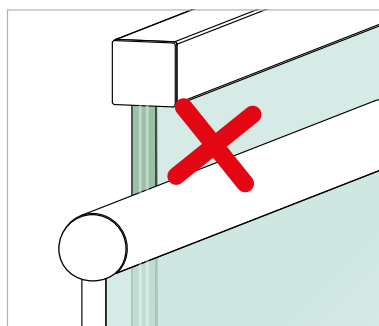
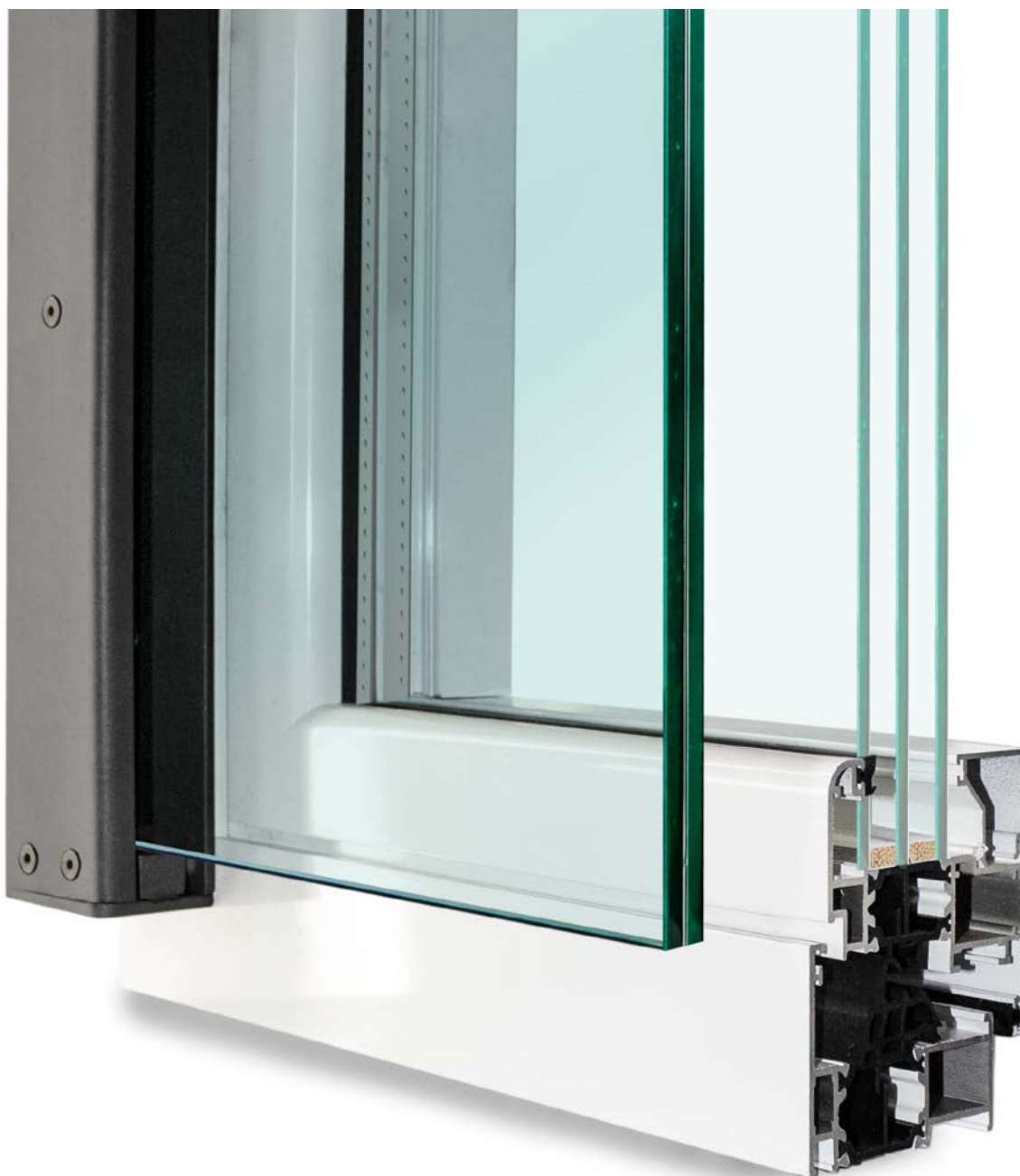
05 CLEAR VISTA FRENCH BALCONY

NEW

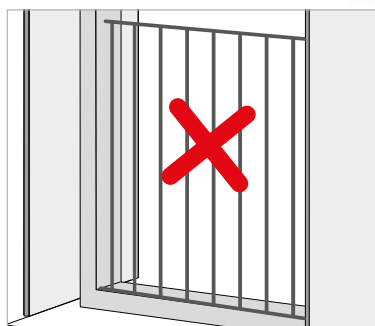
FRENCH BALCONY SYSTEM

CLEARVISTA

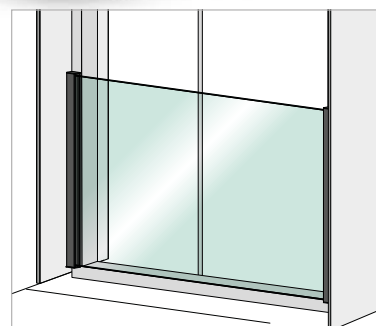
05 CLEAR VISTA FRENCH BALCONY



No need for handrails.



Unlike balconies with vertical rails, the view remains uninterrupted. The glass system's structure allows the Clear Vista system to ensure an unsurpassed level of transparency.

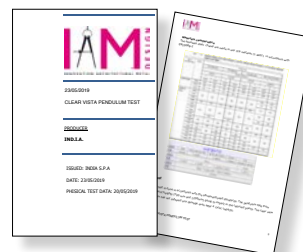


Tested up to 1800mm.

FRENCH BALCONY SYSTEM - CLEAR VISTA REGULATIONS



TEST CERTIFICATES AVAILABLE
ON REQUEST



TEST RESULTS

The test is done in accordance with the aforementioned standards. The pendulum falls from different heights (700mm and 1200mm) and impacts at the required points. The Clear Vista system suffered no damage, even after 4 consecutive impacts.

Type A

Numerous cracks appear forming separate fragments with sharp corners, some of which are typical of breakage of annealed glass.

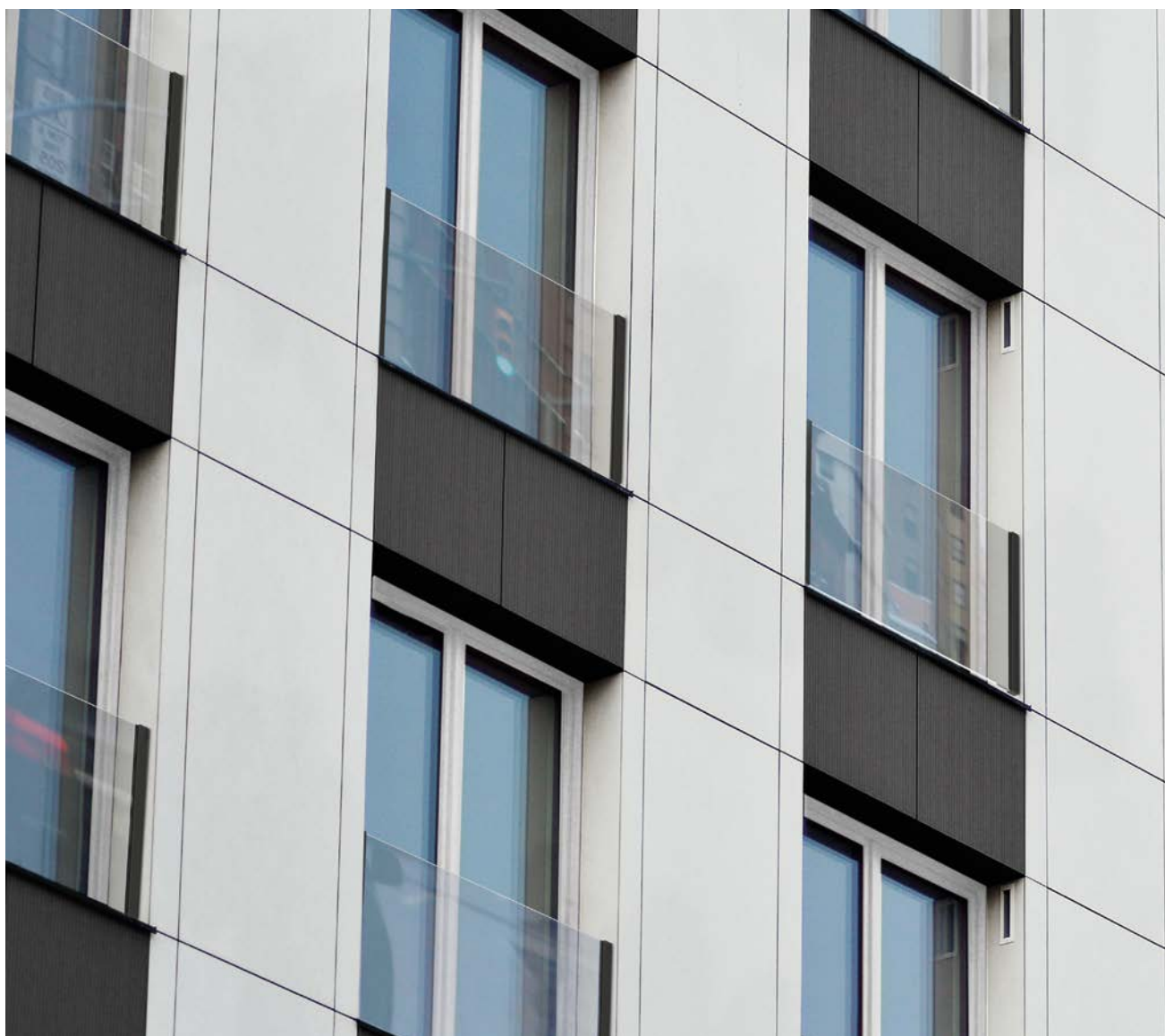
Type B

Numerous cracks appear but fragments remain united and not separate [typical breakage of laminated glass].

Type C

The test piece disintegrates, producing a high number of small particles which are relatively innocuous [breakage typical of tempered glass].

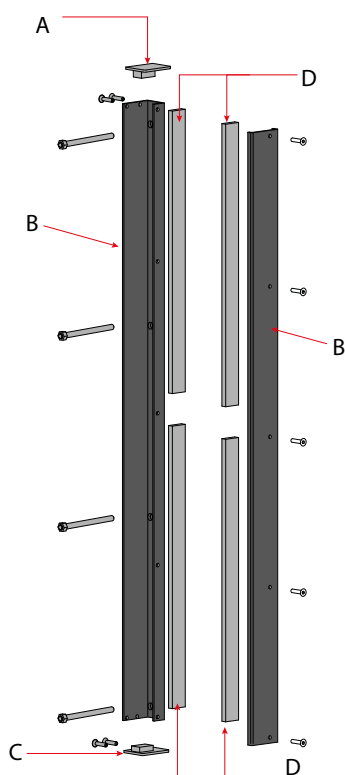
Height fall (mm)	Behaviour	Mode of failure
700	Break	
	YES	NO
		X
1200	Break	
	YES	NO
	X	
1B1 Classified		



NEW

05 CLEAR VISTA FRENCH BALCONY

CLEAR VISTA APPLICATION 1 - MASONRY FITTING



COMPONENTS INCLUDED IN THE KIT

- A)** 2 upper closures
- B)** 4 customisable profiles in materials and finishings required
- C)** 2 lower closures
- D)** 8 rubber strips to be applied on the profiles which will be in contact with the glass

Screws and dowels
(purchase separately)



Stainless steel AISI 316

AISI316	GLASS HEIGHT	PROFILE H
E2200700	900mm	930mm
E2200710	1000mm	1030mm
E2200720	1100mm	1130mm



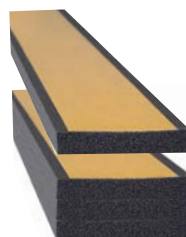
Matt black steel galvanised

IRON ZINC	GLASS HEIGHT	PROFILE H
V2200700	900mm	930mm
V2200710	1000mm	1030mm
V2200720	1100mm	1130mm



Raw steel

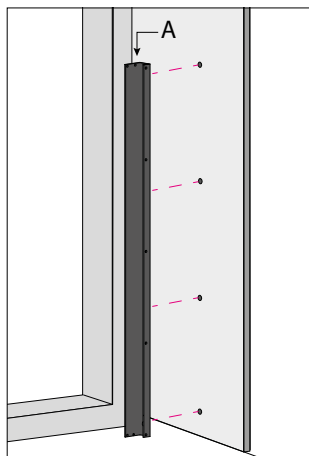
IRON RAW	GLASS HEIGHT	PROFILE H
F2200700	900mm	930mm
F2200710	1000mm	1030mm
F2200720	1100mm	1130mm



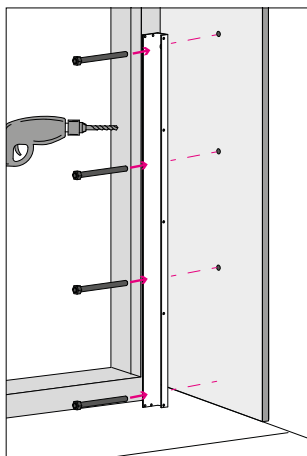
Fastening gasket kit compatible with all profiles

RUBBER	GLASS THICKNESS
E2200640	5+5+PVB
E2200650	6+6+PVB

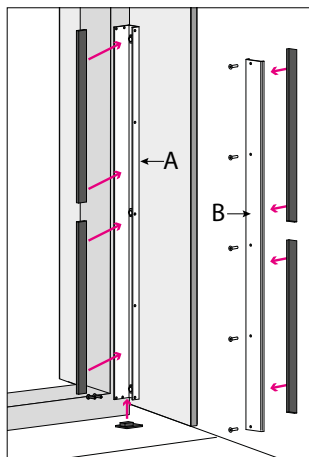
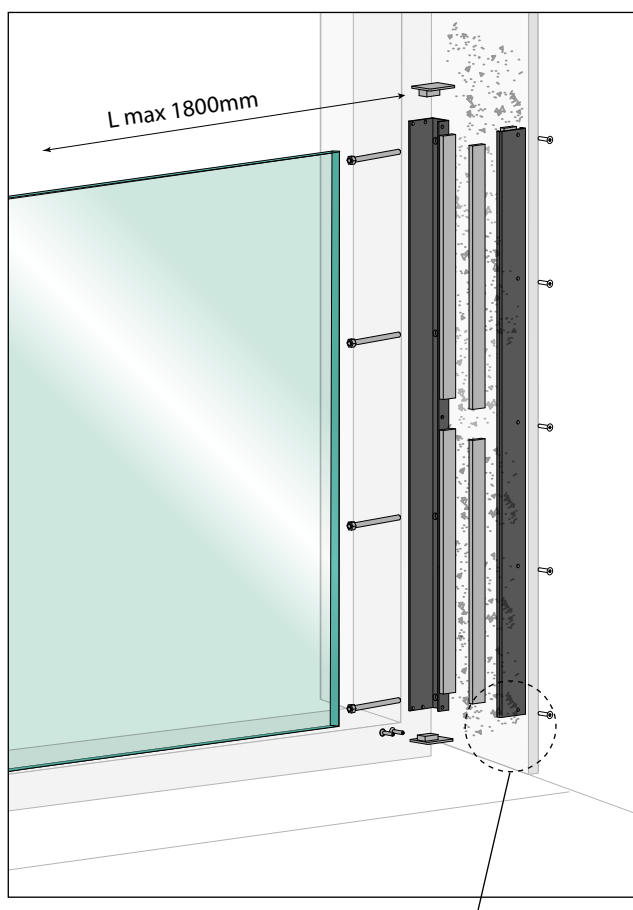
CLEAR VISTA APPLICATION 1 - MASONRY FITTING



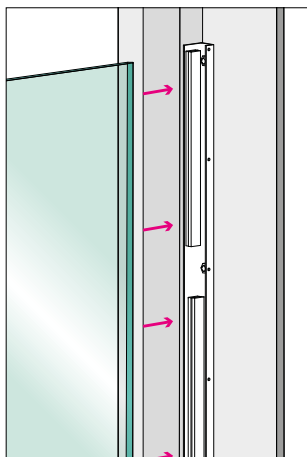
Locate profile **A** inside the masonry door frame and mark the mounting holes.



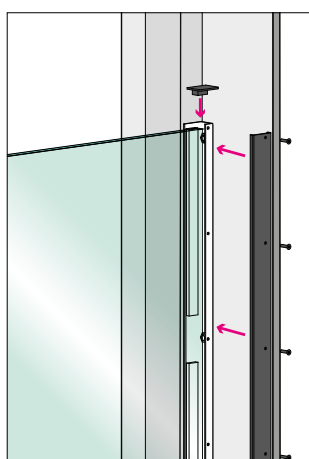
Drill holes in the wall and secure component **A** of the system using the appropriate screws.



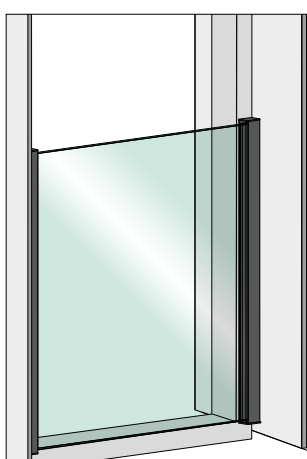
Place the lower fastener. Apply the internal gaskets on profiles **A** and **B**.



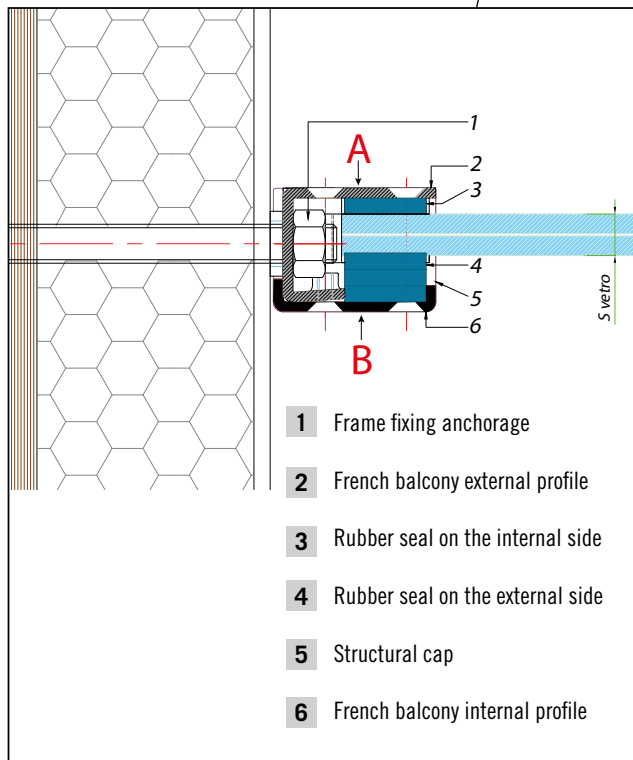
Install the glass.



Attach element **B** to element **A** and insert the upper closure.



Installation completed.

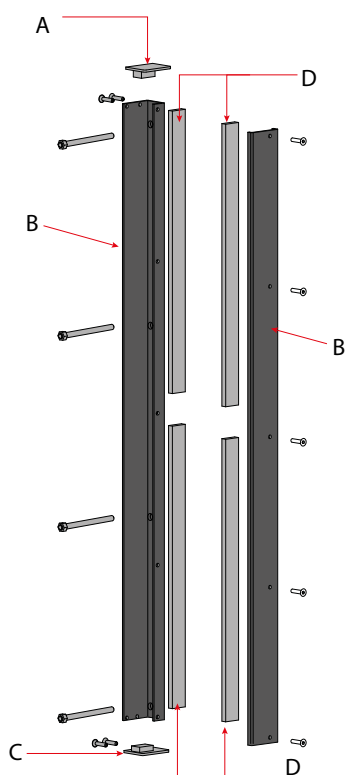


- 1 Frame fixing anchorage
- 2 French balcony external profile
- 3 Rubber seal on the internal side
- 4 Rubber seal on the external side
- 5 Structural cap
- 6 French balcony internal profile

05 CLEAR VISTA APPLICATION 1 - MASONRY FITTING

NEW

CLEAR VISTA APPLICATION 2 - WINDOW FRAME FITTING



COMPONENTS INCLUDED IN THE KIT

- A)** 2 upper closures
- B)** 4 customisable profiles in materials and finishings required
- C)** 2 lower closures
- D)** 8 rubber strips to be applied on the profiles which will be in contact with the glass

Screws and dowels
(purchase separately)



Stainless steel AISI 316

AISI316	GLASS HEIGHT	PROFILE H
E2200600	900mm	936mm
E2200610	1000mm	1036mm
E2200620	1100mm	1136mm



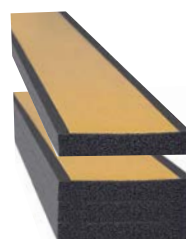
Matt black steel galvanised

IRON ZINC	GLASS HEIGHT	PROFILE H
V2200600	900mm	936mm
V2200610	1000mm	1036mm
V2200620	1100mm	1136mm



Raw steel

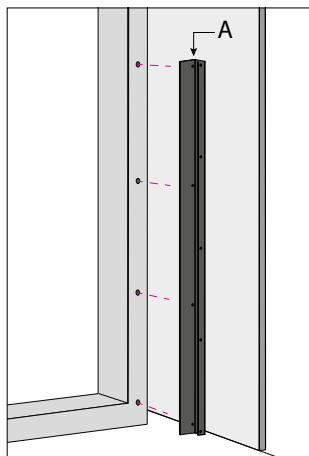
IRON RAW	GLASS HEIGHT	PROFILE H
F2200600	900mm	936mm
F2200610	1000mm	1036mm
F2200620	1100mm	1136mm



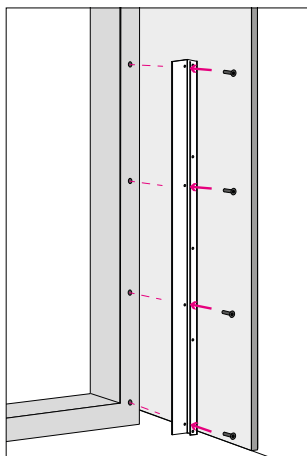
Fastening gasket kit compatible with all profiles

RUBBER	GLASS THICKNESS
E2200640	5+5+PVB
E2200650	6+6+PVB

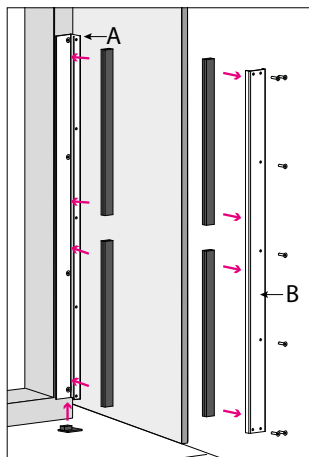
CLEAR VISTA APPLICATION 2 - WINDOW FRAME FITTING



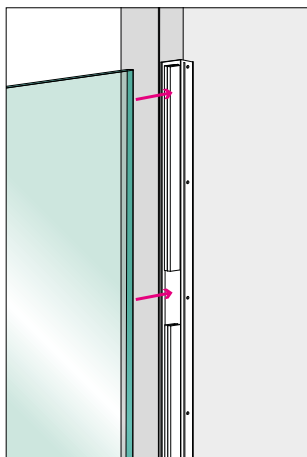
Locate profile **A** inside the window frame and mark the mounting holes.



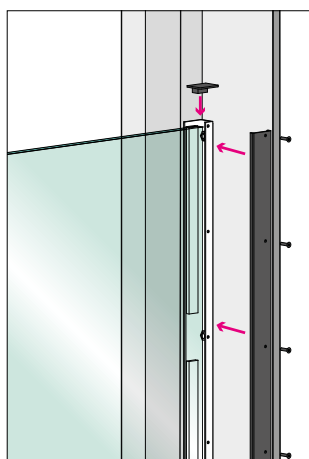
Drill holes in the window frame and secure component **A** of the system using the appropriate screws.



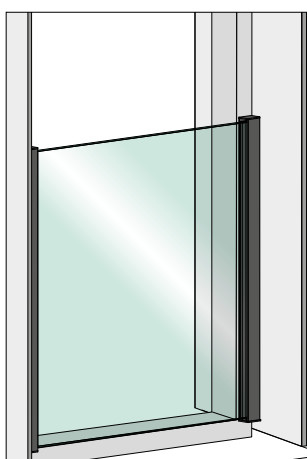
Place the lower fastener. Apply the internal gaskets on profiles **A** and **B**.



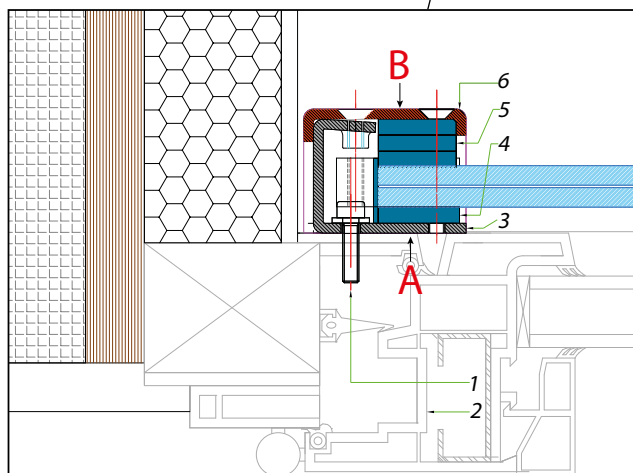
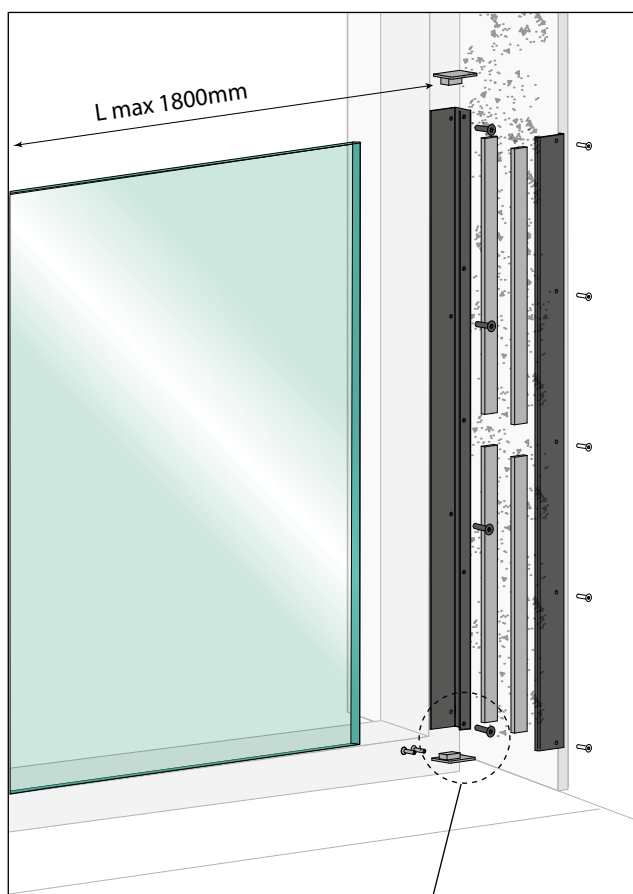
Install the glass.



Attach element **B** to element **A** and insert the upper closure.



Installation completed.



- 1 Frame fixing anchorage
- 2 Frame structure section
- 3 French balcony internal profile
- 4 Rubber seal on the internal side
- 5 Rubber seal on the external side
- 6 French balcony external profile