

07 GLASS CLAMPS & GLASS ADAPTORS

GLASS CLAMPS

HOW TO READ THE GLASS CLAMP CODES	84
GLASS CLAMPS - MODEL 10	85
GLASS CLAMPS - MODEL 11	86
GLASS CLAMPS - MODEL 12	87
GLASS CLAMPS - MODEL 13	88
GLASS CLAMPS - MODEL 14	89
GLASS CLAMPS - MODEL 15	90
GLASS CLAMPS - MODEL 16	91
GLASS CLAMPS - SAFETY PIN	92
GLASS CLAMPS - INSTALLATION	93

GLASS ADAPTORS

ADJUSTABLE FIXING POINTS	94
GLASS WALL CLAMPS	95 - 97

07 GLASS CLAMPS & GLASS ADAPTORS



RUBBER Mallet TO BE USED



PRODUCT TO BE GLUED WITH E4054



ASSEMBLY WITH ALLEN KEY



PRODUCT TO BE WELDED



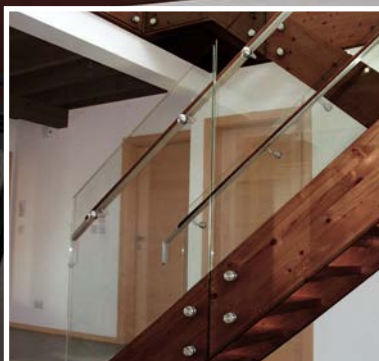
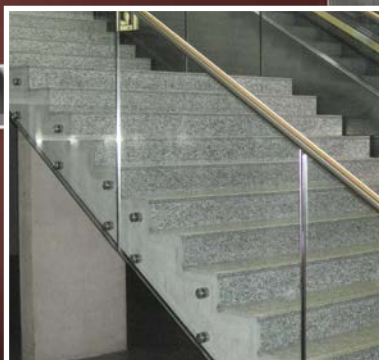
ANTI-CLIMB PRODUCT



SUPER STRONG, HIGH RESISTANT PRODUCT



Aalco glass clamps are available in a wide range of different sizes and shapes, with either a flat or radial base, to ensure there is an option to suit numerous applications, whatever the design. Materials available include AISI 316 and AISI 304 stainless steels, Zamac and, on request, mirror polish finish in grade 316. Different glass thicknesses are accommodated through the provision of separate specifically sized rubbers. The modular approach has been designed to allow a combination of different features to tailor the handrail to the requirements of a given application. This modularity is reflected in a product coding system which enables easy identification of a glass clamp's specific features. In addition, we also offer a wide range of glass adaptors.



07 GLASS CLAMPS & GLASS ADAPTORS

GLASS CLAMPS - HOW TO READ THE GLASS CLAMP CODES



E 1 10 042 00 EXAMPLE

Finishes	Material	Model	Anchor surface	Rubber
E Satin Finish	1 AISI 304	10 40 x 50 x 24mm Round	000 Flat Surface	00 Without rubber
X Mirror Polished	2 AISI 316	11 45 x 45 x 28mm Square	033 Ø 33.7mm	
J Unpolished	3 Zamac/ Aluminium	12 45 x 63 x 28mm Round	042 Ø 42.4mm	
		13 70 x 55 x 40mm Square - With side stopper	048 Ø 48.3mm	
		14 45 x 63 x 30mm Round	050 Ø 50.8mm	
		15 55 x 55 x 35mm Square - With side stopper		
		16 40 x 50 x 28mm Round		

AISI 304 AISI 316 STAINLESS STEEL FINISHES



Satin Finish



Mirror Polished

ZAMAC FINISHES



Unpolished



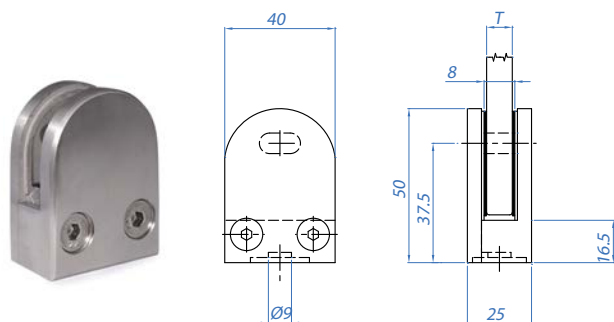
Satin Finish



Mirror Polished

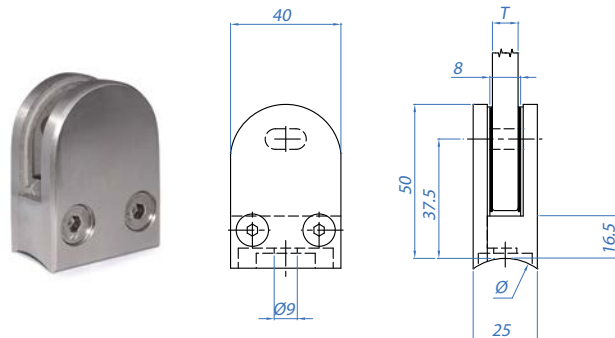
GLASS CLAMPS - MODEL 10

GLASS CLAMPS, FLAT BASE



AISI304					FINISH	FOR TUBE Ø	Box
E	1	10	000	00	Satin	Flat surface	4 pcs.
AISI316					FINISH	FOR TUBE Ø	Box
E	2	10	000	00	Satin	Flat surface	4 pcs.
AISI316					FINISH	FOR TUBE Ø	Box
X	2	10	000	00	Mirror	Flat surface	4 pcs.

GLASS CLAMPS, RADIAL BASE



AISI304					FINISH	FOR TUBE Ø	Box
E	1	10	033	00	Satin	33.7mm	4 pcs.
E	1	10	042	00	Satin	42.4mm	4 pcs.
AISI316					FINISH	FOR TUBE Ø	Box
E	2	10	033	00	Satin	33.7mm	4 pcs.
E	2	10	042	00	Satin	42.4mm	4 pcs.
AISI316					FINISH	FOR TUBE Ø	Box
X	2	10	033	00	Mirror	33.7mm	4 pcs.
X	2	10	042	00	Mirror	42.4mm	4 pcs.

Glass clamps are supplied without rubbers in boxes of 4

RUBBER



Monolithic glass



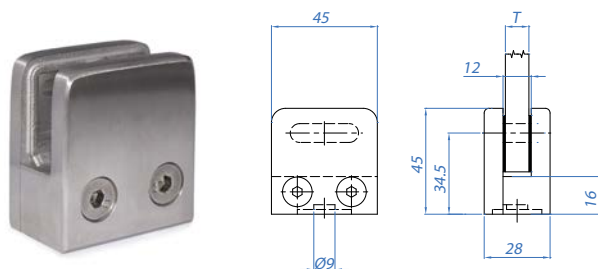
Laminated glass

RUBBER	MOD.	GLASS THICKNESS T	NO. SET	NO. PER SET
R 10 06	10	6mm	4	2 pcs.
R 10 08	10	8mm	4	2 pcs.

RUBBER	MOD.	GLASS THICKNESS T	NO. SET	NO. PER SET
R 10 07	10	6.76mm	4	2 pcs.

GLASS CLAMPS - MODEL 11

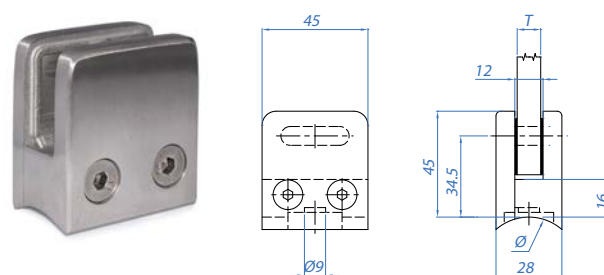
GLASS CLAMPS, FLAT BASE



AISI304	FINISH	FOR TUBE Ø	Box
E 1 11 000 00	Satin	Flat surface	4 pcs.
AISI316	FINISH	FOR TUBE Ø	Box
E 2 11 000 00	Satin	Flat surface	4 pcs.
AISI316	FINISH	FOR TUBE Ø	Box
X 2 11 000 00	Mirror	Flat surface	4 pcs.

Glass clamps are supplied without rubbers in boxes of 4

GLASS CLAMPS, RADIAL BASE



AISI304	FINISH	FOR TUBE Ø	Box
E 1 11 042 00	Satin	42.4mm	4 pcs.
E 1 11 048 00	Satin	48.3mm	4 pcs.
AISI316	FINISH	FOR TUBE Ø	Box
E 2 11 042 00	Satin	42.4mm	4 pcs.
E 2 11 048 00	Satin	48.3mm	4 pcs.
AISI316	FINISH	FOR TUBE Ø	Box
X 2 11 042 00	Mirror	42.4mm	4 pcs.

RUBBER



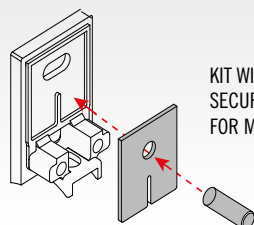
Monolithic glass

RUBBER	MOD.	GLASS THICKNESS T	NO. SET	NO. PER SET
R 11 06	11	6mm	4	2 pcs.
R 11 08	11	8mm	4	2 pcs.
R 11 10	11	10mm	4	2 pcs.



Laminated glass

RUBBER	MOD.	GLASS THICKNESS T	NO. SET	NO. PER SET
R 11 07	11	6.76mm	4	2 pcs.
R 11 09	11	8.76mm	4	2 pcs.
R 11 44	11	9.52mm	4	2 pcs.



KIT WITH RUBBER AND
SECURITY PIN
FOR MODEL 11

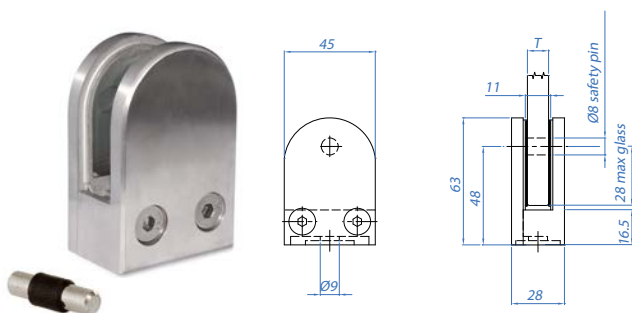


Laminated glass




SAFETY KIT	MOD.	GLASS THICKNESS T	NO. SET	NO. PER SET
R 11 09P	11	8.76mm	4	2 pcs.
R 11 11P	11	10.76mm	4	2 pcs.

GLASS CLAMPS - MODEL 12

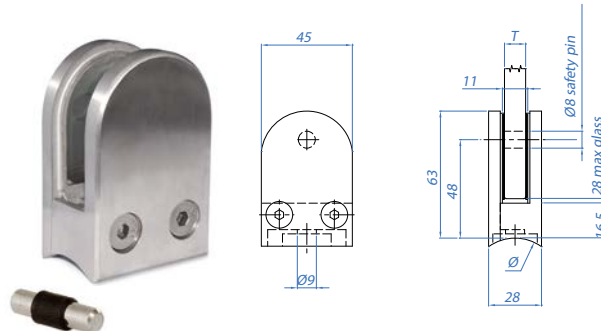
GLASS CLAMPS, FLAT BASE




With locking pin

AISI304					FINISH	FOR TUBE Ø	Box 
E	1	12	000	00	Satin	Flat surface	4 pcs.
AISI316					FINISH	FOR TUBE Ø	Box 
E	2	12	000	00	Satin	Flat surface	4 pcs.
AISI316					FINISH	FOR TUBE Ø	Box 
X	2	12	000	00	Mirror	Flat surface	4 pcs.

GLASS CLAMPS, RADIAL BASE



With locking pin

AISI304						FINISH	FOR TUBE Ø	Box 
E	1	12	042	00	Satin		42.4mm	4 pcs.
E	1	12	048	00	Satin		48.3mm	4 pcs.
AISI316						FINISH	FOR TUBE Ø	Box 
E	2	12	042	00	Satin		42.4mm	4 pcs.
E	2	12	048	00	Satin		48.3mm	4 pcs.
AISI316						FINISH	FOR TUBE Ø	Box 
X	2	12	042	00	Mirror		42.4mm	4 pcs.
X	2	12	048	00	Mirror		48.3mm	4 pcs.

RUBBER



Monolithic glass



Laminated glass

RUBBER	MOD.	GLASS THICKNESS T	NO. SET	NO. PER SET
R 12 06	12	6mm	4	2 pcs.
R 12 08	12	8mm	4	2 pcs.
R 12 10	12	10mm	4	2 pcs.

RUBBER	MOD.	GLASS THICKNESS T	NO. SET	NO. PER SET
R 12 07	12	6.76mm	4	2 pcs.
R 12 09	12	8.76mm	4	2 pcs..
R 12 44	12	9.52mm	4	2 pcs.
R 12 11	12	10.76mm	4	2 pcs.

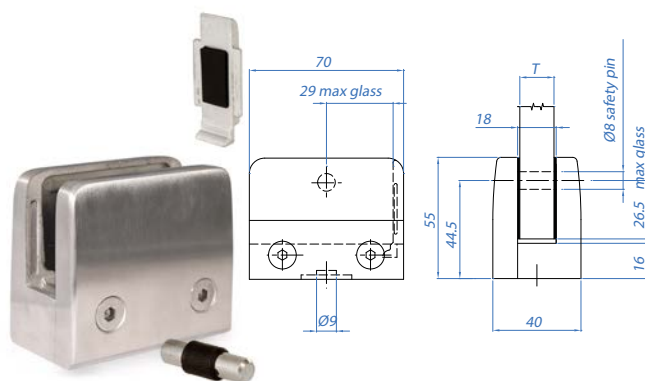


RUBBER	MOD.	THICKNESS	NO. SET	Box
R 12 00	12/14	0.5mm	4	100 pcs.

07 GLASS CLAMPS - MODEL 12

GLASS CLAMPS - MODEL 13

GLASS CLAMPS, FLAT BASE

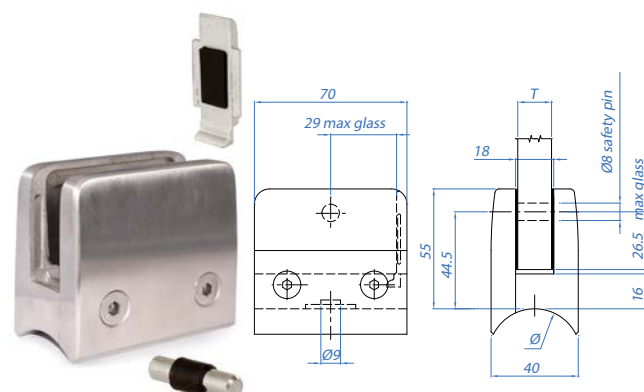


With locking pin

AISI304	FINISH	FOR TUBE Ø	Box
E 1 13 000 00	Satin	Flat surface	4 pcs.
AISI316	FINISH	FOR TUBE Ø	Box
E 2 13 000 00	Satin	Flat surface	4 pcs.
AISI316	FINISH	FOR TUBE Ø	Box
X 2 13 000 00	Mirror	Flat surface	4 pcs.

Glass clamps are supplied without rubbers in boxes of 4

GLASS CLAMPS, RADIAL BASE



With locking pin

AISI304	FINISH	FOR TUBE Ø	Box
E 1 13 048 00	Satin	48.3mm	4 pcs.
AISI316	FINISH	FOR TUBE Ø	Box
E 2 13 048 00	Satin	48.3mm	4 pcs.
AISI316	FINISH	FOR TUBE Ø	Box
X 2 13 048 00	Mirror	48.3mm	4 pcs.

RUBBER



Monolithic glass

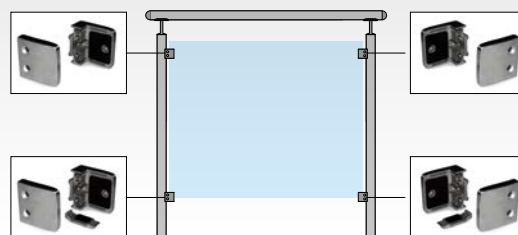
RUBBER	MOD.	GLASS THICKNESS T	NO. SET	NO. PER SET
R 13 12	13	12mm	4	2 pcs.
R 13 15	13	15mm	4	2 pcs.



Laminated glass

RUBBER	MOD.	GLASS THICKNESS T	NO. SET	NO. PER SET
R 13 44	13	9.52mm	4	2 pcs.
R 13 13	13	12.76mm	4	2 pcs.
R 13 17	13	16.76mm	4	2 pcs.
R 13 18	13	17.52mm	4	2 pcs.

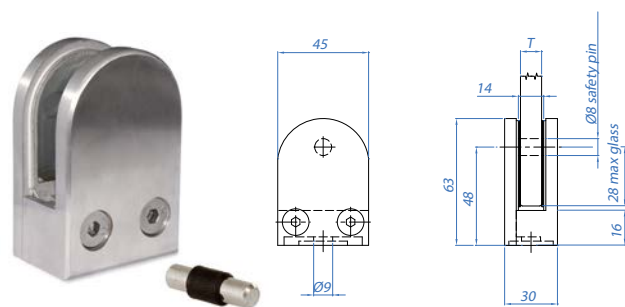
TO COMPLETELY REMOVE THE POSSIBILITY OF THE GLASS SLIDING, USE THE ACCESSORY SUPPLIED THAT CAN BE USED ON BOTH SIDES



i

GLASS CLAMPS - MODEL 14

GLASS CLAMPS, FLAT BASE

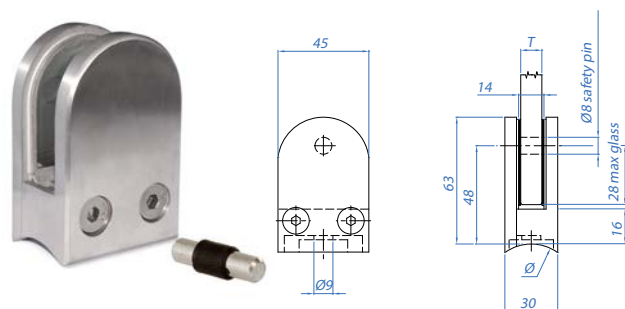


With locking pin

AISI304					FINISH	FOR TUBE Ø	Box
E	1	14	000	00	Satin	Flat surface	4 pcs.
AISI316					FINISH	FOR TUBE Ø	Box
E	2	14	000	00	Satin	Flat surface	4 pcs.
AISI316					FINISH	FOR TUBE Ø	Box
X	2	14	000	00	Mirror	Flat surface	4 pcs.

Glass clamps are supplied without rubbers in boxes of 4

GLASS CLAMPS, RADIAL BASE



With locking pin

AISI304					FINISH	FOR TUBE Ø	Box
E	1	14	042	00	Satin	42.4mm	4 pcs.
E	1	14	048	00	Satin	48.3mm	4 pcs.
AISI316					FINISH	FOR TUBE Ø	Box
E	2	14	042	00	Satin	42.4mm	4 pcs.
E	2	14	048	00	Satin	48.3mm	4 pcs.
AISI316					FINISH	FOR TUBE Ø	Box
X	2	14	042	00	Mirror	42.4mm	4 pcs.

RUBBER



Monolithic glass

RUBBER	MOD.	GLASS THICKNESS T	NO. SET	NO PER SET
R 14 12	14	12mm	4	2 pcs.



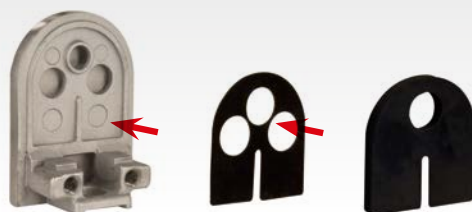
Laminated glass

RUBBER	MOD.	GLASS THICKNESS T	NO. SET	NO PER SET
R 14 11	14	10.76mm	4	2 pcs.
R 14 13	14	12.76mm	4	2 pcs.
R 14 14	14	13.52mm	4	2 pcs.



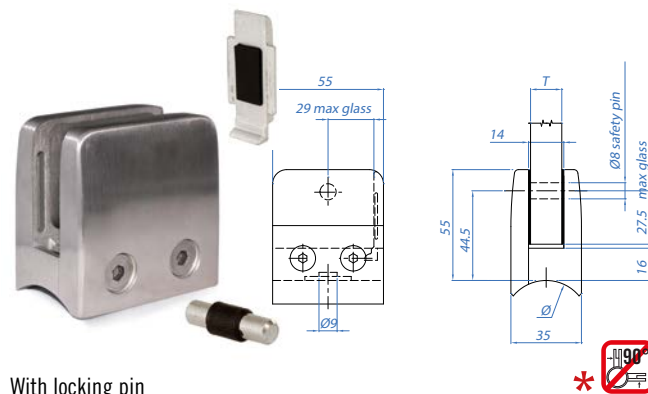
RUBBER	MOD.	THICKNESS	Nr. Set	Box
R 12 00	12/14	0.5mm	4	100 pcs.

Rubber gasket with a thickness of 0.5mm suitable to compensate for the variations in glass thicknesses. To be coupled with the main rubber gasket. Only for the glass clamp models 12 and 14.



07 GLASS CLAMPS - MODEL 15

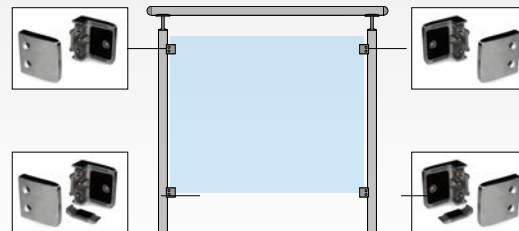

GLASS CLAMPS, RADIAL BASE



With locking pin

AISI304					FINISH	FOR TUBE Ø	Box 
E	1	15	*042	00	Satin	42.4mm	4 pcs.
E	1	15	048	00	Satin	48.3mm	4 pcs.
AISI316					FINISH	FOR TUBE Ø	Box 
E	2	15	*042	00	Satin	42.4mm	4 pcs.
E	2	15	048	00	Satin	48.3mm	4 pcs.
AISI316					FINISH	FOR TUBE Ø	Box 
X	2	15	*042	00	Mirror	42.4mm	4 pcs.

TO COMPLETELY REMOVE THE POSSIBILITY OF THE GLASS
SLIDING, USE THE ACCESSORY SUPPLIED THAT CAN BE USED
ON BOTH SIDES

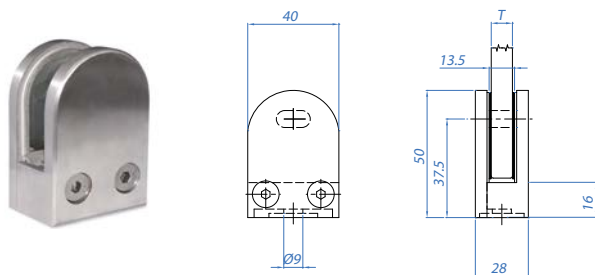
 Monolithic glass

Laminated glass

RUBBER	MOD.	GLASS THICKNESS T	NO. SET	NO. PER SET
R 15 09	15	8.76mm	4	2 pcs.
R 15 44	15	9.52mm	4	2 pcs.
R 15 11	15	10.76mm	4	2 pcs.
R 15 13	15	12.76mm	4	2 pcs.
R 15 14	15	13.52mm	4	2 pcs.

GLASS CLAMPS - MODEL 16

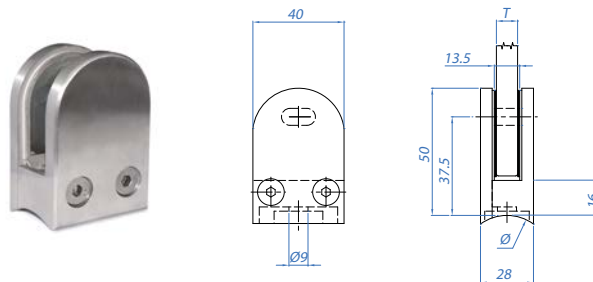
GLASS CLAMPS, FLAT BASE





AISI304						FINISH	FOR TUBE Ø	Box 
E	1	16	000	00	Satin		Flat surface	4 pcs.
AISI316						FINISH	FOR TUBE Ø	Box 
E	2	16	000	00	Satin		Flat surface	4 pcs.
AISI316						FINISH	FOR TUBE Ø	Box 
X	2	16	000	00	Mirror		Flat surface	4 pcs.

Glass clamps are supplied without rubbers in boxes of 4

GLASS CLAMPS, RADIAL BASE



AISI304						FINISH	FOR TUBE Ø	Box 
E	1	16	033	00	Satin		33.7mm	4 pcs.
E	1	16	042	00	Satin		42.4mm	4 pcs.
AISI316						FINISH	FOR TUBE Ø	Box 
E	2	16	033	00	Satin		33.7mm	4 pcs.
E	2	16	042	00	Satin		42.4mm	4 pcs.
AISI316						FINISH	FOR TUBE Ø	Box 
X	2	16	042	00	Mirror		42.4mm	4 pcs.

RUBBER



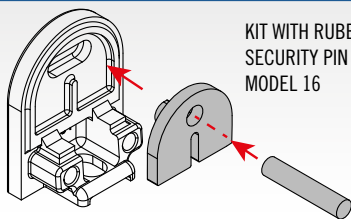
Monolithic glass

RUBBER	MOD.	GLASS THICKNESS T	NO. SET	NO. PER SET
R 16 08	16	8mm	4	2 pcs.
R 16 10	16	10mm	4	2 pcs.



Laminated glass

RUBBER	MOD.	GLASS THICKNESS T	NO. SET	NO. PER SET
R 16 09	16	8.76mm	4	2 pcs.
R 16 44	16	9.52mm	4	2 pcs.
R 16 11	16	10.76mm	4	2 pcs.



KIT WITH RUBBER AND SECURITY PIN FOR MODEL 16



Laminated glass

SAFETY KIT	MOD.	GLASS THICKNESS T	NO. SET	NO. PER SET
R 16 09P	16	8.76mm	4	2 pcs.
R 16 11P	16	10.76mm	4	2 pcs.



GLASS CLAMPS - SAFETY PIN

SAFETY PIN



Removes any chance of the glass sliding, giving peace of mind.



Saves time and money, as you do not need to drill the glass to insert the safety pins inside the clamps. The cost of drilling 4 holes in the glass averages an additional 15% on the cost of 1m² of glass - a cost that this accessory eliminates.

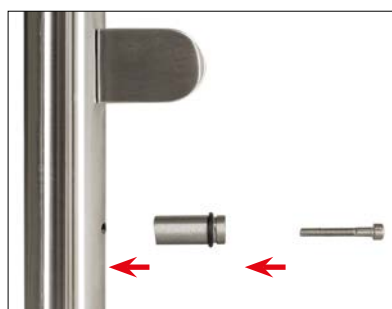


Only one **safety pin** is used on each side of the post.



1

DRILL A HOLE IN THE POST
BENEATH THE GLASS CLAMP



2

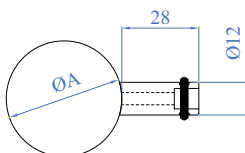
INSERT THE SAFETY PIN



3

FIT THE GLASS

EXTERNAL SAFETY PIN



AISI304

AISI316

FOR TUBE A

E21810

E41810

Ø 42.4mm

E21910

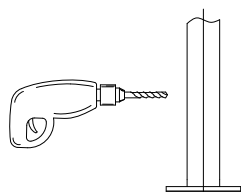
E41910

Flat surface

GLASS CLAMPS - INSTALLATION

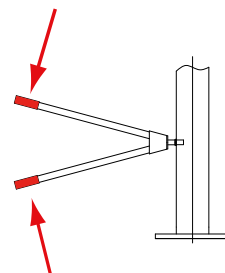
1

Drill an 11mm hole in the tube



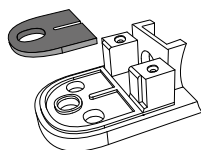
2

Use a riveting tool with an M8 rivet



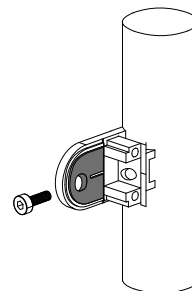
3

Put the rubbers of the required thickness in the appropriate position



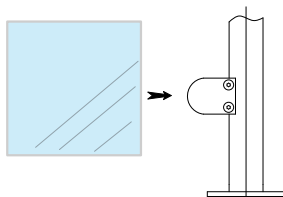
4

Fix the support to the tube by using an M8 screw



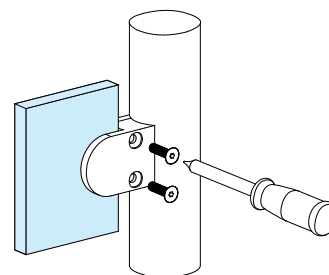
5

Position the glass against the support



6

Fix the support to the clamp with an M6 screw



WARNING

Please retain this brochure particularly the installation manual. Read the instruction manual carefully before assembling and installing the component parts. Always follow the legislation appropriate to the country of installation and for special projects please check local and national building regulations. Fit all parts as indicated in the relevant installation manual. Do not fit or use any products if you have doubts concerning its fitting. Do not use or install the products if you are missing any component pieces. In such cases, please contact your local Service Centre.

CHECKING AND MAINTENANCE

The fitting of any installation must be carried out by skilled workers, following instructions contained in the technical sheets supplied. Regular, periodical maintenance and checking are needed in order to gain and maintain the functionality and efficiency of any installation. Again, inspection and maintenance should only be carried out by competent and skilled workers.

We therefore suggest using only installers recommended by the manufacturer. Failure to do so will result in Aalco refusing all responsibility.

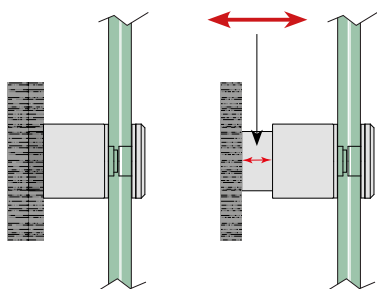
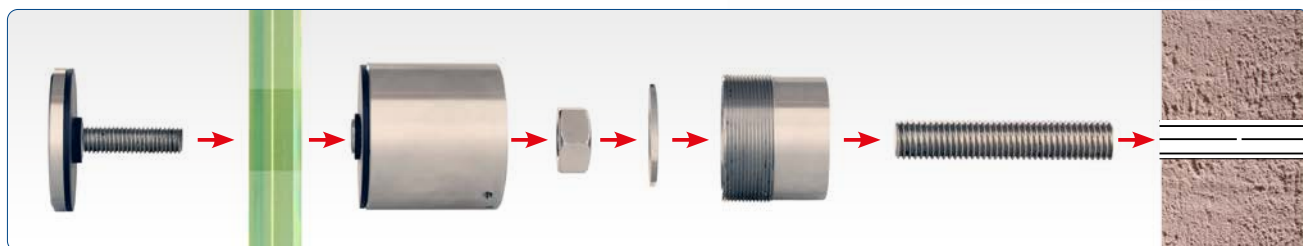
CLEANING INSTRUCTIONS

The use of stainless steel metallic parts guarantees the resistance to different atmospheric conditions. Do not use acids, alkaline solutions, abrasives or corrosive agents to clean the railings.

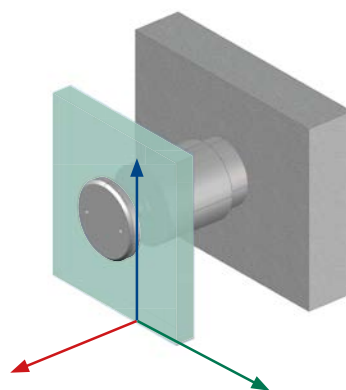
ADJUSTABLE FIXING POINTS

Aalco new ADJUSTABLE fixing system for balustrades and much more.

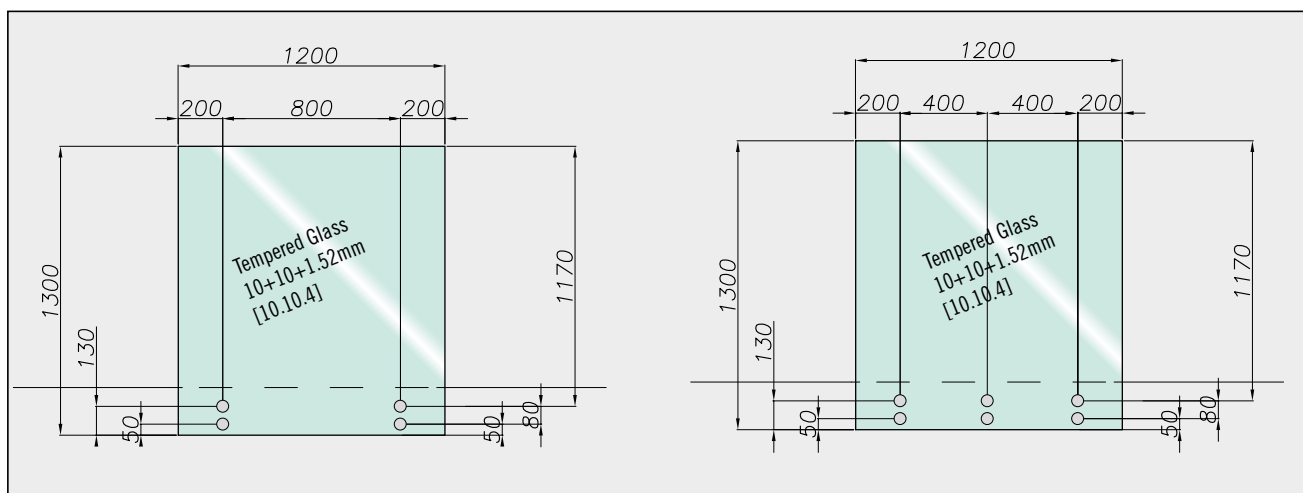
This innovative glass fixing system allows total control over the placement of the glass sheets, thus facilitating installation, even on irregular walls.



12mm depth adjustability of the glass sheet



360° adjustability of the glass sheet



GLASS WALL CLAMPS

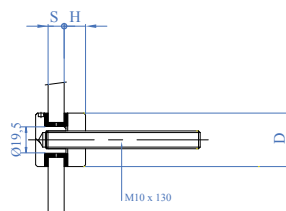


AISI304	LENGTH L	DIAMETER D	GLASS THICKNESS
E620075	45mm	40mm	from 12.76 to 15mm
E620080	45mm	50mm	from 16.76 to 21.52mm

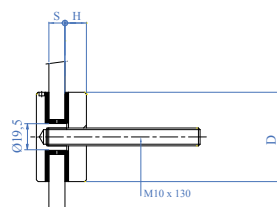
AISI316	LENGTH L	DIAMETER D	GLASS THICKNESS
E640075	45mm	40mm	from 12.76 to 15mm
E640080	45mm	50mm	from 16.76 to 21.52mm
E640085	45mm	60mm	from 22 to 25.52mm



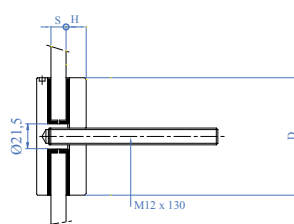
GLASS WALL CLAMPS



AISI304	AISI316	H	DIAMETER D	GLASS THICKNESS S
E40930304	E40930	10mm	30mm	8 - 16.76mm



AISI304	AISI316	H	DIAMETER D	GLASS THICKNESS S
E40940304	E40940	10mm	50mm	8 - 16.76mm



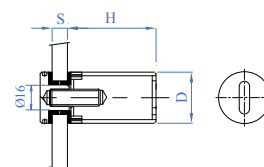
AISI316	H	DIAMETER D	GLASS THICKNESS S
E40960	10mm	60mm	8 - 16.76mm

ADAPTOR FOR WOOD

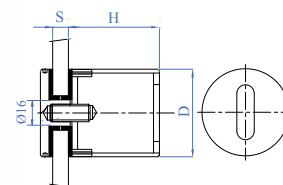
E40999 makes the installation of the glass supports on wood very easy. The item is to be installed in the place of the M10 threaded rod



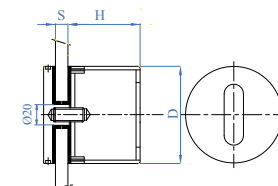
AISI304	METRIC THREAD	WOOD THREAD	LENGTH
E40999	M10	11	100mm



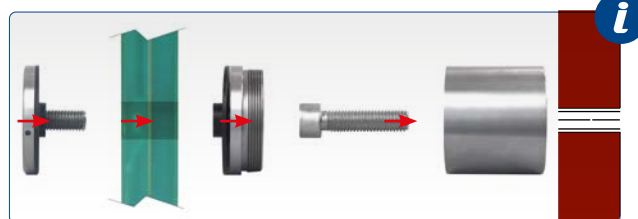
AISI304	AISI316	H	DIAMETER D	GLASS THICKNESS S
E40900304	E40900	40mm	30mm	8 - 16.76mm
E40901304	E40901	50mm	30mm	8 - 16.76mm
E40902304	E40902	60mm	30mm	8 - 16.76mm



AISI316	H	DIAMETER D	GLASS THICKNESS S
E40910	40mm	50mm	8 - 17.52mm
E40911	50mm	50mm	8 - 17.52mm
E40912	60mm	50mm	8 - 17.52mm



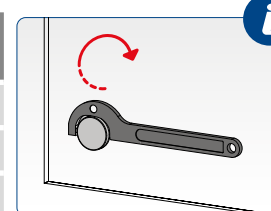
AISI316	H	DIAMETER D	GLASS THICKNESS S
E40920	40mm	60mm	8 - 17.52mm
E40921	50mm	60mm	8 - 17.52mm
E40922	60mm	60mm	8 - 17.52mm



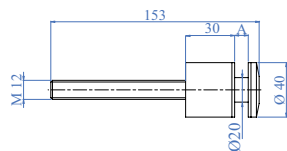
Adjustable wrench to tighten rods and suspended steps



Code No.	FOR DIAMETER
E40790	15 - 35mm
E40791	36 - 50mm
E40792	51 - 80mm

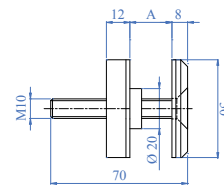


GLASS WALL CLAMPS



Round support complete with threaded screw and glass attachment

2kN



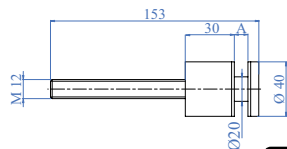
Round support complete with threaded screw and glass attachment

2kN



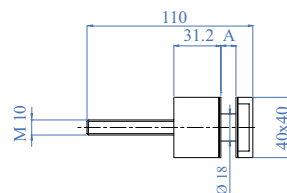
AISI304	AISI316	GLASS THICKNESS A
E2200100	E2200200	from 8 to 12.76mm
E2200300	E2200400	from 16.76 to 21.52mm

AISI304	GLASS THICKNESS A
E2200500	from 8 to 21.52mm



Round support complete with threaded screw and glass attachment

2kN



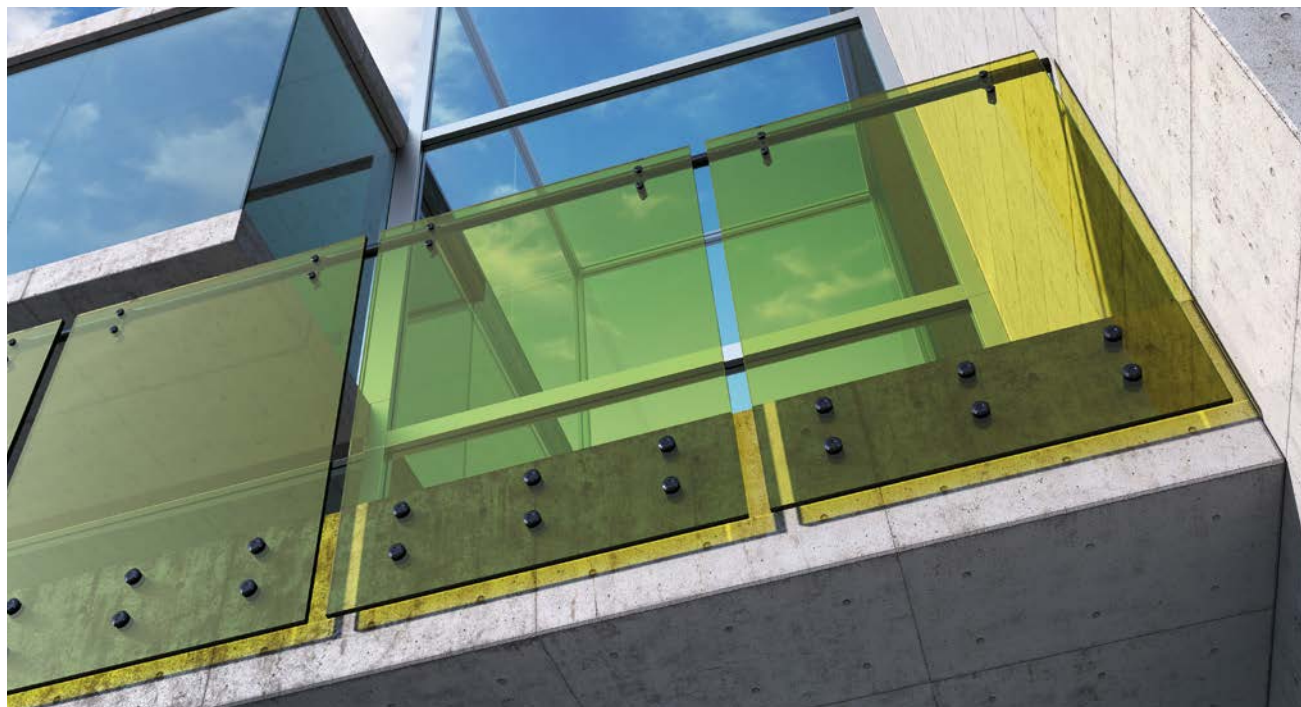
Square support complete with threaded screw and glass attachment

2kN



AISI304	GLASS THICKNESS A
E004720163	from 8 to 12.76mm

AISI304	GLASS THICKNESS A
E004720185	from 8 to 12.76mm



07 GLASS ADAPTORS - GLASS WALL CLAMPS