

# 08 DA VINCI CLAMP

DA VINCI CLAMP SYSTEM INTRODUCTION	100
DA VINCI CLAMP SYSTEM - ROUND	101
DA VINCI CLAMP SYSTEM - INSTALLATION	102

## 08 DA VINCI CLAMP SYSTEM



RUBBER MALLET TO BE USED



PRODUCT TO BE GLUED WITH E4054



ASSEMBLY WITH ALLEN KEY



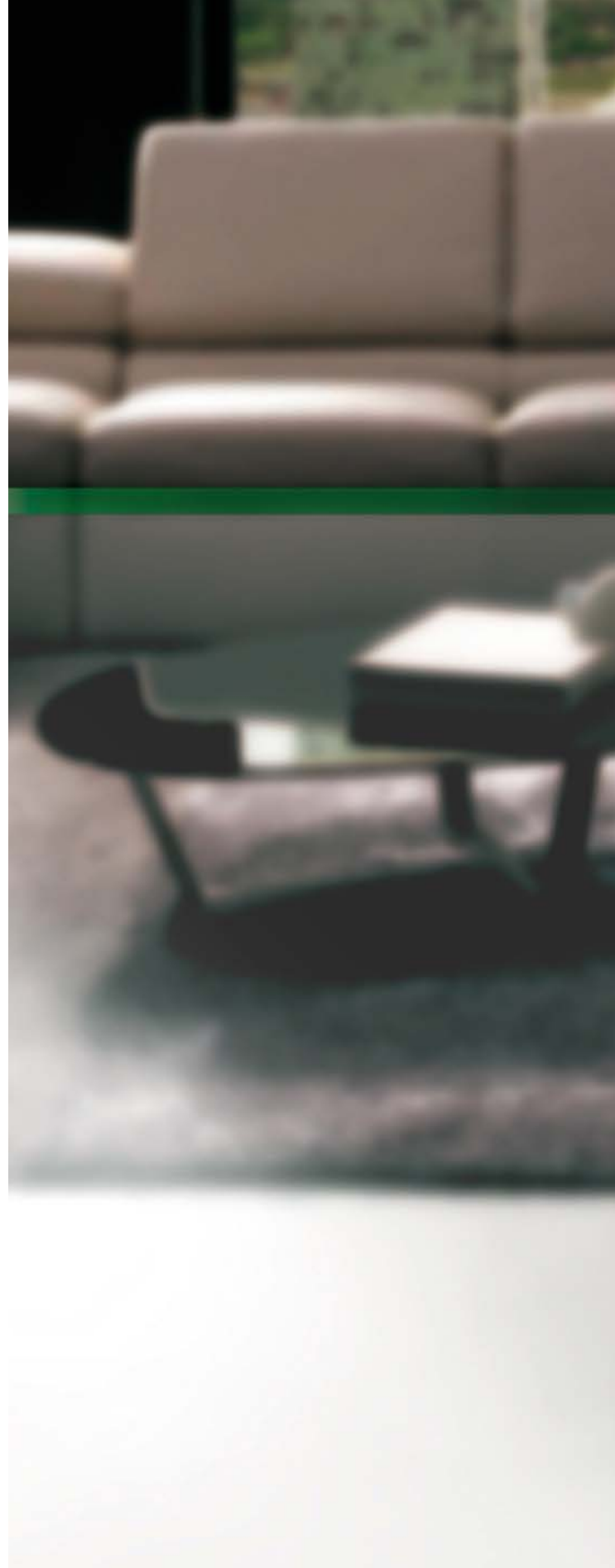
PRODUCT TO BE WELDED



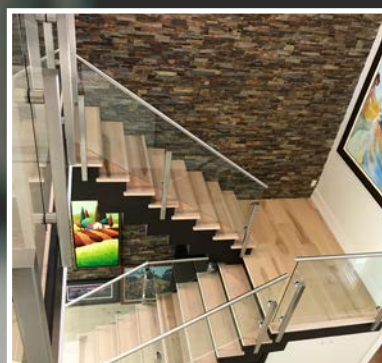
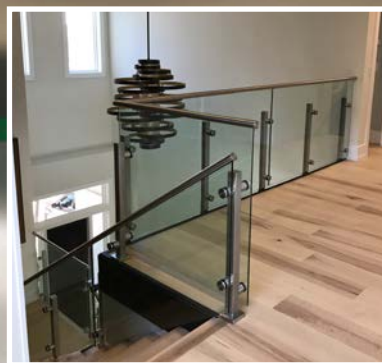
ANTI-CLIMB PRODUCT



SUPER STRONG, HIGH RESISTANT PRODUCT



Da Vinci is an innovative glass clamp system based on an interchangeable clamp that can be used with almost any tube or newel post. The movable clamp enables the glass to be rotated around the mounted post, with a lateral locking mechanism requiring just a single support for a glazing panel. A unique glass aligner ensures correct positioning of the glazing - a particularly useful feature in applications where the floor is uneven or in instances when the newel posts have been incorrectly installed.



## 08 DA VINCI CLAMP SYSTEM

## DA VINCI CLAMP SYSTEM INTRODUCTION

DA VINCI  
CLAMP SYSTEM

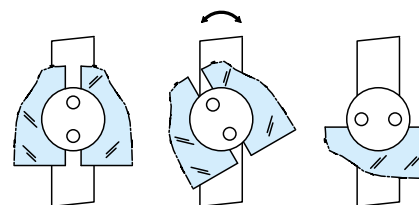
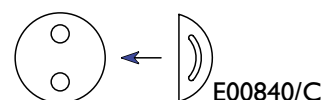
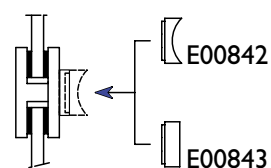
1  
INNOVATIVE  
GLASS CLAMP

MANY  
DIFFERENT  
SOLUTIONS

## WHY IS IT INNOVATIVE?

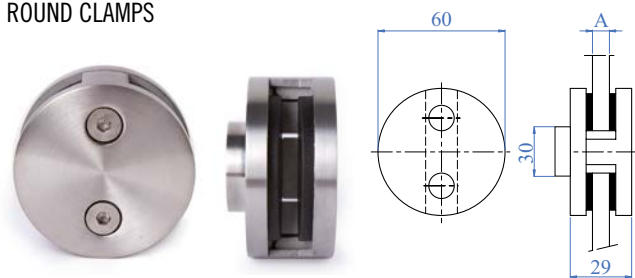


- The interchangeable clamp can be used with almost any tube!
- Lateral locking enables it to be used as a single glass support
- The movable clamp permits rotation of the glass around the mounted post



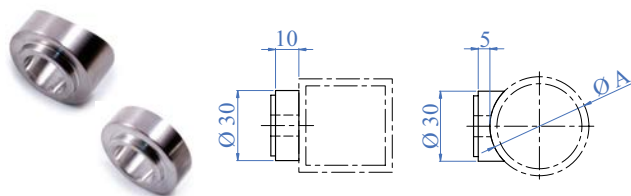
# DA VINCI CLAMP SYSTEM - ROUND

## ROUND CLAMPS



AISI304	AISI316	DIMENSION
Satin Finish		
E00840/304	E00840	Ø 60mm
Mirror Polished		
-	X00840	Ø 60mm

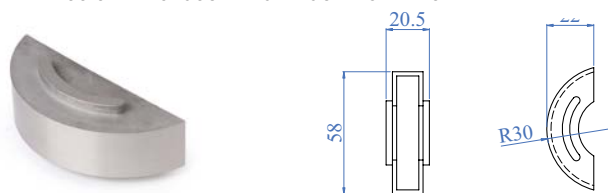
## ADAPTOR FOR ROUND CLAMPS



Adaptor to be inserted on round clamp

AISI316	FOR TUBE A
E00842	Ø 42.4mm
E00844	Ø 48.3mm
E00843	Flat face

## STAINLESS STEEL CLOSURE FOR ROUND CLAMPS



Stainless steel closure satin finished, fundamental to obtain a glass holder for just one piece of glass

AISI316
Satin Finish
E00840/C

## RUBBER FOR ROUND GLASS CLAMPS

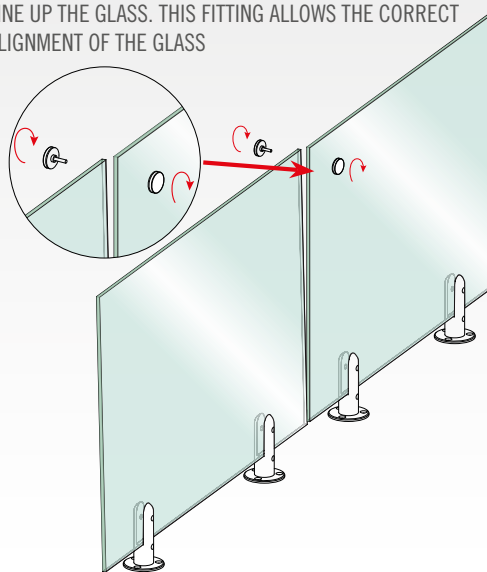


To use with these items:  
E00840/304 - E00840 - X00840

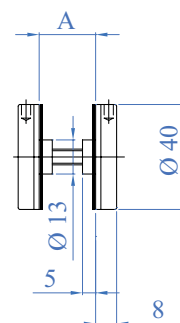
RUBBER	NUMBER OF PIECES IN SET	GLASS THICKNESS A
E00840/R	2	8mm
E00840/R1	2	8.76mm
E00840/R2	2	10mm
E00840/R3	2	10.76mm
E00840/R4	2	12mm
E00840/R5	2	12.76mm

WE ARE ABLE TO PRODUCE ADAPTORS FOR ANY SURFACE.

IN MANY CASES, BECAUSE OF UNEVEN FLOORS OR INCORRECTLY INSTALLED NEWEL POSTS, IT BECOMES VERY DIFFICULT TO LINE UP THE GLASS. THIS FITTING ALLOWS THE CORRECT ALIGNMENT OF THE GLASS



## GLASS ALIGNER

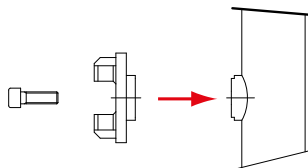


AISI304	AISI316	GLASS THICKNESS A
E00994	E00994316	from 12.76 to 21.52mm

# DA VINCI CLAMP SYSTEM - INSTALLATION

1

Fix the adaptor and the back part of the "Da Vinci Clamp" to the tube with an M6 screw



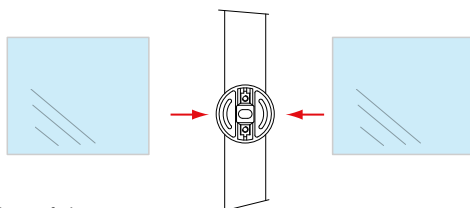
2

Put the rubbers in the appropriate position



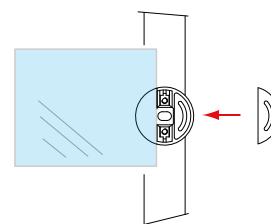
3

Insert the 2 pieces of glass vertically in the clamp



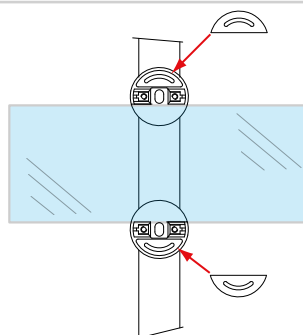
3B

If the glass is needed only on one side, use E00840/C on the opposite side



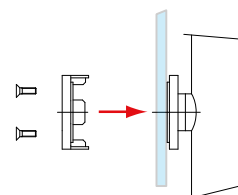
3C

For a more secure railing, rotate the supports horizontally and insert the glass panels between them. Close the unused side of the support using E00840/C



4

Fully fix the support



## WARNING

Please retain this brochure particularly the installation manual. Read the instruction manual carefully before assembling and installing the component parts. Always follow the legislation appropriate to the country of installation and for special projects please check local and national building regulations. Fit all parts as indicated in the relevant installation manual. Do not fit or use any products if you have doubts concerning its fitting. Do not use or install the products if you are missing any component pieces. In such cases, please contact your local Service Centre.

## CHECKING AND MAINTENANCE

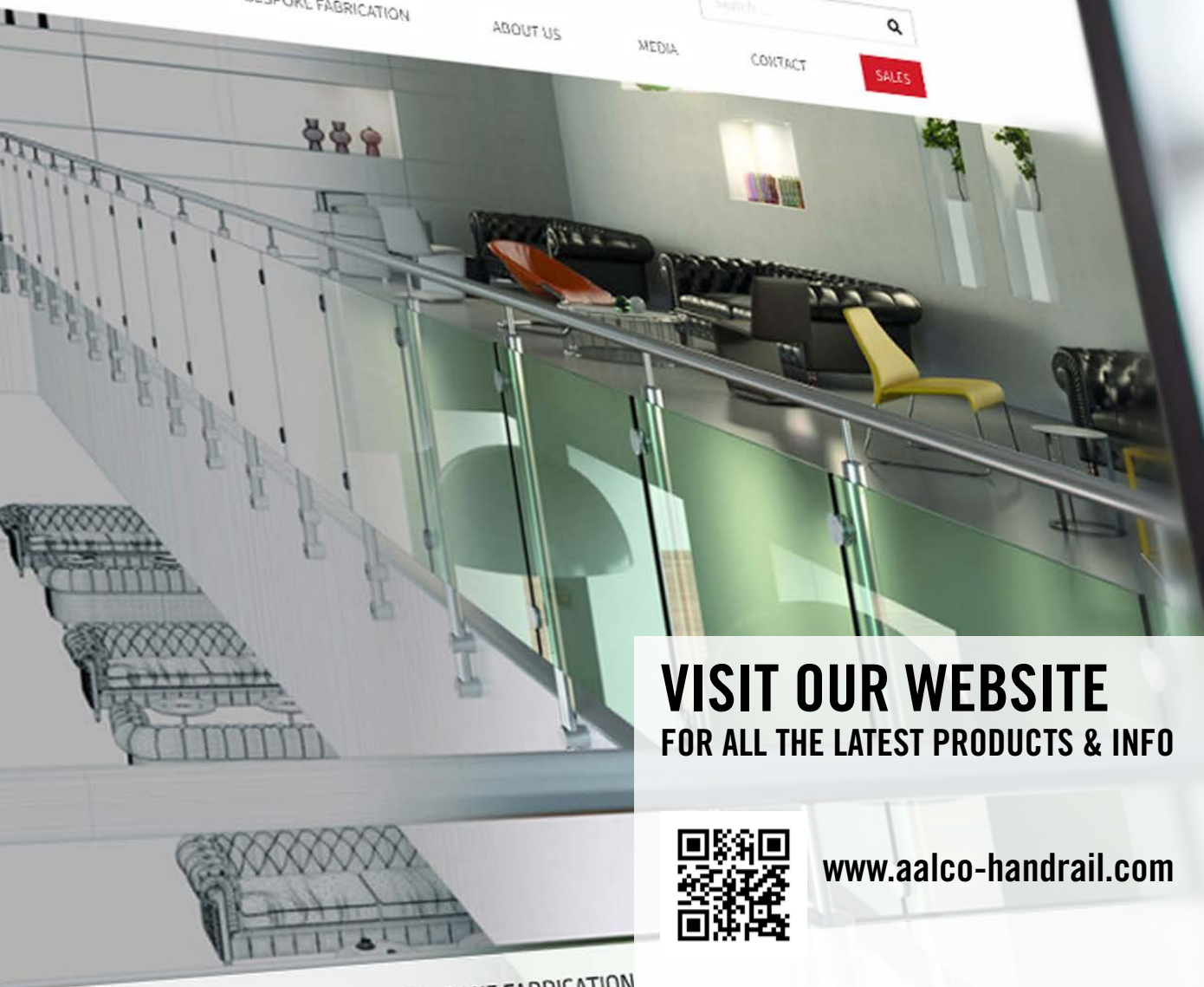
The fitting of any installation must be carried out by skilled workers, following instructions contained in the technical sheets supplied. Regular, periodical maintenance and checking are needed in order to gain and maintain the functionality and efficiency of any installation. Again, inspection and maintenance should only be carried out by competent and skilled workers.

We therefore suggest using only installers recommended by the manufacturer. Failure to do so will result in Aalco refusing all responsibility.

## CLEANING INSTRUCTIONS

The use of stainless steel metallic parts guarantees the resistance to different atmospheric conditions. Do not use acids, alkaline solutions, abrasives or corrosive agents to clean the railings.





**VISIT OUR WEBSITE**  
FOR ALL THE LATEST PRODUCTS & INFO



[www.aalco-handrail.com](http://www.aalco-handrail.com)

**BESPOKE FABRICATION**

Specialist in the design and fabrication of balustrade and handrail systems to customers exact specifications

View System