

# 10 WIRE ROPE SYSTEM

WIRE ROPES	112
WIRE ACCESSORIES	112 - 118
EXAMPLES OF APPLICATIONS	119
ASSEMBLY ACCESSORIES	119

## 10 WIRE ROPE SYSTEM



RUBBER Mallet TO BE USED



PRODUCT TO BE GLUED WITH E4054



ASSEMBLY WITH ALLEN KEY



PRODUCT TO BE WELDED



ANTI-CLIMB PRODUCT



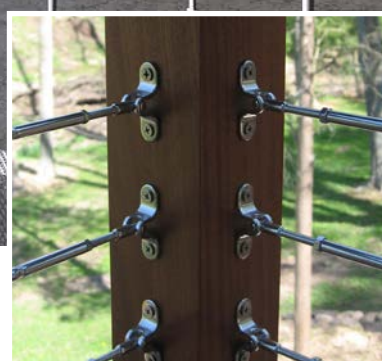
SUPER STRONG, HIGH RESISTANT PRODUCT





This system is extremely modular and easy to install. Originally it was used in marine applications but has recently become the leading system in many modern architectural settings.

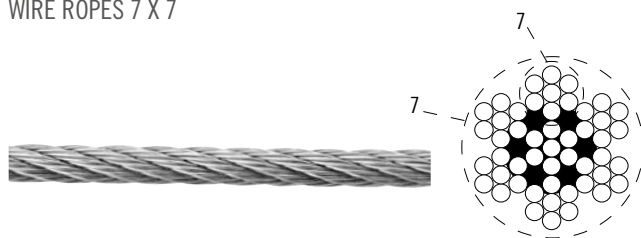
Very simple to assemble, the ROPE SYSTEM ensures topical solutions that fit perfectly in a range of different environments



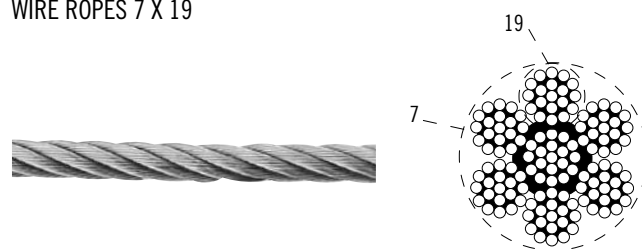
## 10 WIRE ROPE SYSTEM

# WIRE ROPE SYSTEM

WIRE ROPES 7 X 7



WIRE ROPES 7 X 19



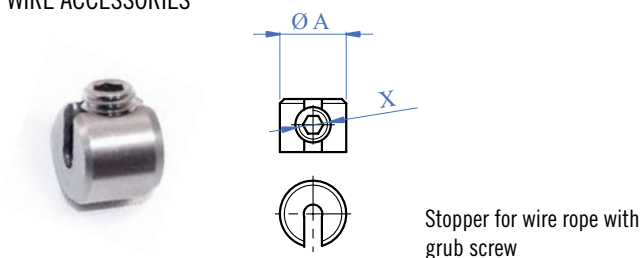
Stainless steel ropes

AISI316	ROPE	MINIMUM BREAK LOAD
EF7X704	Ø 4mm	9.00 kN
EF7X705	Ø 5mm	14.00 kN
EF7X706	Ø 6mm	20.00 kN

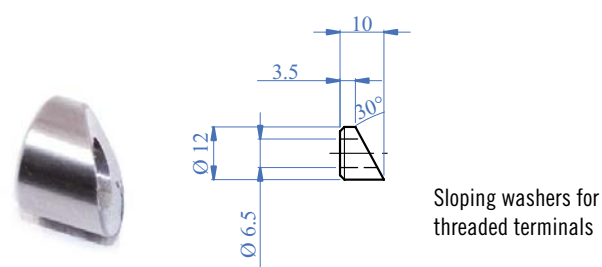
Stainless steel ropes

AISI316	ROPE	MINIMUM BREAK LOAD
EF7X1904	Ø 4mm	8.50 kN
EF7X1905	Ø 5mm	14.00 kN
EF7X1906	Ø 6mm	20.00 kN

WIRE ACCESSORIES



AISI303	AISI316	ROPE	X	Ø A
EA04	EA04316	Ø 4mm	M8	Ø 15mm
EA05	EA05316	Ø 5-6mm	M6	Ø 20mm

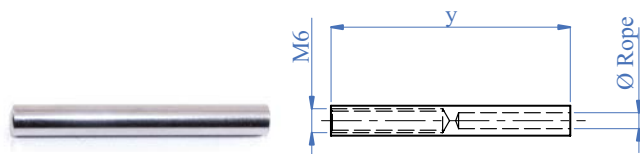


AISI303	AISI316	FOR TUBE	HOLE
EB061	EB061316	Ø 42.4mm	Ø 6.5mm
EB063	EB063316	Flat face	Ø 6.5mm



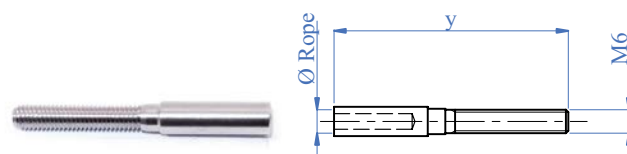
AISI303	AISI316	FOR TUBE	HOLE
EB071	-	Ø 42.4mm	Ø 8.5mm
EB073	EB073316	Flat face	Ø 8.5mm

# WIRE ROPE SYSTEM



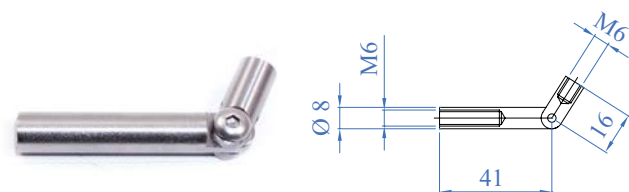
Threaded inside terminal

AISI316	SIDE	ROPE	y
ETF04SX	Left	Ø 4mm	60mm
ETF05SX	Left	Ø 5mm	60mm
ETF06SX	Left	Ø 6mm	70mm
ETF04DX	Right	Ø 4mm	60mm
ETF05DX	Right	Ø 5mm	60mm
ETF06DX	Right	Ø 6mm	70mm



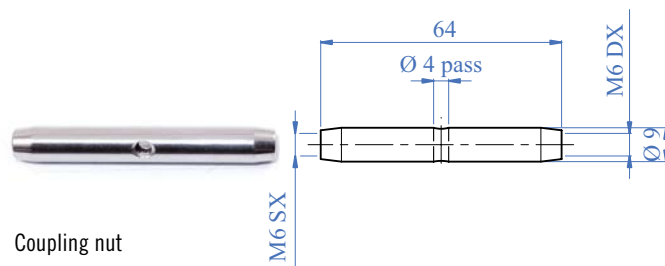
Threaded terminal

AISI316	SIDE	ROPE	y
ETM04SX	Left	Ø 4mm	60mm
ETM05SX	Left	Ø 5mm	60mm
ETM06SX	Left	Ø 6mm	70mm
ETM04DX	Right	Ø 4mm	60mm
ETM05DX	Right	Ø 5mm	60mm
ETM06DX	Right	Ø 6mm	70mm



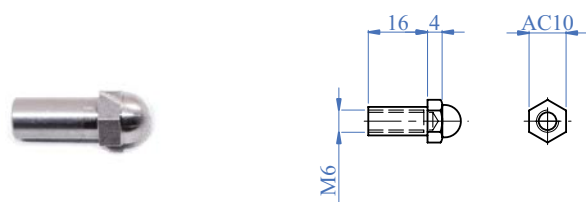
Adjustable connector

AISI303	AISI316	DESCRIPTION
ED05	ED05316	Adjustable ropes with 2 M6 thread



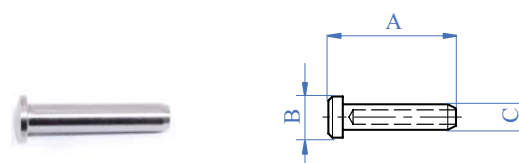
Coupling nut

AISI316	DESCRIPTION
ET06	Domed head nut right-hand thread M6



Finial with hexagonal head

AISI316	DESCRIPTION
ED06	Domed head nut right-hand thread M6
ED06SX	Domed head nut left-hand thread M6



Terminal with hexagonal head, to be crimped

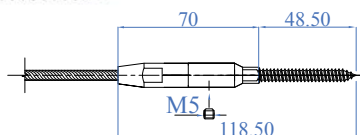
AISI303	AISI316	ROPE	A	B	C
ETTB04304	ETTB04	Ø 4mm	31mm	10mm	6.5mm
ETTB05304	ETTB05	Ø 5mm	40mm	12mm	7.8mm
-	ETTB06	Ø 6mm	44mm	14mm	9mm



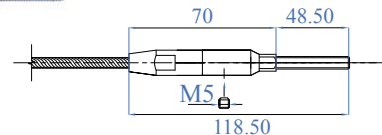
# WIRE ROPE SYSTEM



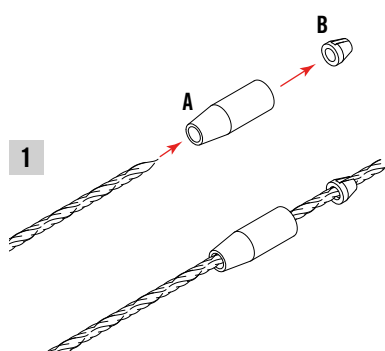
Threaded terminal for wood



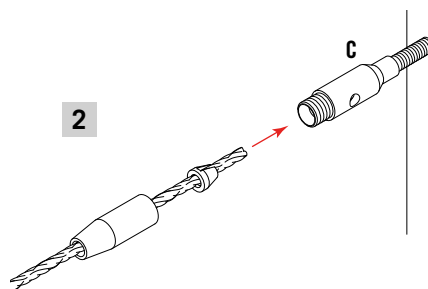
AISI316	DESCRIPTION	ROPE
ETSM3010	Right hand thread	Ø 4-5-6mm
ETSM3010/SX	Left hand thread	Ø 4-5-6mm



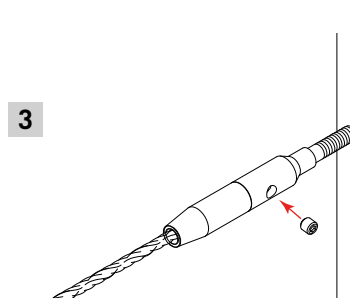
AISI316	ROPE
ETSM3000	Ø 4-5-6mm



1 INSERT THE CABLE AS SHOWN THROUGH PARTS A AND B



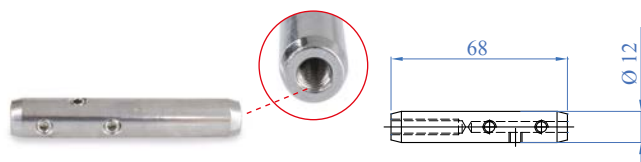
2 JOIN THE ELEMENTS WITH PART C



3 FIX ETSM3000 WITH THE SOCKET HEAD SCREW SUPPLIED

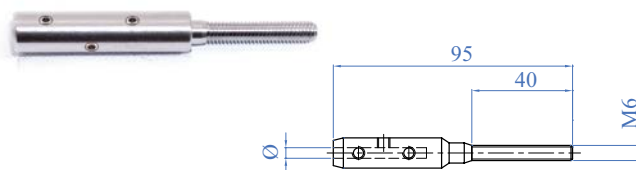
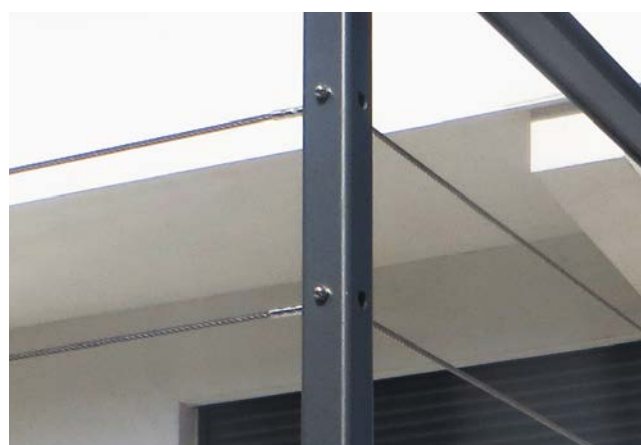


# WIRE ROPE SYSTEM

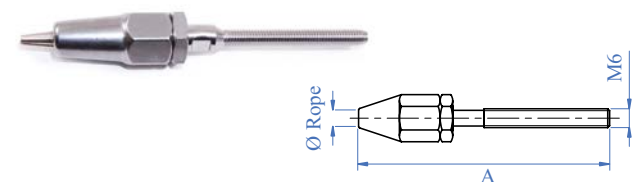
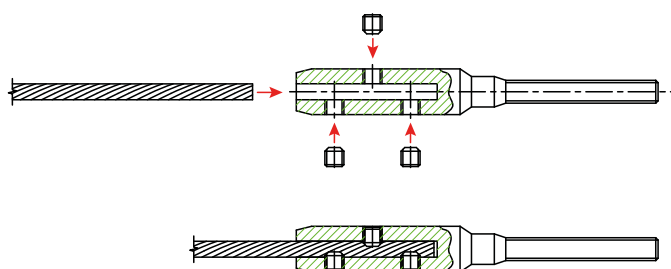


Left and right female end fitting, with M6 thread

AISI316	DESCRIPTION	ROPE
ETFTS04DX	Right-hand thread	Ø 4mm
ETFTS04SX	Left-hand thread	Ø 4mm
ETFTS05DX	Right-hand thread	Ø 5mm
ETFTS05SX	Left-hand thread	Ø 5mm
ETFTS06DX	Right-hand thread	Ø 6mm
ETFTS06SX	Left-hand thread	Ø 6mm



AISI316	DESCRIPTION	ROPE
ETS4	Right-hand thread	Ø 4mm
ETS5	Right-hand thread	Ø 5mm
ETS6	Right-hand thread	Ø 6mm



Swageless thread terminal M6

AISI316	ROPE	THREAD	NUT	A
ETSM8	Ø 4mm	M6	M8	90mm
ETSM10	Ø 5mm	M6	M10	107mm
ETSM12	Ø 6mm	M6	M12	119mm

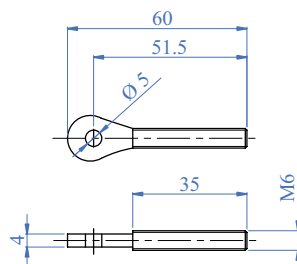
- 1 INSERT THE CABLE THROUGH THE POINT OF ETSM8
- 2 UNROLL THE CABLE AND INSERT THE NOSE OF THE CENTRAL PART OF THE CABLE
- 3 ROLL AROUND TO FORM ONE PIECE AND INSERT CABLE INTO THE POINT OF ETSM8
- 4 SCREW IN THE FINAL PART OF ETSM8
- 5 BLOCK WITH THE ENCLOSED NUT

# WIRE ROPE SYSTEM

## WIRE ACCESSORIES



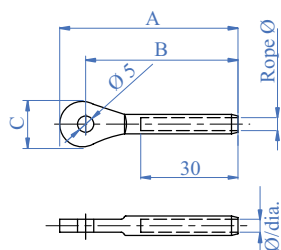
Threaded eye stud M6



AISI316	DESCRIPTION
ETFM06DX	Right-hand thread



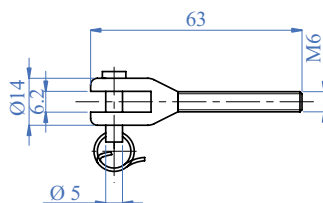
Eye terminal to crimp



AISI316	ROPE	A	B	C	Ø/dia.
ETFF05	Ø 5mm	55mm	48mm	13.5mm	8mm
ETFF06	Ø 6mm	56.5mm	48mm	14mm	9mm



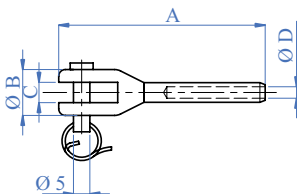
Threaded fork stud M6



AISI316	DESCRIPTION
ETMT06DX	Right-hand thread
ETMT06SX	Left-hand thread



Fork terminal to crimp



AISI316	ROPE	A	Ø B	C	Ø D
ETFT05	Ø 5mm	63mm	14mm	6.5mm	7.5mm
ETFT06	Ø 6mm	63mm	14mm	6.5mm	9mm

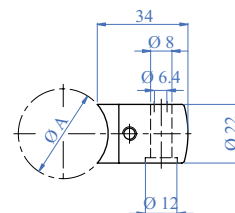
Shearing tool for wire ropes up to Ø 8mm



Code No
E40690

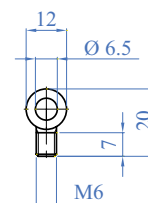


AISI316	NUT
EDADM602	M6 right thread
EDADM602SX	M6 left thread



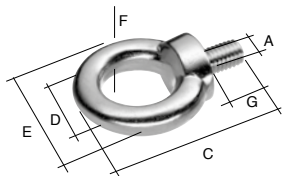
Terminal supports for external wire rope

AISI303	AISI316	FOR TUBE A	ROPE
EST041DX	EST051DX	Ø 42.4mm	Ø 4-5-6mm
EST041SX	EST051SX	Ø 42.4mm	Ø 4-5-6mm

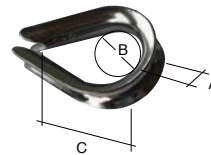


AISI316	ROPE
E1106	Ø 4-5-6mm

# WIRE ROPE SYSTEM



Ring bolt



Thimble

AISI304	A	C	D	E	F	G	MkN
E8463591	M8	49mm	20mm	36mm	8mm	13mm	1.0 kN

AISI304	Ø	A	B	C
E8402009	5mm	9mm	16mm	25mm

Aalco offers a custom rope service by using specific equipment that enables the company to cut and crimp the rope exactly as your project requires. Simply complete the order form below and email to your local service centre



Loop with thimble and press sleeve

**1**

Which rope?

ROPE	A	B	C	D
Ø 4mm	8mm	13mm	20mm	9mm
Ø 5mm	9mm	16mm	25mm	11mm
Ø 6mm	10mm	18mm	28mm	13mm

☐ Ø 4mm  
☐ Ø 5mm  
☐ Ø 6mm

**2**

Which version?

☐ Loop  
☐ Loop

**3**

What length?

☐ X1 \_\_\_\_\_ mm  
☐ X2 \_\_\_\_\_ mm

**4**

Quantity?

NO. \_\_\_\_\_

NO. \_\_\_\_\_

Loop with press sleeve

**1**

Which rope?

ROPE	A	B	C
Ø 4mm	60mm	20mm	8mm
Ø 5mm	75mm	25mm	9mm
Ø 6mm	90mm	30mm	12mm

☐ Ø 4mm  
☐ Ø 5mm  
☐ Ø 6mm

**2**

Which version?

☐ Loop  
☐ Loop

**3**

What length?

☐ X1 \_\_\_\_\_ mm  
☐ X2 \_\_\_\_\_ mm

**4**

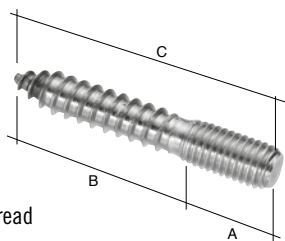
Quantity?

NO. \_\_\_\_\_

NO. \_\_\_\_\_

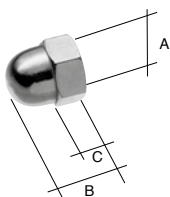


# WIRE ROPE SYSTEM



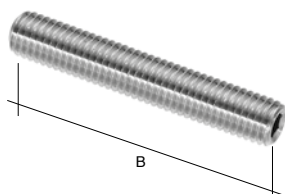
Dowel screw with thread

AISI304 R-hand thread	AISI304 L-hand thread	EXTERNAL THREAD	A	B	C
E8461156	-	M5	20mm	30mm	50mm
E8461158	E8461159	M6	30mm	44mm	74mm
E8461160	-	M8	40mm	60mm	100mm



Cap nut

AISI304	RIGHT-HAND THREAD	A	B	C
E8449240	M6	12mm	10mm	6mm
E8449241	M8	15mm	13mm	8.5mm
E8449242	M10	18mm	17mm	10mm



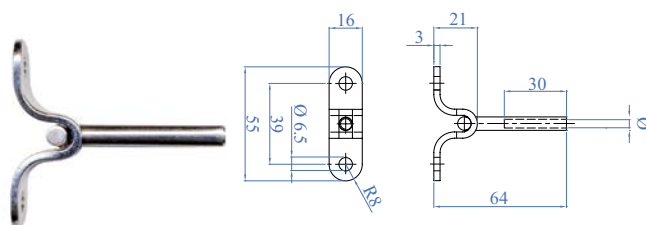
Grub screw

AISI304 R-hand thread	AISI304 L-hand thread	EXTERNAL THREAD	B
E8461132	E8461133	M6	40mm

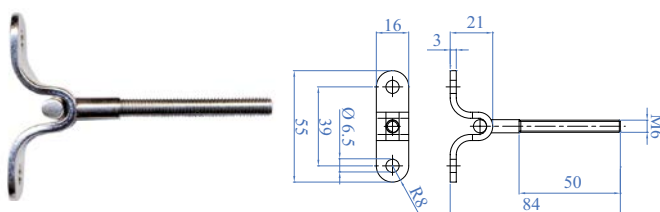


Hexagonal nut

AISI304 R- hand thread	AISI304 L- hand thread	INSIDE THREAD	A	B
E8439656	E8449454	M6	5mm	10mm



AISI316	ROPE Ø
EMM04	Ø 4mm
EMM05	Ø 5mm
EMM06	Ø 6mm

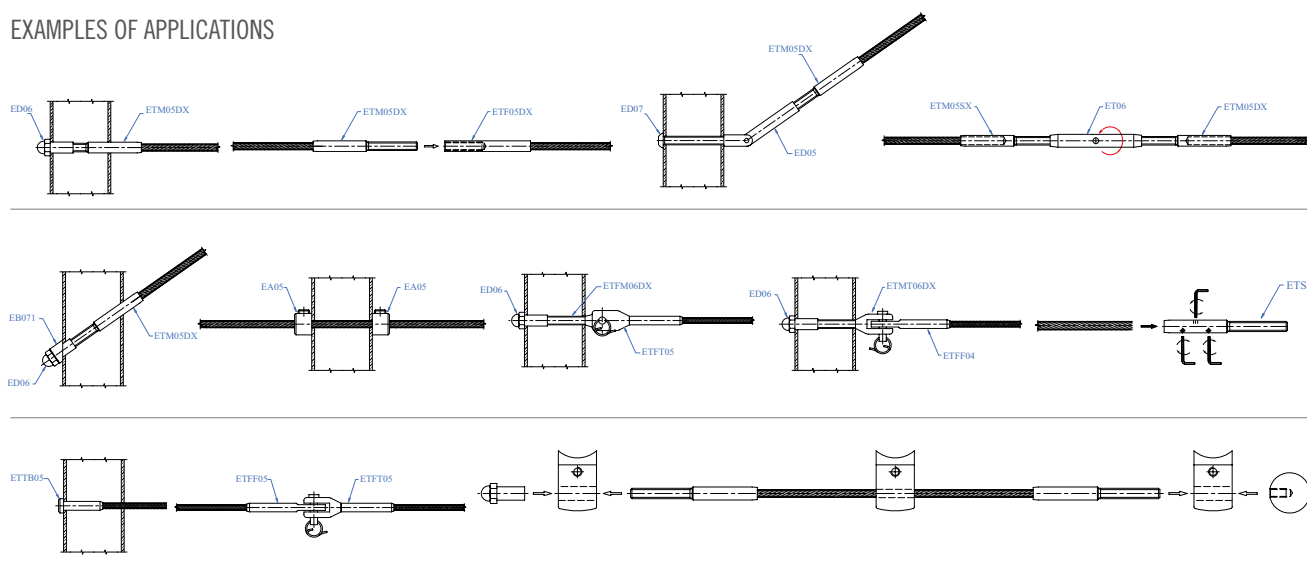


AISI316	ROPE
EMMF06DX	Right-hand thread
EMMF06SX	Left-hand thread



# WIRE ROPE SYSTEM

## EXAMPLES OF APPLICATIONS



## ROPE SYSTEM ASSEMBLY ACCESSORIES

Code No.

E40680

Portable hydraulic battery tool with pivotable head for pressing wire ropes.

Kit composed of:

- basic tool with battery, wrist strap and shoulder strap
- spare battery
- battery charger

ALSO AVAILABLE TO HIRE



Code No.

E40685

Manual hydraulic crimping tool to press wire ropes. Light and easy to use.

Generated force: 50 kN



10 WIRE ROPE SYSTEM