

11 NEWEL POSTS

NEWEL POSTS - ROUND	122
NEWEL POSTS - SQUARE	123
NEWEL POSTS - DRILLING TEMPLATE	124

11 NEWEL POSTS



RUBBER MALLET TO BE USED



PRODUCT TO BE GLUED WITH E4054



ASSEMBLY WITH ALLEN KEY



PRODUCT TO BE WELDED



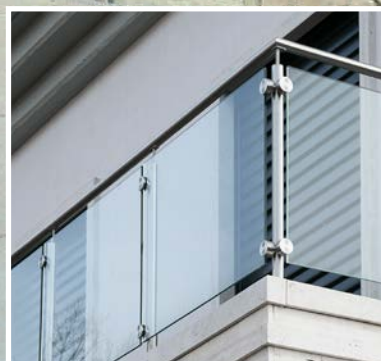
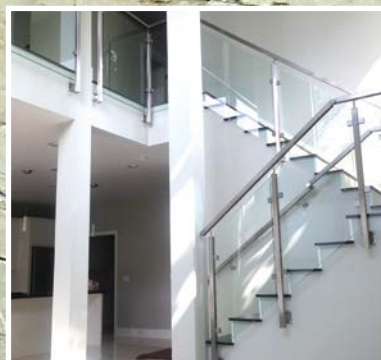
ANTI-CLIMB PRODUCT



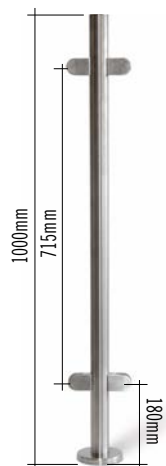
SUPER STRONG, HIGH RESISTANT PRODUCT



We offer a wide range of pre-assembled newel posts that make installation easier and therefore more cost effective. In addition to the standard products, also available are customised newel posts in various sizes and to customer specifications. The range includes various finishes and can be powder coated to any colour in the RAL chart, offering not only aesthetic benefits but improved performance in external applications.



NEWEL POSTS - ROUND

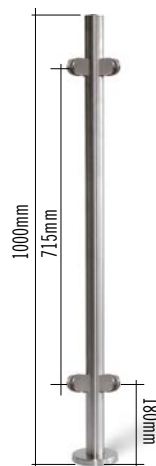


AISI304	AISI316	Ø NEWEL POST
Satin Finish		
EC24204P	EC44204P	42.4 x 2.0mm
Mirror Polished		
-	XC44204P	42.4 x 2.0mm
-	XC44304P	43.0 x 1.5mm

Complete with 4 glass clamps, mounting plate and flange canopy



FOR THESE POSTS USE MODEL 16 CLAMPS 40 x 50mm WITH RUBBERS FOR GLASS 8.76 AND 10.76mm

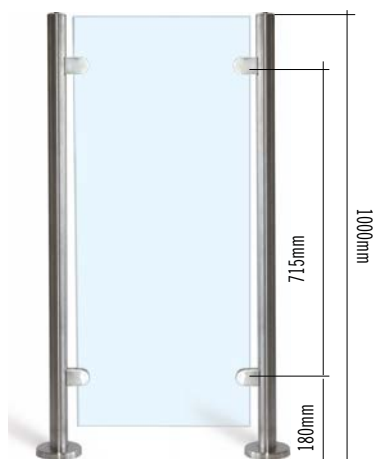


AISI304	AISI316	Ø NEWEL POST
Satin Finish		
EC24204P90	EC44204P90	42.4 x 2.0mm
Mirror Polished		
-	XC44304P90	43.0 x 1.5mm

Complete with 4 glass clamps with 90° angle, mounting plate and flange canopy

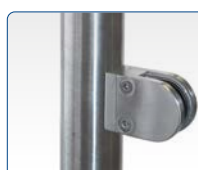


FOR THESE POSTS USE MODEL 16 CLAMPS 40 x 50mm WITH RUBBERS FOR GLASS 8.76 AND 10.76mm



AISI304	AISI316	Ø NEWEL POST
Satin Finish		
EC24202P	EC44202P	42.4 x 2.0mm
Mirror Polished		
-	XC44202P	42.4 x 2.0mm
-	XC44302P	43.0 x 1.5mm

Complete with 2 glass clamps, mounting plate and flange canopy



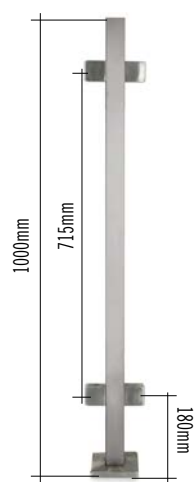
FOR THESE POSTS USE MODEL 16 CLAMPS 40 x 50mm WITH RUBBERS FOR GLASS 8.76 AND 10.76mm

Posts with reinforced base for higher resistance and security.



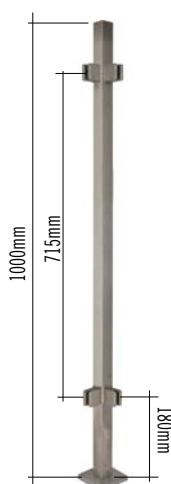
AISI316	X	H
E033610014	42.4 x 2.0mm	1000mm
E033610015	42.4 x 2.6mm	1000mm
E033610016	48.3 x 2.0mm	1000mm
E033610017	48.3 x 2.6mm	1000mm

NEWEL POSTS - SQUARE



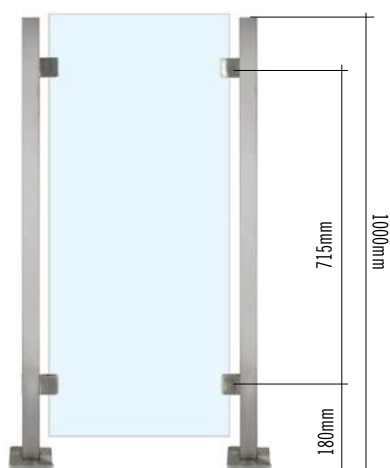
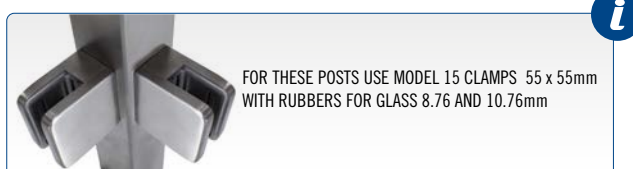
AISI304	AISI316	□ NEWEL POST
Satin Finish		
EQ54004P	EQ64004P	□ 40mm
Mirror Polished		
-	XQ64004P	□ 40mm

Complete with 4 glass clamps, mounting plate and flange canopy



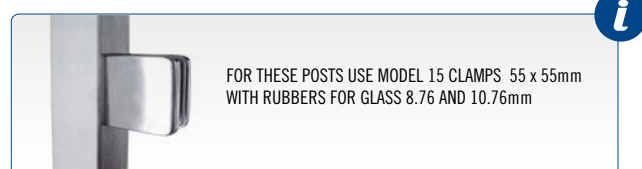
AISI304	AISI316	□ NEWEL POST
Satin Finish		
EQ54004P90	EQ64004P90	□ 40mm
Mirror Polished		
-	XQ64004P90	□ 40mm

Complete with 4 glass clamps with 90° angle, mounting plate and flange canopy



AISI304	AISI316	□ NEWEL POST
Satin Finish		
EQ54002P	EQ64002P	□ 40mm
Mirror Polished		
-	XQ64002P	□ 40mm

Complete with 2 glass clamps, mounting plate and flange canopy



11 NEWEL POSTS - SQUARE

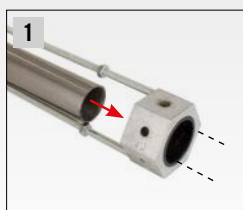
NEWEL POSTS - DRILLING TEMPLATE



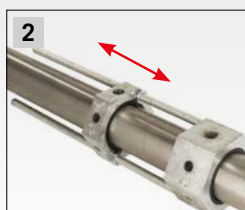
Code No.

E40580

Drilling template, patented for tubes \varnothing 33.7 - 42.4 - 48.3mm.
Allows \varnothing 7 - 9 - 11mm holes to be drilled for threaded inserts and holes for
M5 - M6 - M8 threadings



Place the tube inside the template



Insert the second accessory and adjust it according to the selected spacing of the holes. Lock it with the supplied nuts



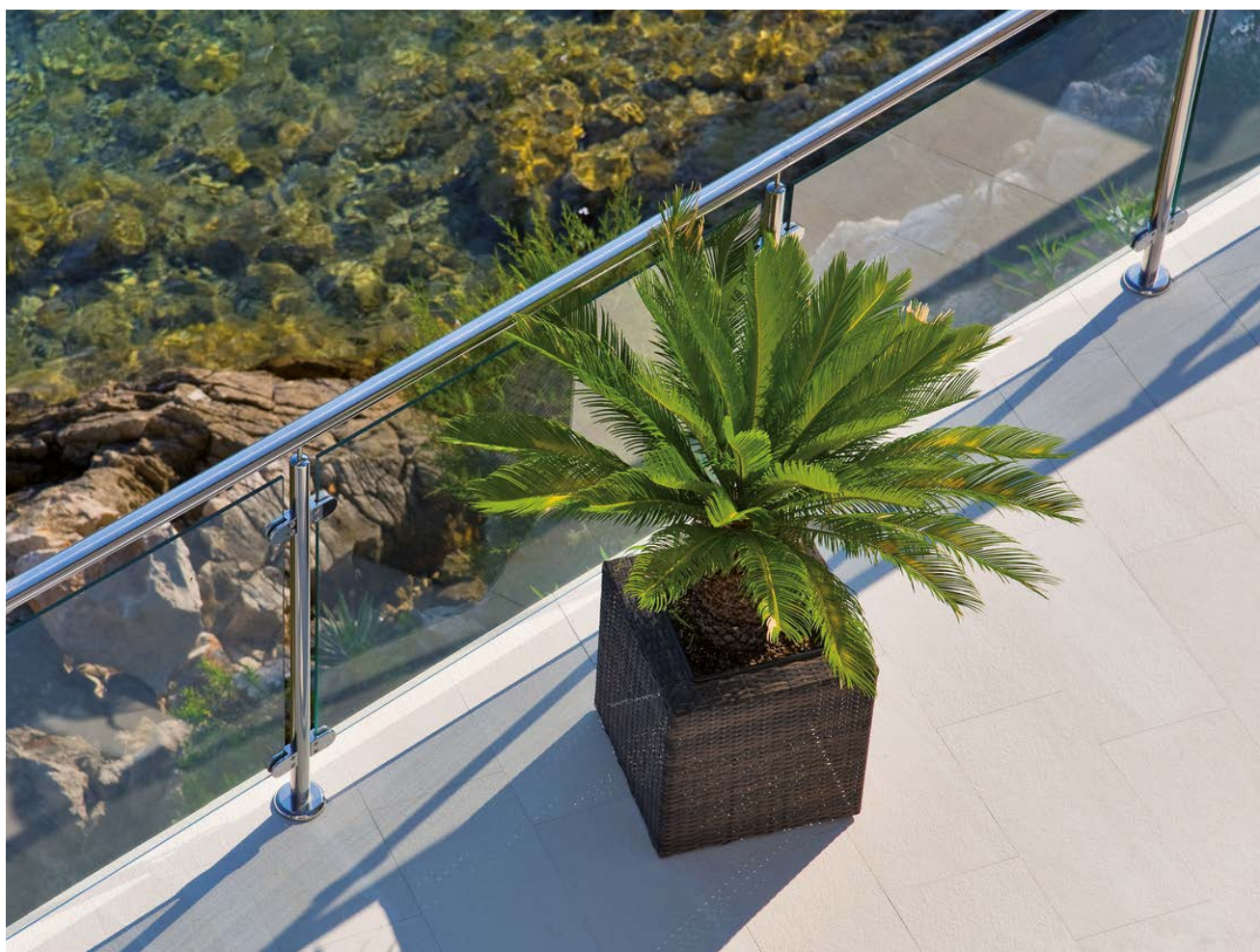
Drill the first hole



Drill the second hole. For safety, lock the template with a drill bit or other tool



Place the template to execute the subsequent holes. Lock it by putting a drill bit in the hole just drilled





**TO PLACE AN ORDER CONTACT YOUR
LOCAL SERVICE CENTRE**



www.aalco-handrail.com