

12 ANCHORAGE FITTINGS

| | |
|--------------------|-----------|
| ANCHORAGE FITTINGS | 128 |
| RISKLESS | 129 |
| LATERAL | 130 - 131 |
| DISCS & FLANGES | 132 - 133 |

12 ANCHORAGE FITTINGS



RUBBER MALLET TO BE USED



PRODUCT TO BE GLUED WITH E4054



ASSEMBLY WITH ALLEN KEY



PRODUCT TO BE WELDED



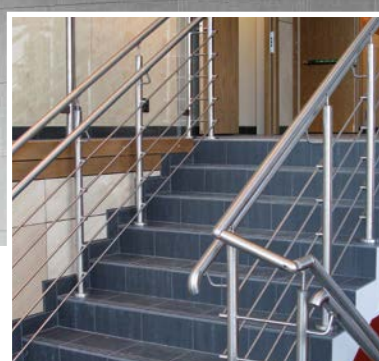
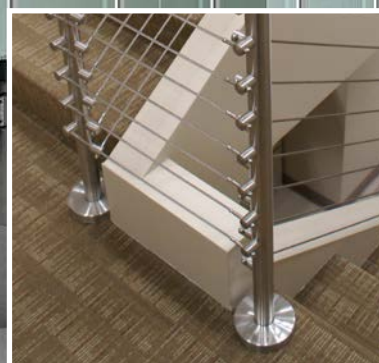
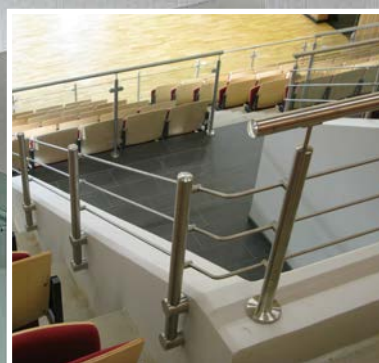
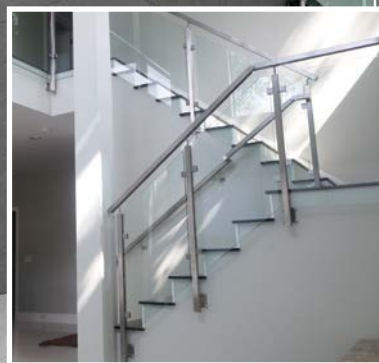
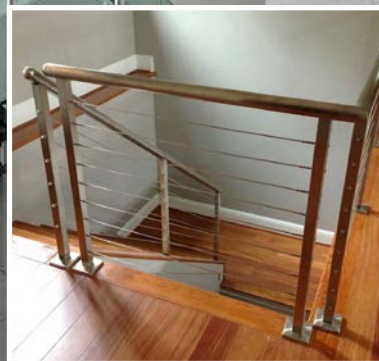
ANTI-CLIMB PRODUCT



SUPER STRONG, HIGH RESISTANT PRODUCT



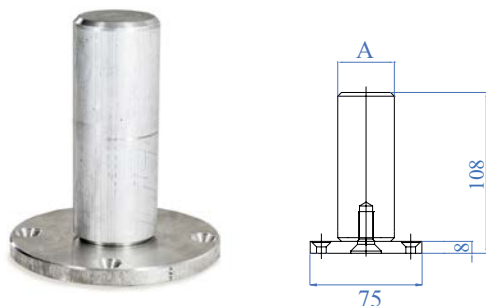
We supply a comprehensive range of anchorage fittings, including baseplates and covers, flanges and shaped flanges in various sizes, designs and finishes. All designed to enable ease of assembly, the fittings are strong and meet the planning and aesthetic requirements of varied applications. Included in the range is the Riskless system, reinforced to strengthen the anchorage points of the newel post in a vertical installation. The system has been devised in accordance with the regulations regarding rail safety, with in-depth studies and calculations to produce a system with enhanced rigidity.



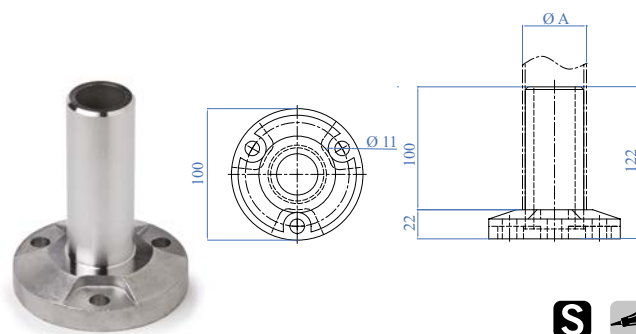
12 ANCHORAGE FITTINGS

ANCHORAGE FITTINGS

Floor anchoring with aluminium reinforcement



| ALUMINIUM | DIMENSIONS | A | FOR TUBE |
|-----------|---------------------------------|--------|----------------|
| E021400 | Ø 75 x 8mm - 4 holes Ø 6.5mm | Ø 38mm | Ø 42.4 x 2.0mm |



| AISI316 | FOR TUBE A |
|-----------|----------------|
| E40310 | Ø 42.4 x 2.0mm |
| E40310/26 | Ø 42.4 x 2.6mm |
| E40320 | Ø 48.3 x 2.0mm |
| E40320/26 | Ø 48.3 x 2.6mm |

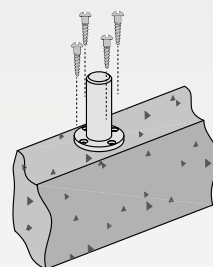
PRODUCTS TO BE USED TOGETHER WITH E021400



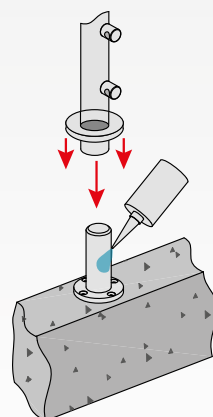
Flange covers

| AISI304 | AISI316 | DIMENSIONS | HOLE | HEIGHT |
|---------|---------|------------|----------|--------|
| E0191 | - | Ø 85mm | Ø 34.5mm | 15mm |
| E019 | E019316 | Ø 85mm | Ø 43.0mm | 15mm |
| E020 | E4072 | Ø 105mm | Ø 43.0mm | 15mm |

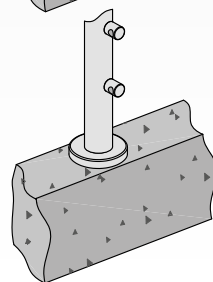
This anchor system makes the post stronger, particularly on shallower floors



- 1 Fix the anchorage to the floor



- 2 Apply a layer of adhesive and then position the post with the flange canopy

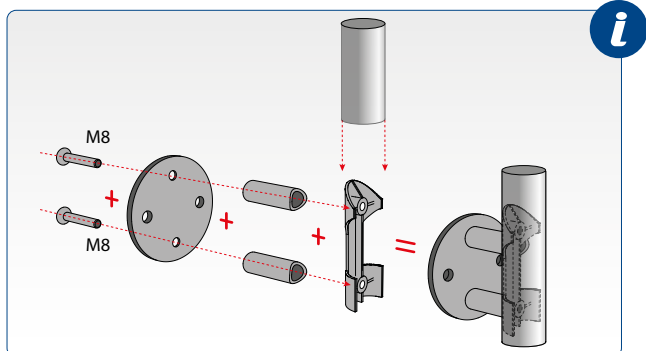


ANCHORAGE FITTINGS - RISKLESS

E400/C has been devised in accordance with current legislation on railing safety. After an in-depth study and extensive calculations, E400/C can be installed laterally to strengthen the anchoring points of the post, making the entire structure more rigid, more resistant and therefore safer.

Installation with traditional flange

Installation with reinforced flange E400/C



+15% MORE RESISTANT THAN THE PREVIOUS MODEL.

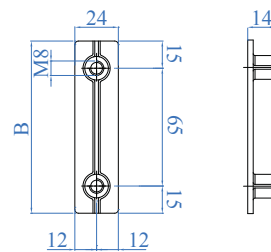
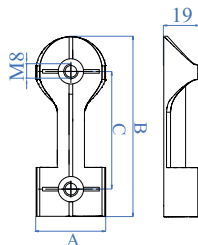
Better adhesion of article E400/C to the tube, thanks to the strengthening elements on the perimeter wall.

Quick and easy to insert, thanks to its rounded form, which allows an easier insertion.

Greater safety and resistance, through deeper screw threads and a structure which is much bigger than typical anchoring systems.

Easy to move and to remove in the event of incorrect installation as it is easier to grip.

Greater rigidity, due to the strengthening element in the middle.

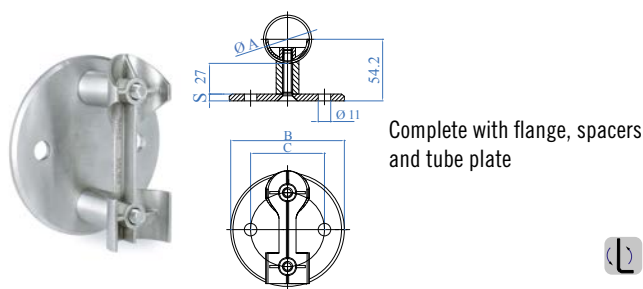


| AISI304 | FOR TUBE A | B | C |
|---------|----------------|-------|-------|
| E400/C | Ø 42.4 x 2.0mm | 99mm | 65mm |
| E408 | Ø 42.4 x 2.0mm | 134mm | 100mm |

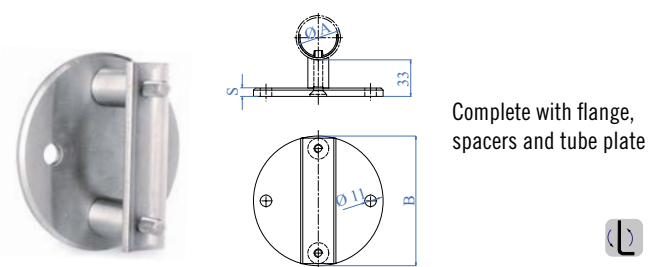
| AISI304 | FOR TUBE A | B |
|---------|------------|------|
| E409 | 40 x 40mm | 95mm |

12 ANCHORAGE FITTINGS - RISKLESS

ANCHORAGE FITTINGS - LATERAL

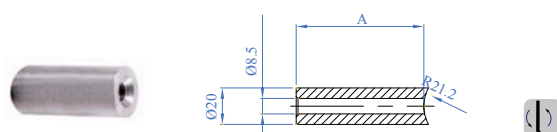


| AISI304 | AISI316 | FOR TUBE A | B | C | S |
|-----------------|----------|----------------------------------|---------|-------|-----|
| E113 | E113316 | Ø 42.4 x 2.0mm | Ø 100mm | 65mm | 6mm |
| E111 | - | Ø 42.4 x 2.0mm | Ø 125mm | 100mm | 8mm |
| - | E1110316 | Flat face | Ø 100mm | 65mm | 6mm |
| Mirror Polished | | | | | |
| - | X113316 | Ø 42.4 x 2.0mm Ø 43.0 x 1.5mm | Ø 100mm | 65mm | 6mm |



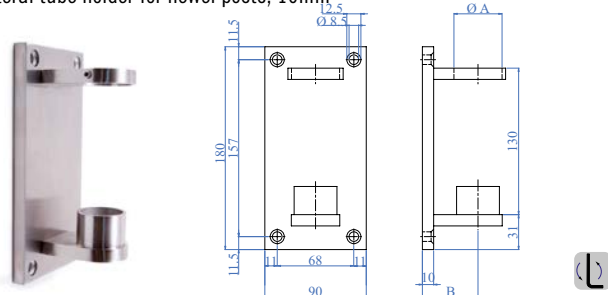
| AISI304 | FOR TUBE A | B | C |
|----------|----------------|---------|-----|
| E113/337 | Ø 33.7 x 2.0mm | Ø 100mm | 6mm |

Extra spacer for item E113



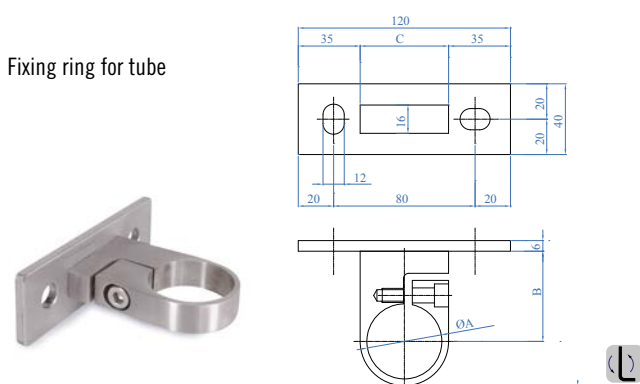
| AISI304 | FOR TUBE | A |
|----------|----------------|------|
| E2300/50 | Ø 42.4 x 2.0mm | 50mm |
| E2300/70 | Ø 42.4 x 2.0mm | 70mm |

Lateral tube holder for newel posts, 10mm



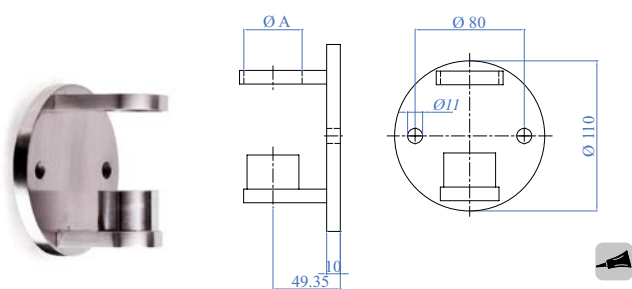
| AISI304 | AISI316 | FOR TUBE A | B |
|----------|---------|----------------|------|
| E406/304 | E406 | Ø 42.4 x 2.0mm | 49mm |
| - | E407 | Ø 48.3 x 2.0mm | 57mm |

Fixing ring for tube



| AISI304 | FOR TUBE A | B | C |
|---------|------------|------|------|
| E11740 | Ø 42.4mm | 51mm | 51mm |
| E11760 | 40 x 40mm | 59mm | 48mm |

ANCHORAGE FITTINGS - LATERAL

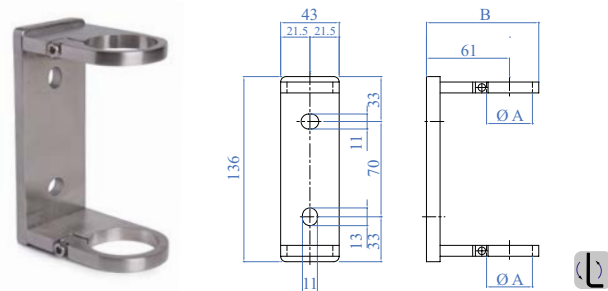


AISI316 FOR TUBE A

E40350 Ø 42.4 x 2.0mm

E40350/26 Ø 42.4 x 2.6mm

E40360/26 Ø 48.3 x 2.6mm



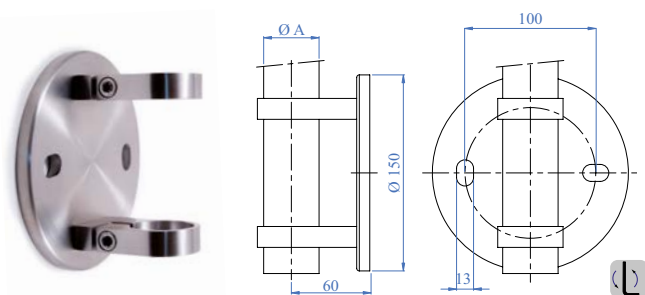
AISI316 FOR TUBE A

E116200 Ø 42.4mm

84mm

E116300 40 x 40mm

84mm

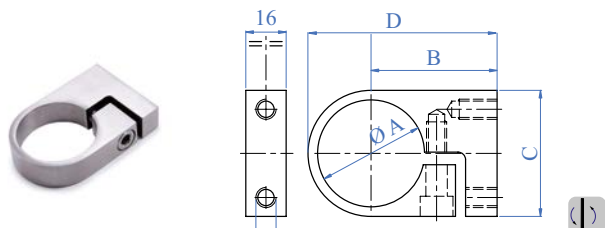


AISI304 AISI316 FOR TUBE A

E116 E116316 Ø 42.4mm

E118 - Ø 48.3 x 2.0mm

Fixing ring for tube



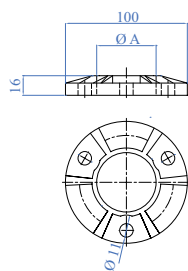
AISI304 FOR TUBE A

E117 Ø 42.4mm 51mm 50mm 76mm

E11710 Ø 48.3mm 59mm 55mm 87mm

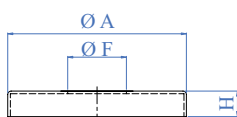
E11720 40 x 40mm 59mm 48mm 83mm

ANCHORAGE FITTINGS - DISCS & FLANGES



| AISI316 | DIMENSIONS | EXTERNAL HOLES | CENTRAL HOLE A |
|---------|--------------|----------------|----------------|
| E40820 | Ø 100 x 16mm | 3 x Ø 11mm | Ø 43mm |
| E40830 | Ø 100 x 16mm | 3 x Ø 11mm | Ø 49mm |

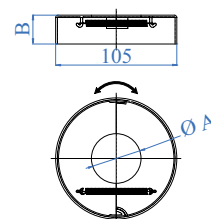
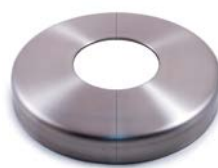
FLANGE COVERS



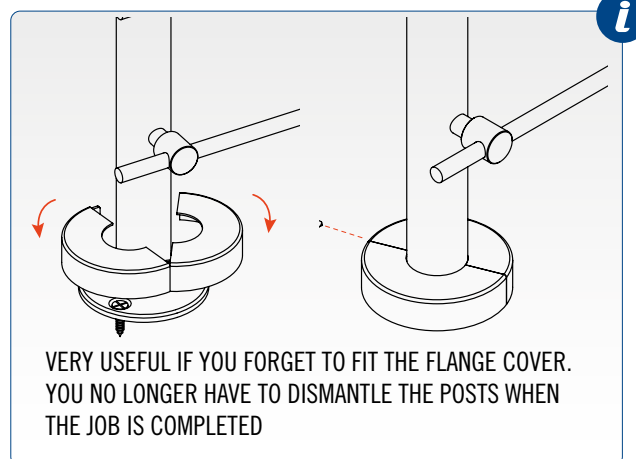
Satin finish with grain size 240, thickness 1.5mm

| AISI304 | AISI316 | DIMENSION A | HOLE F | HEIGHT H |
|---------|---------|-------------|-----------|----------|
| E020/C | E4072/C | Ø 105mm | Ø 43.0mm | 25mm |
| E0201/C | E4073 | Ø 105mm | Ø 49.0mm | 25mm |
| E02011 | - | Ø 105mm | Ø 51.50mm | 25mm |
| E0203 | - | Ø 129mm | Ø 43.0mm | 25mm |
| E0204 | E4075 | Ø 129mm | Ø 49.0mm | 25mm |
| - | E4076 | Ø 145mm | Ø 49.0mm | 25mm |

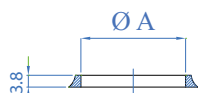
Flange canopy that can be opened



| AISI304 | AISI316 | FOR TUBE A | B |
|---------|-----------|-----------------|------|
| E02071 | E02071316 | Ø 42.4 - 43.0mm | 25mm |
| E02072 | E02072316 | Ø 48.3mm | 25mm |

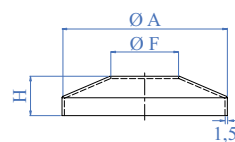


ANCHORAGE FITTINGS - DISCS & FLANGES

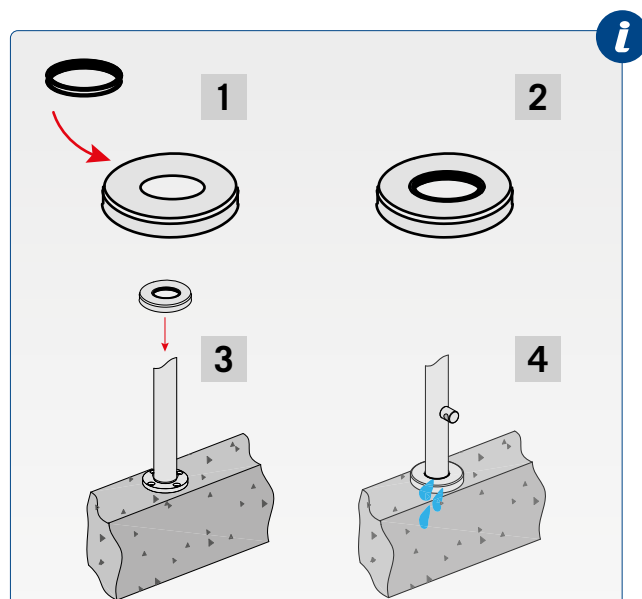


Transparent rubber gasket

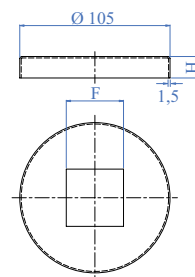
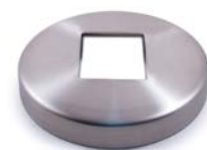
| RUBBER | FOR TUBE A | QUANTITY PER BOX |
|--------|----------------|------------------|
| E02081 | Ø 42.4 x 2.0mm | 10 pcs. |
| E02082 | Ø 48.3 x 2.0mm | 10 pcs. |



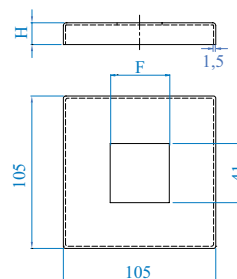
| AISI304 | AISI316 | DIMENSION A | HOLE F | HEIGHT H |
|---------|-----------|-------------|----------|----------|
| E02062 | E02062316 | 85mm | Ø 43.0mm | 25mm |
| E02064 | - | 105mm | Ø 43.0mm | 25mm |



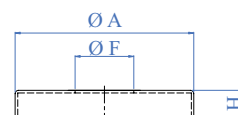
INSERT THE RUBBER GASKET INSIDE THE FLANGE COVER, TO PREVENT MOISTURE INGRESS.



| AISI304 | DIMENSION | HOLE F | HEIGHT H |
|---------|-----------|-----------|----------|
| E02051 | Ø 105mm | 41 x 41mm | 15mm |



| AISI304 | AISI316 | DIMENSIONS | HOLE F | HEIGHT H |
|---------|-----------|-------------|-----------|----------|
| E02052 | E02052316 | 105 x 105mm | 41 x 41mm | 15mm |



Satin finish with grain size 240, thickness 1.5mm

| AISI304 | AISI316 | DIMENSIONS A | HOLE F | HEIGHT H |
|---------|----------|--------------|----------|----------|
| E0180 | - | Ø 45mm | Ø 12.5mm | 10mm |
| E0185 | E0185316 | Ø 70mm | Ø 12.5mm | 12mm |
| E0182 | E4070 | Ø 76mm | Ø 12.5mm | 12mm |