

14 CURVES & FITTINGS

COVER FITTINGS FOR ROUND BAR

142 - 143

TUBE FITTINGS

144 - 149

14 CURVES & FITTINGS



RUBBER MALLET TO BE USED



PRODUCT TO BE GLUED WITH E4054



ASSEMBLY WITH ALLEN KEY



PRODUCT TO BE WELDED



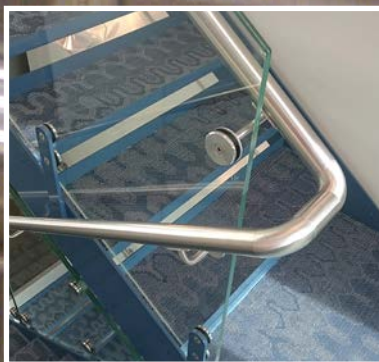
ANTI-CLIMB PRODUCT



SUPER STRONG, HIGH RESISTANT PRODUCT



This range of connectors has been developed specifically to create a smooth, elegant finish, providing a secure connection between the tube profiles which hides any imperfections from the cut ends. The ABS and glass fibre push-fit connection ensures simple fixing of the tubes without the need for a hammer, ensuring a safe and secure assembly for various angles and configurations. The fittings are available in stainless steel and Zamac finishes to perfectly match the chosen handrail.



14 CURVES & FITTINGS

CURVES & FITTINGS - COVER FITTINGS FOR ROUND BAR



Hides the cutting defects on tube

COVERS THE DEFECTS

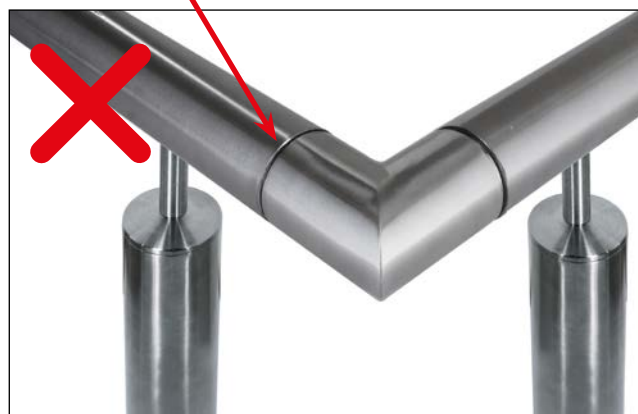
The quality of the cutting is less important, as cut ends are concealed

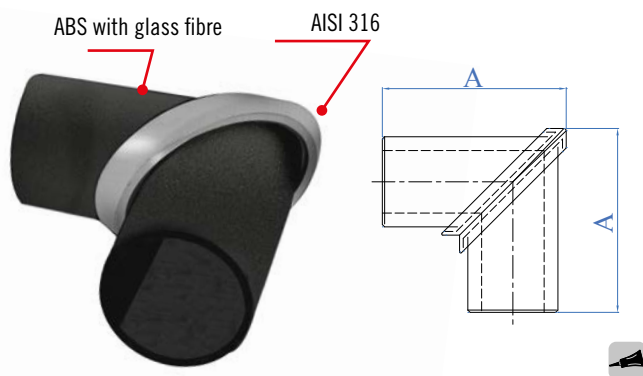
EASY AND QUICK

Fixing the joints (in ABS and glass fibre) on the tube is fast and simple - without using a hammer

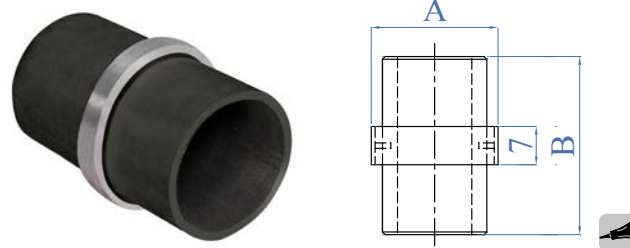
STRONG

As they are made of ABS and glass fibre, assembly of the joints is made safer and more secure

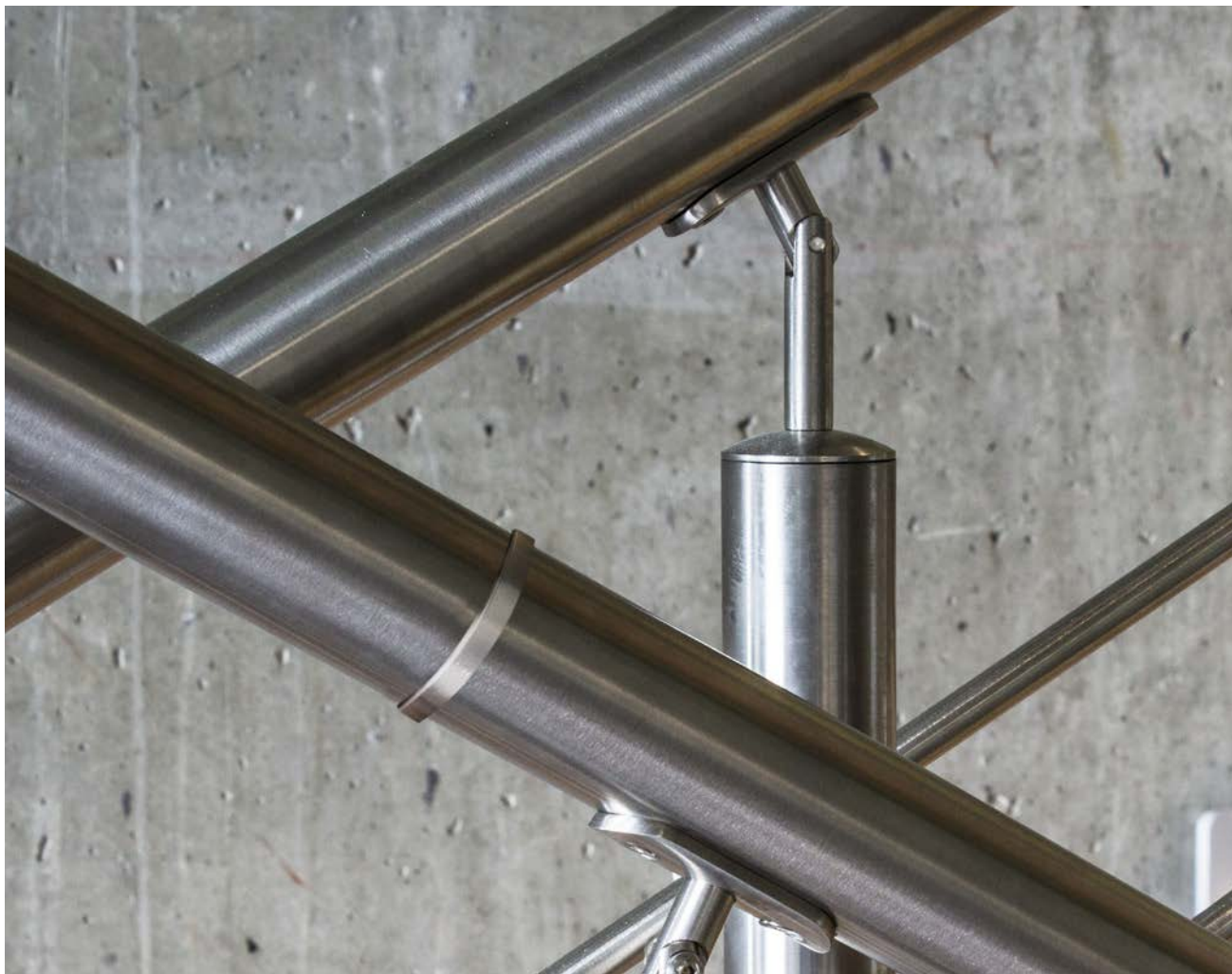
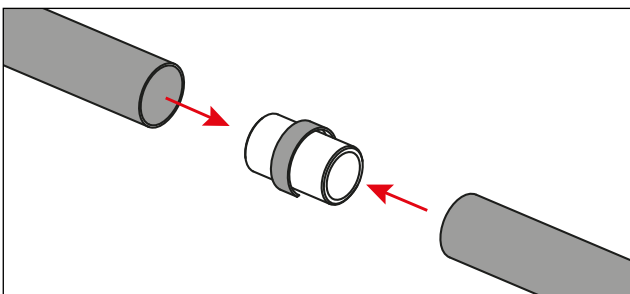
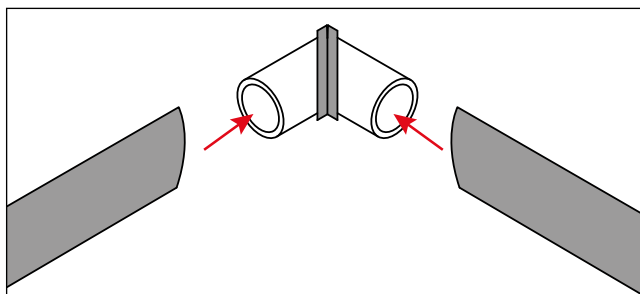




AISI316	FOR TUBE	A
E1200420	Ø 42.4 x 2.0mm	80mm

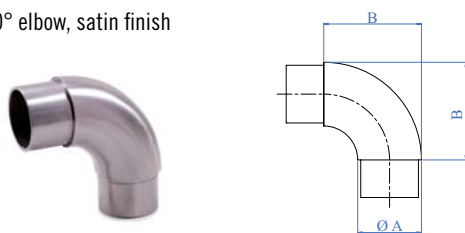


AISI316	FOR TUBE	A	B
E1200320	Ø 42.4 x 2.0mm	45mm	65mm

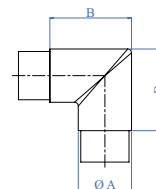


CURVES & FITTINGS - TUBE FITTINGS

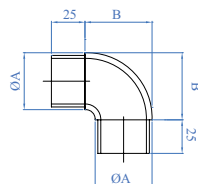
90° elbow, satin finish



AISI304	AISI316	ZAMAC RAW	FOR TUBE A	B
E450/304	E450	I450	Ø 42.4 x 2.0mm	65mm
-	E450/26	-	Ø 42.4 x 2.5mm	65mm
E2002/304	E2002	-	Ø 48.3 x 2.0mm	73mm
-	E2002/26	-	Ø 48.3 x 2.5mm	73mm
-	E2004	-	Ø 50.8 x 2.0mm	78mm
Mirror Polished				
-	X450	-	Ø 42.4 x 2.0mm	65mm
-	X450/43	-	Ø 43.0 x 1.5mm	65mm

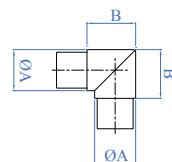


AISI304	AISI316	ZAMAC RAW	FOR TUBE A	B
E451/304	E451	I451	Ø 42.4 x 2.0mm	65mm
-	E451/26	-	Ø 42.4 x 2.6mm	65mm
-	E2012	-	Ø 48.3 x 2.0mm	67mm
-	E2012/26	-	Ø 48.3 x 2.5mm	67 mm
-	E2014	-	Ø 50.8 x 2.0mm	78mm
Mirror Polished				
-	X451	-	Ø 42.4 x 2.0mm	65mm
-	X451/43	-	Ø 43.4 x 1.5mm	65mm



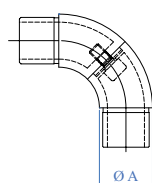
AISI304	FOR TUBE A	B
E2006/304	Ø 42.4 x 2.0mm	51mm

90° angle, satin finish



AISI304	AISI316	FOR TUBE A	B
E2023	E2023316	Ø 42.4 x 2.0mm	50mm
E2024	E2024316	Ø 48.3 x 2.0mm	68mm

Articulated elbow, satin finish



AISI304	AISI316	FOR TUBE A
E4471/304	E4471	Ø 42.4 x 2.0mm
-	E4471/26	Ø 42.4 x 2.6mm
-	E4472	Ø 48.3 x 2.0mm
-	E4473/26	Ø 60.3 x 2.6mm
Mirror Polished		
-	X4471	Ø 42.4 x 2.0mm
-	X4471/43	Ø 43.0 x 1.5mm

THESE PRODUCTS CAN BE USED WITH ITEMS
E011971, E011971316 AND E011973316



THESE PRODUCTS CANNOT BE USED WITH ITEMS
E011971, E011971316 AND E011973316



CURVES & FITTINGS - TUBE FITTINGS



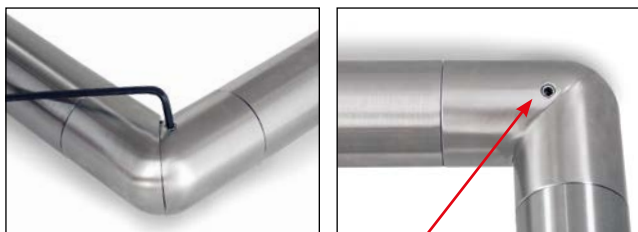
1 CONNECT THE JUNCTION TO THE TUBE AND FIX IT WITH THE APPROPRIATE GLUE



2 CONNECT THE TWO EXTREMITIES OF THE JUNCTION

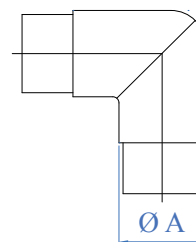


3 TWIST THEM UNTIL THE REQUIRED ANGLE - FROM 90° TO 180° - IS REACHED



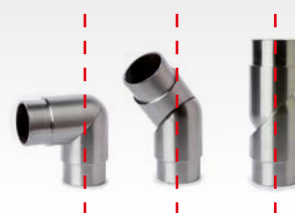
4 SECURE THE COMPONENTS WITH AN ALLEN KEY

Articulated tube fitting, satin finish



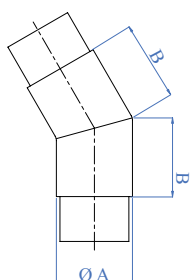
AISI304	AISI316	FOR TUBE A
E5587/304	E5587	Ø 42.4 x 2.0mm

THIS ITEM KEEPS THE HANDRAIL IN AXIS HAVING A ROTATION POINT PERFECTLY CENTRED



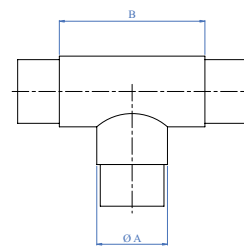
CURVES & FITTINGS - TUBE FITTINGS

45° angle, satin finish



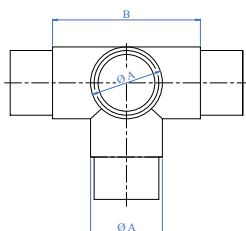
AISI304	AISI316	ZAMAC	FOR TUBE A	B
-	E2019	-	Ø 40.0 x 2.0mm	50mm
E2015/304	E2015	I2015	Ø 42.4 x 2.0mm	50mm
-	E2015/26	-	Ø 42.4 x 2.5mm	50mm
-	E2017	-	Ø 48.3 x 2.0mm	55mm
-	E2017/26	-	Ø 48.3 x 2.5mm	55mm

3-way flush "T", satin finish



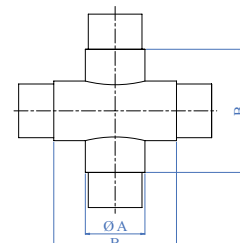
AISI316	FOR TUBE A	B
E453	Ø 42.4 x 2.0mm	100mm
E453/26	Ø 42.4 x 2.6mm	100mm
E2042	Ø 48.3 x 2.0mm	88mm
E2042/26	Ø 48.3 x 2.5mm	88mm

4-way flush "T", satin finish



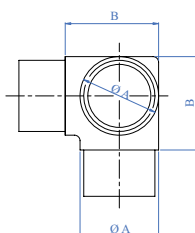
AISI316	FOR TUBE A	B
E2035	Ø 42.4 x 2.0mm	89mm
E2035/26	Ø 42.4 x 2.6mm	89mm
E2037	Ø 48.3 x 2.0mm	90mm
E2038	Ø 60.3 x 2.0mm	107mm

4-way cross, satin finish



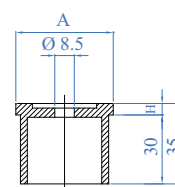
AISI316	FOR TUBE A	B
E2045	Ø 42.4 x 2.0mm	87mm
E2047	Ø 48.3 x 2.0mm	91mm
E2047/26	Ø 48.3 x 2.5mm	91mm

3-way corner, satin finish



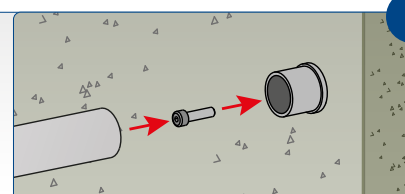
AISI316	FOR TUBE A	B
E203	Ø 42.4 x 2.0mm	65mm
E203/26	Ø 42.4 x 2.5mm	50mm
E2032	Ø 48.3 x 2.0mm	50mm

Round shallow end cap



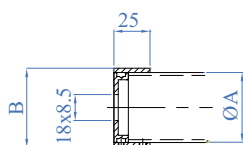
AISI304	AISI316	FOR TUBE A	H
E42420/304	E42420	Ø 42.4 x 2.0mm	5mm

It's possible to anchor the element to a wall or to a flat tube

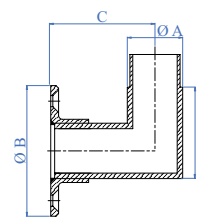


CURVES & FITTINGS - TUBE FITTINGS

Anchor for tube, satin finish



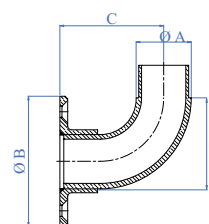
AISI304	AISI316	FOR TUBE A	B
E2070/304	E2070	Ø 42.4mm	48.6mm



AISI316	FOR TUBE A	B	C	D
E4566	Ø 42.4 x 2.0mm	Ø 84mm	80mm	65mm

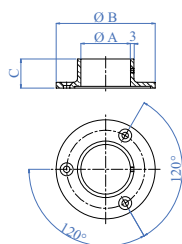


Anchor for tube, satin finish



AISI316	FOR TUBE A	B	C	D
E4561	Ø 42.4 x 2.0mm	Ø 84mm	84mm	65mm
Mirror Polished				
X4561	Ø 42.4 x 2.0mm	Ø 84mm	84mm	65mm
X4561/43	Ø 43.0 x 1.5mm	Ø 85mm	82.5mm	65mm

Anchor for tube, satin finish



AISI304	AISI316	FOR TUBE A	B	C
E456/304	E456	Ø 42.4mm	Ø 84mm	25mm
E2067/304	E2067	Ø 48.3mm	Ø 94mm	28mm
Mirror Polished				
-	X456	Ø 42.4mm	Ø 84mm	25mm

CURVES & FITTINGS - TUBE FITTINGS

IT'S POSSIBLE TO CREATE **FRENCH BALCONIES** USING
E1900310, PAGE 77 AND E2070, PAGE 147



E2070

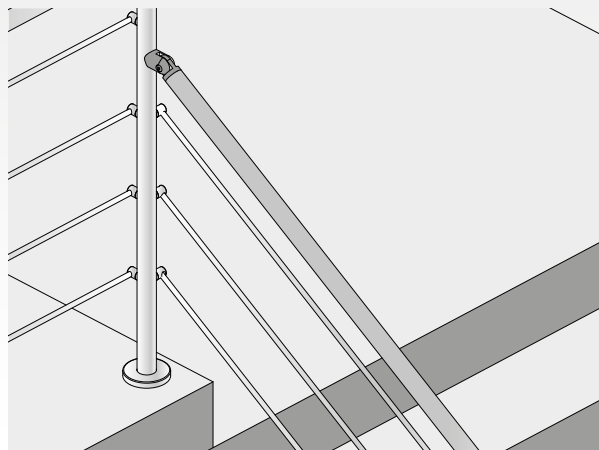


E1900310

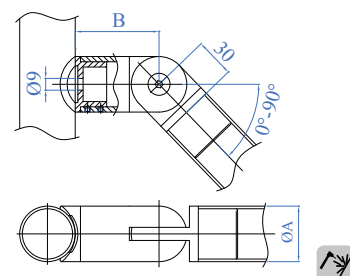


CURVES & FITTINGS - TUBE FITTINGS

CONNECTOR FOR ANCHORING THE HANDRAIL TO THE NEWEL POST



Pivotable connector



AISI316

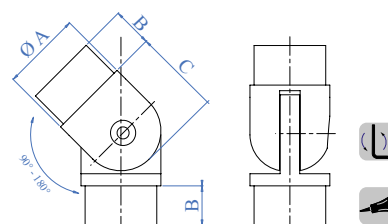
FOR TUBE A

B

E1520120 Ø 42.4 x 2.0mm

64mm

Pivotable connector, satin finish



AISI304

AISI316

ZAMAC

FOR TUBE A

B

C

E446/304 E446 I446 Ø 42.4 x 2.0mm 22mm 53mm

- E4461 - Ø 42.4 x 2.5 mm 22mm 53mm

E4462/304 E4462 - Ø 48.3 x 2.0mm 25mm 59mm

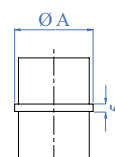
- E4463 - Ø 48.3 x 2.5 mm 25mm 59mm

Mirror Polished

- X446 - Ø 42.4 x 2.0mm 22mm 53mm

- X446/43 - Ø 43.0 x 1.5mm 22mm 53mm

Connector, satin finish



AISI304

AISI316

FOR TUBE A

E455/304 E455 Ø 42.4 x 2.0mm

- E455/26 Ø 42.4 x 2.6mm

- E2062 Ø 48.3 x 2.0mm

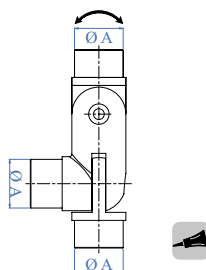
- E2062/26 Ø 48.3 x 2.6mm

Mirror Polished

- X455 Ø 42.4 x 2.0mm

- X455/43 Ø 43.0 x 1.5mm

Multiple joint, pivotable



AISI316

FOR TUBE A

E4491 Ø 42.4 x 2.0mm

E4492 Ø 48.3 x 2.0mm