

15 END CAPS

END CAPS

152 - 153

15 END CAPS



RUBBER Mallet TO BE USED



PRODUCT TO BE GLUED WITH E4054



ASSEMBLY WITH ALLEN KEY



PRODUCT TO BE WELDED



ANTI-CLIMB PRODUCT



SUPER STRONG, HIGH RESISTANT PRODUCT

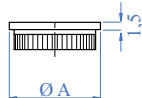


Attention to detail is important in achieving a quality finish in any handrail, balustrade or staircase application. We offer a wide range of decorative, elegant end caps and spheres in various designs and materials to ensure the perfect finishing touch.



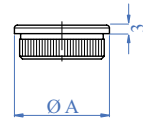
END CAPS

Satin finish, with knurling



AISI303	AISI316	FOR TUBE A
E01151	E01151316	$\varnothing 42.4 \times 2.0\text{mm}$
E01152	-	$\varnothing 48.3 \times 2.0\text{mm}$
E01154	-	$\varnothing 60.3 \times 2.0\text{mm}$
Mirror Polished		
-	X01151316	$\varnothing 42.4 \times 2.0\text{mm}$
-	X01151316/43	$\varnothing 43.0 \times 1.5\text{mm}$

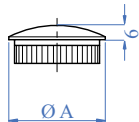
Satin finish, with knurling



AISI316	FOR TUBE A
E4146	$\varnothing 42.4 \times 2.0\text{mm}$
E4147	$\varnothing 48.3 \times 2.0\text{mm}$

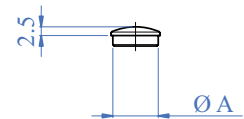
ROUNDED, SOLID END CAPS FOR TUBE

Satin finish, with knurling



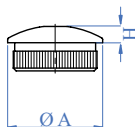
AISI303	AISI316	FOR TUBE A
E0119	E0119316	$\varnothing 42.4 \times 2.0\text{mm}$
E01191	-	$\varnothing 48.3 \times 2.0\text{mm}$
E01173	-	$\varnothing 60.3 \times 2.0\text{mm}$
Mirror Polished		
-	X0119316	$\varnothing 42.4 \times 2.0\text{mm}$
-	X0119316/43	$\varnothing 43.0 \times 1.5\text{mm}$

Satin finish, with knurling



AISI303	AISI316	FOR TUBE A
E01182	E01182316	$\varnothing 12.0 \times 1.5\text{mm}$

Satin finish, with knurling

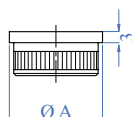


AISI303	AISI316	FOR TUBE A	H
-	E4141	$\varnothing 42.4 \times 2.0\text{mm}$	7mm
E4142	-	$\varnothing 48.3 \times 2.0\text{mm}$	10mm



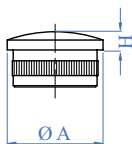
TO BE USED WITH TUBES WITH A MINIMUM WALL THICKNESS. SEE PAGE 136

Hollow



AISI304	AISI316	FOR TUBE A
E4100/304	E4100	Ø 42.4 x 2.0mm

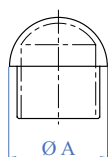
Hollow



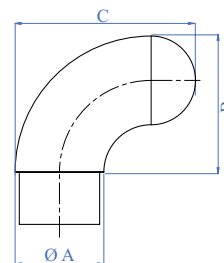
AISI304	AISI316	FOR TUBE A	H
E4120/304	E4120	Ø 42.4 x 2.0mm	9mm
-	E4135/26	Ø 48.3 x 2.5 mm	9mm

SEMI-SPHERICAL END CAPS

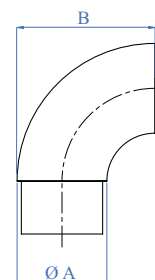
Hollow



AISI303	AISI316	FOR TUBE A
E465/304	E465	Ø 42.4 x 2.0mm
-	E466	Ø 48.3 x 2.0mm
-	E466/26	Ø 48.3 x 2.6mm
Mirror Polished		
-	X465	Ø 42.4 x 2.0mm

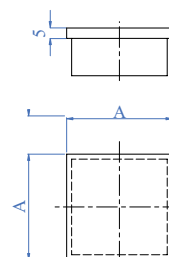


AISI304	AISI316	FOR TUBE A	B x C
E481/304	E481	Ø 42.4 x 2.0mm	80 x 60mm
-	E482	Ø 48.3 x 2.0mm	100 x 75mm
-	E483	Ø 60.3 x 2.0mm	115 x 85mm



AISI304	AISI316	FOR TUBE A	B
E452/304	E452	Ø 42.4 x 2.0mm	55mm
-	E45210	Ø 48.3mm	55mm
Mirror Polished			
-	X452	Ø 42.4 x 2.0mm	55mm

END CAPS FOR SQUARE TUBES



AISI304	AISI316	FOR TUBE A x A
-	E4210	25 x 25 x 2.0mm
-	E4220	30 x 30 x 2.0mm
E4230/304	E4230	40 x 40 x 2.0mm
-	E4240	50 x 50 x 2.0mm