

# 16 HANDRAIL SUPPORTS

HANDRAIL SUPPORTS

156 - 160

16 HANDRAIL SUPPORTS



RUBBER MALLET TO BE USED



PRODUCT TO BE GLUED WITH E4054



ASSEMBLY WITH ALLEN KEY



PRODUCT TO BE WELDED



ANTI-CLIMB PRODUCT



SUPER STRONG, HIGH RESISTANT PRODUCT



A comprehensive range of handrail supports in a variety of designs, sizes and finishes. Available in fixed or adjustable options for both wall mounting and glass mounting, they are suitable for round and flat handrails. Included in the range is a new series of handrail kits, supplied complete with the supports and 2m or 3m tube handrails in stainless steel (satin finish or mirror polished) or wood. Ready to assemble and easy to install, the kits are ideal for less experienced installers.

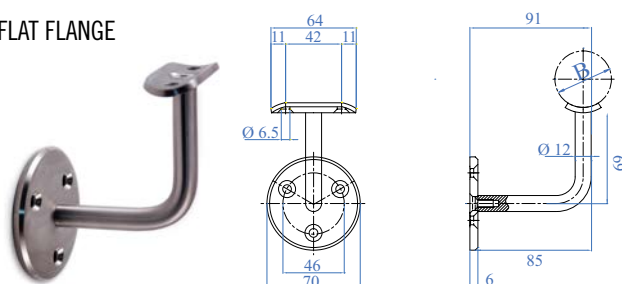


## 16 HANDRAIL SUPPORTS

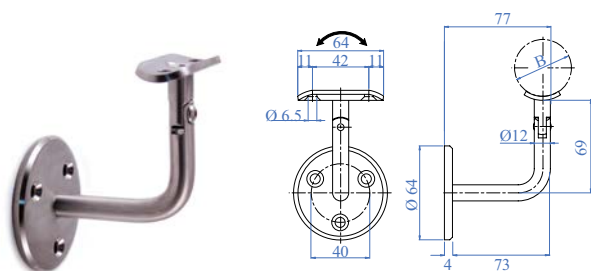


# HANDRAIL SUPPORTS

## FLAT FLANGE

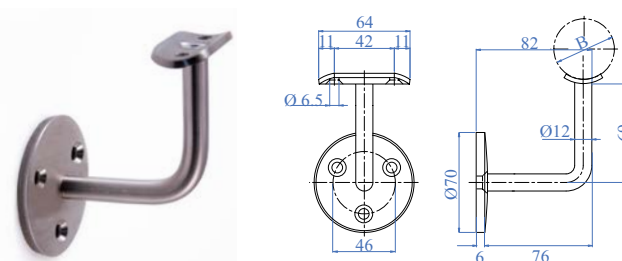


AISI304	AISI316	DESCRIPTION	B
E02230	-	With Internal Thread	Ø 42.4mm
E02232	-	With Internal Thread	Ø 48.3mm



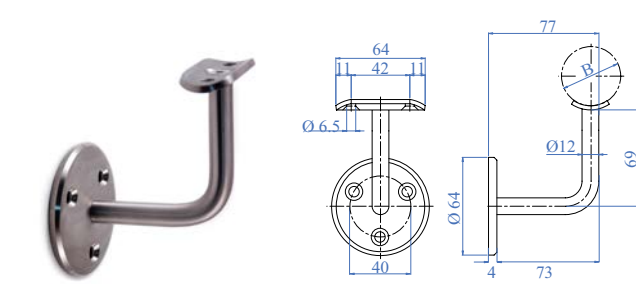
AISI304	AISI316	DESCRIPTION	B
E02231	E02231316	With plate and pivot	Ø 42.4mm
Mirror Polished			
-	X02231316	With plate and pivot	Ø 42.4mm / Ø 43.0mm

## CONVEX FLANGE

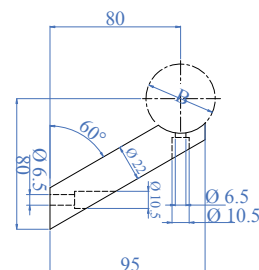


AISI304	AISI316	B
E022431	E022431316	Ø 42.4mm

THE WALL HANDRAIL SUPPORTS CAN BE MATCHED WITH FLANGE CANOPY E0182, ON PAGE 133



AISI304	AISI316	DESCRIPTION	B
E0223	E0223316	Without Thread	Ø 42.4mm
Mirror Polished			
-	X0223316	Without Thread	Ø 42.4mm / Ø 43.0mm



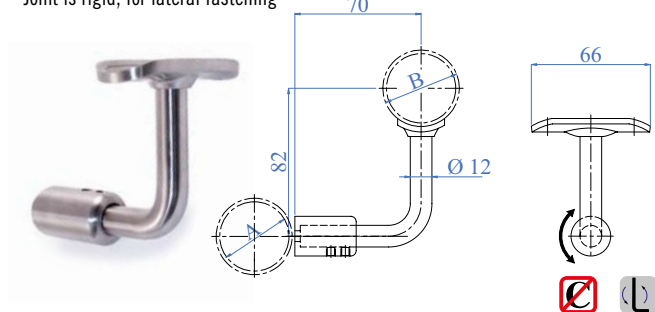
AISI304	B	ANCHOR SURFACE
E034200	Ø 42.4mm	Flat surface



INTERCHANGABLE SADDLES 42/48/60MM Ø, SEE PAGE 159

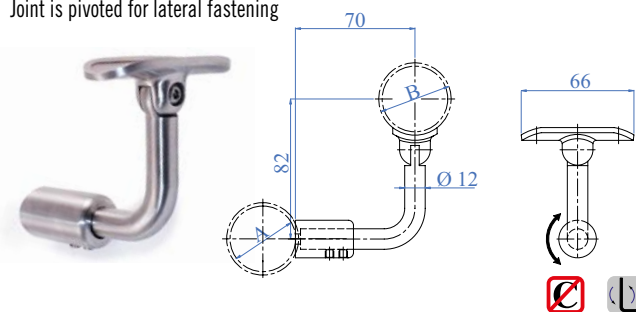


Joint is rigid, for lateral fastening



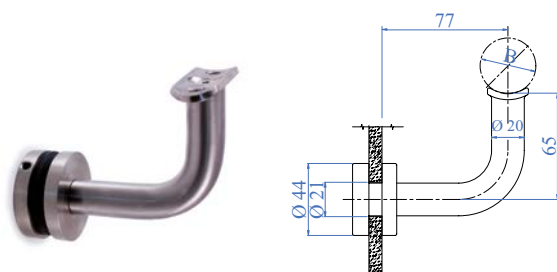
AISI304	AISI316	A	B
E4583/304	E4583	Square	Ø 42.4mm
E4587	E4583/424	Ø 42.4mm	Ø 42.4mm

Joint is pivoted for lateral fastening



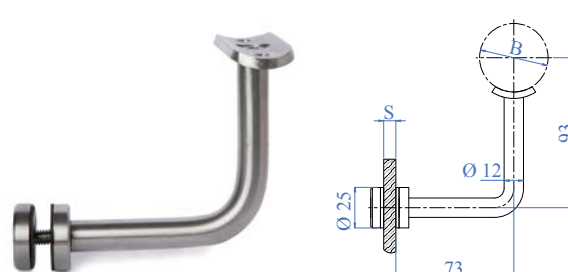
AISI316	A	B
E4584	Square	Ø 42.4mm
E4584/424	Ø 42.4mm	Ø 42.4mm

4 pieces complete with glass clip and mounting plate.



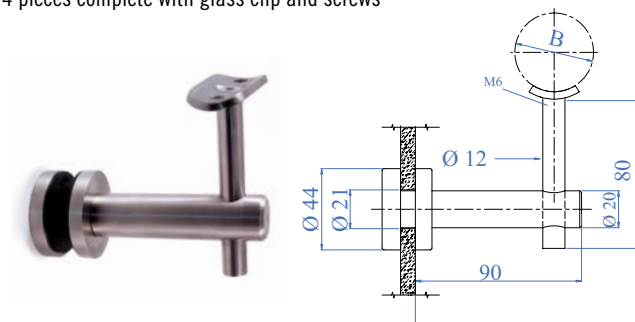
AISI303	AISI316	B	DESCRIPTION
E022/S1	E022/S1316	Ø 42.4 x 2.0mm	For glass thickness 8-22mm Glass to be drilled Ø 21mm
E022/S3	E022/S3316	Ø 60.3 x 2.0mm	For glass thickness 8-22mm Glass to be drilled Ø 21mm

4 pieces complete with glass clip and mounting plate



AISI303	AISI316	B	DESCRIPTION
E035100	E035100316	Ø 42.4 x 2.0mm	For glass thickness 8-22mm Glass to be drilled Ø 15mm

4 pieces complete with glass clip and screws

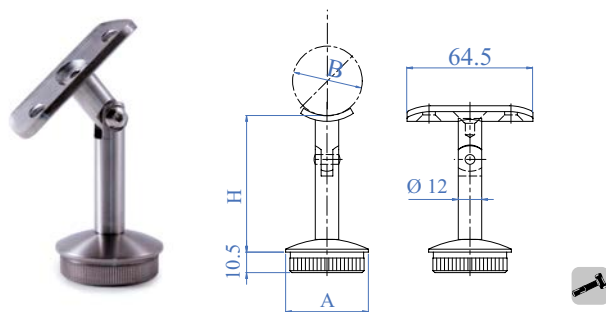


AISI303	AISI316	B	DESCRIPTION
E022/S2	E022/S2316	Ø 42.4 x 2.0mm	For glass thickness 8-22mm Glass to be drilled Ø 21mm



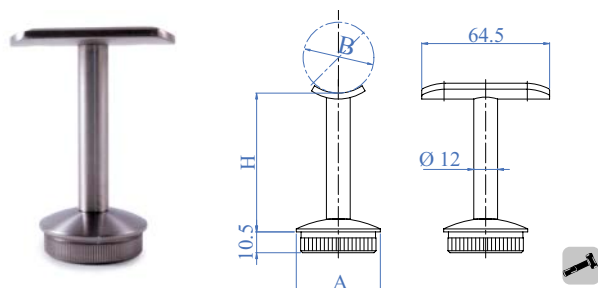
# HANDRAIL SUPPORTS

4 pieces complete with screws and end cap for tube



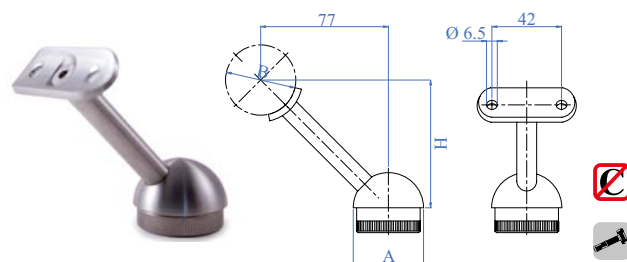
AISI303	AISI316	H	A	B
E030/S	E030/S316	75mm	Ø 42.4 x 2.0mm	Ø 42.4mm
-	E030/S316/26	75mm	Ø 42.4 x 2.5mm	Ø 42.4mm
-	E0302316	75mm	Ø 48.3 x 2.0mm	Ø 42.4mm
-	E0302316/26	75mm	Ø 48.3 x 2.5mm	Ø 42.4mm
E030/S1	-	75mm	Ø 50.8 x 2.0mm	Ø 42.4mm
Mirror Polished				
-	X030/S316	75mm	Ø 42.4 x 2.0mm	Ø 42.4mm
-	X030/S316/43	75mm	Ø 43.0 x 1.5mm	Ø 42.4mm

3 pieces complete with screw and end cap for tube

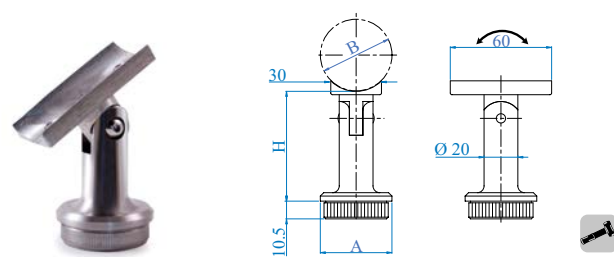


AISI303	AISI316	H	A	B
E031/S1	E031/S1316	75mm	Ø 42.4 x 2.0mm	Ø 42.4mm
-	E031/S1316/26	75mm	Ø 42.4 x 2.6mm	Ø 42.4mm
-	E0312316	75mm	Ø 48.3 x 2.0mm	Ø 42.4mm
E0312/26	E0312316/26	75mm	Ø 48.3 x 2.6mm	Ø 42.4mm
E031/S2	-	75mm	Ø 50.8 x 2.0mm	Ø 42.4mm
Mirror Polished				
-	X031/S1316	75mm	Ø 42.4 x 2.0mm	Ø 42.4mm
-	X031/S1316/43	75mm	Ø 43.0 x 1.5mm	Ø 42.4mm

3 pieces complete with screws and end cap for tube

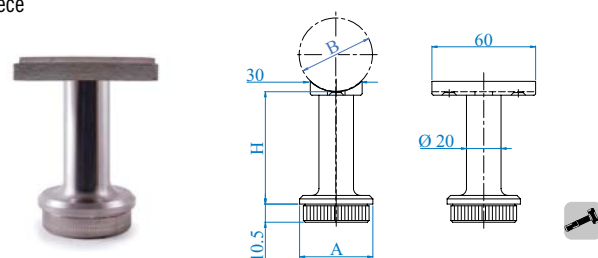


AISI303	AISI316	H	A	B
E038900	E038910	77mm	Ø 42.4 x 2.0mm	Ø 42.4mm



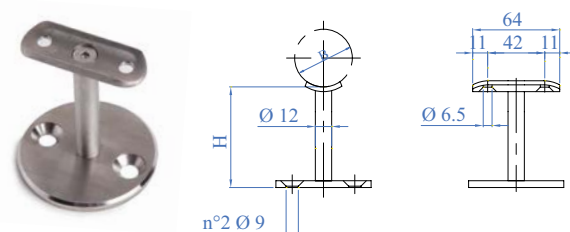
AISI304	H	A	B
E030	57mm	Ø 42.4 x 2.0mm	Ø 42.4 x 2.0mm

1 piece

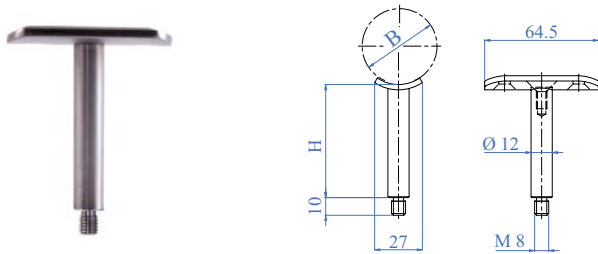


AISI304	H	A	B
E031	57mm	Ø 42.4 x 2.0mm	Ø 42.4 x 2.0mm

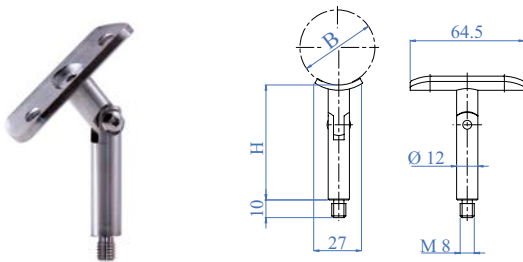
Flanged handrail support



AISI304	AISI316	B	H
-	E0232316	Ø 42.4mm	50mm
E0230	E0230316	Ø 42.4mm	75mm
E0234	E0234316	Ø 42.4mm	100mm



AISI304	H	B
E041400	68mm	Ø 42.4mm



AISI304	H	B
E041410	68mm	Ø 42.4mm



Tube adaptor with a satin finish



AISI316	FOR TUBE	H
E492/26	Ø 48.3 x 2.5mm	14mm

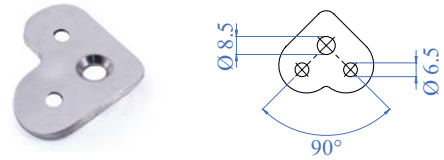
## MOUNTING PLATES



AISI304	AISI316	FOR TUBE
E011971	E011971316	Ø 42.4mm
-	E011973316	Ø 48.3 - Ø 60.3mm

## MOUNTING PLATES

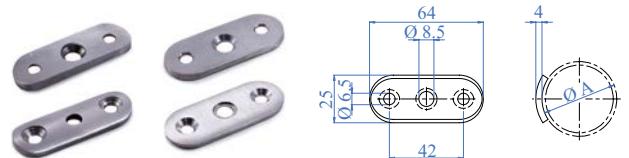
Thickness 4mm



AISI304	AISI316	FOR TUBE
E011970	E011970316	Flat face

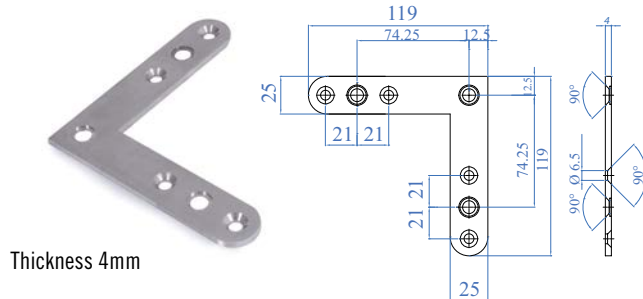
Thickness 4mm

Flat face



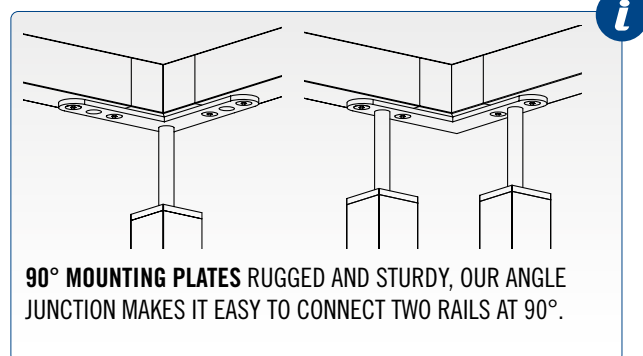
AISI304	AISI316	FOR TUBE
E01197	E01197316	Ø 42.4mm
E011972	E011972316	Ø 48.3 - Ø 60.3mm
E011976	-	Flat face

## 90° MOUNTING PLATES



Thickness 4mm

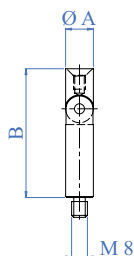
AISI304	AISI316	FOR TUBE
E011977	E011977316	Flat face



**90° MOUNTING PLATES** RUGGED AND STURDY, OUR ANGLE JUNCTION MAKES IT EASY TO CONNECT TWO RAILS AT 90°.

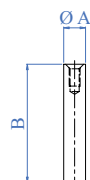
# HANDRAIL SUPPORTS

Pivot with external Thread M8 and internal Thread M6

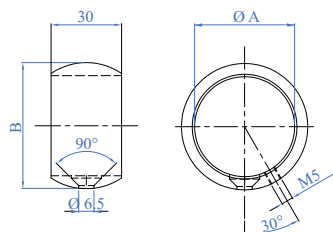


AISI304	DIMENSIONS A x B	PIVOTABLE
E01193	Ø 14 x 65mm	Yes

With one internal thread M6

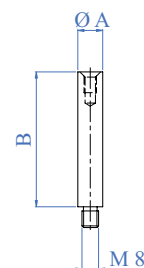


AISI316	DIMENSIONS A x B
E0119441316	Ø 14 x 115mm - Round head



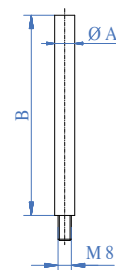
AISI316	FOR TUBE A	B
E468/424	Ø 42.4mm	53.6mm

Fixed with external Thread M8 and internal Thread M6



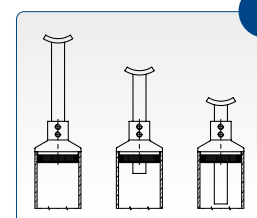
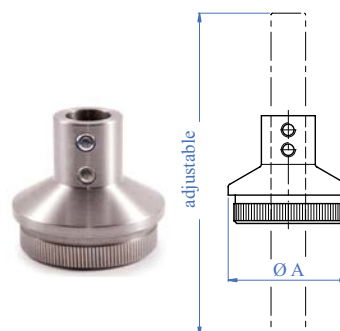
AISI304	AISI316	DIMENSIONS A x B
E011941	E011941316	Ø 12 x 65mm
E01194	-	Ø 14 x 65mm
E011943	-	Ø 12 x 115mm

Fixed with external Thread M8



AISI304	DIMENSIONS A x B
E72214	Ø 12 x 70mm
E72228	Ø 12 x 90mm
E72229	Ø 12 x 120mm

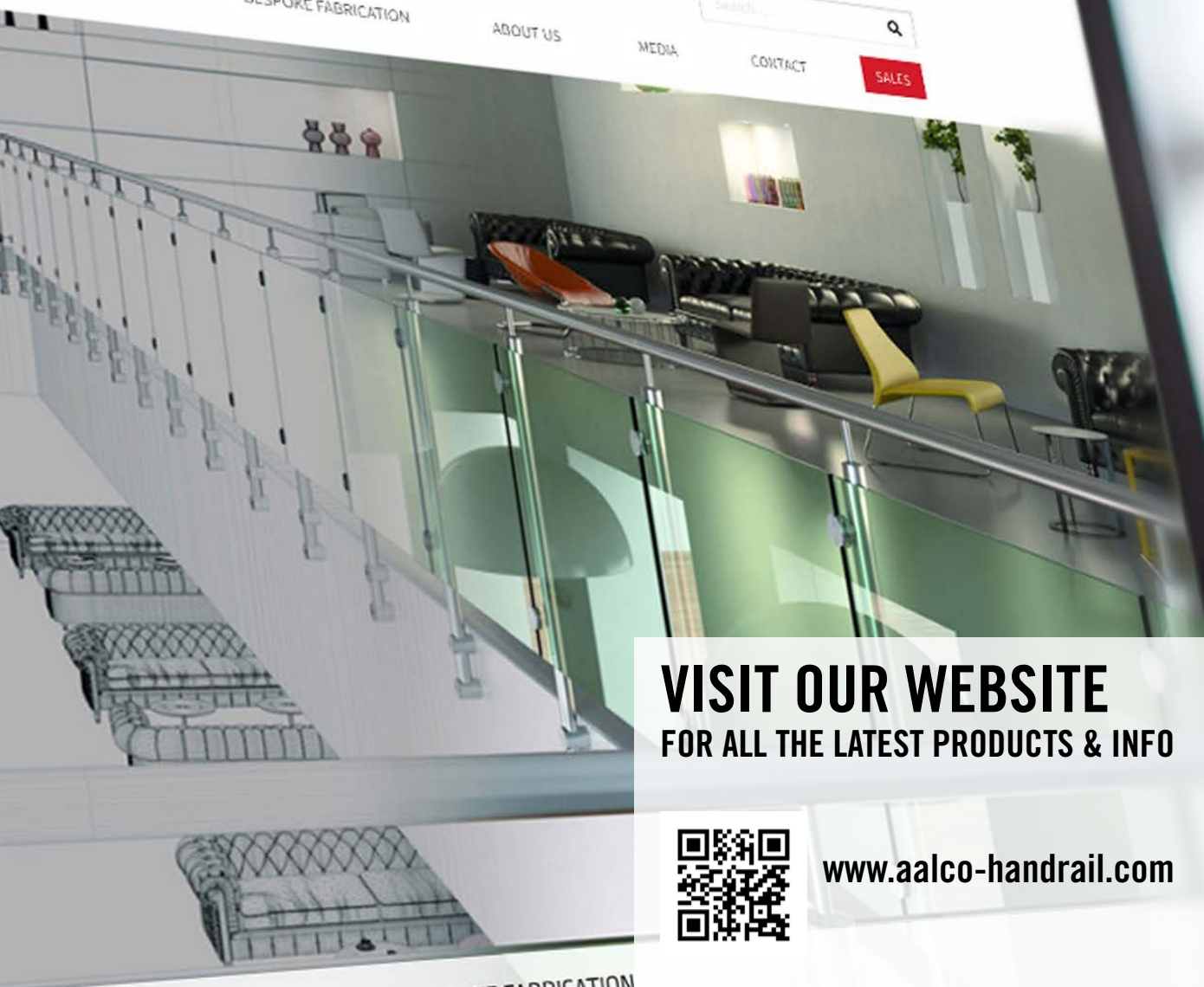
END CAPS FOR HANDRAIL HOLDERS



Grub screws included

AISI303	AISI316	FOR TUBE A	THROUGH HOLE
E01196100	E02196100	Ø 42.4 x 2.0mm	Ø 12.2mm





**VISIT OUR WEBSITE**  
FOR ALL THE LATEST PRODUCTS & INFO



[www.aalco-handrail.com](http://www.aalco-handrail.com)

**BESPOKE FABRICATION**

Specialist in the design and fabrication of balustrade and handrail systems to customers exact specifications

[View System](#)

