

18 WOODINOX SYSTEM

WOOD - X PRO

172 - 173

WOODINOX SYSTEM

174 - 176

SLOTTED TUBE FITTINGS

177

18 WOODINOX SYSTEM



RUBBER MALLET TO BE USED



PRODUCT TO BE GLUED WITH E4054



ASSEMBLY WITH ALLEN KEY



PRODUCT TO BE WELDED



ANTI-CLIMB PRODUCT



SUPER STRONG, HIGH RESISTANT PRODUCT



Combine stainless steel with a natural and traditional material - wood.

Our Woodinox line allows customers to enjoy the resistance of stainless steel with the warmth of wood.



18 WOODINOX SYSTEM

WOOD - X PRO

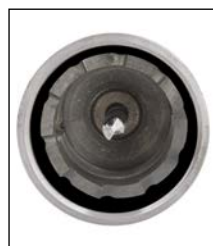


Revolutionary tool that allows you to combine a wooden handrail with the traditional range of Aalco handrail fittings.



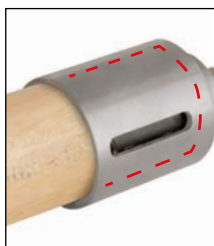
QUICK

Very quick! Only 5 seconds needed to create a clutch channel



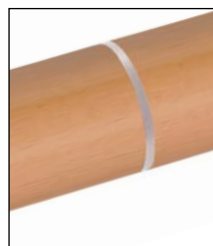
QUALITY

The self-lubricating teflon coating ensures the surface of the woodwork remains intact



EASY

Thanks to the template, you can keep the handrail and the tool aligned throughout the machining phase



PROFESSIONAL

Thanks to the internal fixing system, only the main parts remain visible



REDUCES STOCK

Using the standard fittings, you will not have to stock wood accessories and can therefore reduce your stock costs



COMPACT

Thanks to its compact size it is possible to transport it anywhere and work directly on site



SAFE

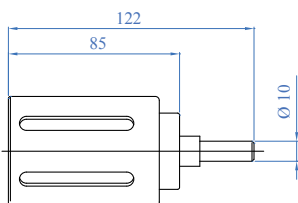
Thanks to a ball bearing system, it is possible to hold the socket securely throughout the operation



VERSATILE

It can be used with all drills

WOOD - X PRO



AISI316	FOR TUBE
E91070	Ø 42.4mm
E91075	Ø 48.3mm

WOOD	DESCRIPTION	LENGTH	COLOUR
E693/3000	Ø 42.4mm	3000mm	Natural
E694/3000/G	Ø 48.3mm	3000mm	Raw finish, unpainted
E693/3000/G	Ø 42.4mm	3000mm	Raw finish, unpainted

TO SEE ALL THE ACCESSORIES THAT YOU CAN COMBINE, GO TO THE 'PROFILE SYSTEMS' SECTION & 'CURVES & FITTINGS' SECTION



A WIDE CHOICE OF WOOD ON REQUEST

Universal contact adhesive with exceptional adhesion strength. Perfect for gluing various surfaces or laminated materials where instant grip is required with load capacity and resistance to tensile strength.

CODE NO.

E91902



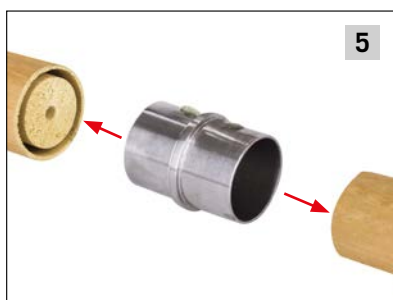
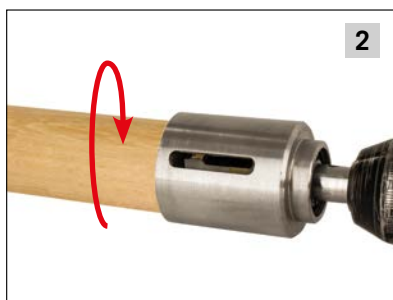
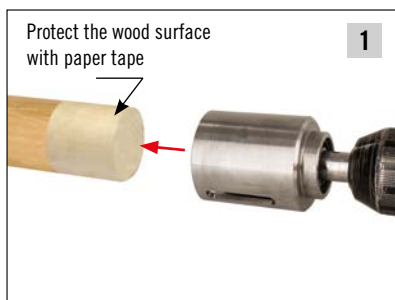
Hammer drill/driver 18V with two 1.5 Ah batteries. Weight 1.9 kg

CODE NO.

E91060



INSTRUCTIONS FOR USE



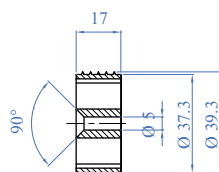
18 WOOD - X PRO

WOODINOX SYSTEM



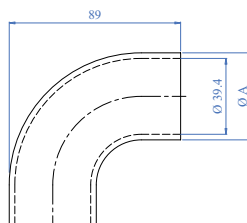
WOOD	Ø A	FINISH	LENGTH
E693/3000/G	Ø 42.4mm	Raw finish, unpainted	3000mm
E690/3000/G	Ø 45mm	Raw finish, unpainted	3000mm

PLASTIC SUPPORT FOR END CURVES



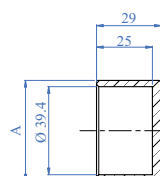
PLASTIC	DESCRIPTION	FOR HANDRAIL
E600/T42	Plastic support for end caps and fittings (screw included)	Ø 42.4mm
E600/T	Plastic supports for end caps and fittings (screw included)	Ø 45mm

CURVES AND FITTINGS



AISI304	DESCRIPTION	A
E607	90° curved	Ø 42.4mm
E600	90° curved	Ø 45mm

END CAPS



AISI304	DESCRIPTION	A
E4264	Flat end terminal	Ø 42.4mm
E4265	Flat end terminal	Ø 45mm



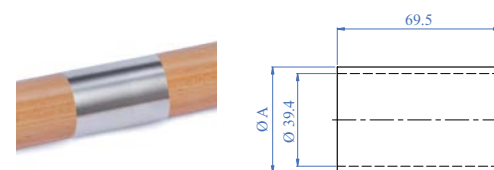
WOOD	Ø A	FINISH	LENGTH
E693/3000	Ø 42.4mm	Natural	3000mm
E691/3000	Ø 45mm	Natural	3000mm

TOOLS FOR MOUNTING WOODINOX

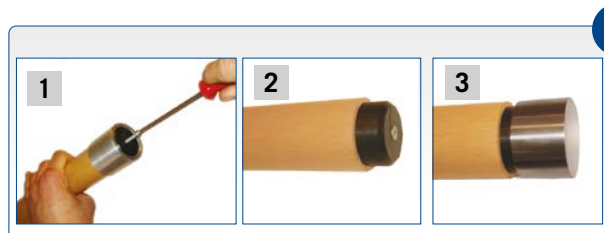


ALUMINIUM	DESCRIPTION	FOR HANDRAIL
E600/D42	Drill-gauge for wooden handrails	Ø 42.4mm
E600/D	Drill-gauge for wooden handrails	Ø 45mm

EASY TO INSTALL

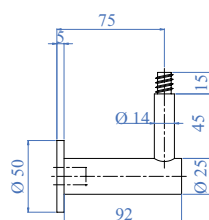


AISI304	DESCRIPTION	A
E608	Wooden handrail connector	Ø 42.4mm
E603	Wooden handrail connector	Ø 45mm

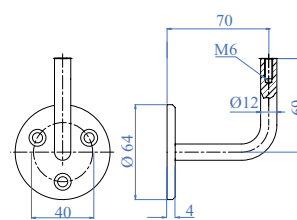


WOODINOX SYSTEM

HANDRAIL SUPPORTS



AISI316	DESCRIPTION
E4586	Handrail support



AISI304	DESCRIPTION
E0224	Handrail support

HANDRAIL SUPPORT ACCESSORIES

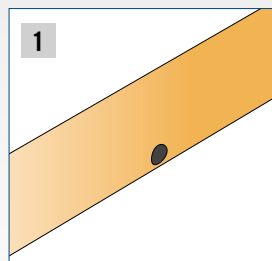


AISI304	DESCRIPTION
EINSM6X12	Nut for handrail support

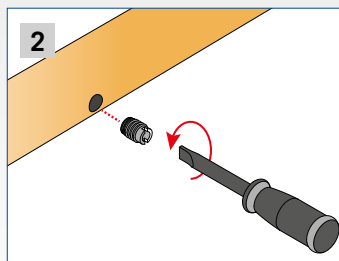


AISI304	DESCRIPTION
ESM614	Threaded screw M6

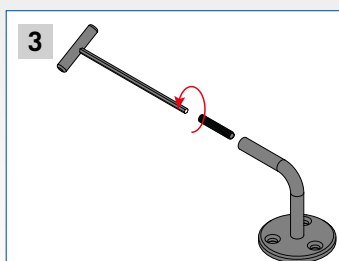
ASSEMBLY SCREWS AND HANDRAIL



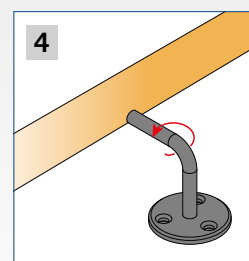
1 Drill the handrail Ø 12mm



2 Screw in EINSM6X12



3 Screw ESM614 to the handrail support



4 Twist the handrail support until the correct position is achieved

WOODINOX SYSTEM



RUBBER GASKET

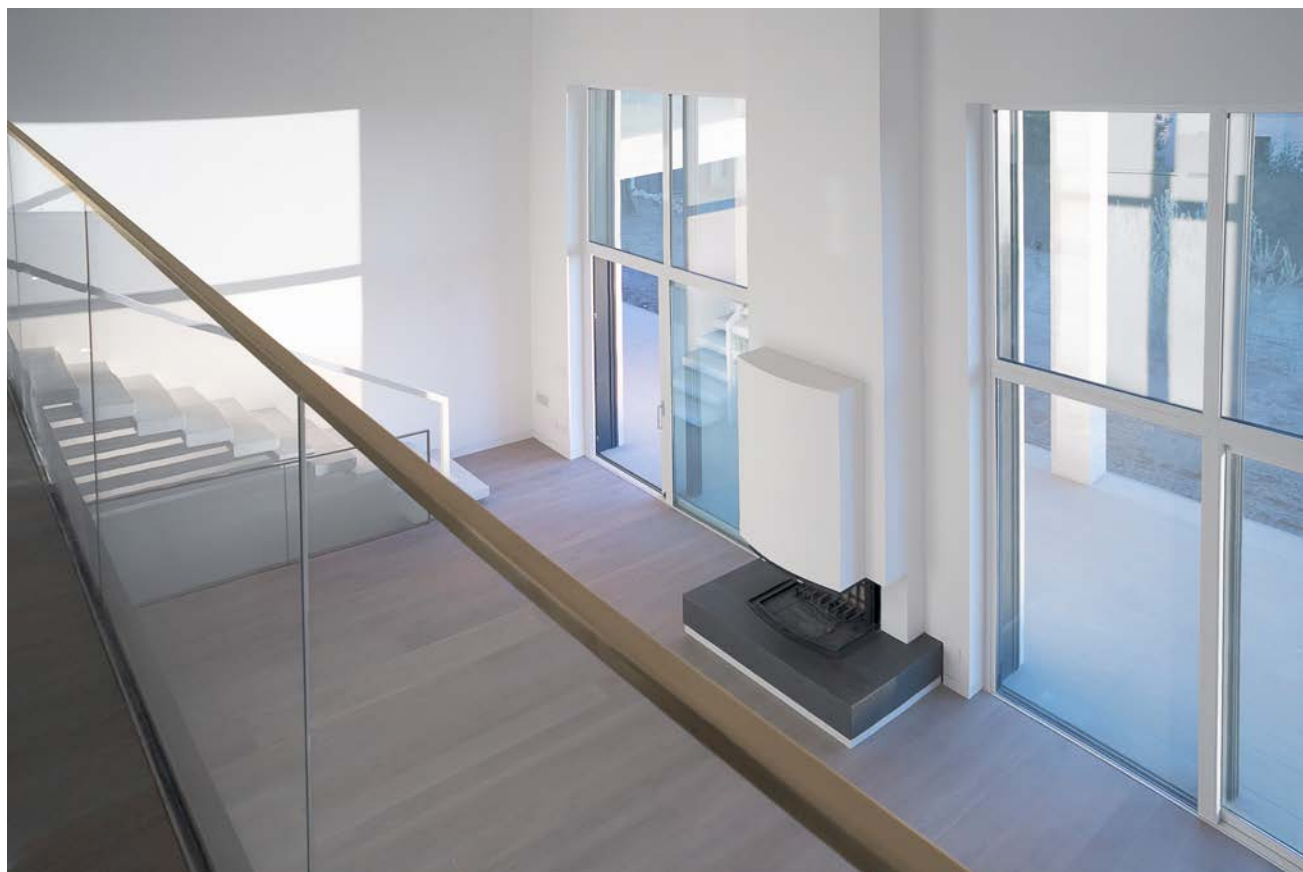


Also available in groups of 6 metres

WOOD	LENGTH	COLOUR
EW1100001	2m	Natural

RUBBER	FOR TUBE	GLASS	COIL LENGTH
E1999100	Ø 42.4mm	8 - 10.76mm	30m
E1999200	Ø 42.4mm	12 - 16.76mm	30m
E1999300	Ø 42.4mm	16.76 - 18mm	30m
E1999360	Ø 42.4mm	19mm	30m
E1999370	Ø 42.4mm	20 - 21.52mm	30m
E1999400	Ø 48.3mm	8 - 12.76mm	30m
E1999500	Ø 48.3mm	13 - 17.52mm	30m
E1999650	Ø 48.3mm	18 - 21.52mm	30m

18 WOODINOX SYSTEM



WOODINOX SYSTEM - SLOTTED TUBE FITTINGS

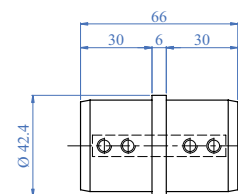
RUBBER ADAPTOR FOR WOOD PROFILE SYSTEM



Kit consisting of 3 parts:
1 section of tube E1100424
1 adaptor EW120010
1 self threading screw

AISI316	SLOTTED TUBE
EW120010	Ø 42.4mm

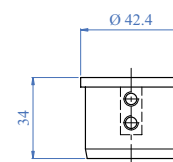
CONNECTOR



In stainless steel, satin finish, with grain size 240

AISI316	FOR TUBE
E1200100	Ø 42.4 x 1.5mm

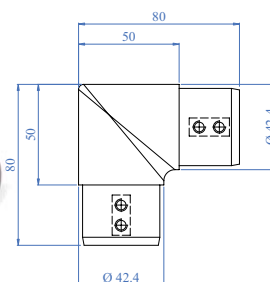
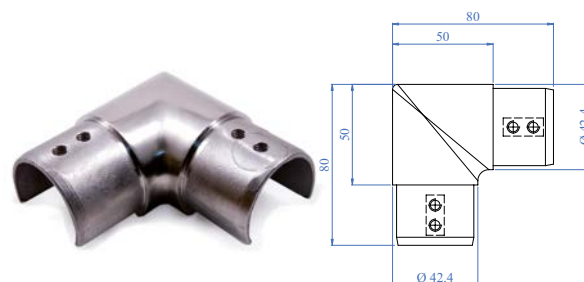
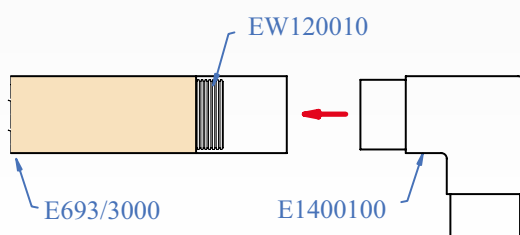
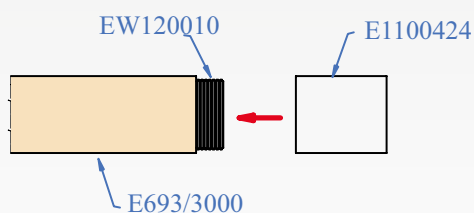
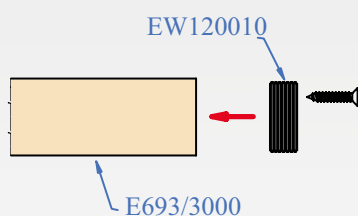
END CAP



In stainless steel, satin finish, with grain size 240

AISI316	FOR TUBE
E1100100	Ø 42.4 x 1.5mm

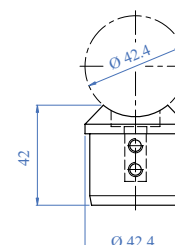
TO ASSEMBLE THESE CONNECTORS TO THE PROFILE SYSTEM, FOLLOW THESE DIAGRAMS



Horizontal fitting, satin finish, with grain size 240

AISI316	FOR TUBE
E1400100	Ø 42.4 x 1.5mm

HANDRAIL



In stainless steel, satin finish, with grain size 240

AISI316	FOR TUBE
E1300100	Ø 42.4 x 1.5mm