

# 21 ACCESSORIES

ACCESSORIES	204
FASTENERS	205
CLEANING PRODUCTS	206

## 21 ACCESSORIES



RUBBER Mallet TO BE USED



PRODUCT TO BE GLUED WITH E4054



ASSEMBLY WITH ALLEN KEY



PRODUCT TO BE WELDED



ANTI-CLIMB PRODUCT



SUPER STRONG, HIGH RESISTANT PRODUCT





# ACCESSORIES

Drilling template, patented for tubes  $\varnothing$  33.7 - 42.4 - 48.3mm, this equipment allows you to drill holes  $\varnothing$  7 - 9 - 11mm for threaded inserts and holes for M5 - M6 - M8 threadings.



CODE NO.  
E40580

Plastic box containing tool with M5, M6, M8 mandrels and heads. Riveting tool for threaded inserts M5, M6, M8.



CODE NO.  
E40590



Mandrels for riveting tool



CODE NO.	THREAD
E40590/M5	M5
E40590/M8	M8

Spray on zinc to retouch welding spots. Use with Systema Iron



CODE NO.  
185/9

Threaded inserts for riveting tool



AISI304	THREAD
E40591	M5
E40592	M6
E40593	M8

Adjustable wrench to tighten rods and suspended steps



Art. no.	FOR DIAMETER
E40790	15 - 35mm
E40791	36 - 50mm
E40792	51 - 80mm

10 scotch brite cloths



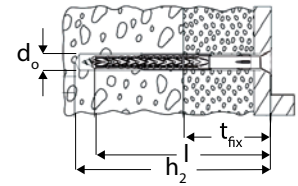
CODE NO.  
E40586

# ACCESSORIES - FASTENERS

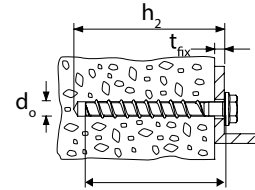
CODE NO.	Material	Min purchase pc.	Ø/Dia. Tip mm $d_0$	Min. Hole Depth mm $h_2$	Dowel Length mm $l$	Max. Fixing Thickness Dowel Length mm $t_{fix}$	Screw Imprint
----------	----------	------------------	---------------------	--------------------------	---------------------	-------------------------------------------------	---------------



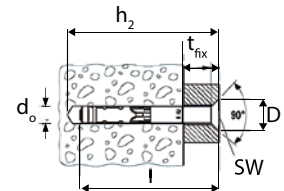
I038810100	Galvanised steel	50	10	110	100	30/10	T40 ☉
I038810120	Galvanised steel	50	10	130	120	50/30/10	T40 ☉
I038810140	Galvanised steel	50	10	150	140	70/50/30	T40 ☉
E038810100	AISI 316 [A4]	50	10	110	100	30/10	T40 ☉
E038810120	AISI 316 [A4]	50	10	130	120	50/30/10	T40 ☉
E038810140	AISI 316 [A4]	50	10	150	140	70/50/30	T40 ☉



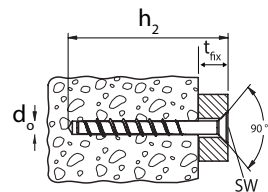
I0370	Galvanised steel	50	8	100	90	40	SW13/TX40
I0371	Galvanised steel	50	10	130	120	65	SW15
I0370316	AISI 316 [A4]	25	8	100	90	40	SW13/TX40
I0371316	AISI 316 [A4]	25	10	130	120	65	SW15



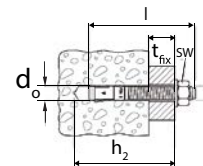
I0343	Galvanised steel	25	12	130	125	50	5 SW ☉
E0343316	AISI 316 [A4]	25	12	130	125	50	6 SW ☉



I0341	Galvanised steel	50	8	100	90	40	TX40 ☉
I0342	Galvanised steel	50	10	130	120	65	TX50 ☉
I0341316	AISI 316 [A4]	50	8	100	90	40	TX40 ☉
I0342316	AISI 316 [A4]	50	10	130	120	65	TX50 ☉



I0346	Galvanised steel	50	8	106	111	50/60	13-SW
I0345	Galvanised steel	20	10	118	126	50/60	17-SW
I0347	Galvanised steel	20	12	115	126	30/45	19-SW
I0346316	AISI 316 [A4]	50	8	106	111	50/60	13-SW
I0345316	AISI 316 [A4]	20	10	118	126	50/60	17-SW
I0347316	AISI 316 [A4]	20	12	115	126	30/45	19-SW



FIP C 700 HP / T-BOND injection chemical system

Hybrid polyester resin for structural applications on brickwork (full and pierced bricks)



## ANCHORING MATERIALS

### Anchorings for:

- Full brick in brick and calcium silicate
- Semi - full brick (vertically pierced)
- Hollow block in normal concrete
- Hollow block in lightened concrete

### Suitable for non structural applications:

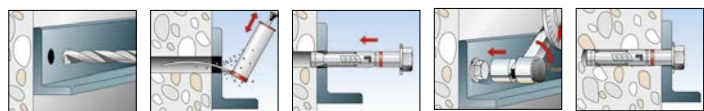
- Concrete not cracked
- Compact natural stone

## OPERATION

FIP C700 HP / T-BOND are injection chemical anchorings - two-component, polyester-based hybrids.

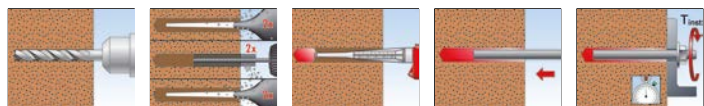
- Resin and hardener are located in separate containers and are not blended or activated as long as extrusion takes place through the mixer.
- Before installing, clean the hole according to recommendations below.
- Extrude FIP C700 HP / T-BOND chemical anchorings without air bubbles, starting from hole bottom.
- Chemical anchoring firmly connects the entire accessory surface side with the hole surface side by sealing it.
- Different-sized cartridges are easily and quickly accessible with fisher dispensers.
- Partially used cartridges can be used by replacing the mixer.

## Expansion metallic anchorings



## FIP C 700 HP / T-BOND injection chemical system

### FIS A installation in full bricks



# ACCESSORIES - CLEANING PRODUCTS

## CLEANING PRODUCTS FOR STAINLESS STEEL

Degreaser spray for cleaning all metal surfaces.



CODE NO.

E4051

Leaves a thin antistatic and water-repellent coat on treated metallic surfaces. Recommended for use on finished products



CODE NO.

E4052

Threadlocking

High-strength adhesive



CODE NO.

E4053



CODE NO.

E4054

De-rusting solution for stainless steel. It is a powerful degreasing product to clean up traces of iron from stainless steel surfaces. It cleans, protects and enhances the original brightness



1 Kg

CODE NO.

E4051/D

Product enough for approx 2m<sup>2</sup>

Passivating product for stainless steel. Its purpose is to create a protective oxide and chrome film on the stainless steel surface



1 Kg

CODE NO.

E4051/P

Product enough for approx 2m<sup>2</sup>

Stainless steel cleaning kit

Including:  
250 g ultra active cleaner  
250 g surface cleaner  
2 special sponges  
1 polishing cloth  
1 pair of protective glasses  
and instruction sheet



CODE NO.

E91901

### HOW TO TREAT OXIDISED STAINLESS STEEL

Stainless steel is a lasting and reliable material. Nevertheless, it is necessary to treat it correctly in order to avoid its oxidation under specific conditions. In fact, stainless steel can oxidise in cases of: storage near iron elements; inadequate treatment during the assembly phase; use of the same tools used to work iron elements; urban pollution and dust; and proximity of companies working in the metallurgical field.

In order to meet the needs of its customers, Ind.i.a. spa created a range of specific items: a De-rusting (E4051/D) product for cleaning "polluted" stainless steel components and Passivating (E4051/P) product to restore their protective film.

The combined use of these products makes the 'renovation' of surfaces - even those which seem compromised - possible.



Example of a stainless steel picket polluted by external agents like dust and smog



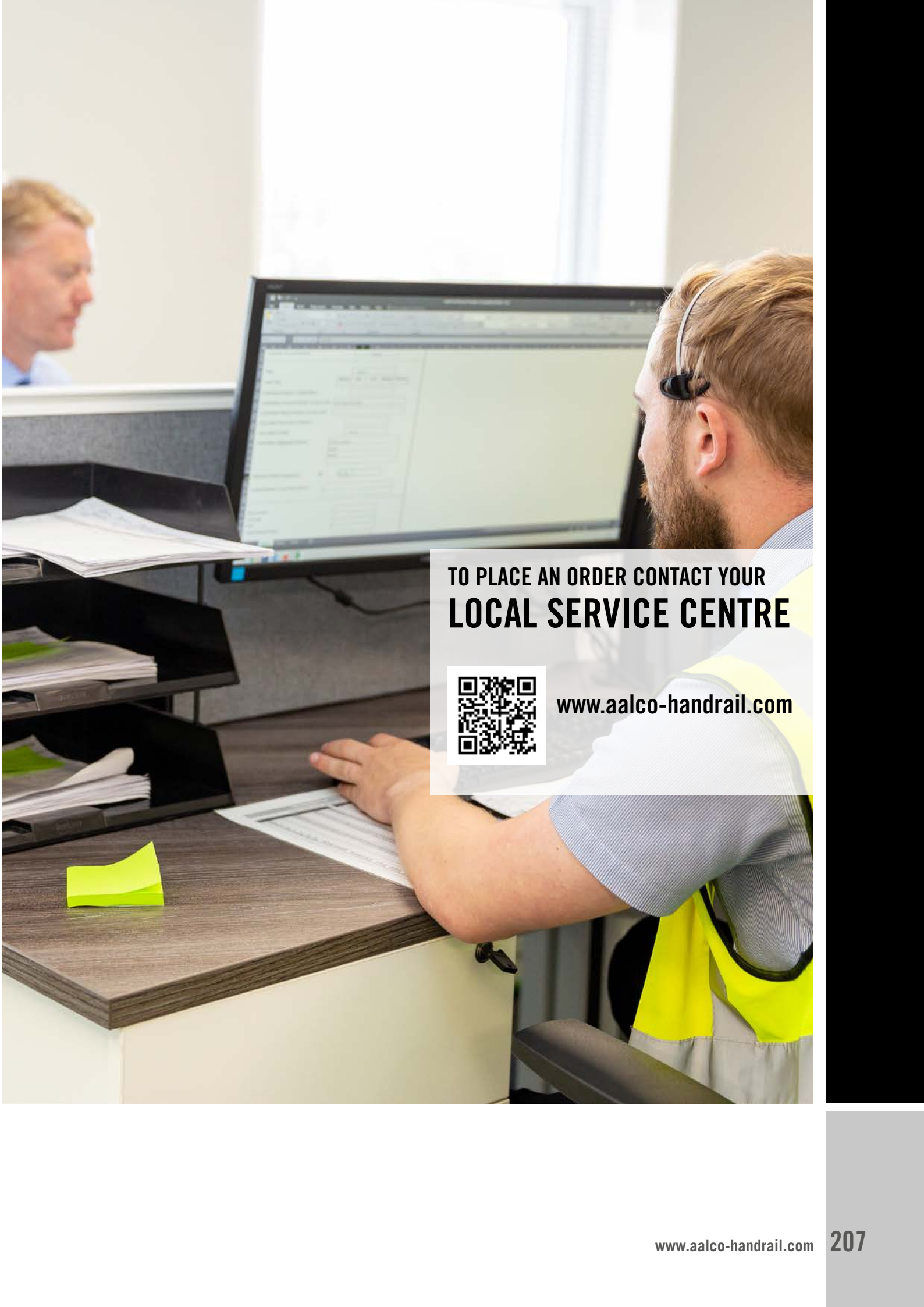
Application of the De-rusting product E4051/D: all polluted parts must be covered



Application of the Passivating product E4051/P: polluted component must be entirely covered



Result of the application of De-rusting and Passivating products



**TO PLACE AN ORDER CONTACT YOUR  
LOCAL SERVICE CENTRE**



[www.aalco-handrail.com](http://www.aalco-handrail.com)