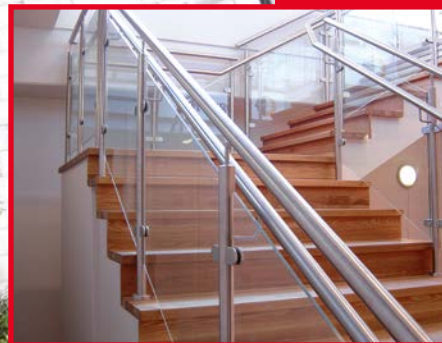
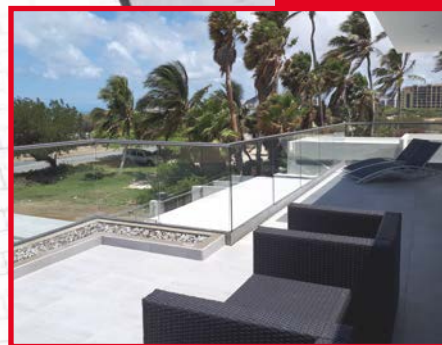


aalco®

ARCHITECTURAL
HANDRAIL
SYSTEMS



CONTENTS

GLASS U A (AVANT-GARDE)	2
NEW GLASS U P2 (PRECISION 2)	3-4
PROFILE SYSTEM - ROUND	5
STAINLESS STEEL TUBES	6
GLASS CLAMPS	7-10
NEWEL POSTS	11
ANCHORAGE FITTINGS	11
CURVES & FITTINGS	12-13
END CAPS	13
HANDRAIL SUPPORTS	13-14

NEW PRODUCTS

CHAMELEON POST SYSTEM	16-17
CLEAR VISTA FRENCH BALCONY	18-19
SMARTGLASS CANOPY	20-21



RUBBER MALLET TO BE USED



PRODUCT TO BE GLUED WITH E4054



ASSEMBLY WITH ALLEN KEY



PRODUCT TO BE WELDED



ANTI-CLIMB PRODUCT



SUPER STRONG, HIGH RESISTANT PRODUCT



For a complete product brochure, which includes the special order items NOT commonly held in the UK, please contact your local service centre or visit our website www.aalco-handrail.com



Aalco and IAM Design own intellectual property rights of the products described in this catalogue. These rights include, but are not limited to, patents, patent applications, registered designs, unregistered design rights, trademarks, unregistered trademarks and copyright. Unless authorised by Aalco and IAM Design, the contents of this catalogue may not be copied in any way. The company operates a policy of progressive improvements and reserves the right to alter the specification of any product without notice.

www.aalco-handrail.com

Aalco is the largest independent stockholder of multi-metals in the UK.

Working with our Italian partner IAM design, Aalco Architectural Handrail Systems draws on Aalco's wide ranging experience in metal supply with a company dedicated to contemporary handrail systems. More than 2,500 modular stainless steel components are available to construct railings, balustrades, canopies, staircases and other structural elements, whether it is for an internal or an external application. As well as this, Aalco Architectural Handrail Systems can also offer fabrication of bespoke designs to fit your specification needs.

The focus is on quick and easy installation through various elements which are characterised by their modern and linear design. This ensures there is a system to meet the requirements of any environment and the needs of architects, designers and indeed of anybody looking for a quality solution.

Systems are available for both commercial and domestic applications and backed by a full support service, which includes design assistance and product selection advice.

This Abridged brochure features the most commonly specified handrail fittings, which are all held in stock in the UK and Ireland, ready for Next Day delivery.

The last few pages feature a number of exciting new products: Chameleon Post, Clear Vista Balcony and Smart Glass Canopy. These are not stock items and are only available from our manufacturing partner in Italy, with corresponding lead times (highlighted with an Italian flag in corner of pages).

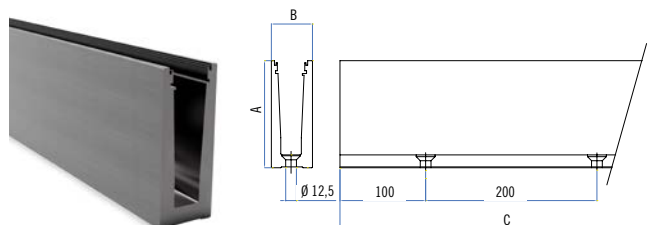
Aalco Architectural Handrail Systems provides a one-stop-shop for all your railing requirements.



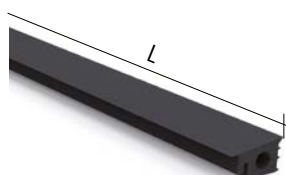


Glass U A is ideal for private homes, bars, restaurants and most public places, thanks to increased load resistance. In addition to the classic fixing system, it is equipped with a patented glass spacer system that increases its strength.

GLASS U A (AVANT-GARDE) TOP 1

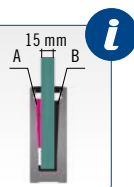


ALUMINIUM	A	B	C
E1800130	125mm	48mm	3000mm

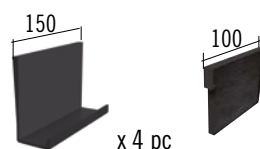


For 15mm - thick glass, use the rubbers as shown in the graphic.

Side A E1804620
Side B E1803620

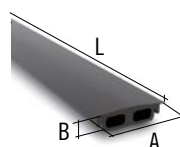


RUBBER	GLASS THICKNESS	L
E1804620	12.76-13.52mm and 15mm	30m
E1803620	16.76-17.52 and 19mm	30m
E1806620	20.76 and 21.52mm	30m

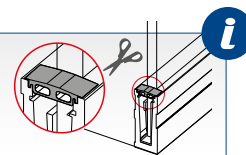


Fixing kit for 1m balustrade

PLASTIC	GLASS THICKNESS
E1808600	15mm
E1805600	17.52mm
E1806600	20.76 - 21.52mm

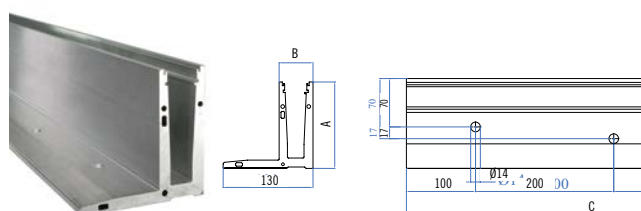


SPACERS CAN BE CUT TO SIZE TO MEET THE NEEDS OF YOUR PROJECT!



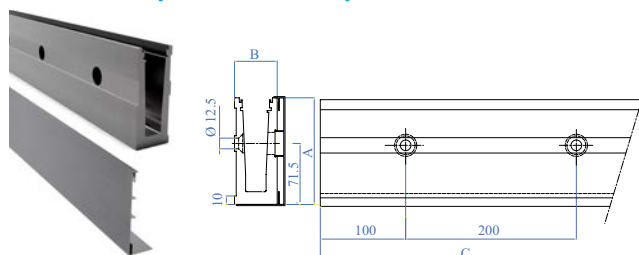
RUBBER	A	B	L
E1999004	45mm	10.5mm	500mm

GLASS U A (AVANT-GARDE) TOP 2

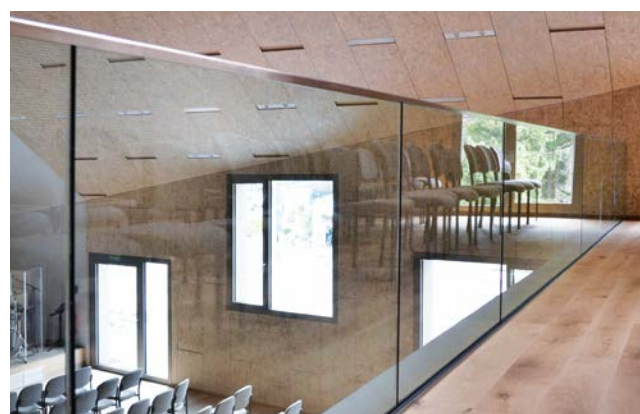
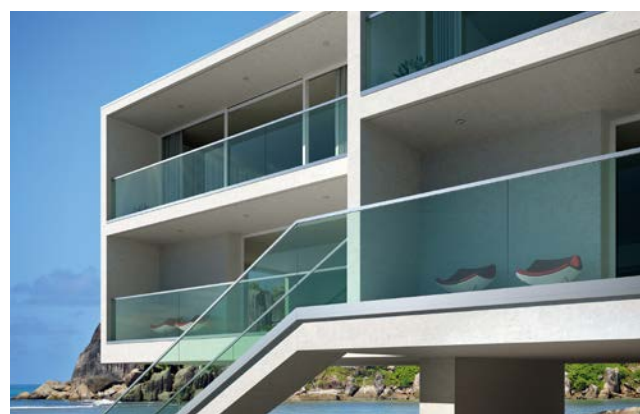


ALUMINIUM	A	B	C
E1800170	125mm	49mm	3000mm

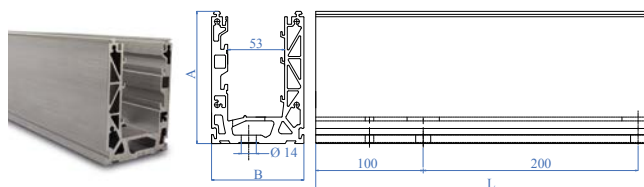
GLASS U A (AVANT-GARDE) SIDE 1



ALUMINIUM	A	B	C
E1800140	125mm	50mm	3000mm



GLASS U P2 (PRECISION 2) TOP



Pre-drilled profile for floor anchorage with channels for water drainage

ALUMINIUM	A	B	L
E1700803	123mm	86mm	3000mm



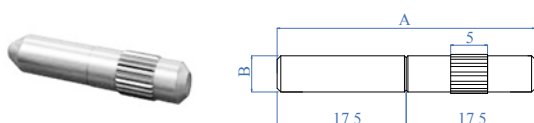
External side cover plate for floor anchorage

ALUMINIUM	A	B	L
E1700833	24mm	140mm	3000mm



Glass fixing kit - use 1 kit (4 blocks) for each metre of profile. For higher loadings (1.5kN) - use kit containing 6 blocks per metre.

IRON-ZINC PLASTIC	GLASS THICKNESS	Kit
E1700810/15	15-16.76-17.52mm (0.74kN loading)	for 1m
E1700810/19	19-20.76-21.52mm (0.74kN loading)	for 1m
E1700810/19/6	19-20.76-21.52mm (1.5kN loading)	for 1m

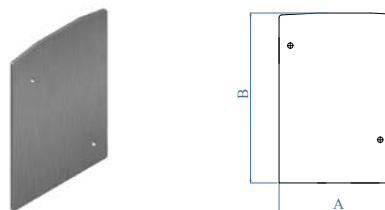


Connection plug for profiles

ALUMINIUM	A	B	Kit
E1700840	35mm	Ø 5mm	10 pc.

This new generation of profiles has been designed to enable easier alignment of glass in balustrades. It allows adjustment of the glass from just the internal side of the balustrade through the patented ACE-BLOCK system. The Glass U P2 system has successfully passed the most stringent tests and offers aesthetic lines that have made the system such a popular option.

The system's interior represents the true innovation with the new ACE-BLOCK regulation system. The mechanical and functional characteristics allow easier installation while increasing performance resistance.



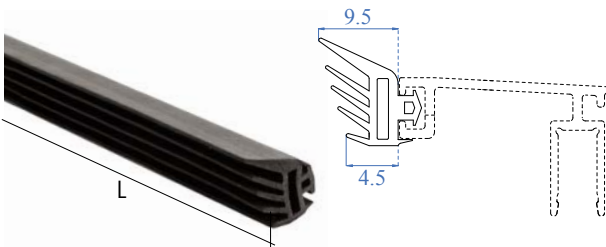
End cap for floor anchorage - 2 pieces

ALUMINIUM	A	B
E1700805	94mm	140mm



Internal side cover plate for floor anchorage

ALUMINIUM	A	B	L
E1700823	37.5mm	140mm	3000mm



Gaskets kit for outdoor and indoor use

RUBBER	GLASS THICKNESS	L
E1999025	from 15 to 17.52mm	3m
E1999026	from 19 to 21.52mm	3m



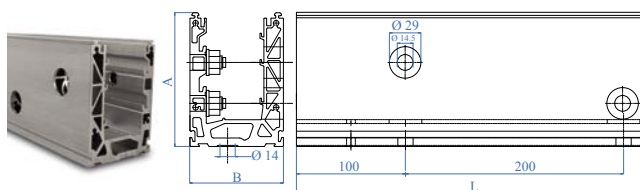
NEW

GLASS U P2 (PRECISION 2)



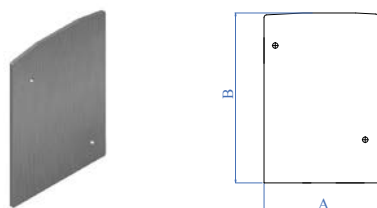
NEW

GLASS U P2 (PRECISION 2) SIDE



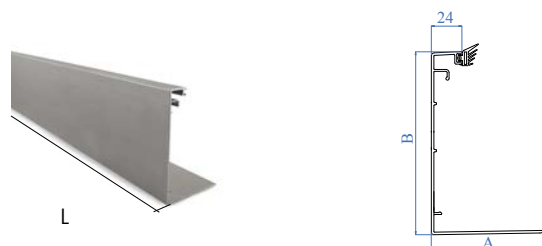
Pre-drilled profile for wall anchorage with channels for water drainage

ALUMINIUM	A	B	L
E1700853	123mm	86mm	3000mm



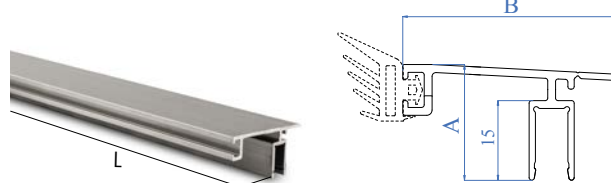
End cap for wall anchorage - 2 pieces

ALUMINIUM	A	B
E1700855	94mm	140mm



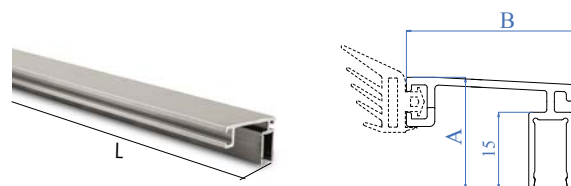
External side cover plate for wall anchorage

ALUMINIUM	A	B	L
E1700863	89mm	144mm	3000mm



Internal side cover plate for wall anchorage

ALUMINIUM	A	B	L
E1700873	22mm	41.4mm	3000mm



External superior side cover plate for wall anchorage

ALUMINIUM	A	B	L
E1700874	22mm	29.6mm	3000mm

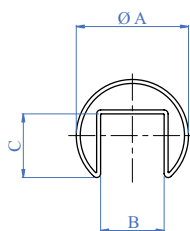


ALUMINIUM	A	B	Kit
E1700845	50mm	80mm	for 3m

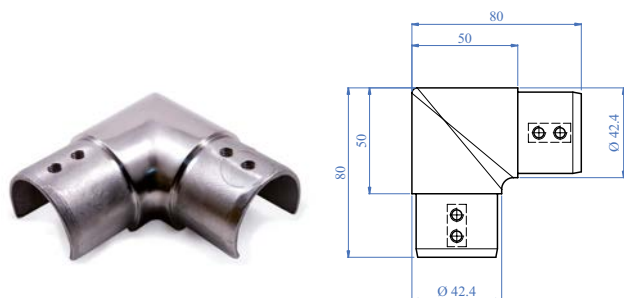


GLASS U P2 (PRECISION 2)

PROFILE SYSTEM - ROUND

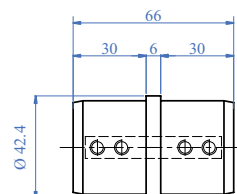
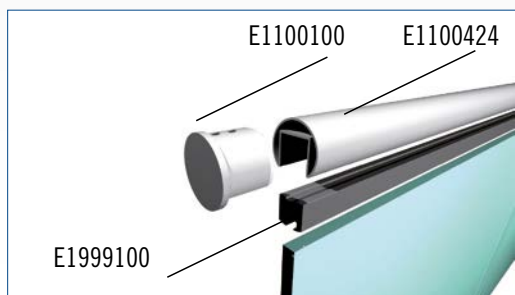
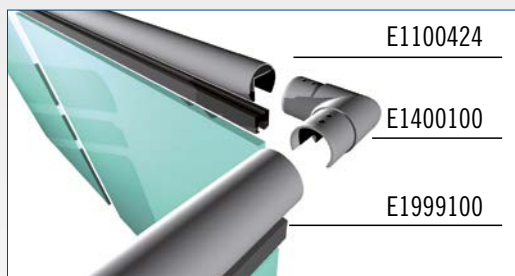


AISI304	AISI316	TUBE A	LENGTH	B	C
Satin Finish					
E1000424	E1100424	Ø 42.4 x 1.5mm	6000mm	24mm	24mm
E1000483	E1100483	Ø 48.3 x 1.5mm	6000mm	26mm	30mm

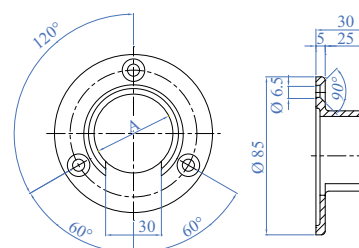


AISI316	TUBE A
E1400100	Ø 42.4 x 1.5mm
E1400110	Ø 48.3 x 1.5mm

EASY TO INSTALL

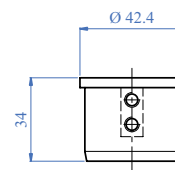


AISI316	TUBE A
E1200100	Ø 42.4 x 1.5mm
E1200110	Ø 48.3 x 1.5mm



WALL ANCHORAGE

AISI316	TUBE A
E1110100	Ø 42.4 x 1.5mm
E1110110	Ø 48.3 x 1.5mm



AISI316	TUBE A
E1100100	Ø 42.4 x 1.5mm
E1100110	Ø 48.3 x 1.5mm



RUBBER	FOR TUBE	GLASS	COIL LENGTH
E1999100	Ø 42.4mm	8 - 10.76mm	3000mm
E1999200	Ø 42.4mm	12 - 16.76mm	3000mm
E1999300	Ø 42.4mm	16.76 - 18mm	3000mm
E1999400	Ø 48.3mm	8 - 12.76mm	3000mm
E1999500	Ø 48.3mm	13 - 17.52mm	3000mm
E1999650	Ø 48.3mm	18 - 21.52mm	3000mm



STAINLESS STEEL TUBES



Stainless steel, satin finish, with grain size 320, individually packed

		DIMENSIONS	LENGTH
AISI304	AISI316	Ø 42.4 x 2.0mm	6000mm
AISI304	AISI316	Ø 42.4 x 2.6mm	6000mm
AISI304	AISI316	Ø 48.3 x 2.0mm	6000mm
AISI304	AISI316	Ø 48.3 x 2.6mm	6000mm



D-SHAPED TUBE

With a smooth top, flat section and incredible lateral strength, this clever design prevents water ingress underneath, plus it is very easy to install. Ideal for handrail in public buildings.

- **Ease of installation**
- **A flat and secure base to apply to brickwork and balustrades**
- **Flat face on its underside makes it easy to weld to (we also offer flat-sided oval tubing - please ask for details)**
- **Square-cut balusters can be welded directly to its recess, or a glazing channel can be welded or attached by threading inserts to the underside**
- **Ideal for railings, balustrades, guardrails, kick rails and balconies**

Contact your local service centre for more information



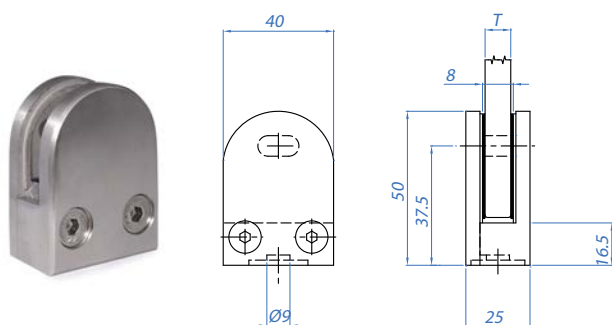
GLASS CLAMPS - HOW TO READ THE GLASS CLAMP CODES

E 1 10 042 00 EXAMPLE

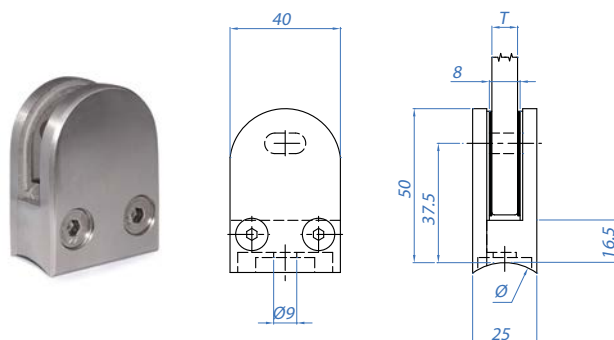
Finishes	Material	Model	Anchor surface	Rubber
E Satin Finish	1 AISI 304	10 40 x 50 x 24mm Round	000 Flat Surface	00 Without rubber
X Mirror Polished	2 AISI 316	11 45 x 45 x 28mm Square	033 Ø 33.7mm	
J Unpolished	3 Zamac/Aluminium	12 45 x 63 x 28mm Round	042 Ø 42.4mm	
		13 70 x 55 x 40mm Square - With side stopper	048 Ø 48.3mm	
		14 45 x 63 x 30mm Round	050 Ø 50.8mm	
		15 55 x 55 x 35mm Square - With side stopper		
		16 40 x 50 x 28mm Round		

GLASS CLAMPS - MODEL 10

GLASS CLAMPS, FLAT BASE



GLASS CLAMPS, RADIAL BASE



AISI304	FINISH	FOR TUBE Ø	Box
E 1 10 000 00	Satin	Flat surface	4 pcs.

AISI316	FINISH	FOR TUBE Ø	Box
E 2 10 000 00	Satin	Flat surface	4 pcs.

AISI316	FINISH	FOR TUBE Ø	Box
E 2 10 042 00	Satin	42.4mm	4 pcs.

AISI316	FINISH	FOR TUBE Ø	Box
E 2 10 042 00	Satin	42.4mm	4 pcs.

Glass clamps are supplied without rubbers in boxes of 4

RUBBER



Monolithic glass

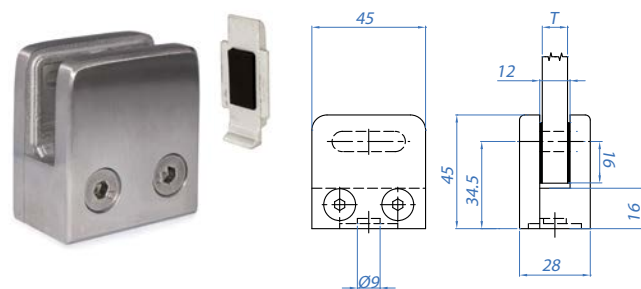
RUBBER	MOD.	GLASS THICKNESS T	NO. SET	NO. PER SET
R 10 06	10	6mm	4	2 pcs.
R 10 08	10	8mm	4	2 pcs.

GLASS CLAMPS



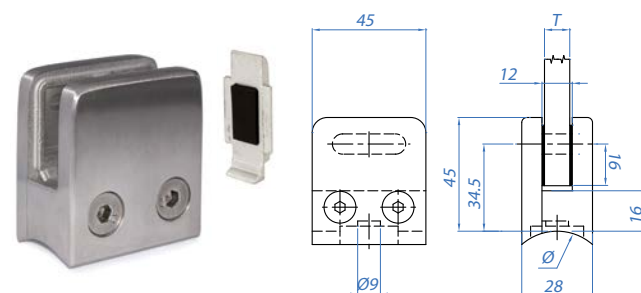
GLASS CLAMPS - MODEL 11A

GLASS CLAMPS, FLAT BASE



AISI304	FINISH	FOR TUBE Ø	Box
E 1 11A 000 00	Satin	Flat surface	4 pcs.
AISI316	FINISH	FOR TUBE Ø	Box
E 2 11A 000 00	Satin	Flat surface	4 pcs.

GLASS CLAMPS, RADIAL BASE



AISI304	FINISH	FOR TUBE Ø	Box
E 1 11A 048 00	Satin	48.3mm	4 pcs.
AISI316	FINISH	FOR TUBE Ø	Box
E 2 11A 042 00	Satin	42.4mm	4 pcs.

Glass clamps are supplied without rubbers in boxes of 4

RUBBER

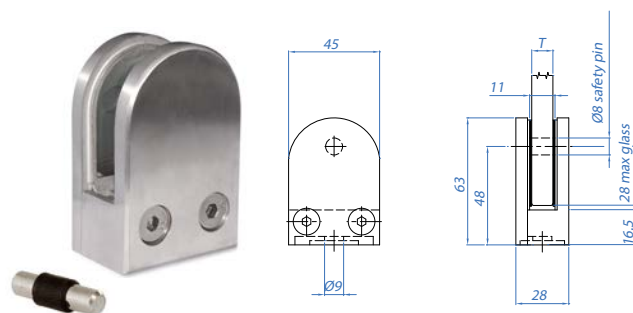


Monolithic glass

RUBBER	MOD.	GLASS THICKNESS T	NO. SET	NO. PER SET
R 11A 06	11A	6mm	4	2 pcs.
R 11A 08	11A	8mm	4	2 pcs.
R 11A 10	11A	10mm	4	2 pcs.
R 11A 12	11A	12mm	4	2 pcs.

GLASS CLAMPS - MODEL 12

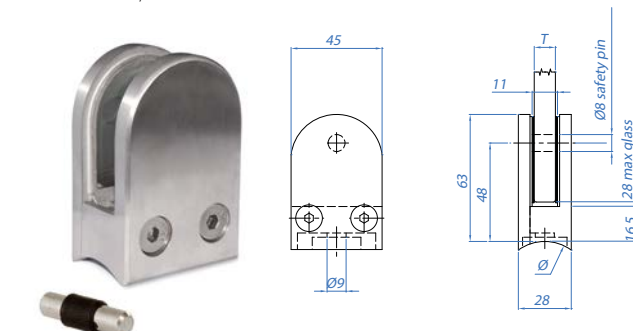
GLASS CLAMPS, FLAT BASE



With locking pin

AISI304	FINISH	FOR TUBE Ø	Box
E 1 12 000 00	Satin	Flat surface	4 pcs.
AISI316	FINISH	FOR TUBE Ø	Box
E 2 12 000 00	Satin	Flat surface	4 pcs.

GLASS CLAMPS, RADIAL BASE



With locking pin

AISI304	FINISH	FOR TUBE Ø	Box
E 1 12 042 00	Satin	42.4mm	4 pcs.
E 1 12 048 00	Satin	48.3mm	4 pcs.
AISI316	FINISH	FOR TUBE Ø	Box
E 2 12 042 00	Satin	42.4mm	4 pcs.
E 2 12 048 00	Satin	48.3mm	4 pcs.

Glass clamps are supplied without rubbers in boxes of 4

RUBBER

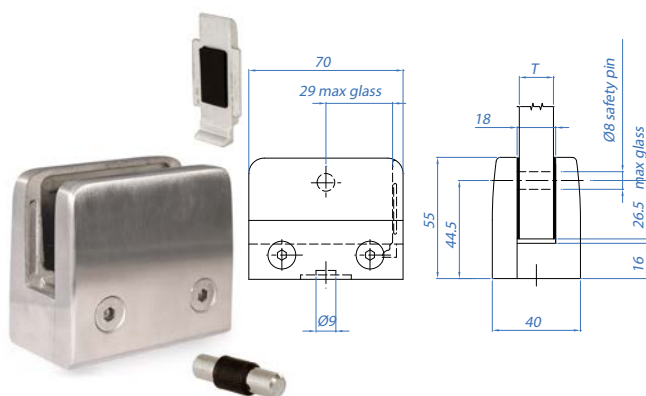


Monolithic glass

RUBBER	MOD.	GLASS THICKNESS T	NO. SET	NO. PER SET
R 12 06	12	6mm	4	2 pcs.
R 12 08	12	8mm	4	2 pcs.
R 12 10	12	10mm	4	2 pcs.

GLASS CLAMPS - MODEL 13

GLASS CLAMPS, FLAT BASE



With locking pin

AISI304	FINISH	FOR TUBE Ø	Box
E 1 13 000 00	Satin	Flat surface	4 pcs.
AISI316	FINISH	FOR TUBE Ø	Box
E 2 13 000 00	Satin	Flat surface	4 pcs.

Glass clamps are supplied without rubbers in boxes of 4

RUBBER



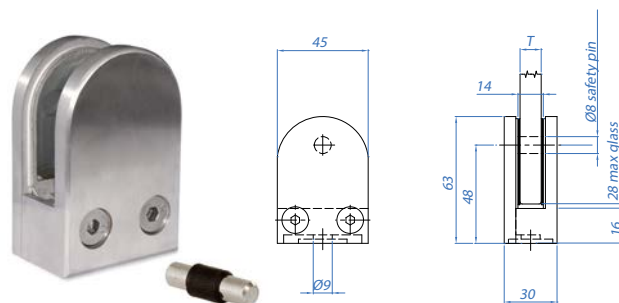
Monolithic glass

RUBBER	MOD.	GLASS THICKNESS T	NO. SET	NO. PER SET
R 13 12	13	12mm	4	2 pcs.
R 13 15	13	15mm	4	2 pcs.



GLASS CLAMPS - MODEL 14

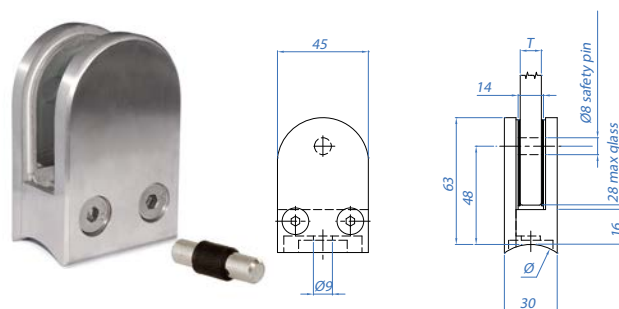
GLASS CLAMPS, FLAT BASE



With locking pin

AISI304	FINISH	FOR TUBE Ø	Box
E 1 14 000 00	Satin	Flat surface	4 pcs.
AISI316	FINISH	FOR TUBE Ø	Box
E 2 14 000 00	Satin	Flat surface	4 pcs.

GLASS CLAMPS, RADIAL BASE



With locking pin

AISI304	FINISH	FOR TUBE Ø	Box
E 1 14 042 00	Satin	42.4mm	4 pcs.
E 1 14 048 00	Satin	48.3mm	4 pcs.
AISI316	FINISH	FOR TUBE Ø	Box
E 2 14 042 00	Satin	42.4mm	4 pcs.
E 2 14 048 00	Satin	48.3mm	4 pcs.

Glass clamps are supplied without rubbers in boxes of 4

RUBBER



Monolithic glass

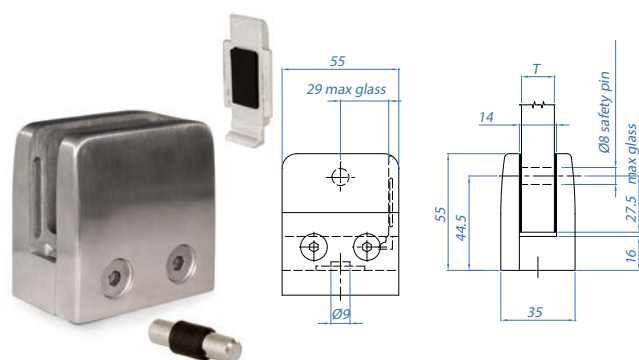
RUBBER	MOD.	GLASS THICKNESS T	NO. SET	NO PER SET
R 14 12	14	12mm	4	2 pcs.

GLASS CLAMPS



GLASS CLAMPS - MODEL 15

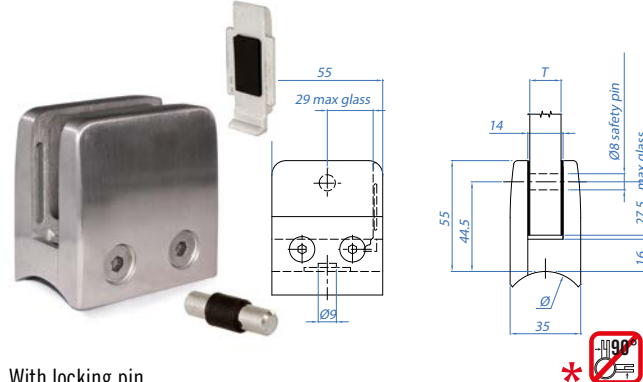
GLASS CLAMPS, FLAT BASE



With locking pin

AISI304	FINISH	FOR TUBE Ø	Box
E 1 15 000 00	Satin	Flat surface	4 pcs.
AISI316	FINISH	FOR TUBE Ø	Box
E 2 15 000 00	Satin	Flat surface	4 pcs.

GLASS CLAMPS, RADIAL BASE



With locking pin

AISI304	FINISH	FOR TUBE Ø	Box
E 1 15 *042 00	Satin	42.4mm	4 pcs.
AISI316	FINISH	FOR TUBE Ø	Box
E 2 15 *042 00	Satin	42.4mm	4 pcs.
E 2 15 048 00	Satin	48.3mm	4 pcs.

RUBBER

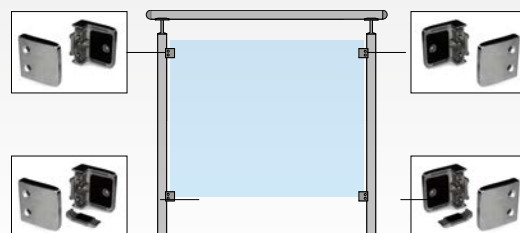


Monolithic glass

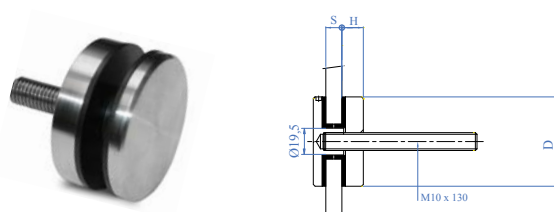
RUBBER	MOD.	GLASS THICKNESS T	NO. SET	NO. PER SET
R 15 08	15	8mm	4	2 pcs.
R 15 10	15	10mm	4	2 pcs.
R 15 12	15	12mm	4	2 pcs.

Glass clamps are supplied without rubbers in boxes of 4

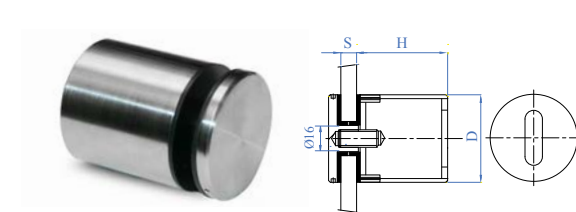
TO COMPLETELY REMOVE THE POSSIBILITY OF THE GLASS SLIDING, USE THE ACCESSORY SUPPLIED THAT CAN BE USED ON BOTH SIDES



GLASS WALL CLAMPS



AISI316	H	DIAMETER D	GLASS THICKNESS S
E40940	10mm	50mm	8 - 16.76mm



AISI316	H	DIAMETER D	GLASS THICKNESS S
E40910	40mm	50mm	8 - 17.52mm

NEWEL POSTS

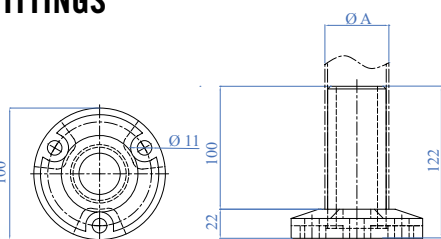
Posts with reinforced base for higher resistance and security.



AISI316	X	H
E033610014	42.4 x 2.0mm	1000mm
E033610015	42.4 x 2.6mm	1000mm
E033610016	48.3 x 2.0mm	1000mm
E033610017	48.3 x 2.6mm	1000mm

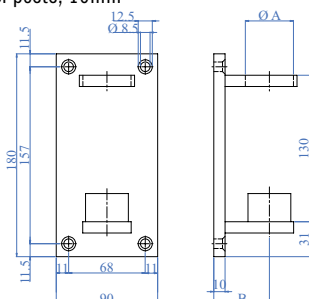


ANCHORAGE FITTINGS



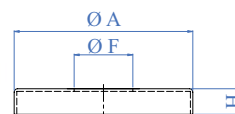
AISI316	FOR TUBE A
E40310	Ø 42.4 x 2.0mm
E40310/26	Ø 42.4 x 2.6mm
E40320	Ø 48.3 x 2.0mm
E40320/26	Ø 48.3 x 2.6mm

Lateral tube holder for newel posts, 10mm



AISI316	FOR TUBE A	B
E406	Ø 42.4 x 2.0mm	49mm
E407	Ø 48.3 x 2.0mm	57mm

FLANGE COVERS



Satin finish with grain size 240, thickness 1.5mm

AISI316	DIMENSION A	HOLE F	HEIGHT H
E4072/C	Ø 105mm	Ø 43.0mm	25mm
E4073	Ø 105mm	Ø 49.0mm	25mm

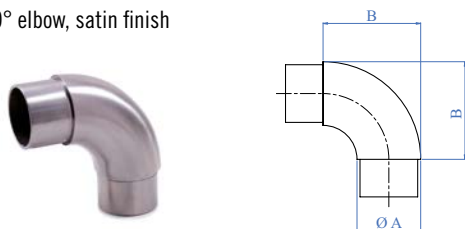


www.aalco-handrail.com



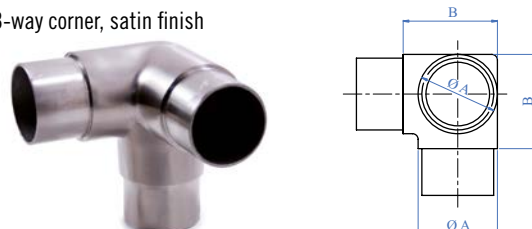
CURVES & FITTINGS - TUBE FITTINGS

90° elbow, satin finish



AISI316	FOR TUBE A	B
E450	Ø 42.4 x 2.0mm	65mm
E450/26	Ø 42.4 x 2.5mm	65mm
E2002	Ø 48.3 x 2.0mm	73mm
E2002/26	Ø 48.3 x 2.5mm	73mm

3-way corner, satin finish

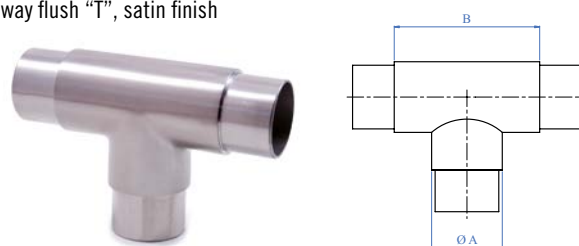


AISI316	FOR TUBE A	B
E203	Ø 42.4 x 2.0mm	65mm
E203/26	Ø 42.4 x 2.5mm	50mm
E2032	Ø 48.3 x 2.0mm	50mm



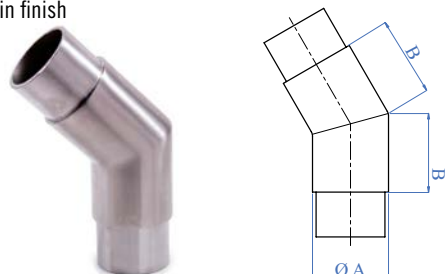
AISI316	FOR TUBE A	B
E451	Ø 42.4 x 2.0mm	65mm
E451/26	Ø 42.4 x 2.6mm	65mm
E2012	Ø 48.3 x 2.0mm	67mm
E2012/26	Ø 48.3 x 2.5mm	67mm

3-way flush "T", satin finish



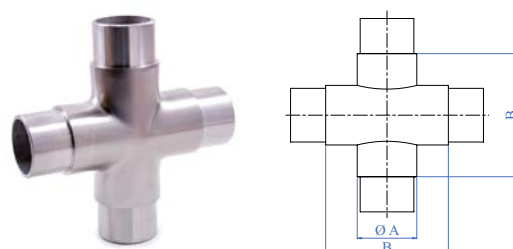
AISI316	FOR TUBE A	B
E453	Ø 42.4 x 2.0mm	100mm
E453/26	Ø 42.4 x 2.6mm	100mm
E2042	Ø 48.3 x 2.0mm	88mm
E2042/26	Ø 48.3 x 2.5mm	88mm

45° angle, satin finish



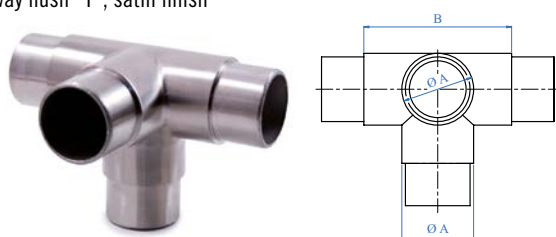
AISI316	FOR TUBE A	B
E2015	Ø 42.4 x 2.0mm	50mm
E2015/26	Ø 42.4 x 2.5mm	50mm
E2017	Ø 48.3 x 2.0mm	55mm
E2017/26	Ø 48.3 x 2.5mm	55mm

4-way cross, satin finish



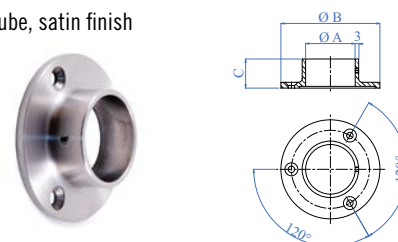
AISI316	FOR TUBE A	B
E2045	Ø 42.4 x 2.0mm	87mm
E2047	Ø 48.3 x 2.0mm	91mm
E2047/26	Ø 48.3 x 2.5mm	91mm

4-way flush "T", satin finish



AISI316	FOR TUBE A	B
E2035	Ø 42.4 x 2.0mm	89mm

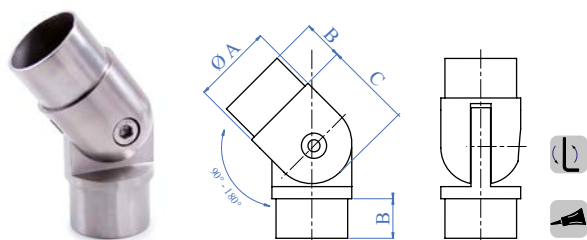
Anchor for tube, satin finish



AISI316	FOR TUBE A	B	C
E456	Ø 42.4mm	Ø 84mm	25mm
E2067	Ø 48.3mm	Ø 94mm	28mm

CURVES & FITTINGS - TUBE FITTINGS

Pivotable connector, satin finish



AISI316	FOR TUBE A	B	C
E446	Ø 42.4 x 2.0mm	22mm	53mm
E4461	Ø 42.4 x 2.5mm	22mm	53mm
E4462	Ø 48.3 x 2.0mm	25mm	59mm
E4463	Ø 48.3 x 2.5mm	25mm	59mm

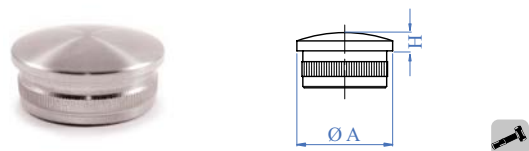
Connector, satin finish



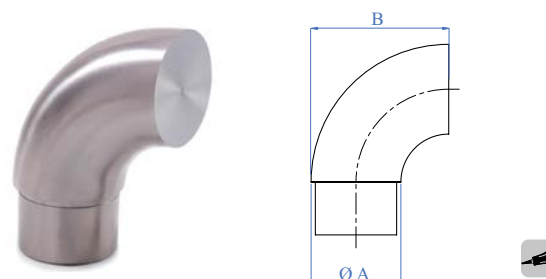
AISI304	AISI316	FOR TUBE A
E455/304	E455	Ø 42.4 x 2.0mm
-	E455/26	Ø 42.4 x 2.0mm
-	E2062	Ø 48.3 x 2.0mm
-	E2062/26	Ø 48.3 x 2.6mm

END CAPS

Hollow



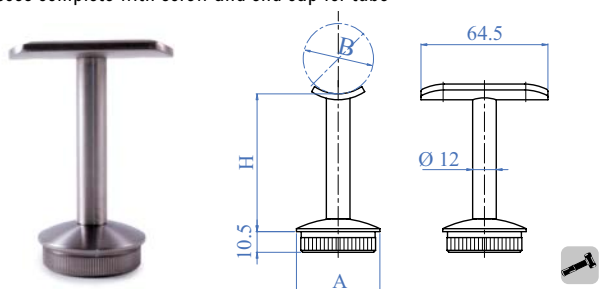
AISI316	FOR TUBE A	H
E4135/26	Ø 48.3 x 2.5mm	9mm



AISI316	FOR TUBE A	B
E45210	Ø 48.3mm	55mm

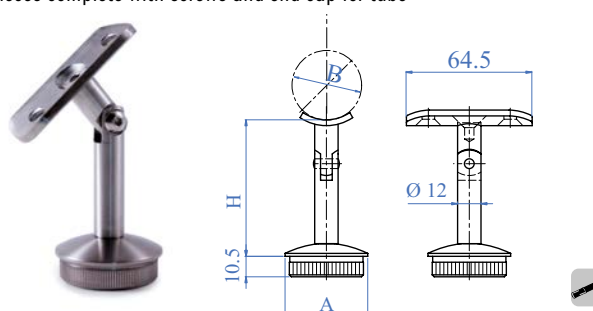
HANDRAIL SUPPORTS

3 pieces complete with screw and end cap for tube



AISI316	H	A	B
E031/S1316	75mm	Ø 42.4 x 2.0mm	Ø 42.4mm
E031/S1316/26	75mm	Ø 42.4 x 2.6mm	Ø 42.4mm
E0312316	75mm	Ø 48.3 x 2.0mm	Ø 42.4mm
E0312316/26	75mm	Ø 48.3 x 2.6mm	Ø 42.4mm

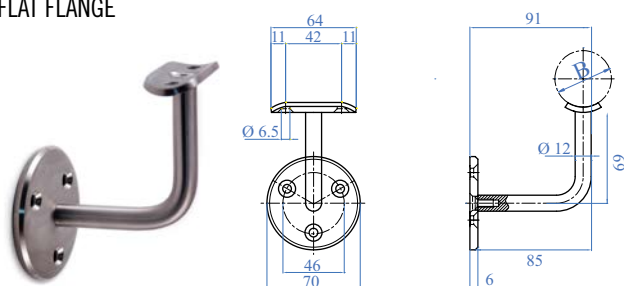
4 pieces complete with screws and end cap for tube



AISI316	H	A	B
E030/S316	75mm	Ø 42.4 x 2.0mm	Ø 42.4mm
E030/S316/26	75mm	Ø 42.4 x 2.5mm	Ø 42.4mm
E0302316	75mm	Ø 48.3 x 2.0mm	Ø 42.4mm
E0302316/26	75mm	Ø 48.3 x 2.5mm	Ø 42.4mm

HANDRAIL SUPPORTS

FLAT FLANGE



Tube adaptor with a satin finish

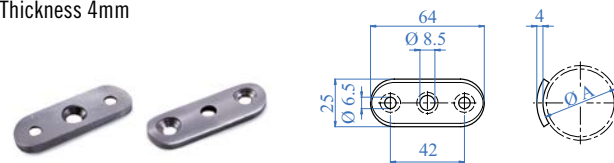
AISI304	AISI316	DESCRIPTION	B
E02230	-	With Internal Thread	Ø 42.4mm
E02232	-	With Internal Thread	Ø 48.3mm

AISI316	FOR TUBE	H
E492/26	Ø 48.3 x 2.5mm	14mm

MOUNTING PLATES



Thickness 4mm



AISI316	FOR TUBE
E011971316	Ø 42.4mm
E011973316	Ø 48.3 - Ø 60.3mm

AISI316	FOR TUBE
E011972316	Ø 48.3 - Ø 60.3mm

ACCESSORIES

Degreaser spray for cleaning all metal surfaces.



CODE NO.

E4051

Leaves a thin antistatic and water-repellent coat on treated metallic surfaces. Recommended for use on finished products



CODE NO.

E4052

High-strength adhesive



CODE NO.

E4054

NEW Products

Here's our range of NEW exciting products. These are not stock items and are only available from our manufacturing partner in Italy, with corresponding lead times. Please contact your nearest service centre for further details or visit our website www.aalco-handrail.com



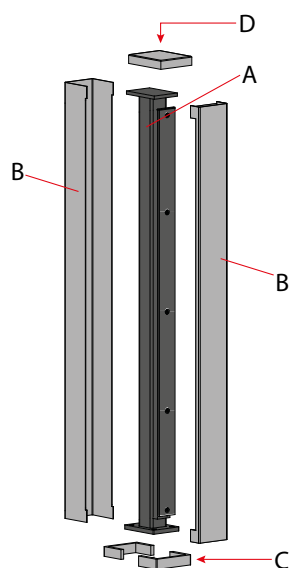
For a complete product brochure, which includes the special order items NOT commonly held in the UK, please contact your local service centre or visit our website www.aalco-handrail.com





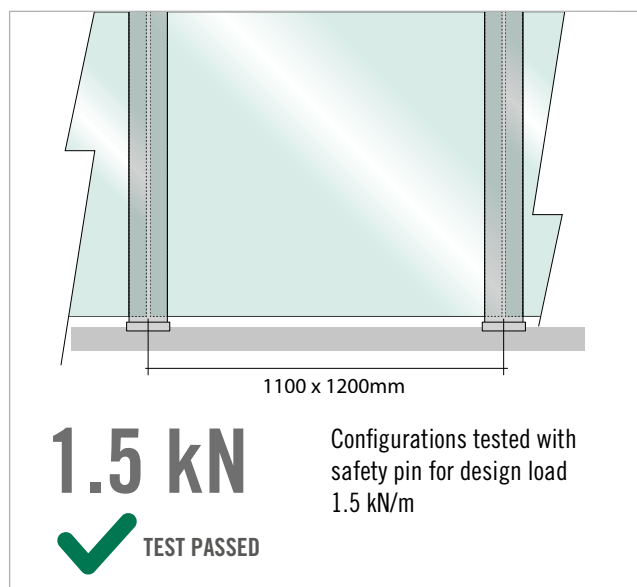
NEW

CHAMELEON GLASS SYSTEM



COMPONENTS INCLUDED IN THE KIT

- A)** 1 Galvanised mild steel structural post
- B)** 2 Customisable covers in material and finishing
- C)** 1 Lower closing cap in stainless steel mirror polished
- D)** 1 Upper closing cap in mirror polished stainless steel



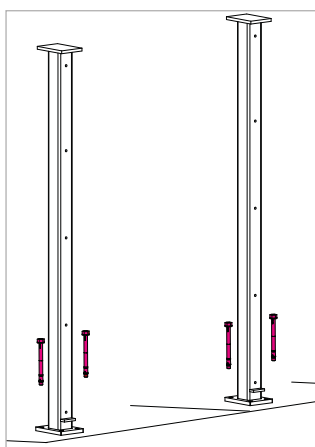
1100 x 1200mm

1.5 kN

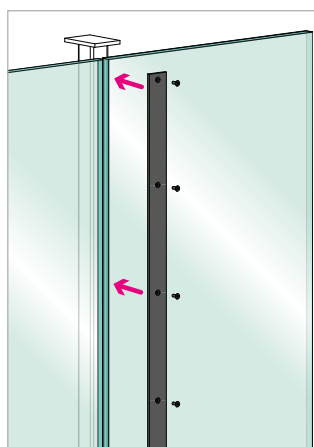


TEST PASSED

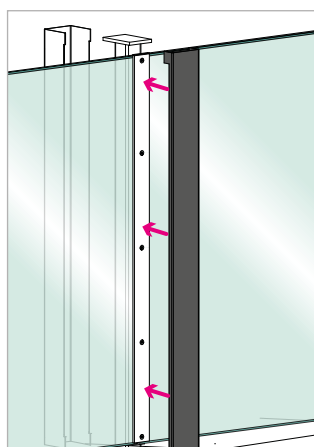
Configurations tested with safety pin for design load 1.5 kN/m



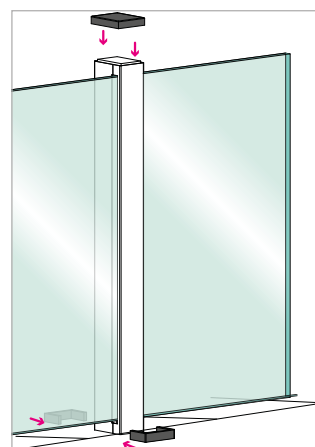
- Mount the structural load-bearing element at the desired pitch.



- Apply the glass and secure with the appropriate flat fixing brackets with gaskets.



- Apply the covers of the chosen material and finish and attach to the previously mounted structure.

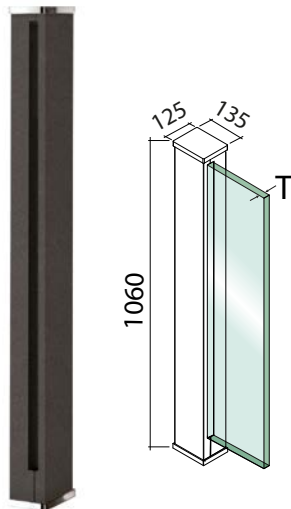


- Apply the upper and lower caps.

CHAMELEON POST

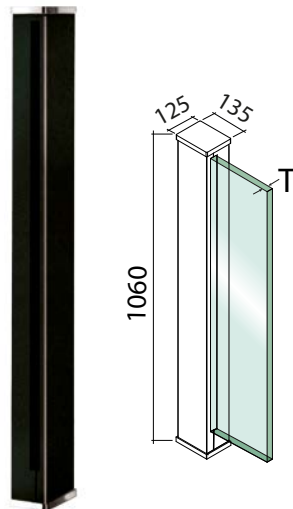
CHAMELEON POST

NEW



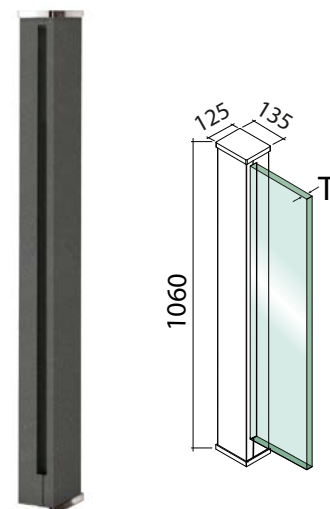
T = from 10 to 17.52mm

COVER IRON ZINC	COVER FINISH
I2000400	Raw



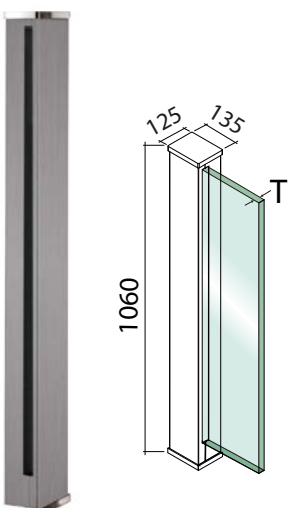
T = from 10 to 17.52mm

COVER IRON ZINC	COVER FINISH
V2000430	Matt Black RAL 9005



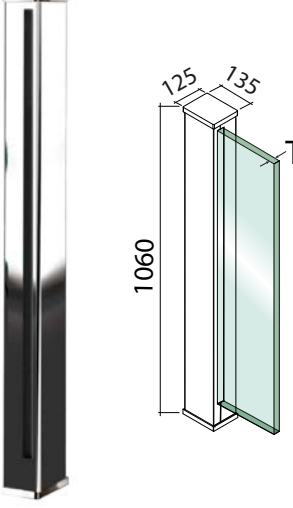
T = from 10 to 17.52mm

COVER IRON ZINC	COVER FINISH
V2000420	Iron RAL 7021



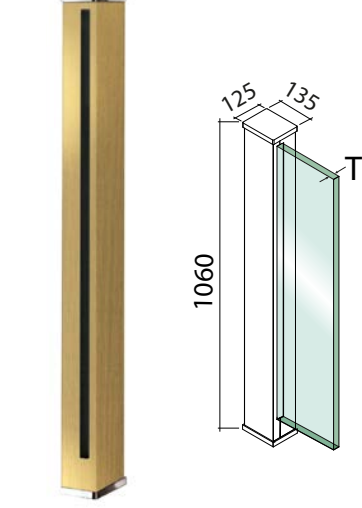
T = from 10 to 17.52mm

COVER AISI304	COVER AISI316	COVER FINISH
E2000440	E2000440316	Satin finish



T = from 10 to 17.52mm

COVER AISI316	COVER FINISH
X2000440316	Mirror polished



T = from 10 to 17.52mm

COVER BRASS	COVER FINISH
E2000410	Satin brass

The Chameleon Post kits consist of: end caps, supporting structure and cover.

If unspecified, the Chameleon Posts are supplied in the mild steel raw finish version, along with AISI 304 mirror polished accessories.



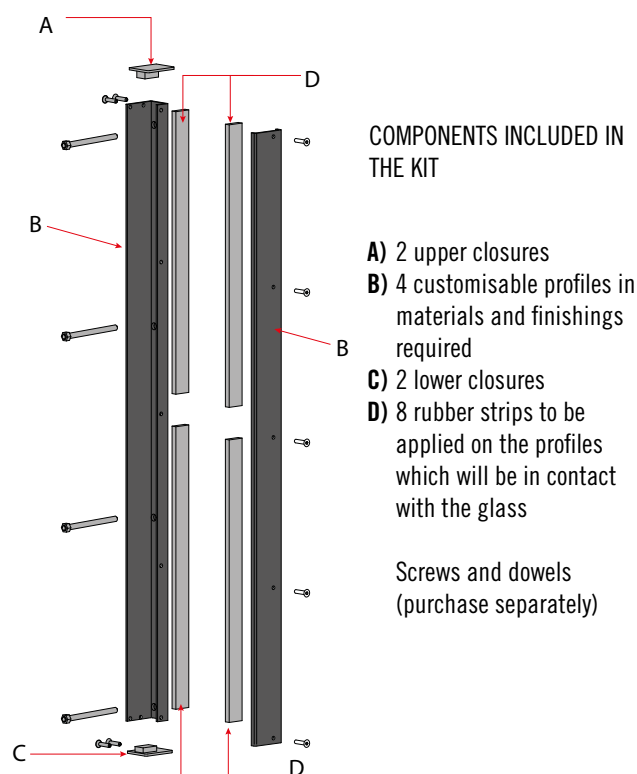
CHAMELEON POST

FRENCH BALCONY SYSTEM

CLEARVISTA

CLEAR VISTA APPLICATION 1 - MASONRY FITTING

The Clear Vista French Balcony is designed to be in harmony with the environment and the surrounding built architecture. It ensures protection for the windows, without blocking the light, impeding the view or compromising safety.



Stainless steel AISI 316

AISI316	GLASS HEIGHT	PROFILE H
E2200700	900mm	930mm
E2200710	1000mm	1030mm
E2200720	1100mm	1130mm



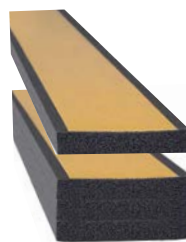
Raw steel

IRON RAW	GLASS HEIGHT	PROFILE H
F2200700	900mm	930mm
F2200710	1000mm	1030mm
F2200720	1100mm	1130mm



Matt black steel galvanised

IRON ZINC	GLASS HEIGHT	PROFILE H
V2200700	900mm	930mm
V2200710	1000mm	1030mm
V2200720	1100mm	1130mm



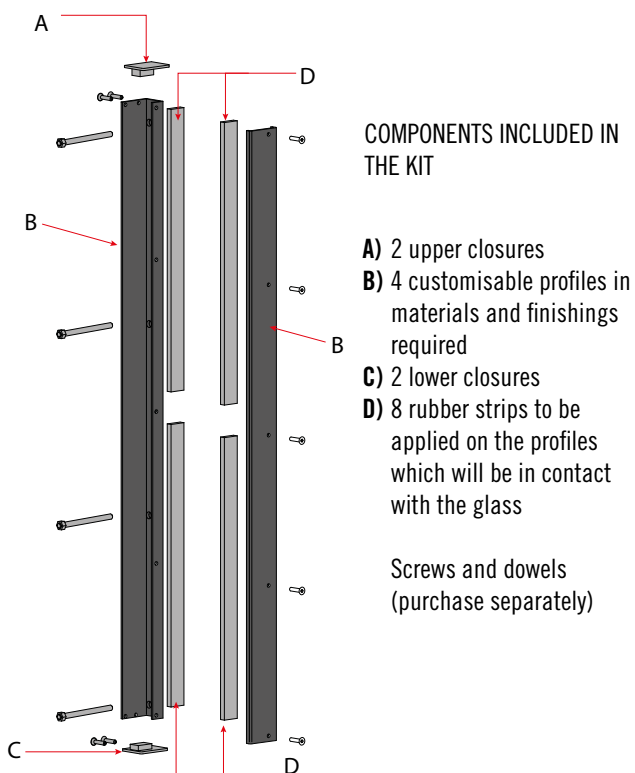
Fastening gasket kit compatible with all profiles

RUBBER	GLASS THICKNESS
E2200640	5+5+PVB
E2200650	6+6+PVB

FRENCH BALCONY SYSTEM

CLEARVISTA

CLEAR VISTA APPLICATION 2 - WINDOW FRAME FITTING



Stainless steel AISI 316

AISI316	GLASS HEIGHT	PROFILE H
E2200600	900mm	936mm
E2200610	1000mm	1036mm
E2200620	1100mm	1136mm



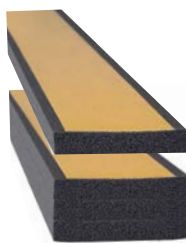
Raw steel

IRON RAW	GLASS HEIGHT	PROFILE H
F2200600	900mm	936mm
F2200610	1000mm	1036mm
F2200620	1100mm	1136mm



Matt black steel galvanised

IRON ZINC	GLASS HEIGHT	PROFILE H
V2200600	900mm	936mm
V2200610	1000mm	1036mm
V2200620	1100mm	1136mm



Fastening gasket kit compatible with all profiles

RUBBER	GLASS THICKNESS
E2200640	5+5+PVB
E2200650	6+6+PVB

CLEAR VISTA - FRENCH BALCONY

NEW

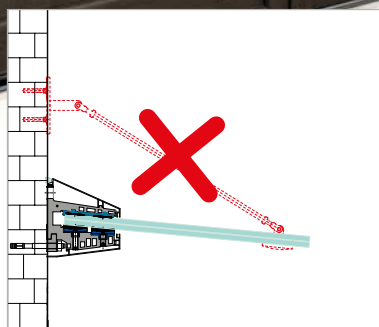
NEW

CANOPY

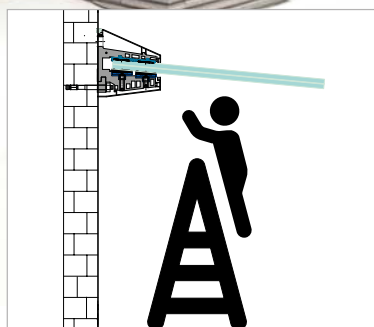
SMARTGLASS



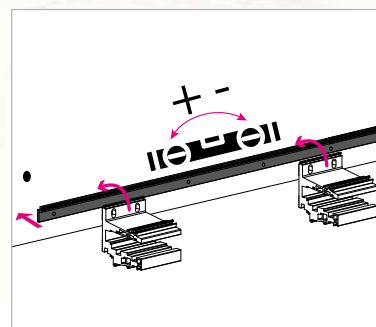
NEW to the range is the SMARTGLASS canopy designed by IAM Design. The use of flat supports and screws creates an invisible fixing in the lower part of the structure to ensure an elegant and discrete canopy.



Compared to traditional canopies, it does not feature tie rods with a design which is therefore more minimal and suitable for contemporary architecture.



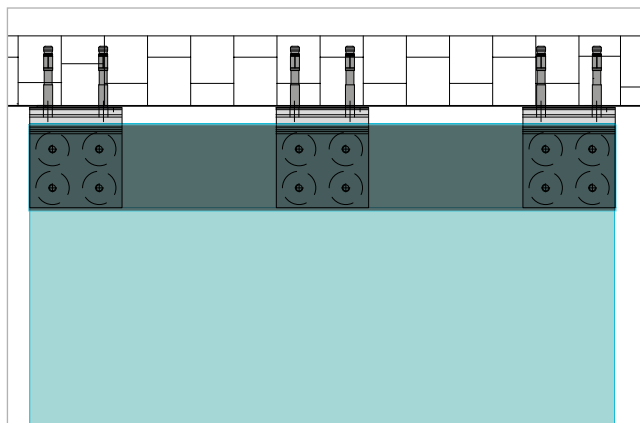
The fixing of this canopy is all done from the underside, ensuring limited use of ladders and scaffolding compared to other canopy systems currently on the market.



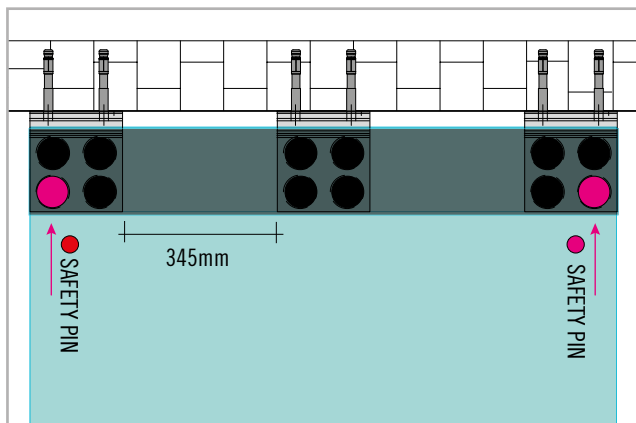
The alignment of the SMARTGLASS canopy is easy thanks to the alignment brackets that allow the system to be levelled before installing the glass support clamps.

SMARTGLASS CANOPY

SMARTGLASS CANOPY



The fixing of the glass and support clamps is done independently, which reduces the weight of the product and allows for easy handling and installation.



The number of holes in the glass is minimised with only two holes suggested for each glass panel to accommodate the safety pin.

Optional use of safety pin according to regulations in force.

SMARTGLASS is a complete kit and does not require any additional components.

COMPONENTS INCLUDED IN THE KIT

- Structural clamps
- Cover profiles for upper and lower closing
- Alignment and levelling profile
- Glass fixing components
- 2 safety pins (E95915) - 4 safety pins (E95900) - 6 safety kits (E95910)
- Closing gaskets
- 2 end caps

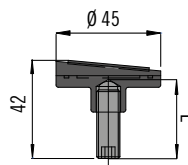
Glass not included



Custom lengths and finishing options can be made available upon request.

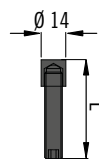
ALUMINIUM	GLASS THICKNESS	LENGTH
E95915	16.76 - 17.52 - 20.76 21.52 - 24.76 - 25.52mm	1500mm
E95900	16.76 - 17.52 - 20.76 21.52 - 24.76 - 25.52mm	2000mm
E95910	16.76 - 17.52 - 20.76 21.52 - 24.76 - 25.52mm	3000mm

LOOSE COMPONENTS



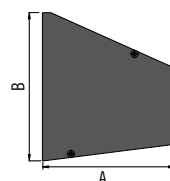
Glass fixing pad

ALUMINIUM	GLASS THICKNESS	LENGTH L
AISI304		
A	E95820	from 16.76 to 25.52mm 40mm
B	E95821	from 16.76 to 25.52mm 32mm



Safety pin

ALUMINIUM	LENGTH L
AISI304	
C	E95780 56mm



End cap

ALUMINIUM	DIMENSIONS A x B
E95750	142 x 160mm

Aalco has 18 service centres around the country which offer a reliable and on-time delivery service anywhere in the UK. Each centre holds stock to meet the immediate needs of customers in the local area and this is backed up by bulk stocks held at a central warehouse.

To find out more, ask for a quotation or to get advice on any product selection, please contact your local Aalco service centre.

ABERDEEN

Tel: 01224 854810
Fax: 01224 871982
aberdeen@aalco.co.uk

AYLESBURY

Tel: 01296 461700
Fax: 01296 339923
aylesbury@aalco.co.uk

BELFAST

Tel: 028 9083 8838
Fax: 028 9083 7837
belfast@aalco.co.uk

BIRMINGHAM

Tel: 0121 585 3600
Fax: 0121 585 6864
birmingham@aalco.co.uk

CHEPSTOW

Tel: 01291 638638
Fax: 01291 638600
chepstow@aalco.co.uk

DYFED

Tel: 01269 842044
Fax: 01269 845276
dyfed@aalco.co.uk

ESSEX

Tel: 01268 884200
Fax: 01268 884220
essex@aalco.co.uk

GLASGOW

Tel: 0141 646 3200
Fax: 0141 646 3260
glasgow@aalco.co.uk

HULL

Tel: 01482 626262
Fax: 01482 626263
hull@aalco.co.uk

LEEDS

Tel: 0113 276 3300
Fax: 0113 276 0382
leeds@aalco.co.uk

LIVERPOOL

Tel: 0151 207 3551
Fax: 0151 207 2657
liverpool@aalco.co.uk

MANCHESTER

Tel: 01204 863456
Fax: 01204 863430
manchester@aalco.co.uk

NEWCASTLE

Tel: 0191 491 1133
Fax: 0191 491 1177
newcastle@aalco.co.uk

NORWICH

Tel: 01603 787878
Fax: 01603 789999
norwich@aalco.co.uk

NOTTINGHAM

Tel: 0115 988 2600
Fax: 0115 988 2636
nottingham@aalco.co.uk

SOUTHAMPTON

Tel: 023 8087 5200
Fax: 023 8087 5275
southampton@aalco.co.uk

STOKE

Tel: 01782 375700
Fax: 01782 375701
stoke@aalco.co.uk

SWANLEY

Tel: 01322 610900
Fax: 01322 610910
swanley@aalco.co.uk



Also available in Ireland



DUBLIN

Tel: +353 (0) 1 629 8600
Fax: +353 (0) 1 629 9200
dublin@amari-dublin.com

CORK

Tel: +353 (0) 21 431 0520
Fax: +353 (0) 21 431 0519
cork@amari-cork.com