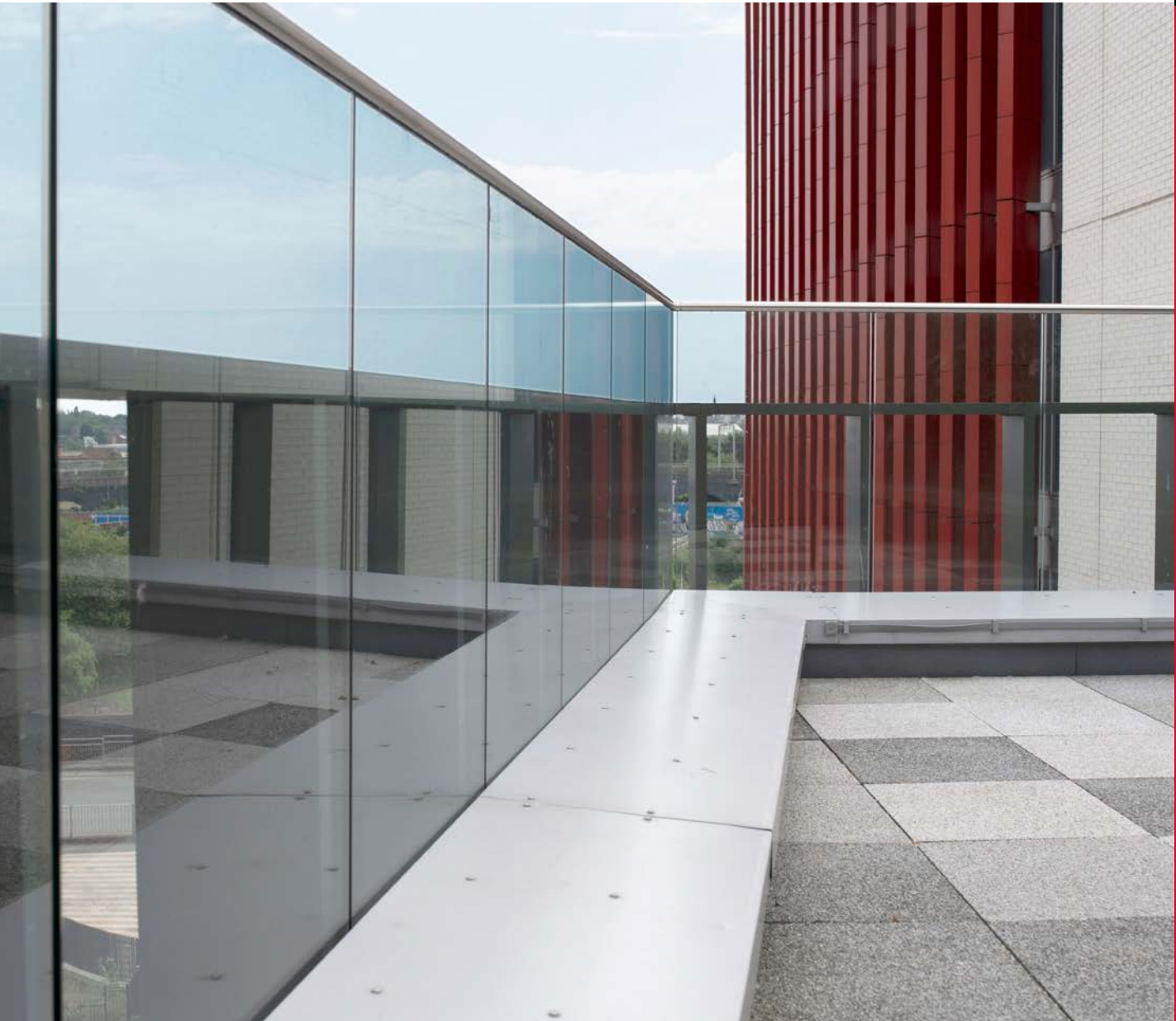


aalco® ARCHITECTURAL HANDRAIL SYSTEMS

NEW



glassu® GLASS U P2 (PRECISION 2)
HANDRAIL SYSTEM

CONTENTS

GLASS U P2 (PRECISION 2) HANDRAIL SYSTEM	1
TOP - FLOOR ANCHORAGE	2-3
SIDE - WALL ANCHORAGE	4-7
ACCESSORIES FOR LATERAL ANCHORAGE	8-9
LED ACCESSORIES	10-11
INSTALLATION - FLOOR ANCHORAGE	12
INSTALLATION - WALL ANCHORAGE	13



RUBBER MALLET TO BE USED



PRODUCT TO BE GLUED WITH E4054



ASSEMBLY WITH ALLEN KEY



PRODUCT TO BE WELDED



ANTI-CLIMB PRODUCT



SUPER STRONG, HIGH RESISTANT PRODUCT



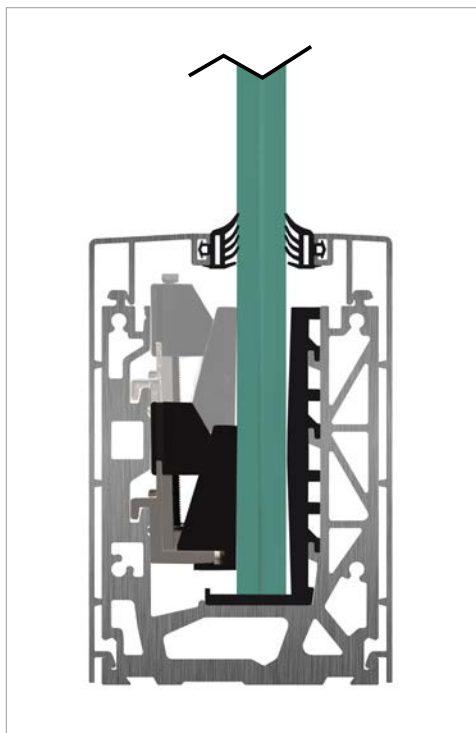


NEW

Glass U is a modular system for creating glass railings (without struts) for stairs and balconies, with floor or wall anchoring; it is suitable both for interiors and exteriors, for private and public places including areas of high traffic. Every Glass U product is made to meet highly exacting technical requirements, creating a fixing system that supports the installation with a selection of stands and complementary covers which are ready to be assembled. With just a few actions, the fastening procedure ensures precise fitting and reduced installation time. The system guarantees complete security in fastening the sheet to the profile.

GLASS U P2 HANDRAIL SYSTEM

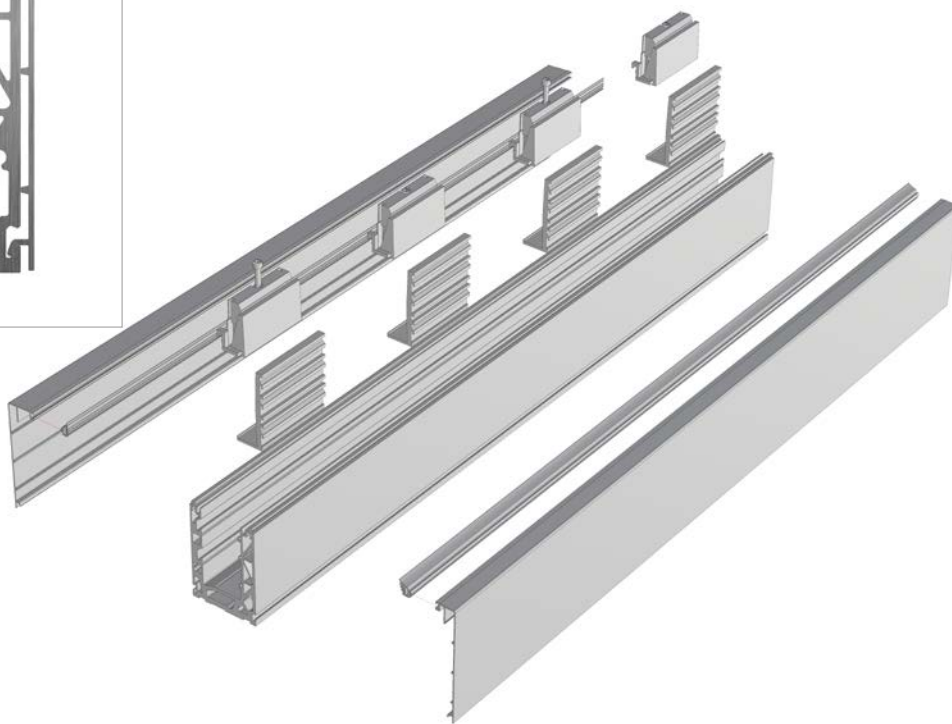
GLASS U P2 (PRECISION 2) TOP








This new generation of profiles has been designed to enable easier alignment of glass in balustrades. It allows adjustment of the glass from just the internal side of the balustrade through the patented ACE-BLOCK system. The Glass U P2 system has successfully passed the most stringent tests and offers aesthetic lines that have made the system such a popular option.

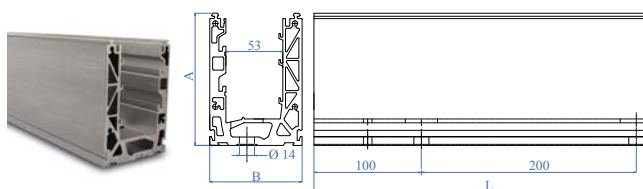
The system's interior represents the true innovation with the new ACE-BLOCK regulation system. The mechanical and functional characteristics allow easier installation while increasing performance resistance.

Caution: use glass only as indicated under current regulations. For more information contact your local Service Centre.



DESCRIPTION OF KIT ELEMENTS

PROFILE	COVER	COVER	LOCKING KIT	GASKET
				



Pre-drilled profile for floor anchorage with channels for water drainage

ALUMINIUM	A	B	L
E1700803	123mm	86mm	3000mm
E1700800	123mm	86mm	6000mm



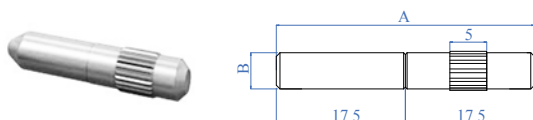
External side cover plate for floor anchorage

ALUMINIUM	A	B	L
E1700833	24mm	140mm	3000mm
E1700830	24mm	140mm	6000mm



Glass fixing kit - use 1 kit (4 blocks) for each metre of profile. For higher loadings (1.5kN) - use kit containing 6 blocks per metre.

IRON-ZINC PLASTIC	GLASS THICKNESS	Kit ⊕
E1700810/15	15-16.76-17.52mm (0.74kN loading)	for 1m
E1700810/19	19-20.76-21.52mm (0.74kN loading)	for 1m
E1700810/19/6	19-20.76-21.52mm (1.5kN loading)	for 1m
E1700810/15/KT30	15-16.76-17.52mm	for 30m
E1700810/19/KT30	19-20.76-21.52mm	for 30m



Connection plug for profiles

ALUMINIUM	A	B	Kit ⊕
E1700840	35mm	Ø 5mm	10 pc.
E1700840/KT100	35mm	Ø 5mm	100 pc.



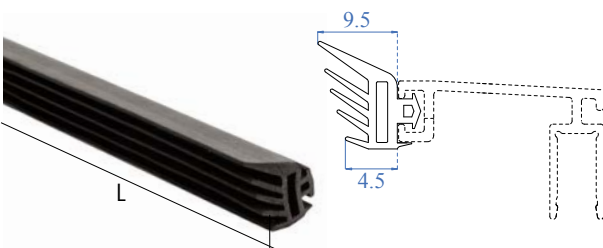
End cap for floor anchorage - 2 pieces

ALUMINIUM	A	B
E1700805	94mm	140mm



Internal side cover plate for floor anchorage

ALUMINIUM	A	B	L
E1700823	37.5mm	140mm	3000mm
E1700820	37.5mm	140mm	6000mm



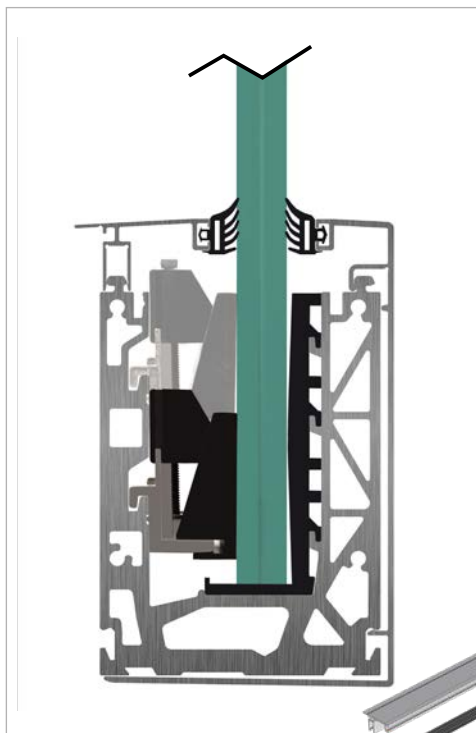
Gaskets kit for outdoor and indoor use

RUBBER	GLASS THICKNESS	L
E1999025	from 15 to 17.52mm	3m
E1999026	from 19 to 21.52mm	3m
E1999025/KT30	from 15 to 17.52mm	30m
E1999026/KT30	from 19 to 21.52mm	30m



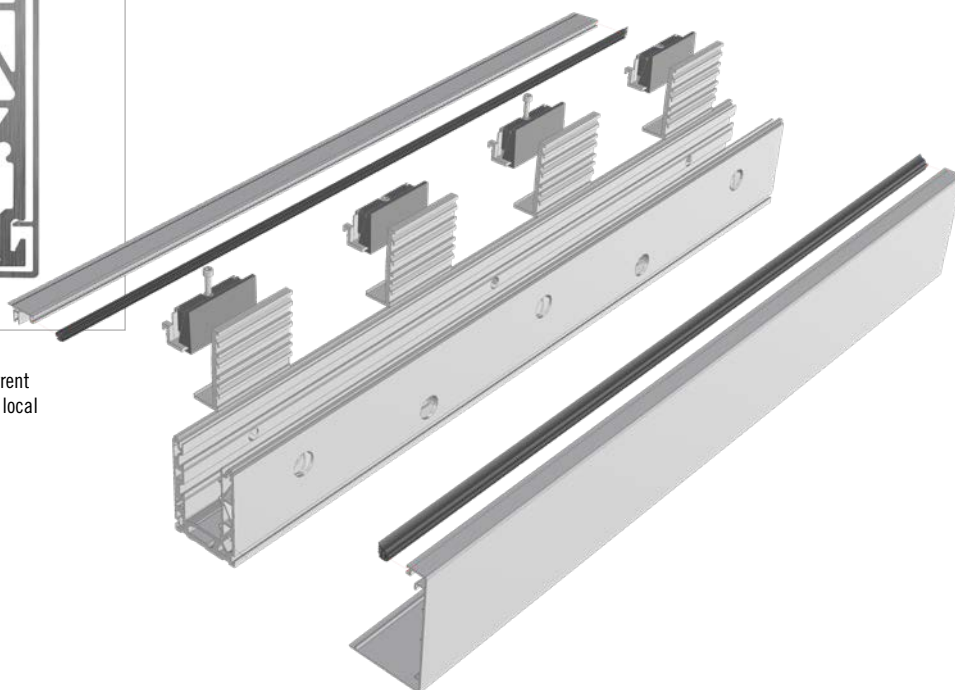
ALUMINIUM	A	B	Kit ⊕
E1700845	50mm	80mm	for 3m
E1700845/KT30	50mm	80mm	for 30m

GLASS U P2 (PRECISION 2) SIDE








This new generation of profiles has been designed to enable easier alignment of glass in balustrades. It allows adjustment of the glass from just the internal side of the balustrade through the patented ACE-BLOCK system. The Glass U P2 system has successfully passed the most stringent tests and offers aesthetic lines that have made the system such a popular option.

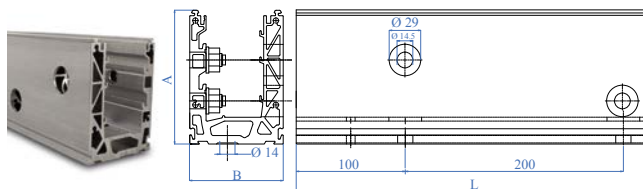
The system's interior represents the true innovation with the new ACE-BLOCK regulation system. The mechanical and functional characteristics allow easier installation while increasing performance resistance.



Caution: use glass only as indicated under current regulations. For more information contact your local Service Centre.

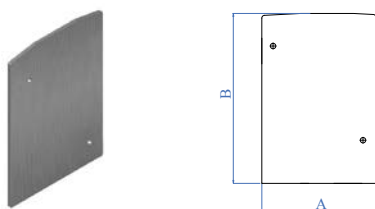
DESCRIPTION OF KIT ELEMENTS

PROFILE	COVER	COVER	LOCKING KIT	GASKET
				



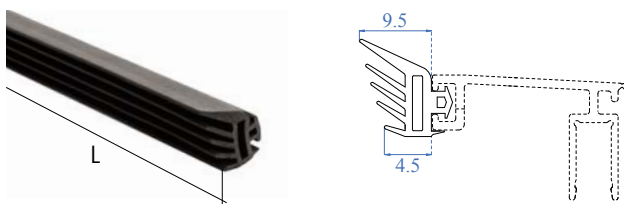
Pre-drilled profile for wall anchorage with channels for water drainage

ALUMINIUM	A	B	L
E1700853	123mm	86mm	3000mm
E1700850	123mm	86mm	6000mm



End cap for wall anchorage - 2 pieces

ALUMINIUM	A	B
E1700855	94mm	140mm



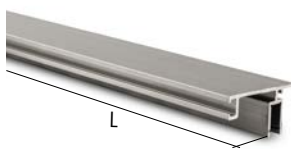
Gaskets kit for outdoor and indoor use

RUBBER	GLASS THICKNESS	L
E1999025	from 15 to 17.52mm	3000mm
E1999026	from 19 to 21.52mm	3000mm
E1999025/KT30	from 15 to 17.52mm	3000mm
E1999026/KT30	from 19 to 21.52mm	3000mm



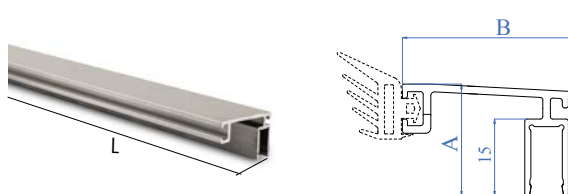
External side cover plate for wall anchorage

ALUMINIUM	A	B	L
E1700863	89mm	144mm	3000mm
E1700860	89mm	144mm	6000mm



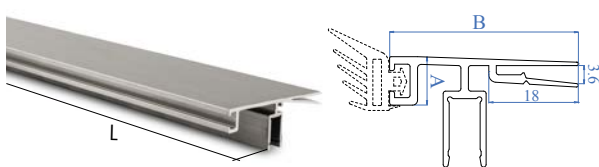
Internal side cover plate for wall anchorage

ALUMINIUM	A	B	L
E1700873	22mm	41.4mm	3000mm
E1700870	22mm	41.4mm	6000mm



External superior side cover plate for wall anchorage

ALUMINIUM	A	B	L
E1700874	22mm	29.6mm	3000mm
E1700871	22mm	29.6mm	6000mm



External superior side cover plate for wall anchorage

ALUMINIUM	A	B	L
E1700893	9.7mm	37.80mm	3000mm
E1700890	9.7mm	37.80mm	6000mm

NEW

GLASS U P2 (PRECISION 2) SIDE

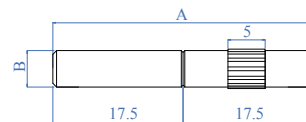


Glass fixing kit - use 1 kit (4 blocks) for each metre of profile. For higher loadings (1.5kN) - use kit containing 6 blocks per metre.

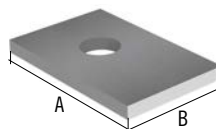
IRON-ZINC PLASTIC	GLASS THICKNESS	Kit
E1700810/15	15-16.76-17.52mm (0.74kN loading)	for 1m
E1700810/19	19-20.76-21.52mm (0.74kN loading)	for 1m
E1700810/19/6	19-20.76-21.52mm (1.5kN loading)	for 1m
E1700810/15/KT30	15-16.76-17.52mm	for 30m
E1700810/19/KT30	19-20.76-21.52mm	for 30m



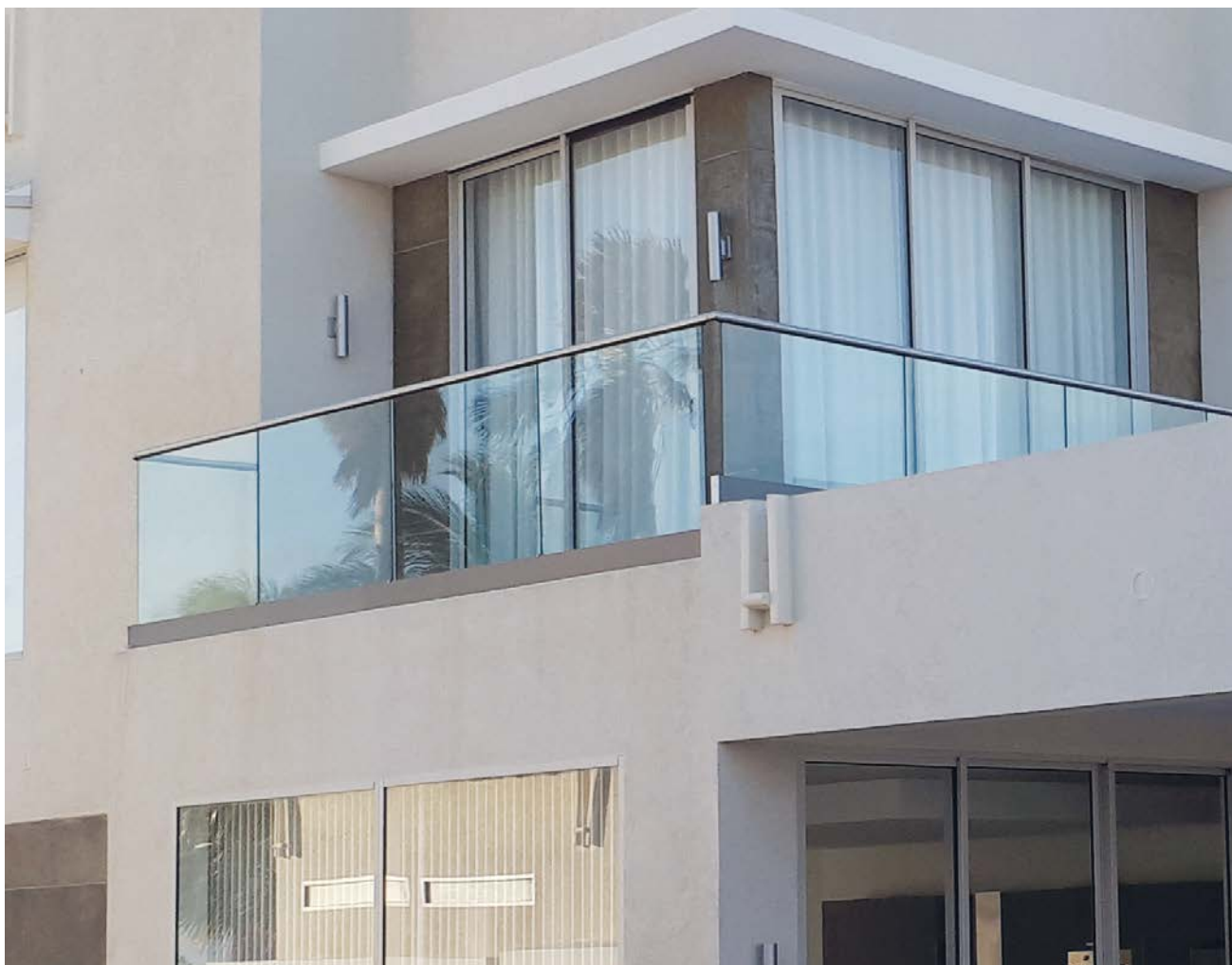
Connection plug for profiles



ALUMINIUM	A	B	Kit
E1700840	35mm	Ø 5mm	10 pc.
E1700840/KT100	35mm	Ø 5mm	100 pc.



ALUMINIUM	A	B	Kit
E1700845	50mm	80mm	for 3m
E1700845/KT30	50mm	80mm	for 30m



NEW STRONGER TIE ROD

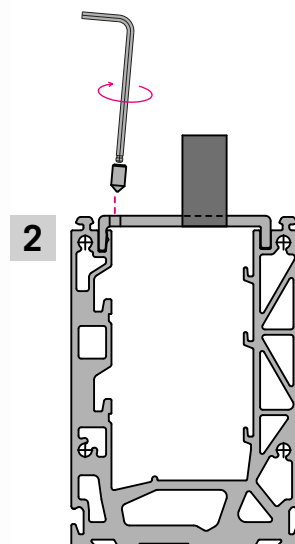
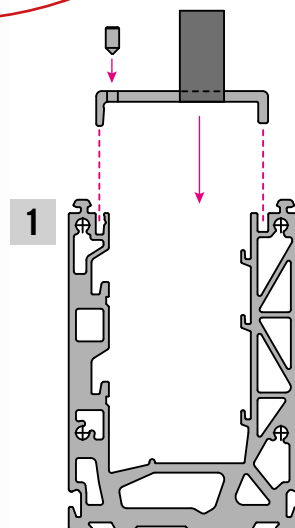
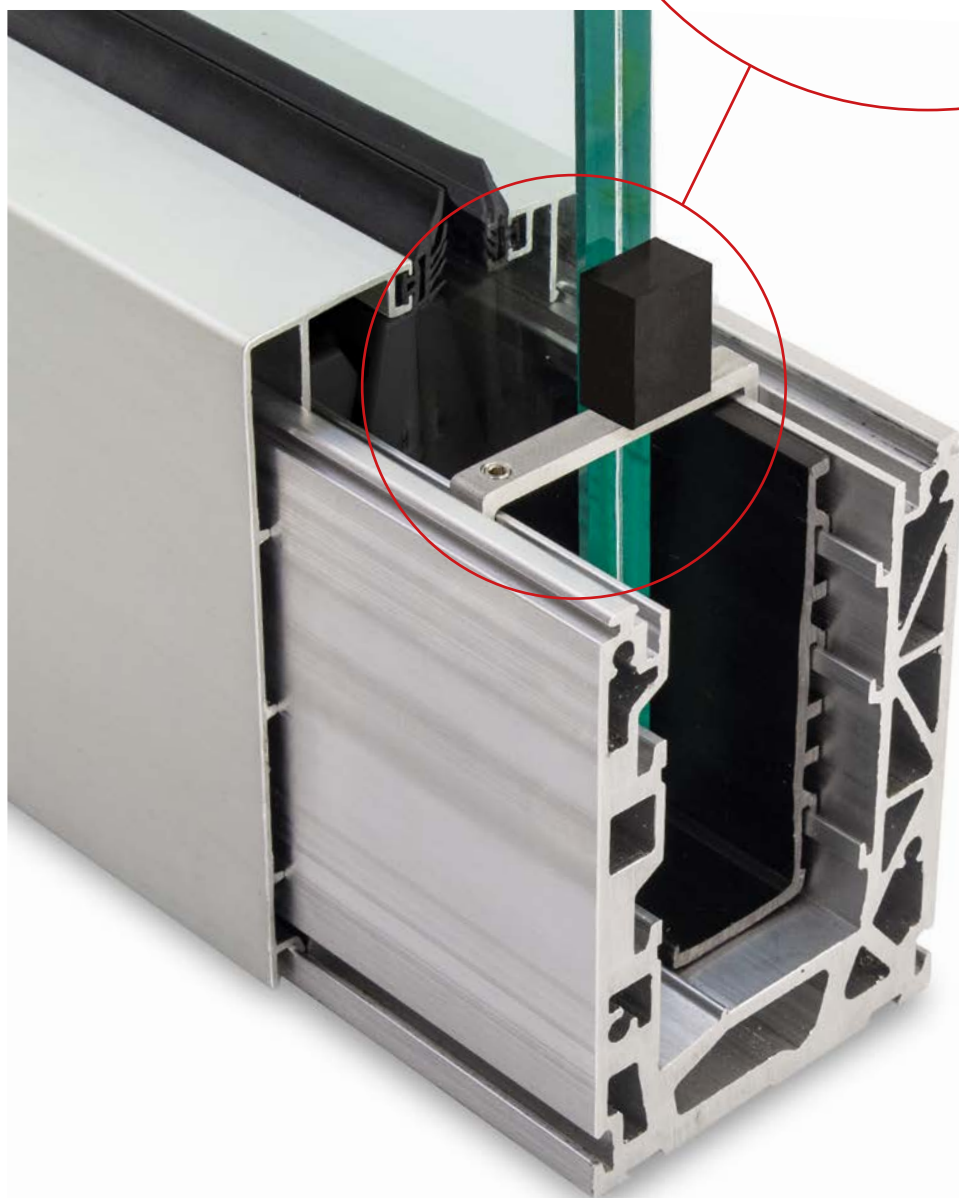
The use of the stronger tie rod is recommended, especially with glass thicknesses greater than 8+8, where the glass thickness is important. It significantly reduces the flex of glass by some 20-25%. It is also ideal in applications where the glass is more than 1200mm high.

Locking system
with Allen key

Glass spacer and
shock absorber

Structure in AISI 316
stainless steel

Code No. E1700895

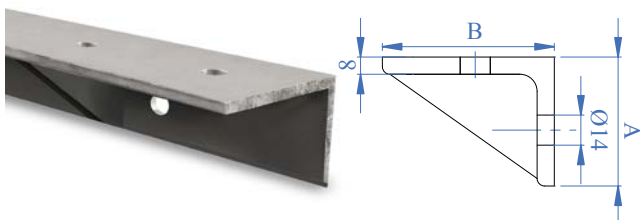


GLASS U P2 (PRECISION 2) SIDE

GLASS U P2 - ACCESSORIES FOR LATERAL ANCHORAGE

ACCESSORIES FOR LOWERED LATERAL ANCHORAGE

Sometimes, for technical construction site needs, it is necessary to anchor the railing lower than the profile axis. In these circumstances it is possible to use the lateral anchorage brackets and the relevant cover plate.



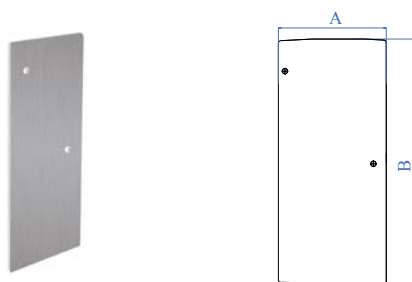
Bracket for wall profile support

IRON - ZINC	A	B	L
E1700875	60mm	80mm	3000mm



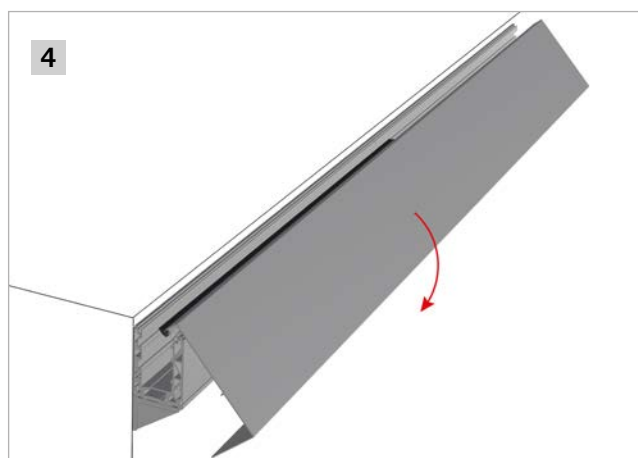
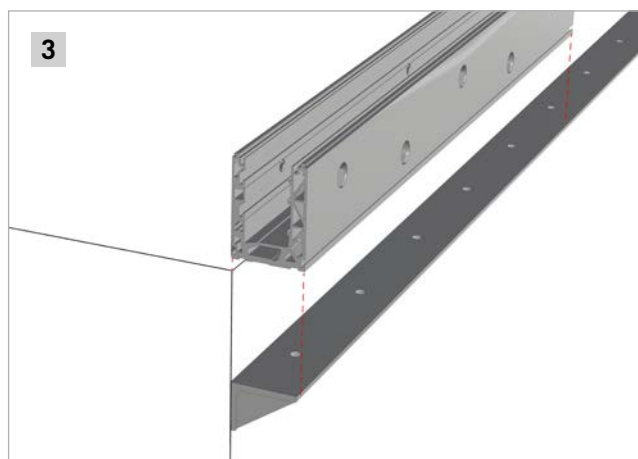
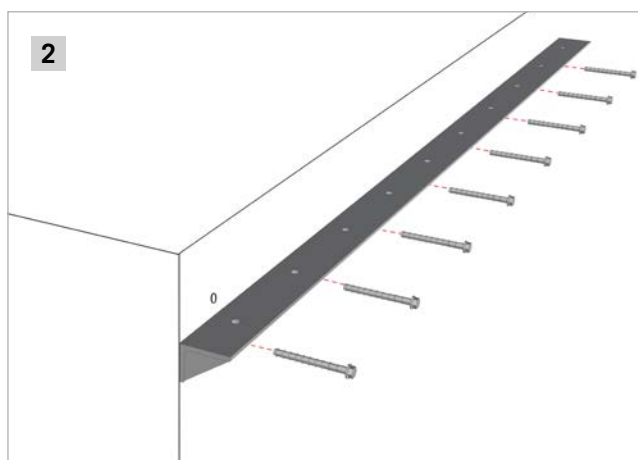
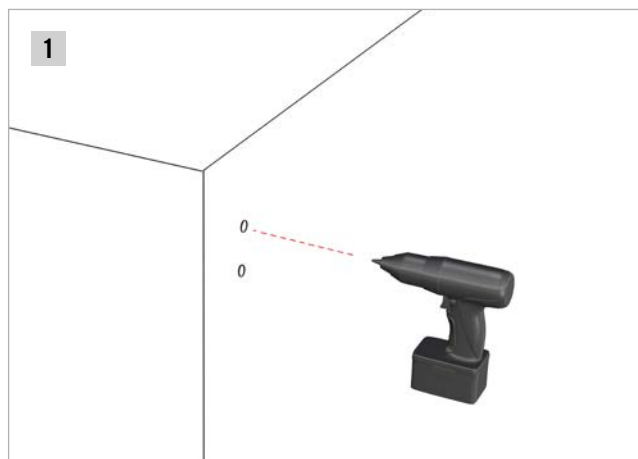
External side cover plate for wall profile with bracket

ALUMINIUM	A	B	L
E1700883	87mm	205mm	3000mm
E1700880	87mm"	205mm	6000mm

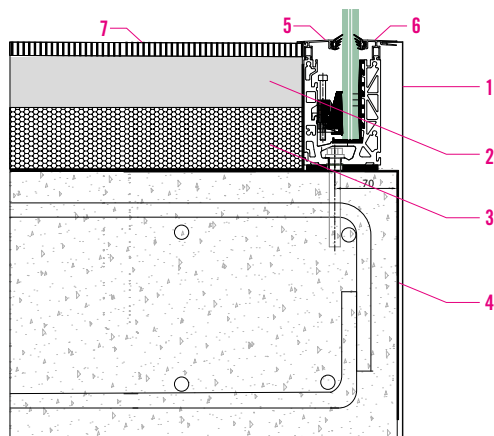


Closing cap for wall profile with bracket

ALUMINIUM	A	B	L
E1700885	90.4mm	205mm	3000mm

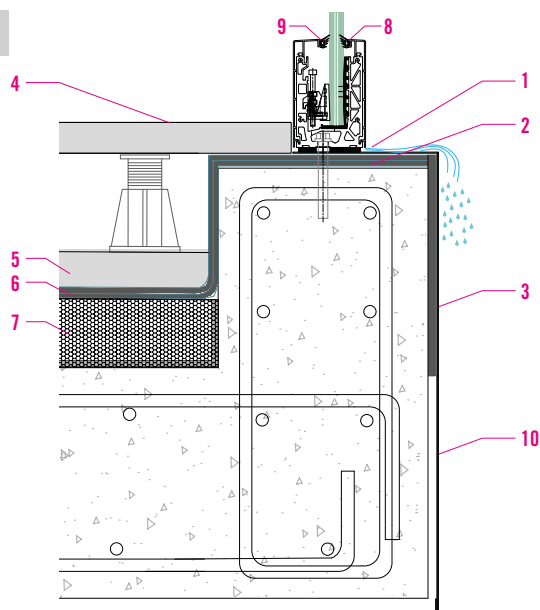


1



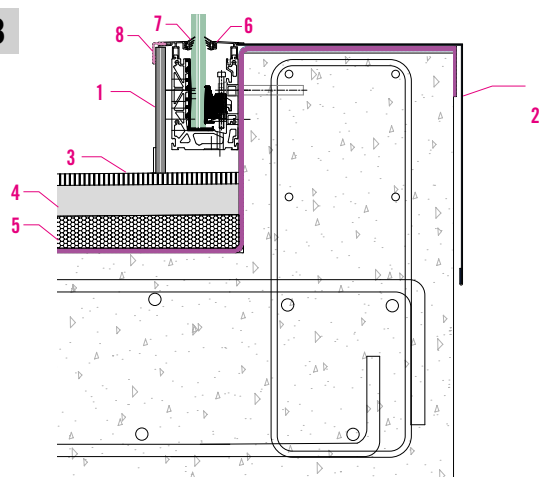
- 1 Cover plate in metal press-bended thickness 0.5mm
- 2 Slope screed
- 3 Isolation layer
- 4 Isolation layer
- 5 Internal plate E1700874
- 6 External plate E1700893
- 7 Floor

2



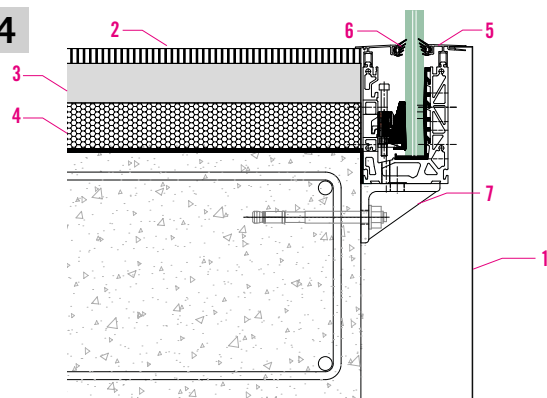
- 1 Water drain
- 2 Closure of possible infiltrations thanks to epoxy resin or liquid membrane
- 3 Flashings
- 4 Floating floor
- 5 Isolation layer
- 6 Impermeable membrane
- 7 Slope screed
- 8 External side cover plate for floor anchorage E1700833
- 9 External side cover plate for floor anchorage E1700823
- 10 Sheet metal flashing or other

3



- 1 External panel like aquapanel
- 2 Sheet metal flashing or other
- 3 Floor
- 4 Screed
- 5 Isolation layer
- 6 Internal side cover plate for wall anchorage E1700873
- 7 External superior side cover plate for wall anchorage E1700833
- 8 Folding sheet

4



- 1 Sheet metal flashing or other
- 2 Floor
- 3 Screed
- 4 Isolation layer
- 5 External plate E1700893
- 6 Internal plate E1700874
- 7 Bracket for wall profile support E1700875

GLASS U P2 - LED ACCESSORIES



DESCRIPTION	
ELED0002	To connect the LED strip to the feeder
DESCRIPTION	
ELED0003	To join two LED strips in a line
DESCRIPTION	
ELED0004	To join two LED strips by a 15mm flexible cable
DESCRIPTION	
ELED0009	To join two LED strips with a 90° elbow
DESCRIPTION	
ELED0005	To be used on every installation. Protects the unconnected end of the strip

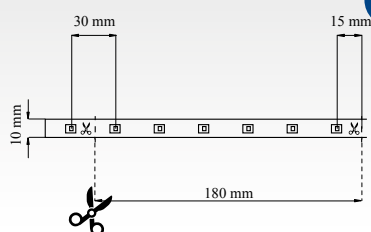
Feeders

	DESCRIPTION	INPUT	OUTPUT	POWER
ELED0100	190 x 52 x 37mm	100-240VAC 2.2 A 50/60 Hz	+24 V 4.2 A	100 W < 27m
ELED0110	162.5 x 42.5 x 32mm	100-240VAC 1.2 A 50/60 Hz	+24 V 2.5 A	60 W < 16m
ELED0120	148 x 40 x 30mm	100-240VAC 1.1 A 50/60 Hz	+24 V 1.5 A	35 W < 9m
ELED0130	140 x 30 x 20mm	200-240VAC 0.3 A 50/60 Hz	+24 V 0.75 A	18 W < 4m

The revolutionary LED cable: totally waterproof ultra-bright (over 180 lumens), ultra-thin, flexible easy to install and cut, virtually indestructible

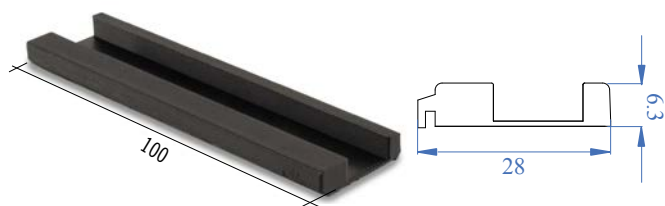


Every 18cm marks indicate where the ribbon can be cut.



LED	METRE
ELED0020	Sold by the metre. Maximum length 20m
Input voltage	24 V
Input current	154 mA
Power	3.7 W/m
Weight	60 g/m
Life time	35,000hrs
Beam angle	110°
Luminosity /m	198 lm
CRI	72
N. Led /18cm	6
Operating Temperature	-20 C° + 50 C°
Use	Indoor/outdoor

GLASS U P2 - LED ACCESSORIES



1 kit = 4 pc.

Housing for LED strip. Use 1 kit every metre of profile.

PLASTIC	A	B	Kit ⊕
E1999027	29mm	13mm	for 1m
E1999027/KT30	29mm	13mm	for 30m



Detail of housing of LED strip.



Insert housing for LED strip inside the channel located on the component with 'L' shape, on which the glass, is placed.



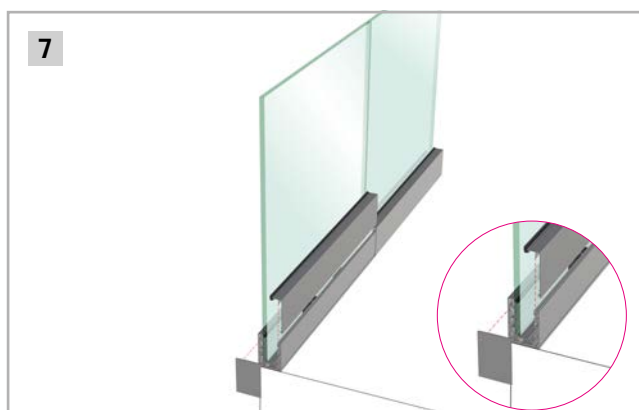
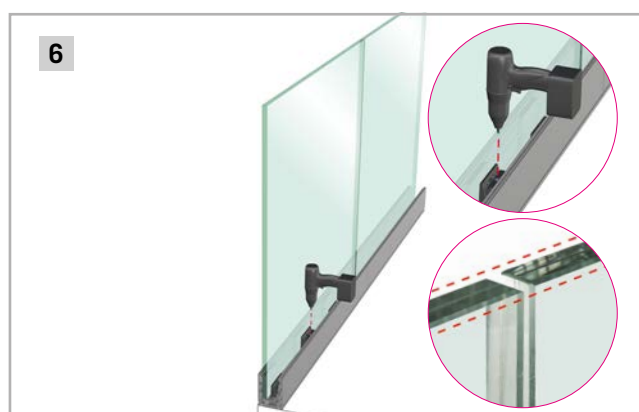
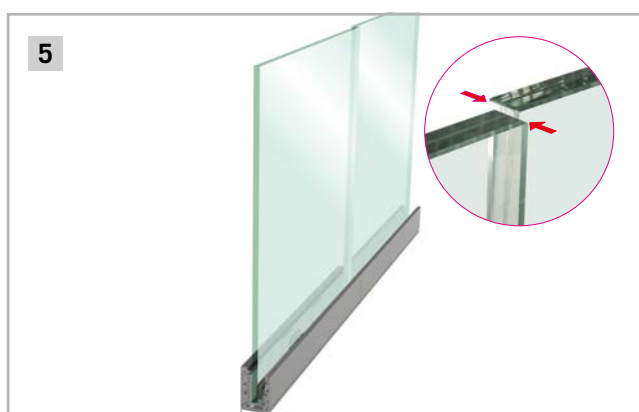
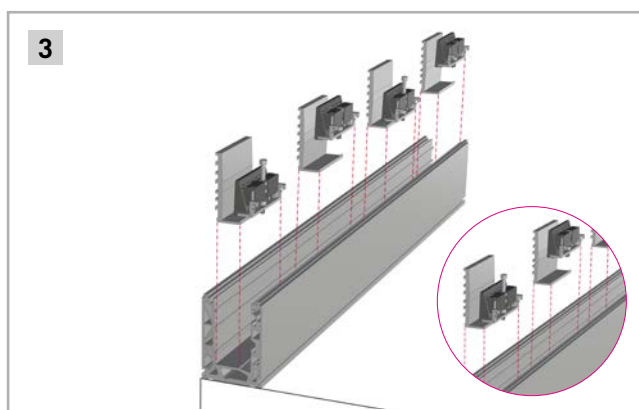
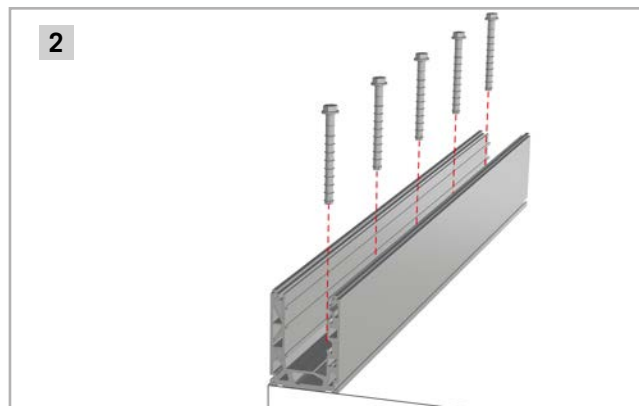
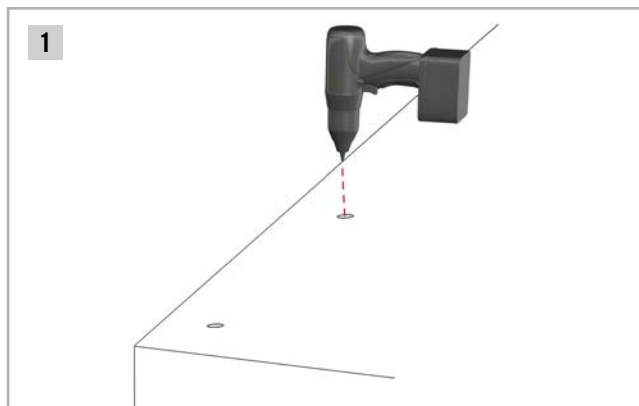
Insert the strip into the appropriate created space and place the glass directly on it.



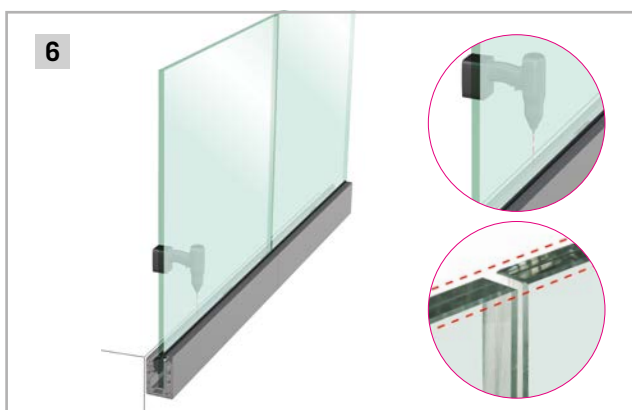
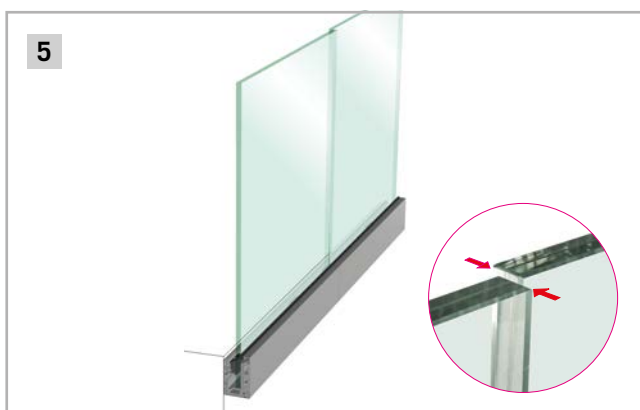
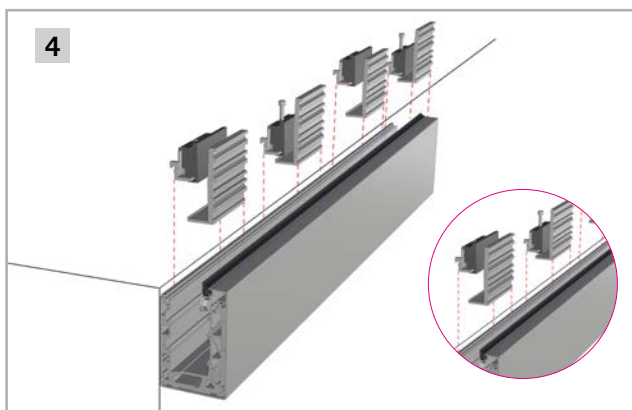
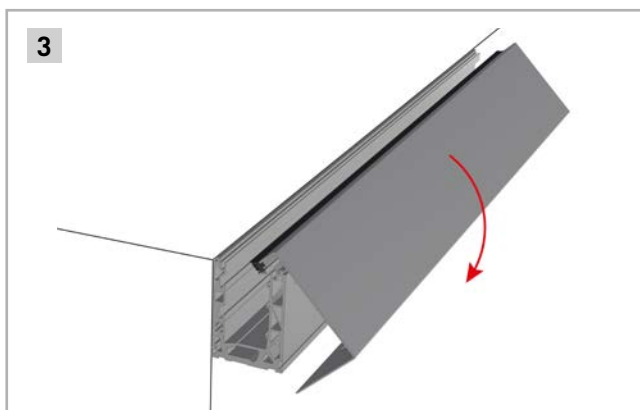
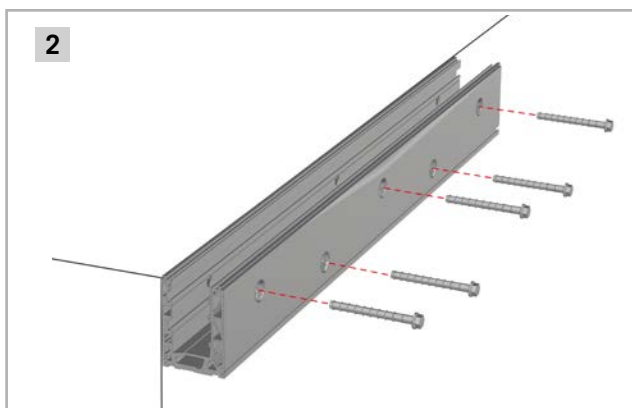
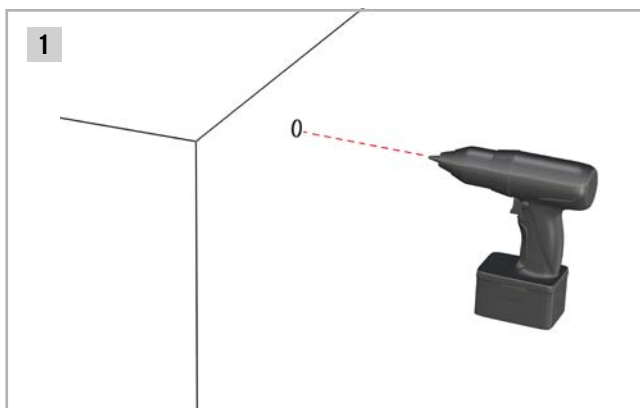
NEW

GLASS U P2 - LED ACCESSORIES

FLOOR ANCHORING INSTALLATION GLASS U P2 (PRECISION 2) TOP



WALL ANCHORING INSTALLATION GLASS U P2 (PRECISION 2) SIDE



Aalco has 18 service centres around the country which offer a reliable and on-time delivery service anywhere in the UK. Each centre holds stock to meet the immediate needs of customers in the local area and this is backed up by bulk stocks held at a central warehouse.

To find out more, ask for a quotation or to get advice on any product selection, please contact your local Aalco service centre.

ABERDEEN

Tel: 01224 854810
Fax: 01224 871982
aberdeen@aalco.co.uk

AYLESBURY

Tel: 01296 461700
Fax: 01296 339923
aylesbury@aalco.co.uk

BELFAST

Tel: 028 9083 8838
Fax: 028 9083 7837
belfast@aalco.co.uk

BIRMINGHAM

Tel: 0121 585 3600
Fax: 0121 585 6864
birmingham@aalco.co.uk

CHEPSTOW

Tel: 01291 638638
Fax: 01291 638600
chepstow@aalco.co.uk

DYFED

Tel: 01269 842044
Fax: 01269 845276
dyfed@aalco.co.uk

ESSEX

Tel: 01268 884200
Fax: 01268 884220
essex@aalco.co.uk

GLASGOW

Tel: 0141 646 3200
Fax: 0141 646 3260
glasgow@aalco.co.uk

HULL

Tel: 01482 626262
Fax: 01482 626263
hull@aalco.co.uk

LEEDS

Tel: 0113 276 3300
Fax: 0113 276 0382
leeds@aalco.co.uk

LIVERPOOL

Tel: 0151 207 3551
Fax: 0151 207 2657
liverpool@aalco.co.uk

MANCHESTER

Tel: 01204 863456
Fax: 01204 863430
manchester@aalco.co.uk

NEWCASTLE

Tel: 0191 491 1133
Fax: 0191 491 1177
newcastle@aalco.co.uk

NORWICH

Tel: 01603 787878
Fax: 01603 789999
norwich@aalco.co.uk

NOTTINGHAM

Tel: 0115 988 2600
Fax: 0115 988 2636
nottingham@aalco.co.uk

SOUTHAMPTON

Tel: 023 8087 5200
Fax: 023 8087 5275
southampton@aalco.co.uk

STOKE

Tel: 01782 375700
Fax: 01782 375701
stoke@aalco.co.uk

SWANLEY

Tel: 01322 610900
Fax: 01322 610910
swanley@aalco.co.uk



Also available in Ireland



DUBLIN

Tel: +353 (0) 1 629 8600
Fax: +353 (0) 1 629 9200
dublin@amari-dublin.com

CORK

Tel: +353 (0) 21 431 0520
Fax: +353 (0) 21 431 0519
cork@amari-cork.com